

LEGEND

- Boundary Line
- Study Boundary
- Watershed Boundary
- Wetland
- Out of Study Area
- Upland
- Wetland
- Water
- Sample Points
- Properties requiring offsite survey



Willamette River, Calapooia River, and Oak Creek Local Wetland Inventory

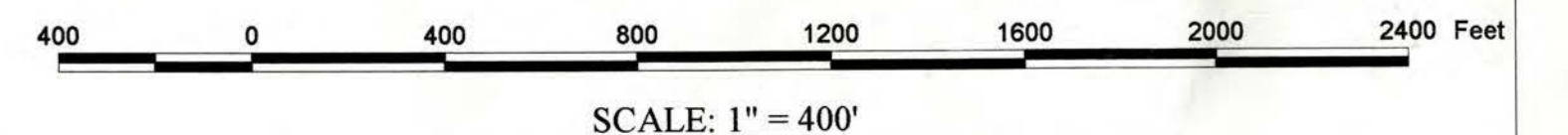
Community Development Department, City of Albany

The mapped wetland boundaries are approximate and there may be missed wetlands. Contact the Oregon Division of State Lands (503-378-3805) for information about regulations prior to site alteration in or near mapped wetlands.

Jul 28, 1999

Geographic Information Services

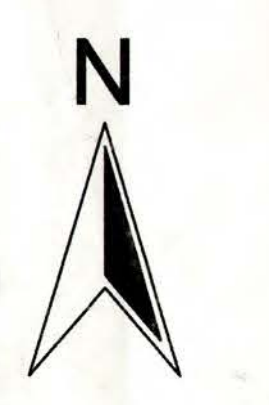
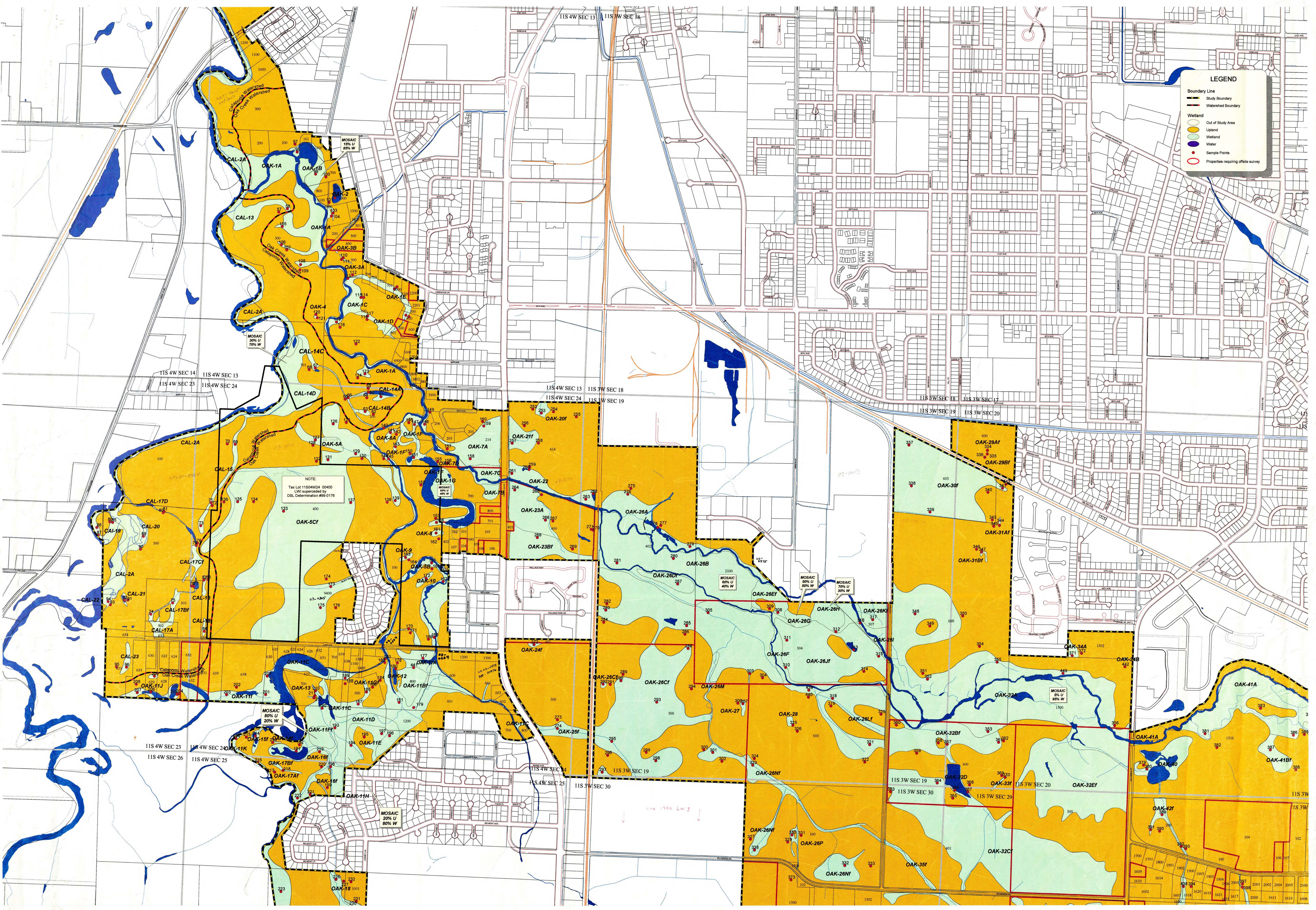
APPROVED WETLANDS INVENTORY
 Original Division of State Lands
 Meets L.O.I. Standards
 Date 11/11/99 Approved by J. Maden



The City of Albany's infrastructure records, drawings, and other documents have been gathered over many decades, using differing standards for quality control, documentation, and verification. All the information provided represents current information in a readily available format. While the information provided is generally believed to be accurate, occasionally this information proves to be incorrect, and the accuracy is not warranted. Prior to making any property purchase or other investments based in full or in part upon the information provided, it is specifically advised that you independently field verify the information contained within our records.

Sheet
1 of 3





Willamette River, Calapooia River, and Oak Creek Local Wetland Inventory

Community Development Department, City of Albany

The mapped wetland boundaries are approximate and there may be missed wetlands. Contact the Oregon Division of State Lands (503-378-3805) for information about regulations prior to site alteration in or near mapped wetlands.

Jul 28, 1999

Geographic Information Services

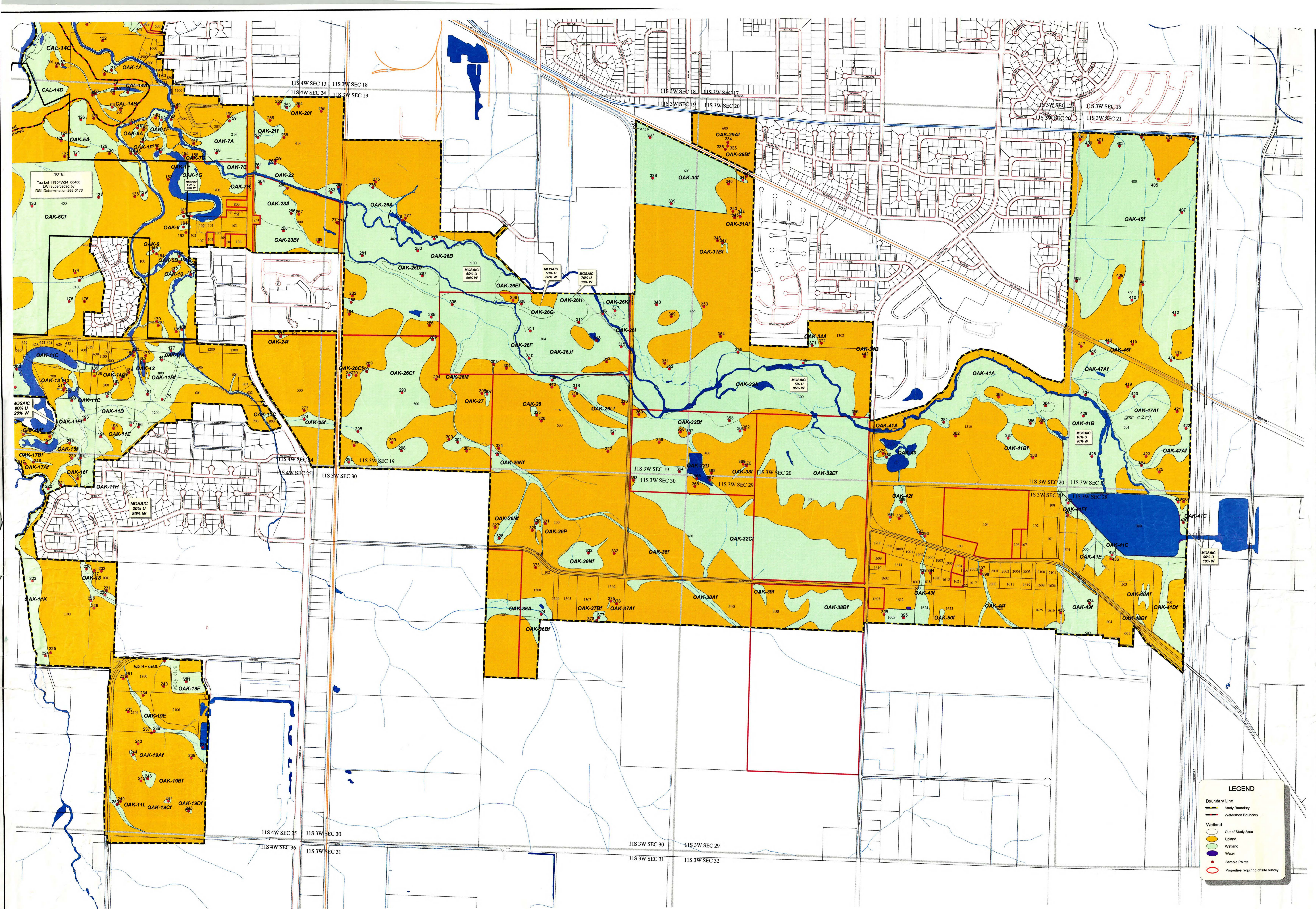
APPROVED WETLANDS INVENTORY
Oregon Division of State Lands
Map No. LW 57 standards
Date 11/99. Approved by J. Madan

400 0 400 800 1200 1600 2000 2400 Feet
SCALE: 1" = 400'

The City of Albany's infrastructure records, drawings, and other documents have been gathered over many decades, using differing standards for quality control, documentation, and verification. All the information provided represents current information in a readily available format. While the information provided is generally believed to be accurate, occasionally this information proves to be incorrect, and thus its accuracy is not warranted. Prior to making any property purchases or other investments based in full or in part upon the information provided, it is specifically advised that you independently field verify the information contained within our records.

Sheet
2 of 3





NOTE:
Tax Lot 11804W24 00400
LW supervised by
DSL Determination #99-0176

LEGEND

- Boundary Line
 - Study Boundary
 - Watershed Boundary
- Wetland
 - Out of Study Area
 - Upland
 - Wetland
 - Water
- Sample Points
- Properties requiring offsite survey

Willamette River, Calapooia River, and Oak Creek Local Wetland Inventory

Community Development Department, City of Albany

The mapped wetland boundaries are approximate and there may be missed wetlands. Contact the Oregon Division of State Lands (503-378-3805) for information about regulations prior to site alteration in or near mapped wetlands.

Jul 28, 1999

Geographic Information Services

WETLANDS INVENTORY
Oregon Division of State Lands
Date: 7/28/99 Approved by: J. Malan

0 400 800 1200 1600 2000 2400 Feet
SCALE: 1" = 400'

The City of Albany's infrastructure records, drawings, and other documents have been gathered over many decades, using differing standards for quality control, documentation, and verification. All the information provided represents current information in a readily available format. While the information provided is generally believed to be accurate, occasionally this information proves to be incorrect, and thus its accuracy is not warranted. Prior to making any property purchases or other investments based in full or in part upon the information provided, it is specifically advised that you independently verify the information contained within our records.

Sheet
3 of 3

