

- | | |
|---------------------------|--------------------------------------------------|
| Study Area | Wetland Area |
| Railroad | Probable Wetland |
| Taxlots | Wetland Cowardin Class |
| City Limits | PEMC - Emergent, Seasonally Flooded |
| Urban Growth Boundary | PFOA - Forested, Temporarily Flooded |
| Public Land Survey System | PFOC - Forested, Seasonally Flooded |
| Waterways | PUBF - Freshwater Pond, Semi-permanently Flooded |
| Other Waters | |

**Entire study area is within the Lower Thomas Creek Subbasin (HUC 6th field)

APPROVED LOCAL WETLANDS INVENTORY
12/16/2011 PR
OREGON DEPARTMENT OF STATE LANDS

NOTE: All Wetlands identified on this map were determined to be "Locally Significant Wetlands"

0 500 1,000 2,000 Feet

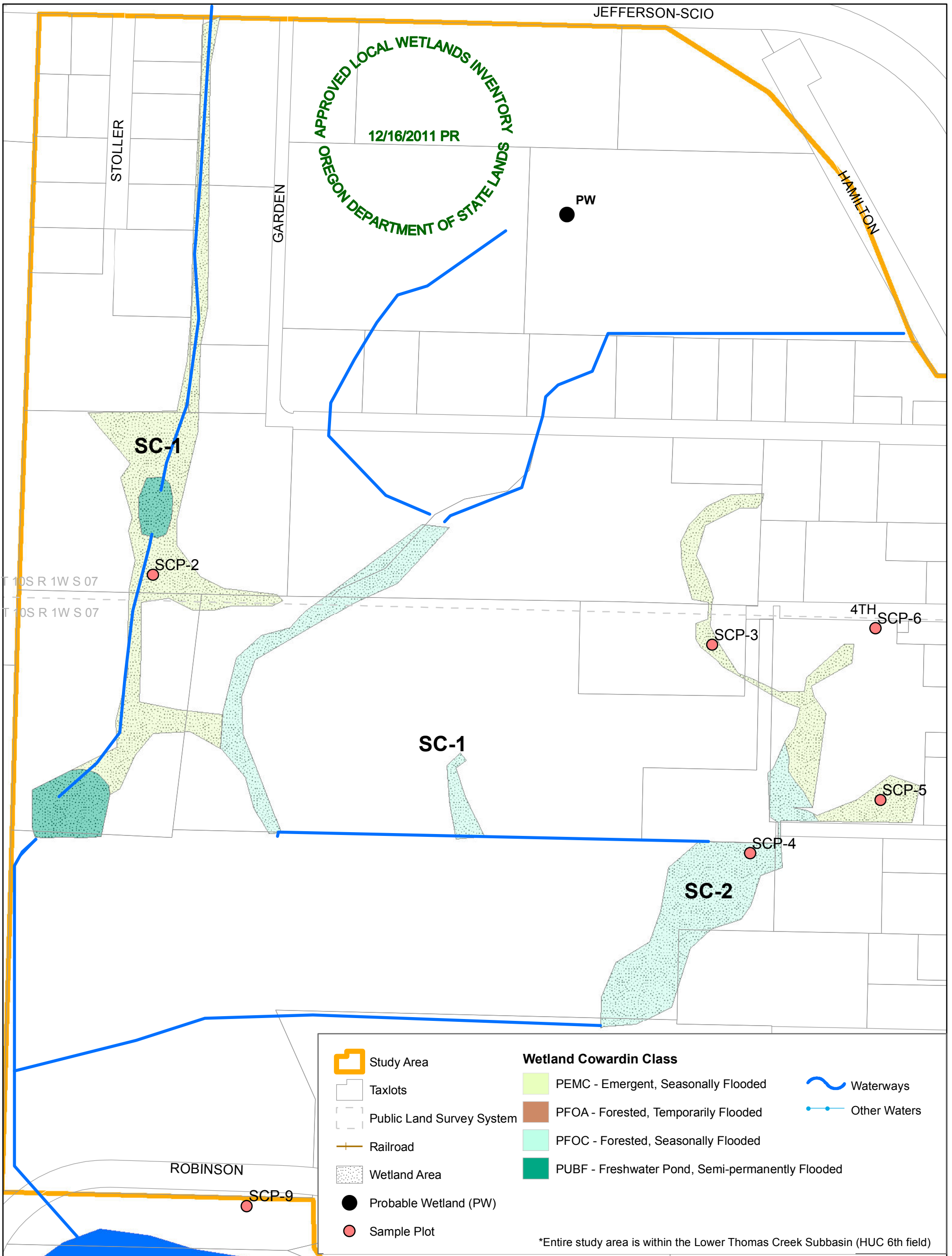
Sheet 1 -- City of Scio Local Wetlands Inventory - Index Map

Information shown on this map is for planning purposes, represents the conditions that exist at the map date, and is subject to change. The location and extent of wetlands and other waters is approximate. There may be unmapped wetlands and other waters present that are subject to regulation. A current Oregon Department of State Lands-approved wetland delineation is required for state removal-fill permits. You are advised to contact the Department of State Lands and the U.S. Army Corps of Engineers with any regulatory questions.

MAP PRODUCED BY: **LCOG** LANE COUNCIL OF GOVERNMENTS
WETLAND DATA PROVIDED BY: **SWCA** ENVIRONMENTAL CONSULTANTS
Sound Science. Creative Solutions.

Date of map preparation: 12/6/2011





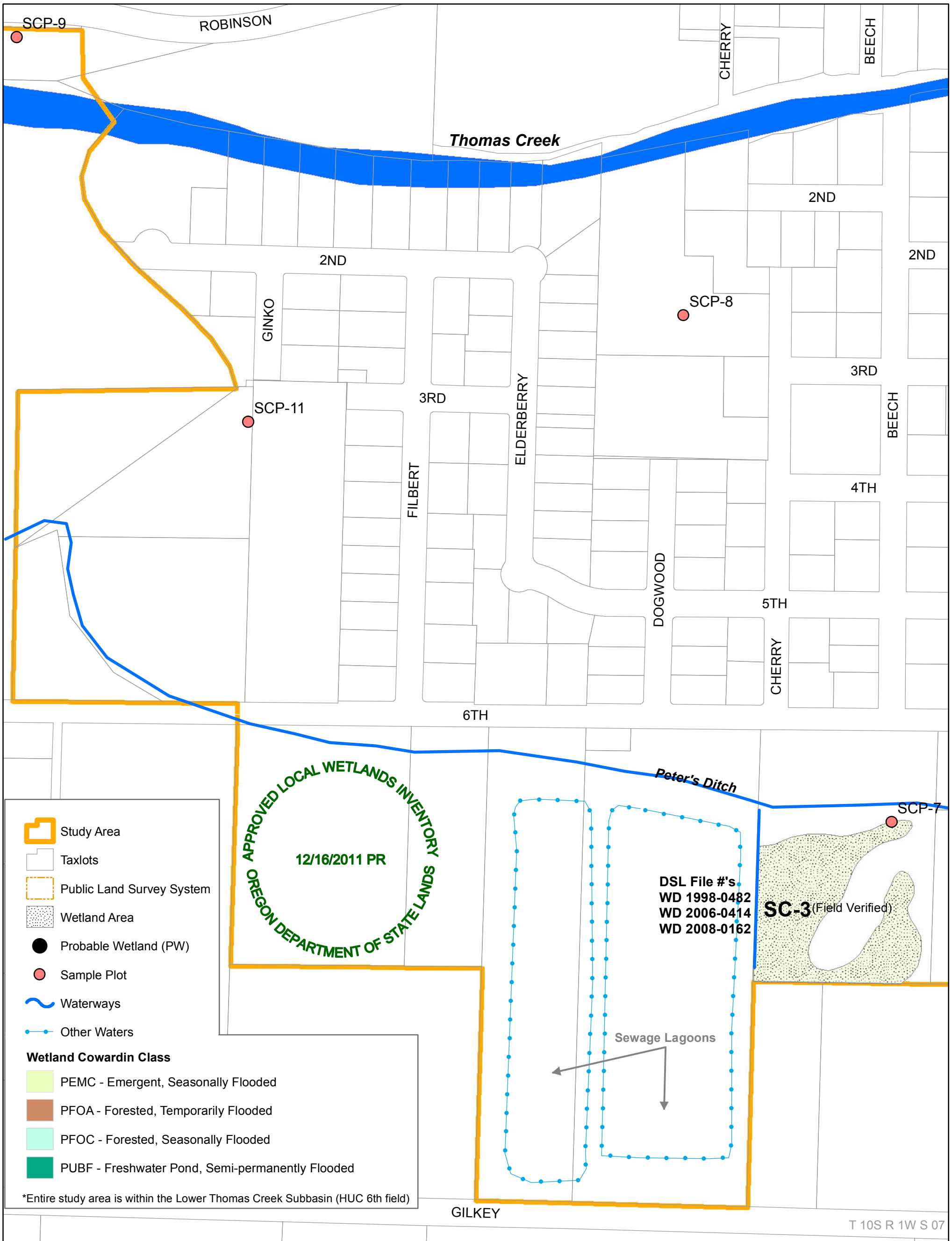
Sheet 2 -- City of Scio Local Wetlands Inventory -- A-1

Information shown on this map is for planning purposes, represents the conditions that exist at the map date, and is subject to change. The location and extent of wetlands and other waters is approximate. There may be unmapped wetlands and other waters present that are subject to regulation. A current Oregon Department of State Lands-approved wetland delineation is required for state removal-fill permits. You are advised to contact the Department of State Lands and the U.S. Army Corps of Engineers with any regulatory questions.

MAP PRODUCED BY: **LCOG** LANE COUNCIL OF GOVERNMENTS
 WETLAND DATA PROVIDED BY: **SWCA** ENVIRONMENTAL CONSULTANTS
Sound Science. Creative Solutions.

Date of map preparation: 12/6/2011





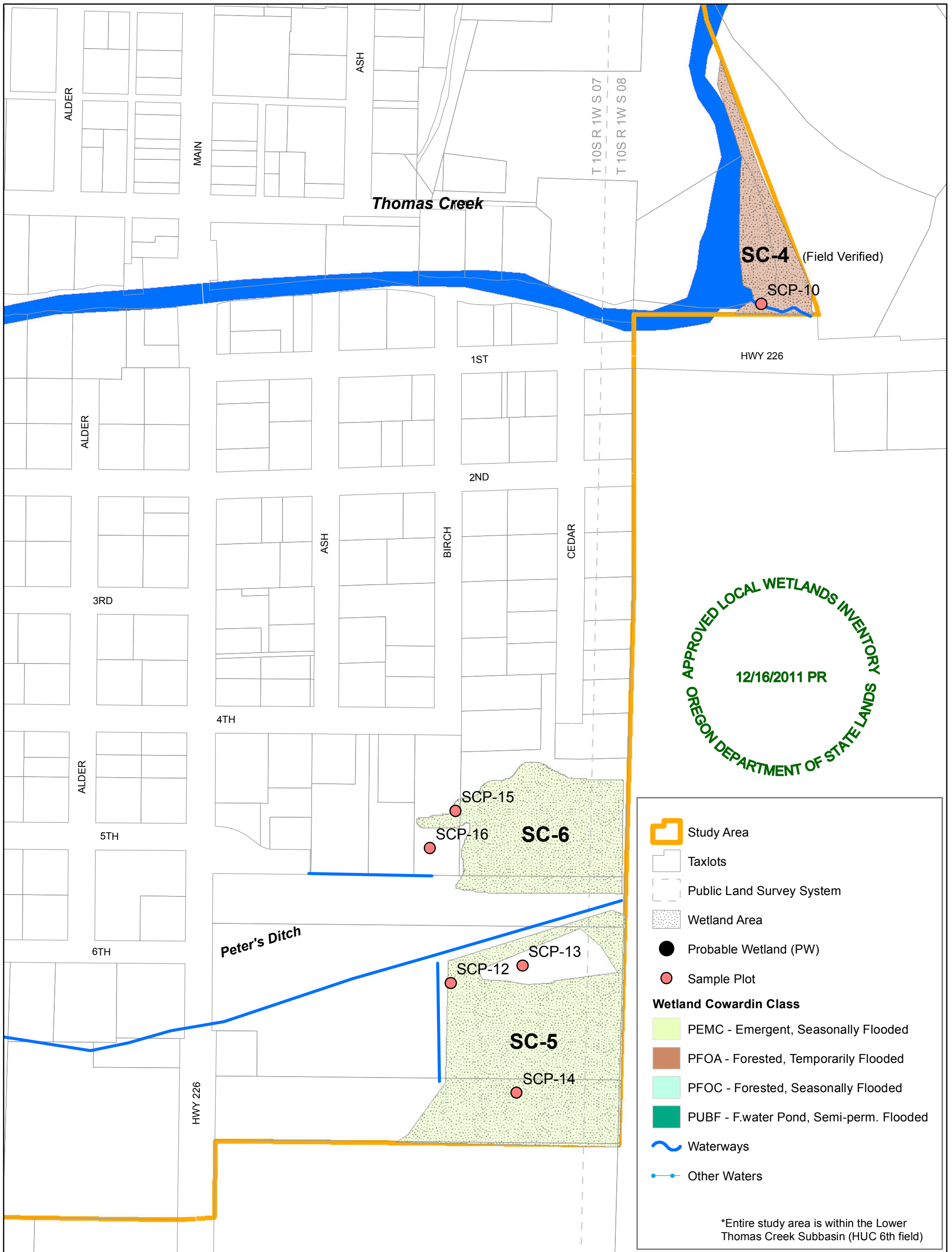
Sheet 3 -- City of Scio Local Wetlands Inventory -- A-2

Information shown on this map is for planning purposes, represents the conditions that exist at the map date, and is subject to change. The location and extent of wetlands and other waters is approximate. There may be unmapped wetlands and other waters present that are subject to regulation. A current Oregon Department of State Lands-approved wetland delineation is required for state removal-fill permits. You are advised to contact the Department of State Lands and the U.S. Army Corps of Engineers with any regulatory questions.

MAP PRODUCED BY: **LCOG** LANE COUNCIL OF GOVERNMENTS

WETLAND DATA PROVIDED BY: **SWCA** ENVIRONMENTAL CONSULTANTS
Sound Science. Creative Solutions.

Date of map preparation: 12/6/2011



Sheet 4 -- City of Scio Local Wetlands Inventory -- A-3

Information shown on this map is for planning purposes, represents the conditions that exist at the map date, and is subject to change. The location and extent of wetlands and other waters is approximate. There may be unmapped wetlands and other waters present that are subject to regulation. A current Oregon Department of State Lands-approved wetland delineation is required for state removal-fill permits. You are advised to contact the Department of State Lands and the U.S. Army Corps of Engineers with any regulatory questions.

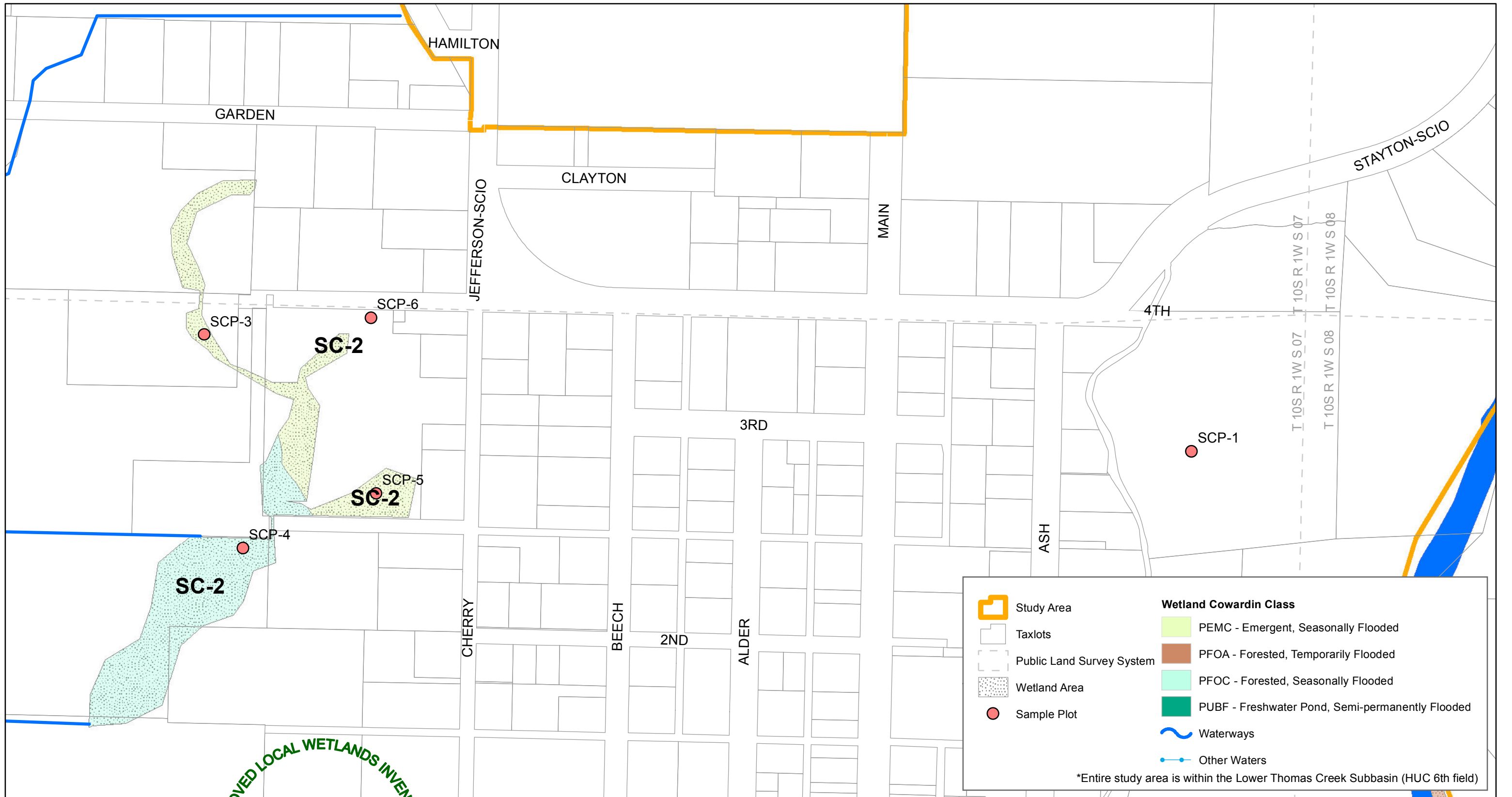
MAP PRODUCED BY:
LCOG
LANE COUNCIL OF GOVERNMENTS

WETLAND DATA PROVIDED BY:
SWCA
ENVIRONMENTAL CONSULTANTS
Sound Science. Creative Solutions.

Date of map preparation: 12/6/2011



0 250 500 1,000 Feet



APPROVED LOCAL WETLANDS INVENTORY
 12/16/2011 PR
 OREGON DEPARTMENT OF STATE LANDS

Sheet 5 -- City of Scio Local Wetlands Inventory -- A-4

Information shown on this map is for planning purposes, represents the conditions that exist at the map date, and is subject to change. The location and extent of wetlands and other waters is approximate. There may be unmapped wetlands and other waters present that are subject to regulation. A current Oregon Department of State Lands-approved wetland delineation is required for state removal-fill permits. You are advised to contact the Department of State Lands and the U.S. Army Corps of Engineers with any regulatory questions.

MAP PRODUCED BY:
LCOG
 LANE COUNCIL OF GOVERNMENTS

WETLAND DATA PROVIDED BY:
SWCA
 ENVIRONMENTAL CONSULTANTS
 Sound Science. Creative Solutions.

Date of map preparation: 12/6/2011





Sheet 6 -- City of Scio Local Wetlands Inventory -- A-5

Information shown on this map is for planning purposes, represents the conditions that exist at the map date, and is subject to change. The location and extent of wetlands and other waters is approximate. There may be unmapped wetlands and other waters present that are subject to regulation. A current Oregon Department of State Lands-approved wetland delineation is required for state removal-fill permits. You are advised to contact the Department of State Lands and the U.S. Army Corps of Engineers with any regulatory questions.

MAP PRODUCED BY:
LCOG
 LANE COUNCIL OF GOVERNMENTS

WETLAND DATA PROVIDED BY:
SWCA
 ENVIRONMENTAL CONSULTANTS
 Sound Science. Creative Solutions.

Date of map preparation: 12/6/2011

