

Cottage Grove Local Wetland Inventory Map Index

APPROVED LOCAL WETLANDS INVENTORY
1/5/2012 LM
OREGON DEPARTMENT OF STATELANDS

A-1

A-2

A-3

B-1

B-2

B-3

Wetland Code	Acres	Wetland Code	Acres
1	11.07	23	0.48
2	0.28	24	0.63
3	3.42	25	19.92
4	0.72	26	1.14
5	0.20	27	9.46
6	0.52	WD1992-0202-1	0.13
7	1.29	WD1992-0202-2	1.13
8-d	6.11	WD1992-0202-3	0.28
9	0.73	WD1992-0202-4	0.51
10	0.34	WD1992-0202-5	0.28
11	0.02	WD1992-0202-6	0.68
12	0.00	WD1992-0202-7	1.89
13	2.00	WD1992-0202-8	1.21
14	0.36	WD1994-0190	38.91
15	1.59	WD1996-0030-1	7.42
16	1.20	WD1996-0030-2	0.09
17	1.15	WD1999-0485-1	0.17
18	0.37	WD1999-0485-2	0.09
19	0.45	WD1999-0485-3	0.32
20	1.10	WD2001-0460	0.17
21	1.54	WD2001-0471-1a-d	5.78
22	0.15	WD2001-0471-2	0.13

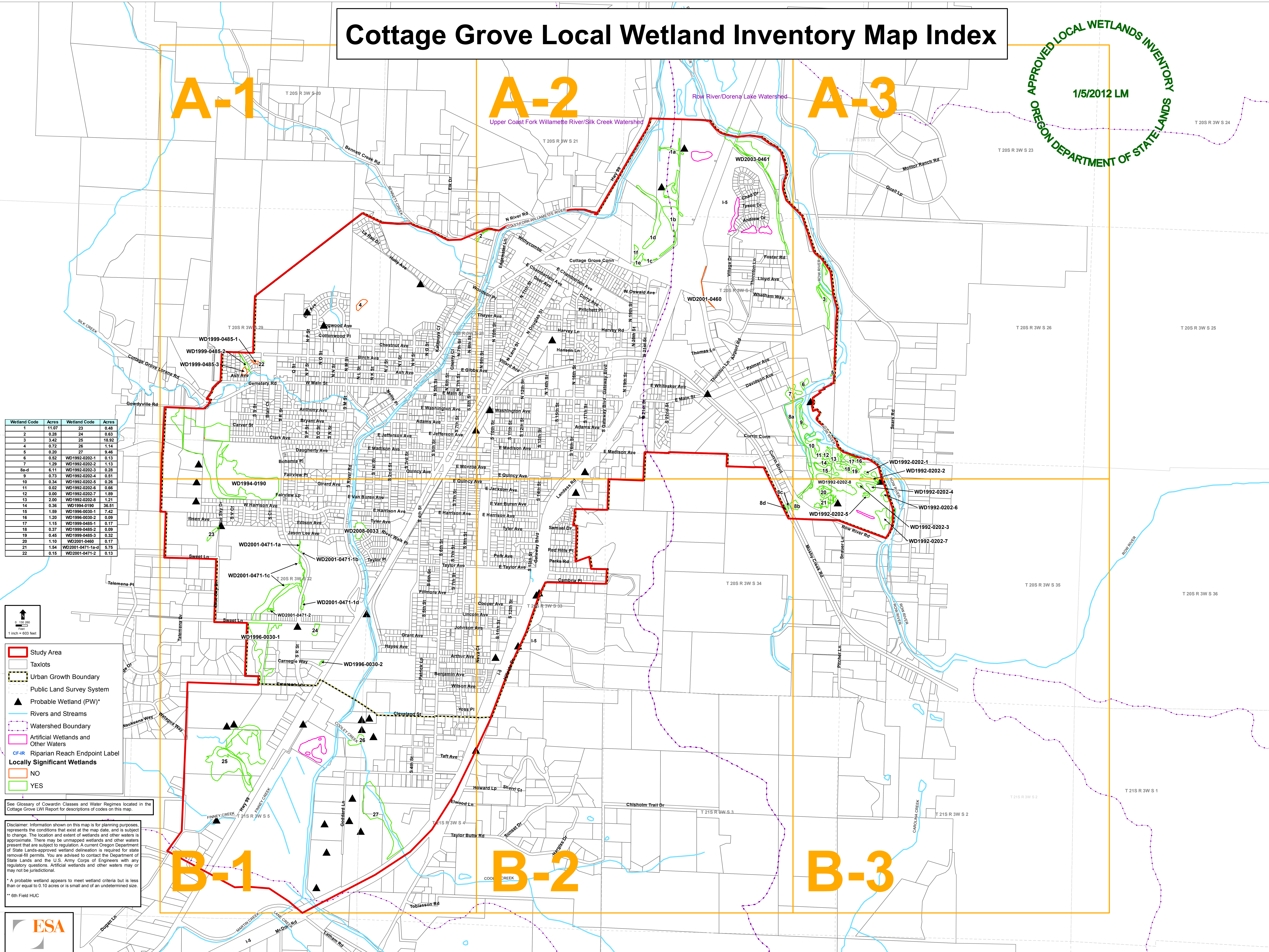
0 100 200 Feet
1 inch = 603 feet

- Study Area
- Taxlots
- Urban Growth Boundary
- Public Land Survey System
- ▲ Probable Wetland (PW)*
- Rivers and Streams
- Watershed Boundary
- Artificial Wetlands and Other Waters
- CF-IR Riparian Reach Endpoint Label
- Locally Significant Wetlands**
- NO
- YES

See Glossary of Cowardin Classes and Water Regimes located in the Cottage Grove LWI Report for descriptions of codes on this map.

Disclaimer: Information shown on this map is for planning purposes, represents the conditions that exist at the map date, and is subject to change. The location and extent of wetlands and other waters is approximate. There may be unmapped wetlands and other waters present that are subject to regulation. A current Oregon Department of State Lands-approved wetland delineation is required for state removal-fill permits. You are advised to contact the Department of State Lands and the U.S. Army Corps of Engineers with any regulatory questions. Artificial wetlands and other waters may or may not be jurisdictional.

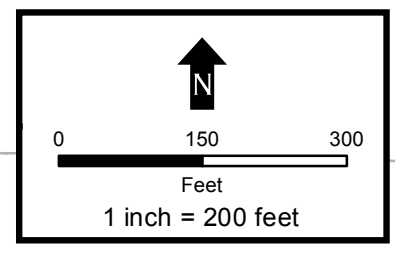
* A probable wetland appears to meet wetland criteria but is less than or equal to 0.10 acres or is small and of an undetermined size.
** 6th Field HUC



Cottage Grove Local Wetland Inventory Map

A-1

APPROVED LOCAL WETLANDS INVENTORY
1/5/2012 LM
OREGON DEPARTMENT OF STATE LANDS



Legend

- Study Area
- Taxlots
- Urban Growth Boundary
- Public Land Survey System
- Sample Plot (SP #)***
- ▲ Probable Wetland (PW) *
- Rivers and Streams
- Watershed Boundary**
- Artificial Wetlands and Other Waters
- Riparian Reach Endpoint
- Riparian Reach Endpoint Label

Locally Significant Wetlands

- NO
- YES

See Glossary of Cowardin Classes and Water Regimes located in the Cottage Grove LWI Report for descriptions of codes on this map.

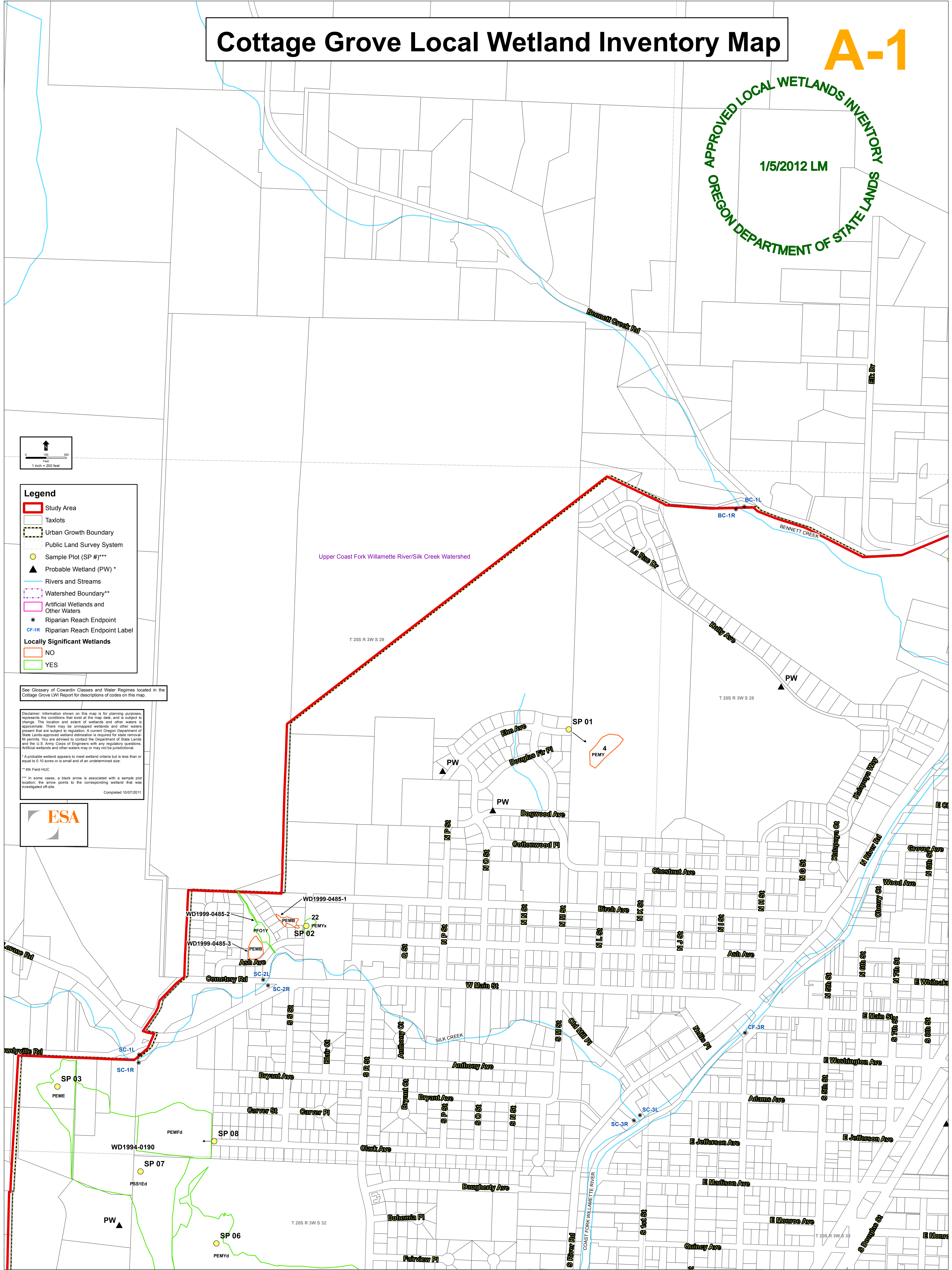
Disclaimer: Information shown on this map is for planning purposes, represents the conditions that exist at the map date, and is subject to change. The location and extent of wetlands and other waters is approximate. There may be unmaped wetlands and other waters present that are subject to regulation. A current Oregon Department of State Lands approved wetland delineation is required for state removal-fill permits. You are advised to contact the Department of State Lands and the U.S. Army Corps of Engineers with any regulatory questions. Artificial wetlands and other waters may or may not be jurisdictional.

* A probable wetland appears to meet wetland criteria but is less than or equal to 0.10 acres or is small and of an undetermined size.

** 6th Field HUC

*** In some cases, a black arrow is associated with a sample plot location; the arrow points to the corresponding wetland that was investigated off-site.

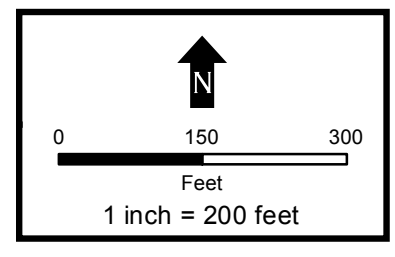
Completed 10/07/2011



Cottage Grove Local Wetland Inventory Map

A-2

APPROVED LOCAL WETLANDS INVENTORY
1/5/2012 LM
OREGON DEPARTMENT OF STATE LANDS



- Legend**
- Study Area
 - Taxlots
 - Urban Growth Boundary
 - Public Land Survey System
 - Sample Plot (SP #)***
 - ▲ Probable Wetland (PW) *
 - Rivers and Streams
 - Watershed Boundary**
 - Artificial Wetlands and Other Waters
 - Riparian Reach Endpoint
 - CF-1R Riparian Reach Endpoint Label
- Locally Significant Wetlands**
- NO
 - YES

See Glossary of Cowardin Classes and Water Regimes located in the Cottage Grove LWI Report for descriptions of codes on this map.

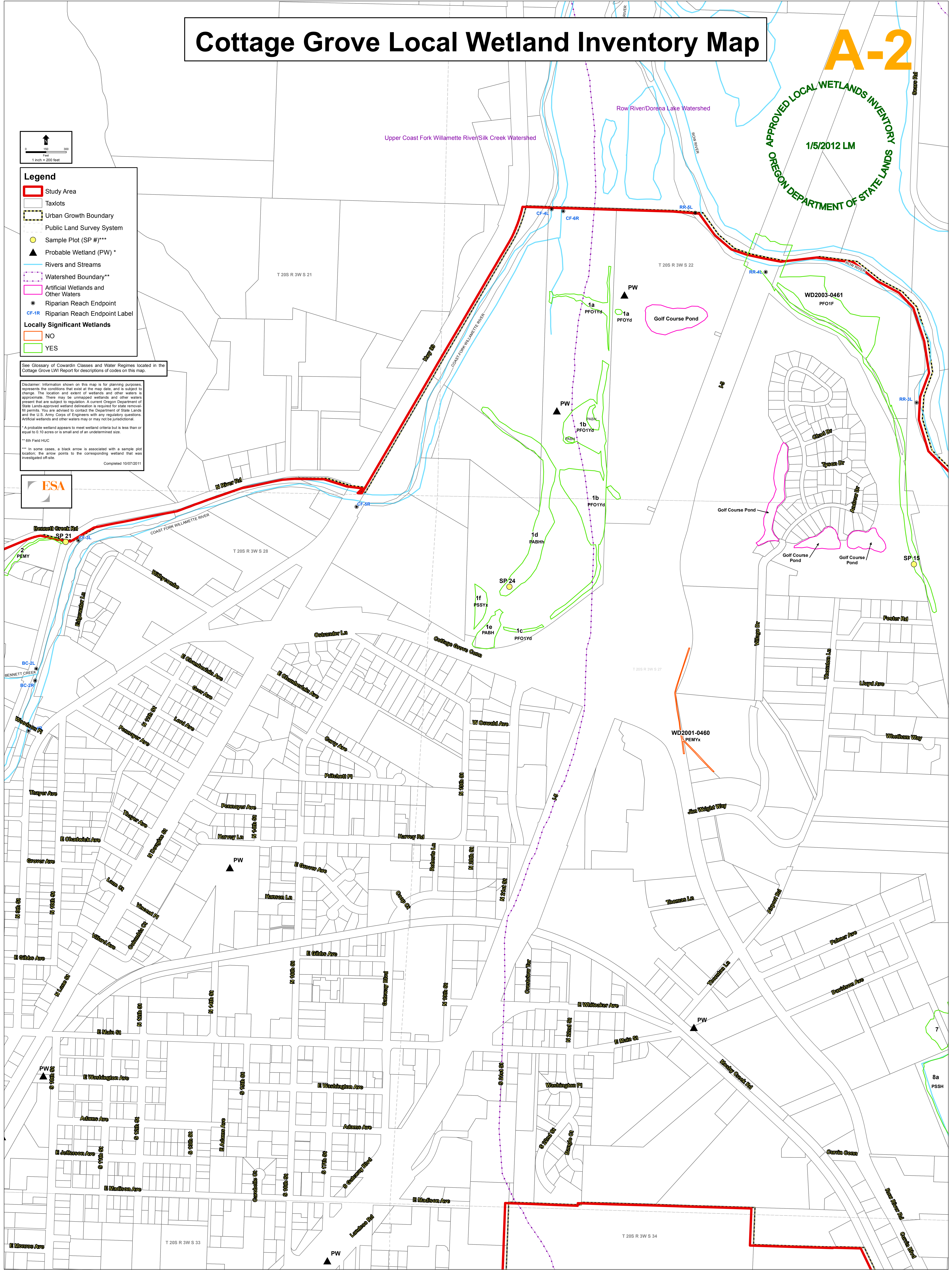
Disclaimer: Information shown on this map is for planning purposes, represents the conditions that exist at the map date, and is subject to change. The location and extent of wetlands and other waters is approximate. There may be unmapped wetlands and other waters present that are subject to regulation. A current Oregon Department of State Lands-approved wetland delineation is required for state removal-ill permits. You are advised to contact the Department of State Lands and the U.S. Army Corps of Engineers with any regulatory questions. Artificial wetlands and other waters may or may not be jurisdictional.

* A probable wetland appears to meet wetland criteria but is less than or equal to 0.10 acres or is small and of an undetermined size.

** 6th Field HUC

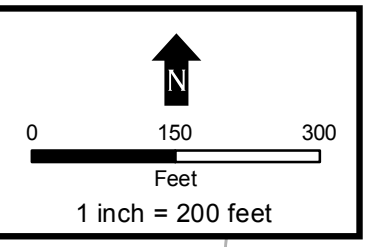
*** In some cases, a black arrow is associated with a sample plot location; the arrow points to the corresponding wetland that was investigated off-site.

Completed 10/07/2011



Cottage Grove Local Wetland Inventory Map

A-3



Legend

- Study Area
- Taxlots
- Urban Growth Boundary
- Public Land Survey System
- Sample Plot (SP #)***
- ▲ Probable Wetland (PW) *
- Rivers and Streams
- Watershed Boundary**
- Artificial Wetlands and Other Waters
- Riparian Reach Endpoint
- CF-1R Riparian Reach Endpoint Label

Locally Significant Wetlands

- NO
- YES

See Glossary of Cowardin Classes and Water Regimes located in the Cottage Grove LWI Report for descriptions of codes on this map.

Disclaimer: Information shown on this map is for planning purposes, represents the conditions that exist at the map date, and is subject to change. The location and extent of wetlands and other waters is approximate. There may be unmapped wetlands and other waters present that are subject to regulation. A current Oregon Department of State Lands-approved wetland delineation is required for state removal fill permits. You are advised to contact the Department of State Lands and the U.S. Army Corps of Engineers with any regulatory questions. Artificial wetlands and other waters may or may not be jurisdictional.

* A Probable wetland appears to meet wetland criteria but is less than or equal to 0.10 acres or is small and of an undetermined size.

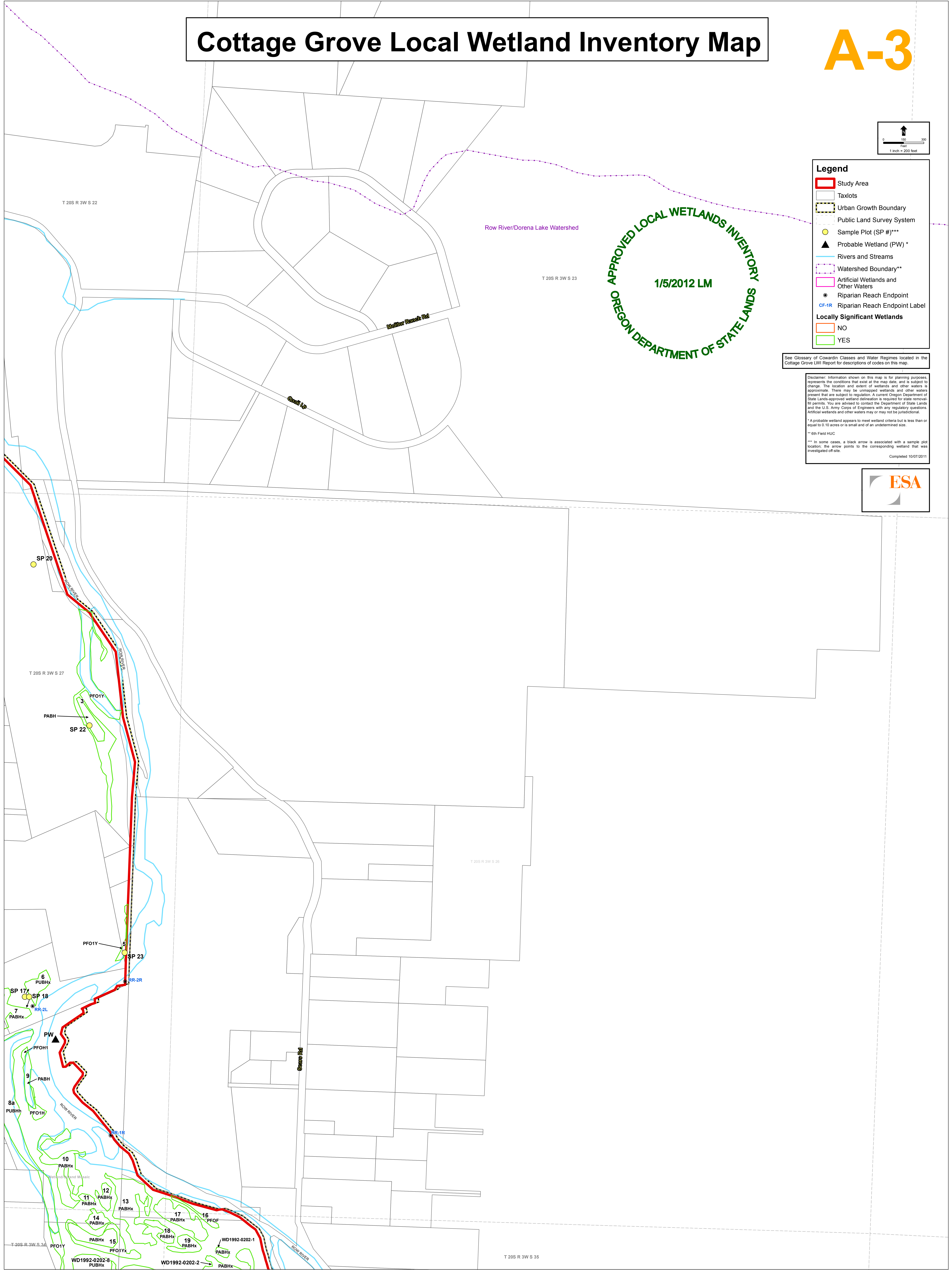
** 6th Field HUC

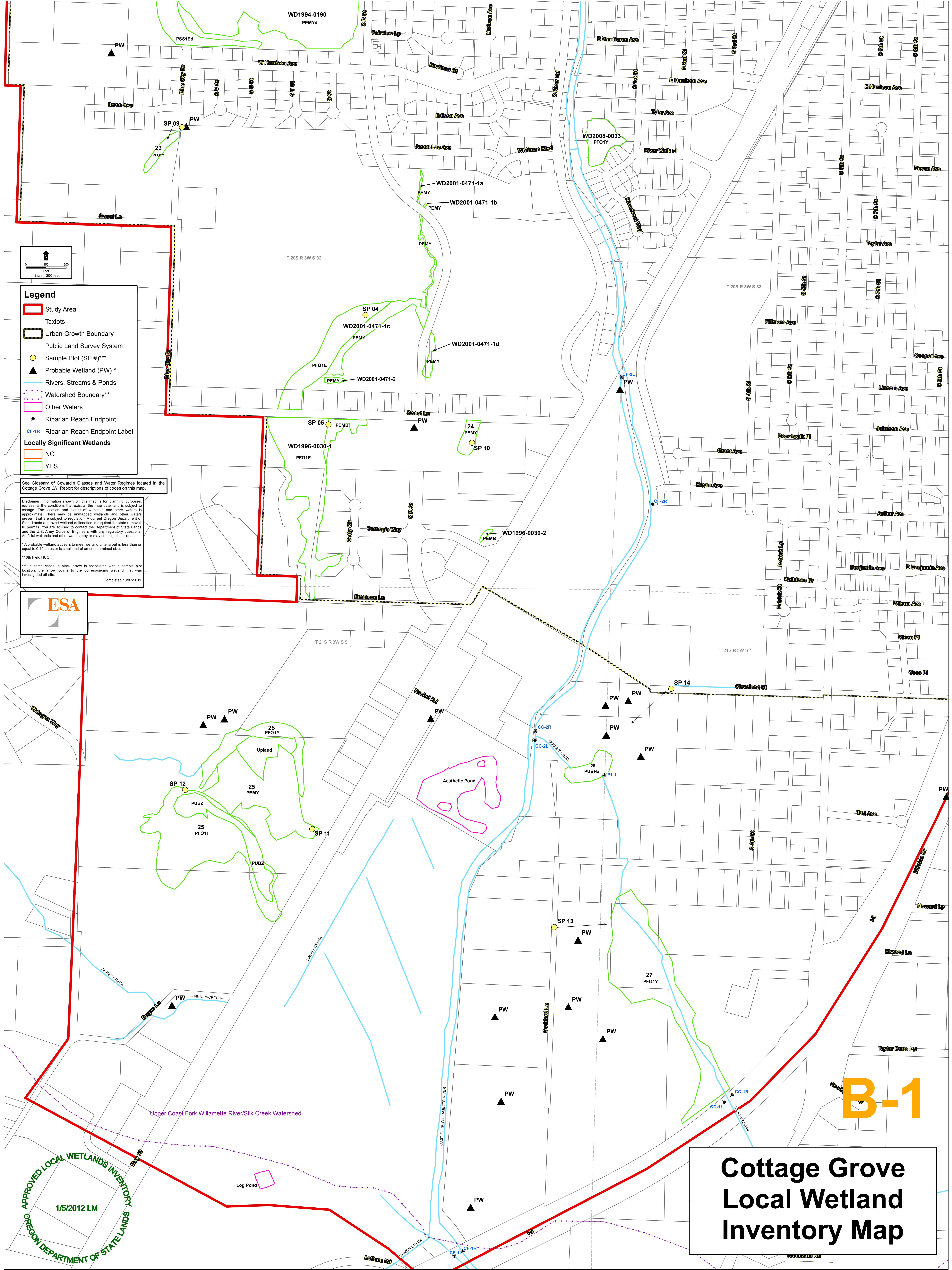
*** In some cases, a black arrow is associated with a sample plot location; the arrow points to the corresponding wetland that was investigated off-site.

Completed 10/07/2011



APPROVED LOCAL WETLANDS INVENTORY
1/5/2012 LM
OREGON DEPARTMENT OF STATE LANDS





Legend

- Study Area
- Taxlots
- Urban Growth Boundary
- Public Land Survey System
- Sample Plot (SP #)***
- ▲ Probable Wetland (PW) *
- Rivers, Streams & Ponds
- Watershed Boundary**
- Other Waters
- Riparian Reach Endpoint
- CF-1R Riparian Reach Endpoint Label

Locally Significant Wetlands

- NO
- YES

See Glossary of Cowardin Classes and Water Regimes located in the Cottage Grove LWI Report for descriptions of codes on this map.

Disclaimer: Information shown on this map is for planning purposes, represents the conditions that exist at the map date, and is subject to change. The location and extent of wetlands and other waters present that are subject to regulation. A current Oregon Department of State Lands-approved wetland delineation is required for state removal-fill permits. You are advised to contact the Department of State Lands and the U.S. Army Corps of Engineers with any regulatory questions. Artificial wetlands and other waters may or may not be jurisdictional.

* A probable wetland appears to meet wetland criteria but is less than or equal to 0.10 acres or is small and of an undetermined size.

** 6th Field HUC

*** In some cases, a black arrow is associated with a sample plot location; the arrow points to the corresponding wetland that was investigated off-site.

Completed 10/07/2011



B-1

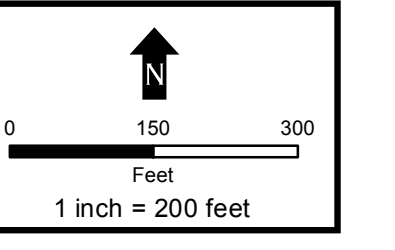
**Cottage Grove
Local Wetland
Inventory Map**

APPROVED LOCAL WETLANDS INVENTORY
1/5/2012 LM
OREGON DEPARTMENT OF STATE LANDS

Cottage Grove Local Wetland Inventory Map

APPROVED LOCAL WETLANDS INVENTORY
1/5/2012 LM
OREGON DEPARTMENT OF STATE LANDS

B-3



Legend

- Study Area
- Taxlots
- Urban Growth Boundary
- Public Land Survey System
- Sample Plot (SP #)***
- ▲ Probable Wetland (PW) *
- Rivers and Streams
- Watershed Boundary**
- Artificial Wetlands and Other Waters
- Riparian Reach Endpoint
- CF-1R Riparian Reach Endpoint Label

Locally Significant Wetlands

- NO
- YES

See Glossary of Cowardin Classes and Water Regimes located in the Cottage Grove LWI Report for descriptions of codes on this map.

Disclaimer: Information shown on this map is for planning purposes, represents the conditions that exist at the map date, and is subject to change. The location and extent of wetlands and other waters is approximate. There may be unmanaged wetlands and other waters present that are subject to regulation. A current Oregon Department of State Lands-approved wetlands delineation is required for state removal fill permits. You are advised to contact the Department of State Lands and the U.S. Army Corps of Engineers with any regulatory questions. Artificial wetlands and other waters may or may not be jurisdictional.

* A probable wetland appears to meet wetland criteria but is less than or equal to 0.10 acres or is small and of an undetermined size.

** 6th Field HUC

*** In some cases, a black arrow is associated with a sample plot location; the arrow points to the corresponding wetland that was investigated off-site.

Completed 10/07/2011

