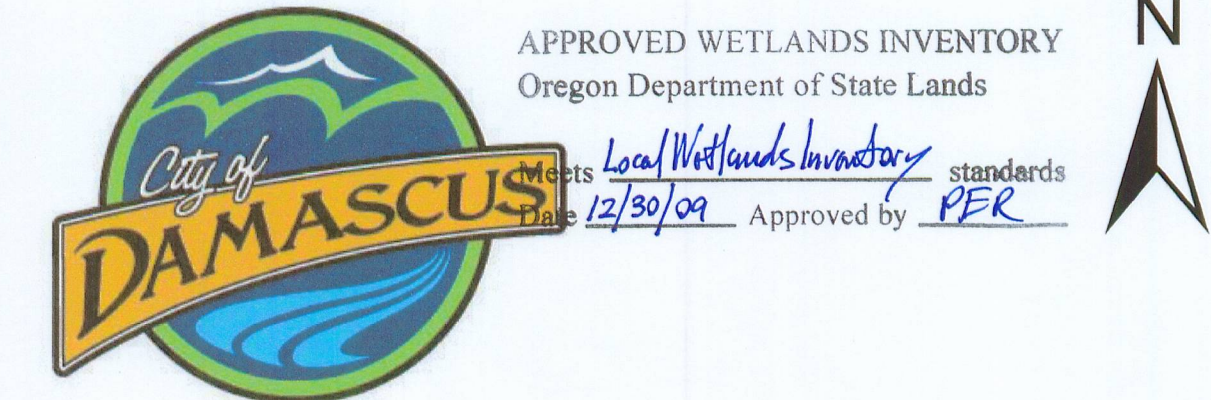


City of Damascus

Local Wetlands Inventory Update May 2008 NW Map #1 of 4



- Streets
- Streams
- Wetlands, Field Verified
- Wetlands, Not Field Verified
- Possible Wetlands (PW)
- Ponds
- City Limits
- Areas added to City following LWI field work
- Urban Growth Boundary
- County Boundary
- Sample Plots
- Watershed boundary
- Damascus Taxlots
- Township sections

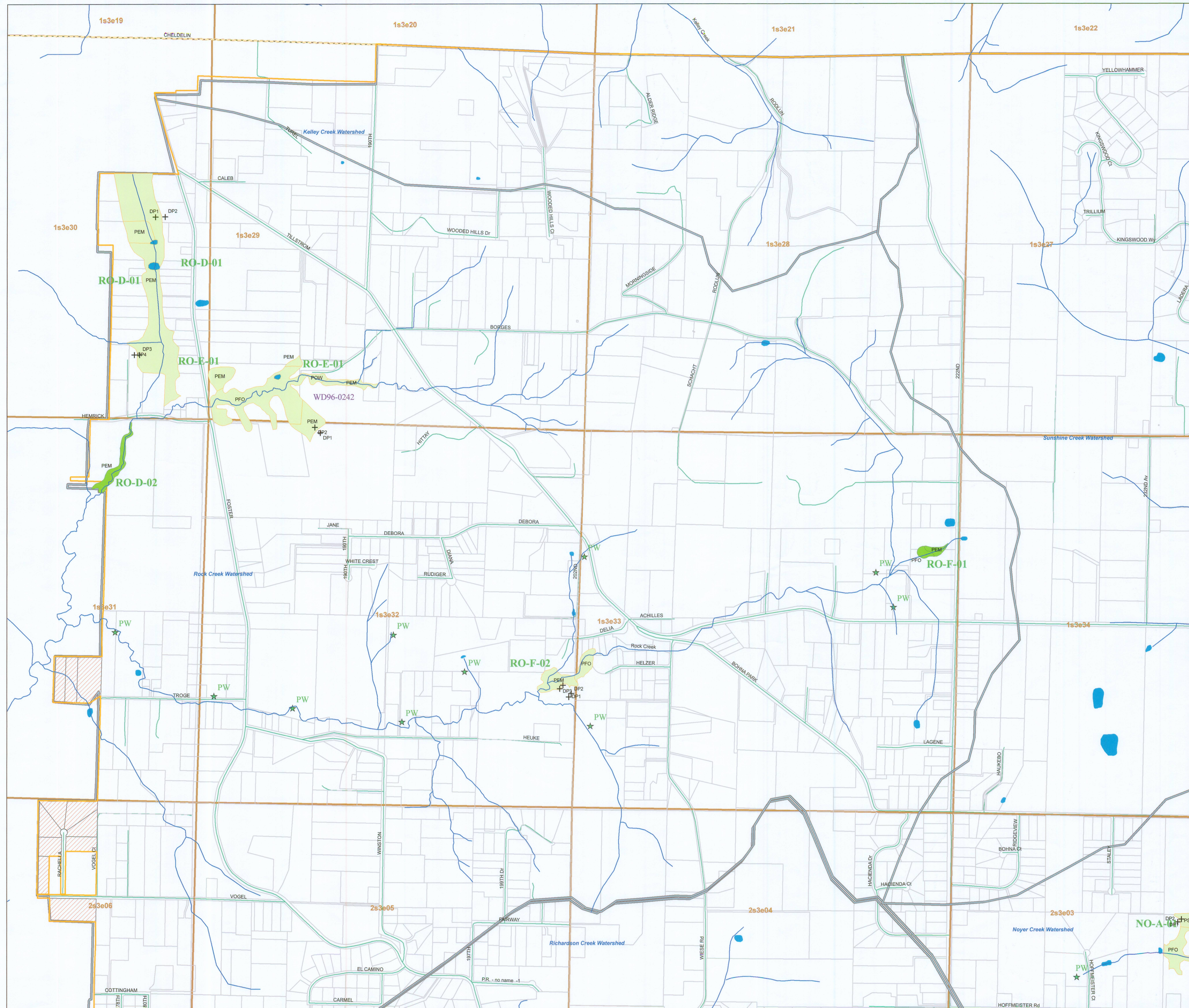
Note:
Wetlands Unique ID's are referenced in dark green.
Cowardin Class Types are referenced in black.
DSL delineation numbers are referenced in dark purple.
Sources: Winterbrook; wetlands, watershed boundary, streams, and ponds
Metro RLIS; taxlots, townships, and jurisdictional boundaries

Information shown on this map is for planning purposes only and wetland information is subject to change. There may be unmapped wetlands subject to regulations and all wetland boundary mapping is approximate. In all cases, actual field conditions determine wetland boundaries. You are advised to contact the Oregon Department of State Lands and the U.S. Corps of Engineers with any regulatory questions.

This map and other information have been compiled for the Damascus Goal 5 Planning. They are not intended to be complete and accurate for any other purposes. Specifically this information is not intended to be complete for purposes of land use restriction, zoning, title, size, and suitability of the property for specific uses.

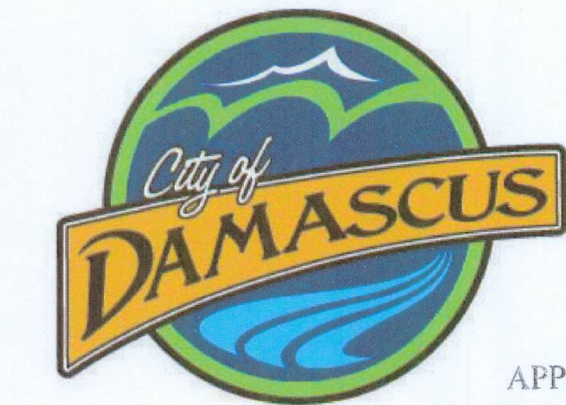
Projection:
State Plane Oregon North FIPS 3601
Datum NAD83

0 750 1,500 3,000 Feet



City of Damascus

Local Wetlands Inventory Update May 2008 NE Map #2 of 4



APPROVED WETLANDS INVENTORY
Oregon Department of State Lands

Meets *Local Wetlands Inventory* standards
Date *2/20/09* Approved by *PER*



- Streets
- Streams
- Wetlands, Field Verified
- Wetlands, Not Field Verified
- Possible Wetlands (PW)
- Ponds
- City Limits
- Urban Growth Boundary
- County Boundary
- Sample Plots
- Watershed boundary
- Damascus Taxlots
- Township sections

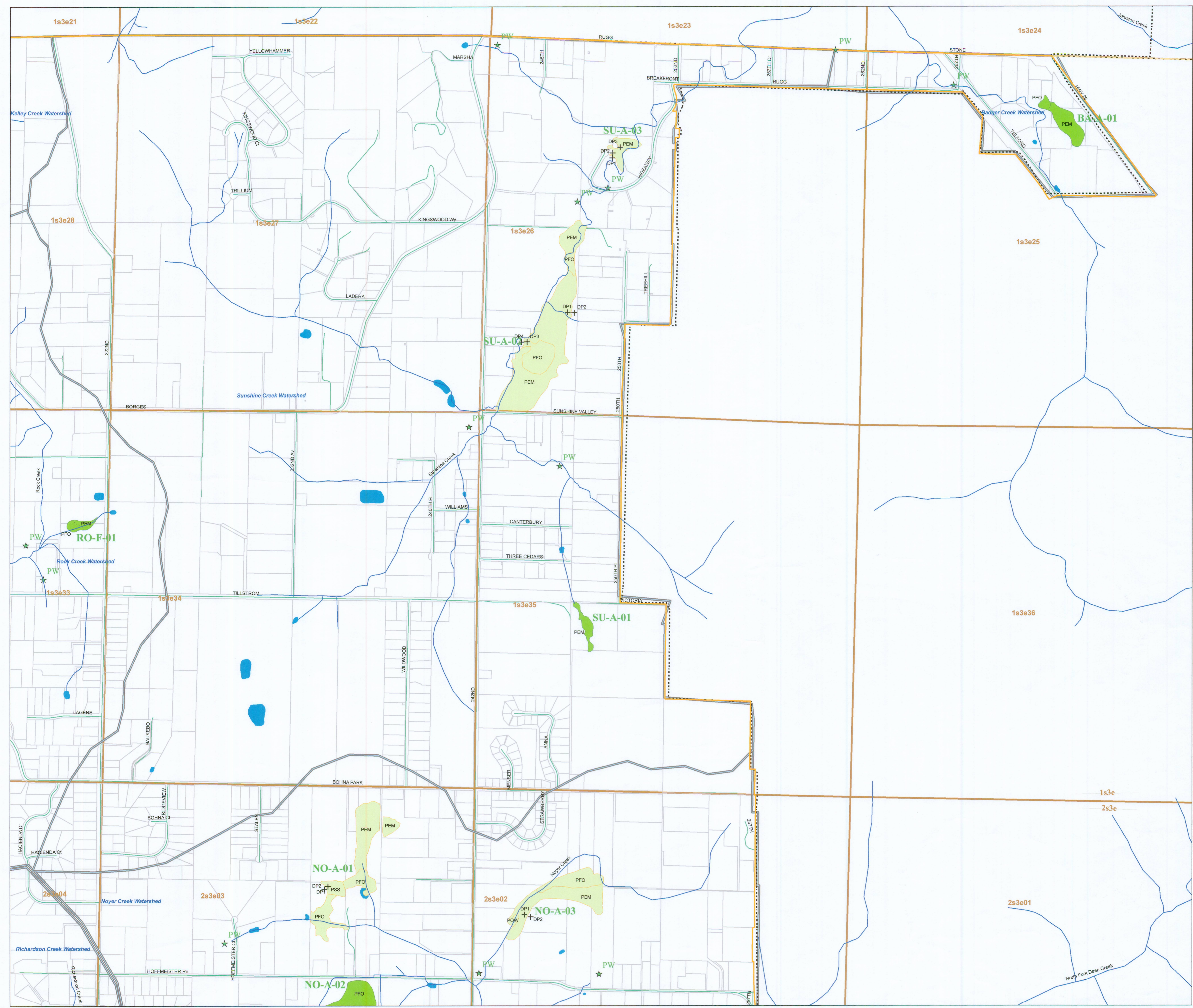
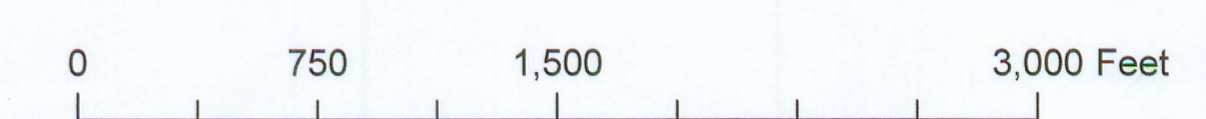
Note:
Wetlands Unique ID's are referenced in dark green.
Cowardin Class Types are referenced in black.
DSL delineation numbers are referenced in dark purple.

Sources: Winterbrook; wetlands, watershed boundary, streams, and ponds
Metro RLIS; taxlots, townships, and jurisdictional boundaries

Information shown on this map is for planning purposes only and wetland information is subject to change. There may be unmapped wetlands subject to regulations and all wetland boundary mapping is approximate. In all cases, actual field conditions determine wetland boundaries. You are advised to contact the Oregon Department of State Lands and the U.S. Corps of Engineers with any regulatory questions.

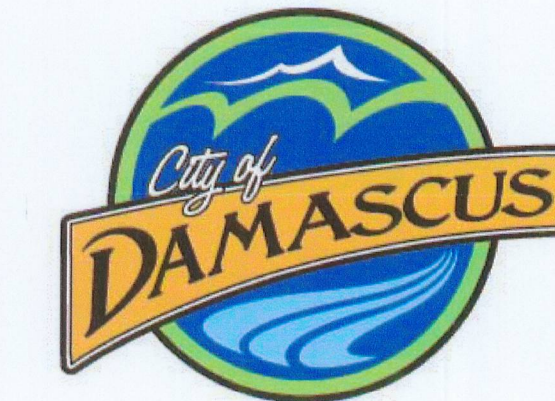
This map and other information have been compiled for the Damascus Goal 5 Planning. They are not intended to be complete and accurate for any other purposes. Specifically this information is not intended to be complete for purposes of land use restriction, zoning, title, size, and suitability of the property for specific uses.

Projection:
State Plane Oregon North FIPS 3601
Datum NAD83



City of Damascus

Local Wetlands Inventory Update May 2008 SW Map #3 of 4



APPROVED WETLANDS INVENTORY
Oregon Department of State Lands

Meets *Local Wetlands Inventory* standards
Date *12/30/09* Approved by *PER*



- Streams
- Wetlands, Field Verified
- Wetlands, Not Field Verified
- Possible Wetlands (PW)
- Ponds
- City Limits
- Areas added to City following LWI field work
- Urban Growth Boundary
- County Boundary
- Sample Plots
- Watershed boundary
- Damascus Taxlots
- Township sections
- Streets

Note:
Wetlands Unique ID's are referenced in dark green.
Cowardin Class Types are referenced in black.
DSL delineation numbers are referenced in dark purple.

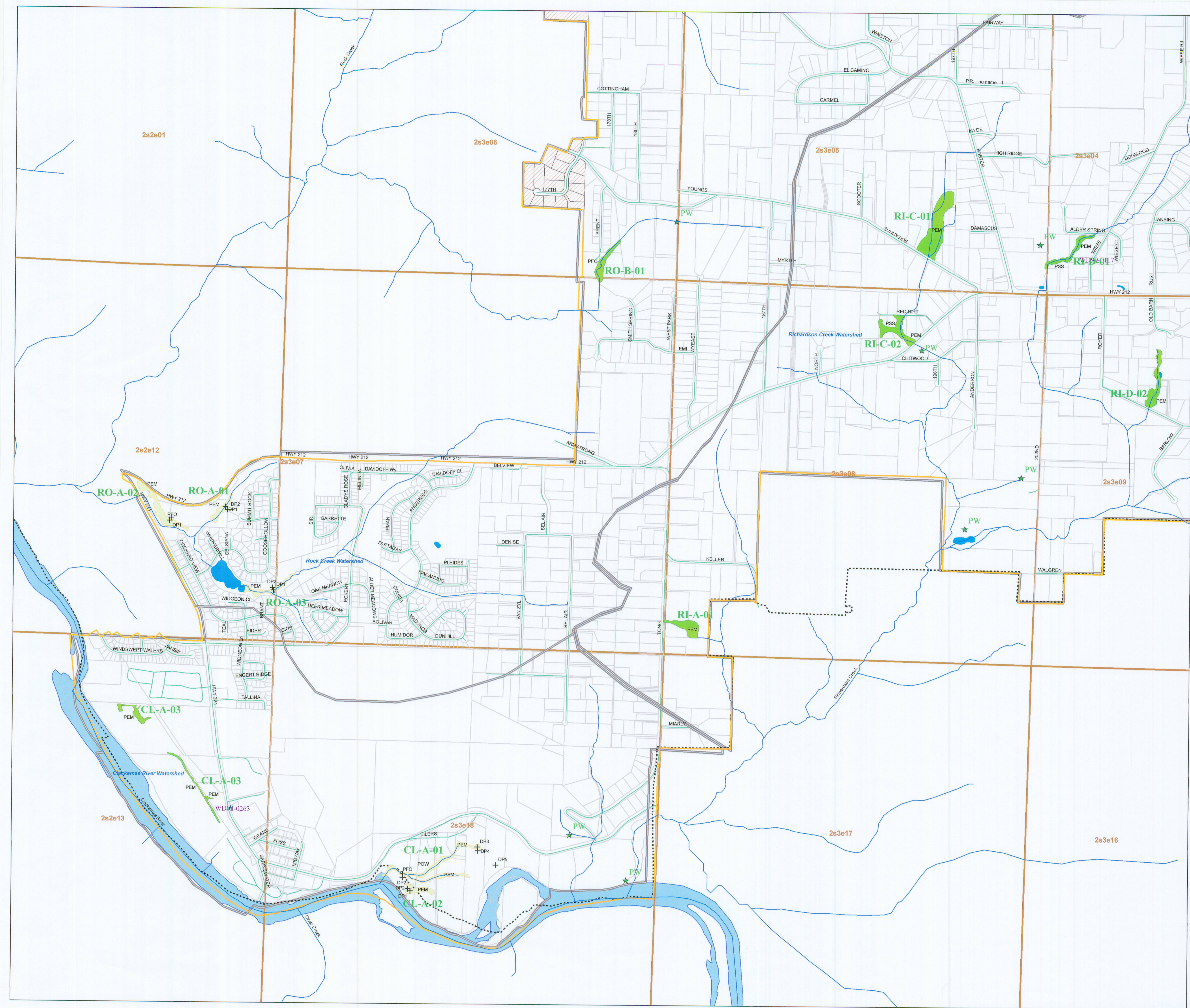
Sources: Winterbrook; wetlands, watershed boundary, streams, and ponds
Metro RLIS; taxlots, townships, and jurisdictional boundaries

Information shown on this map is for planning purposes only and wetland information is subject to change. There may be unmapped wetlands subject to regulations and all wetland boundary mapping is approximate. In all cases, actual field conditions determine wetland boundaries. You are advised to contact the Oregon Department of State Lands and the U.S. Corps of Engineers with any regulatory questions.

This map and other information have been compiled for the Damascus Goal 5 Planning. They are not intended to be complete and accurate for any other purposes. Specifically this information is not intended to be complete for purposes of land use restriction, zoning, title, size, and suitability of the property for specific uses.

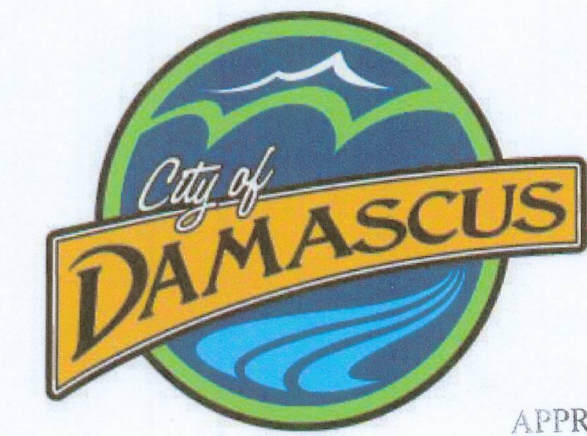
Projection:
State Plane Oregon North FIPS 3601
Datum NAD83

0 750 1,500 3,000 Feet



City of Damascus

Local Wetlands Inventory Update May 2008 SE Map #4 of 4



APPROVED WETLANDS INVENTORY
Oregon Department of State Lands
Meets *Local Wetland Inventory* standards
Date 12/30/09 Approved by *JK*

- Streets
- Streams
- Wetlands, Field Verified
- Wetlands, Not Field Verified
- Possible Wetlands (PW)
- Ponds
- City Limits
- Urban Growth Boundary
- County Boundary
- Sample Plots
- Watershed boundary
- Damascus Taxlots
- Township sections

Note:
Wetlands Unique ID's are referenced in dark green.
Cowardin Class Types are referenced in black.
DSL delineation numbers are referenced in dark purple.

Sources: Winterbrook; wetlands, watershed boundary, streams, and ponds
Metro RLIS; taxlots, townships, and jurisdictional boundaries

Information shown on this map is for planning purposes only and wetland information is subject to change. There may be unmapped wetlands subject to regulations and all wetland boundary mapping is approximate. In all cases, actual field conditions determine wetland boundaries. You are advised to contact the Oregon Department of State Lands and the U.S. Corps of Engineers with any regulatory questions.

This map and other information have been compiled for the Damascus Goal 5 Planning. They are not intended to be complete and accurate for any other purposes. Specifically this information is not intended to be complete for purposes of land use restriction, zoning, title, size, and suitability of the property for specific uses.

Projection:
State Plane Oregon North FIPS 3601
Datum NAD83

0 750 1,500 3,000 Feet

