

Legend



SWCA
ENVIRONMENTAL CONSULTANTS

EAST EVERGREEN INDUSTRIAL SITE
LOCAL WETLAND INVENTORY
AND GOAL 5 ASSESSMENT

Source: USGS 1990. Hillsboro, Oregon 7.5' topographic quadrangle, downloaded from www.MapTech.com.

Portland Office
434 NW Sixth Avenue, Suite 304
Portland, Oregon 97209-3652
Tel 503.224.0333 Fax 503.224.1851

SITE LOCATION MAP

P:\12000\12928-203_EastEvergreenG5\Report\Figures\Figure 1 USGS_withPhoto.doc

Project 12928-203

August 2007

Figure 1

12/08/2008 AB
 OREGON DEPARTMENT OF STATE LANDS
 APPROVED LOCAL WETLANDS INVENTORY

Hillsboro East Evergreen Local Wetland Inventory

Legend

- Plots
- ▲ Culverts
- Streams
- ▨ Palustrine Open Water (POW)
- ▨ Wetland (PFO, PSS, PEM)
- ▨ Bioswale (POW)
- ▨ Ditch (POW)
- ▭ Study Area
- ▭ Watershed Boundary
- ▭ Tax Lots*

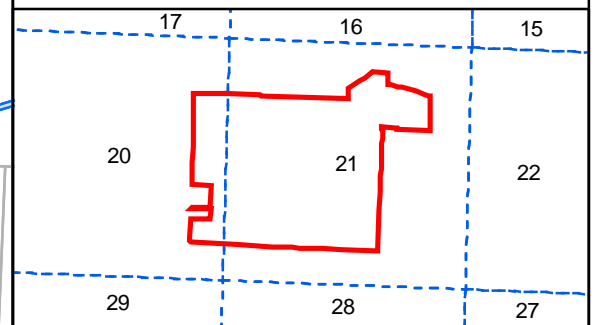
*Circled parcel numbers indicate accessed sites and field verified wetlands. Parcels 1 & 11 delineated (WD#08-0361), 20-24 delineated (WD#08-0257)

Information shown on this map is for planning purposes only and wetland information is subject to change. There may be unmapped wetlands subject to regulation and all wetland boundary mapping is approximate. In all cases, actual field conditions determine wetland boundaries. You are advised to contact the Oregon Department of State Lands and the U.S. Army Corps of Engineers with any regulatory questions;

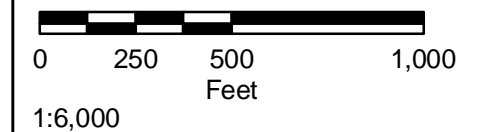
GPS plot accuracy +/- 25 ft; line accuracy +/- 50 ft.

Parcel Number and Tax Lot ID Table

Parcel #	T1N R2W Section	Tax Lot
1	20	500
2	20	600
3	20D	101
4	20D	102
5	20D	200
6	20D	300
7	20D	400
8	20D	1200
9	20D	3000
10	20D	3100
11	21	1501
12	21	1700
13	21	1800
14	21	1801
15	21	1802
16	21	1803
17	21	1804
18	21	1805
19	21	1900
20	21	2000
21	21	2001
22	21	2002
23	21	2003
24	21	2100
25	21	2101
26	21	2200
27	21	2201
28	21	2201
29	21	2300
30	21	2400
31	21	2500



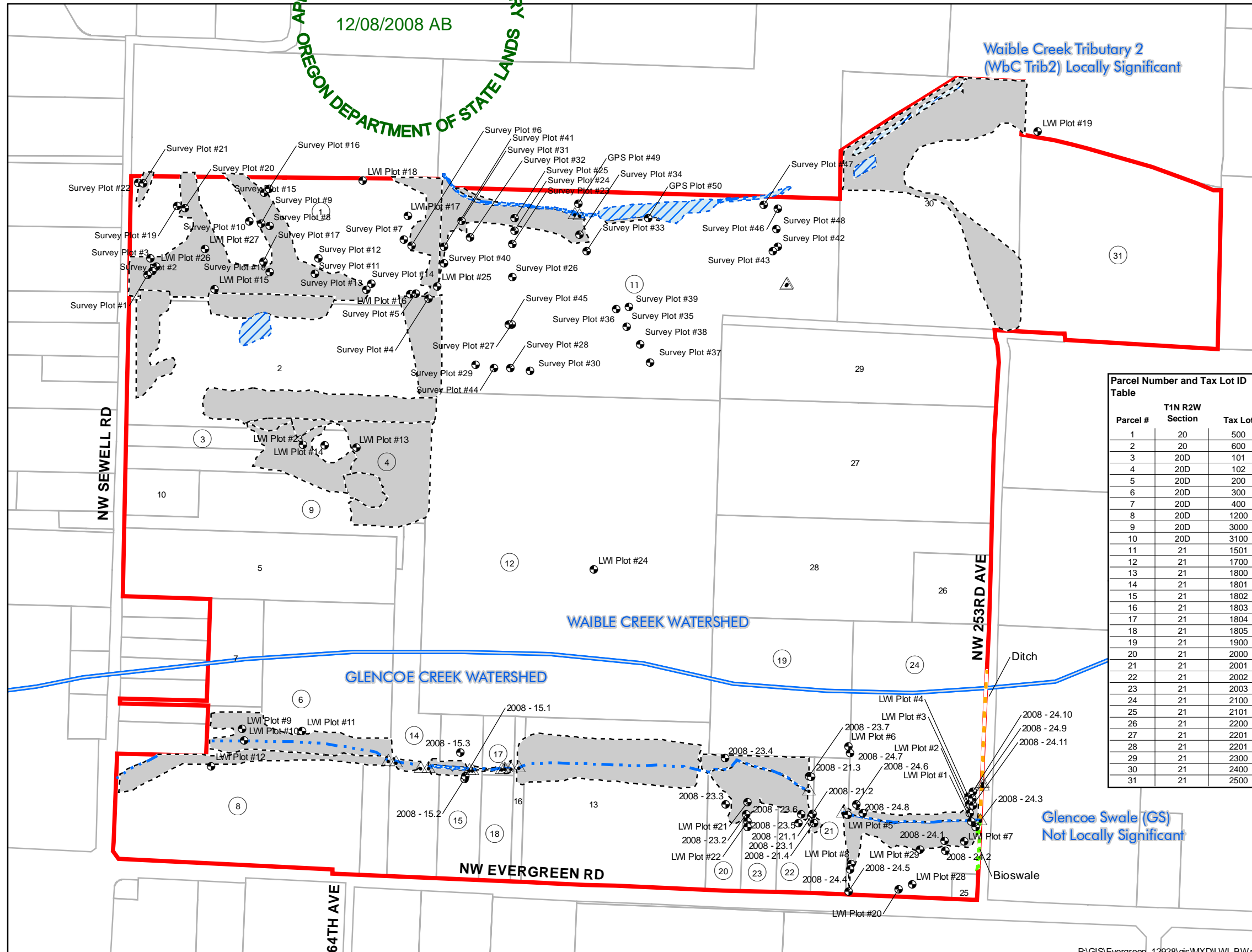
Township 1N Range 2W



SWCA
 ENVIRONMENTAL CONSULTANTS SWCA Project #12928

Sept. 12, 2008

Figure 6. LWI Map



12/08/2008 AB

Hillsboro East Evergreen Local Wetland Inventory

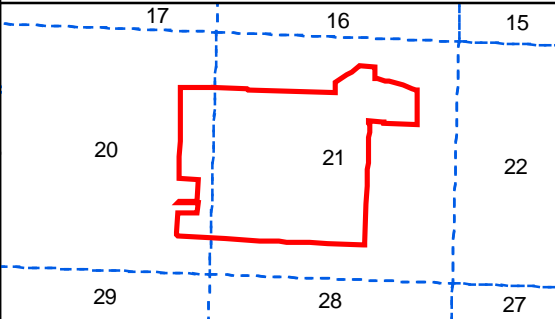
Legend

- Plots
- ▲ Culverts
- Streams
- ▨ Palustrine Open Water (POW)
- ▨ Wetland (PFO, PSS, PEM)
- ▨ Bioswale (POW)
- ▨ Ditch (POW)
- ▭ Study Area
- ▭ Watershed Boundary
- ▭ Tax Lots*

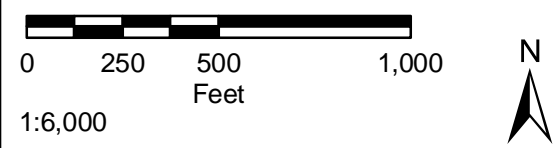
*Circled parcel numbers indicate accessed sites and field verified wetlands. Parcels 1 & 11 delineated (WD#08-0361), 20-24 delineated (WD#08-0257)

Information shown on this map is for planning purposes only and wetland information is subject to change. There may be unmapped wetlands subject to regulation and all wetland boundary mapping is approximate. In all cases, actual field conditions determine wetland boundaries. You are advised to contact the Oregon Department of State Lands and the U.S. Army Corps of Engineers with any regulatory questions;

GPS plot accuracy +/- 25 ft; line accuracy +/- 50 ft.

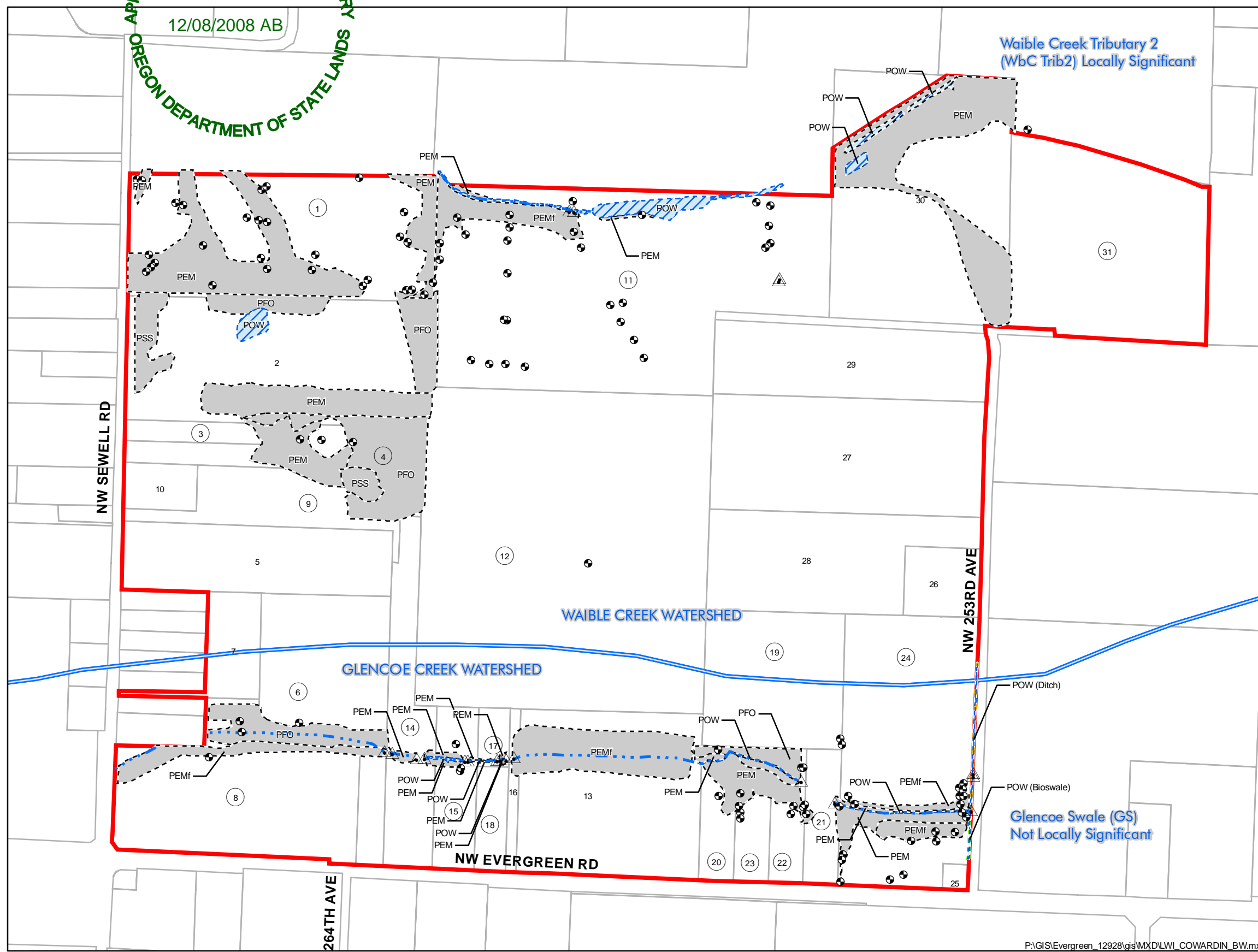


Township 1N Range 2W



SWCA Sept. 12, 2008
 ENVIRONMENTAL CONSULTANTS SWCA Project #12928

Figure 7. Cowardin Class



Waible Creek Tributary 2 (WbC Trib2) Locally Significant

WAIBLE CREEK WATERSHED

GLENCOE CREEK WATERSHED

Glencoe Swale (GS) Not Locally Significant