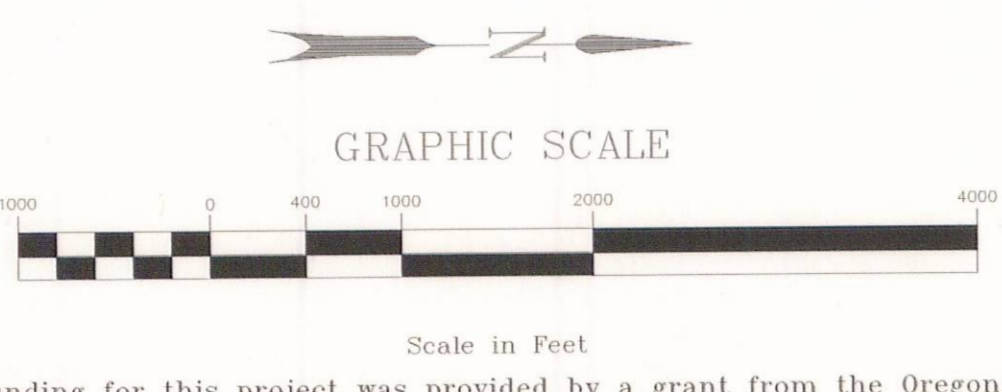




APPROVED WETLANDS INVENTORY
Oregon Department of State Lands

Meets LWZ standards
Date 4/05 Approved by J. Merlan

Watershed Boundary	—	Potentially Jurisdictional Wetland (not Field Verified)	
Project Boundary/UGB	- - -	Potentially Jurisdictional Wetland (Field Verified)	
Potentially Jurisdictional Creeks/drainages	—	Potentially Jurisdictional Other Waters	
Sample Point	●	Probable Wetland	
Wetland Code	TUP-1	PW	



Funding for this project was provided by a grant from the Oregon Division of State Lands, Wetlands Planning Assistance grant program. This grant program is supported by a grant from the U.S. Environmental Protection Agency under authority of the Clean Water Act.

THIS MAP IS FOR PLANNING PURPOSES ONLY
WETLAND BOUNDARIES ARE APPROXIMATE
AND SUBJECT TO CHANGE

This map has NOT been approved by the wetland regulatory agencies for permitting purposes. You are advised to contact the Oregon Division of State Lands and the U.S. Army Corps of Engineers with any regulatory questions. There may be additional wetlands within the study area that have not been identified. All wetlands, whether mapped or not, are subject to Federal and State permit requirements. There may also be areas of non-wetland within areas identified as wetlands on this map. In all cases, Federal and State agencies will use actual field conditions, rather than this map, to determine wetland boundaries.

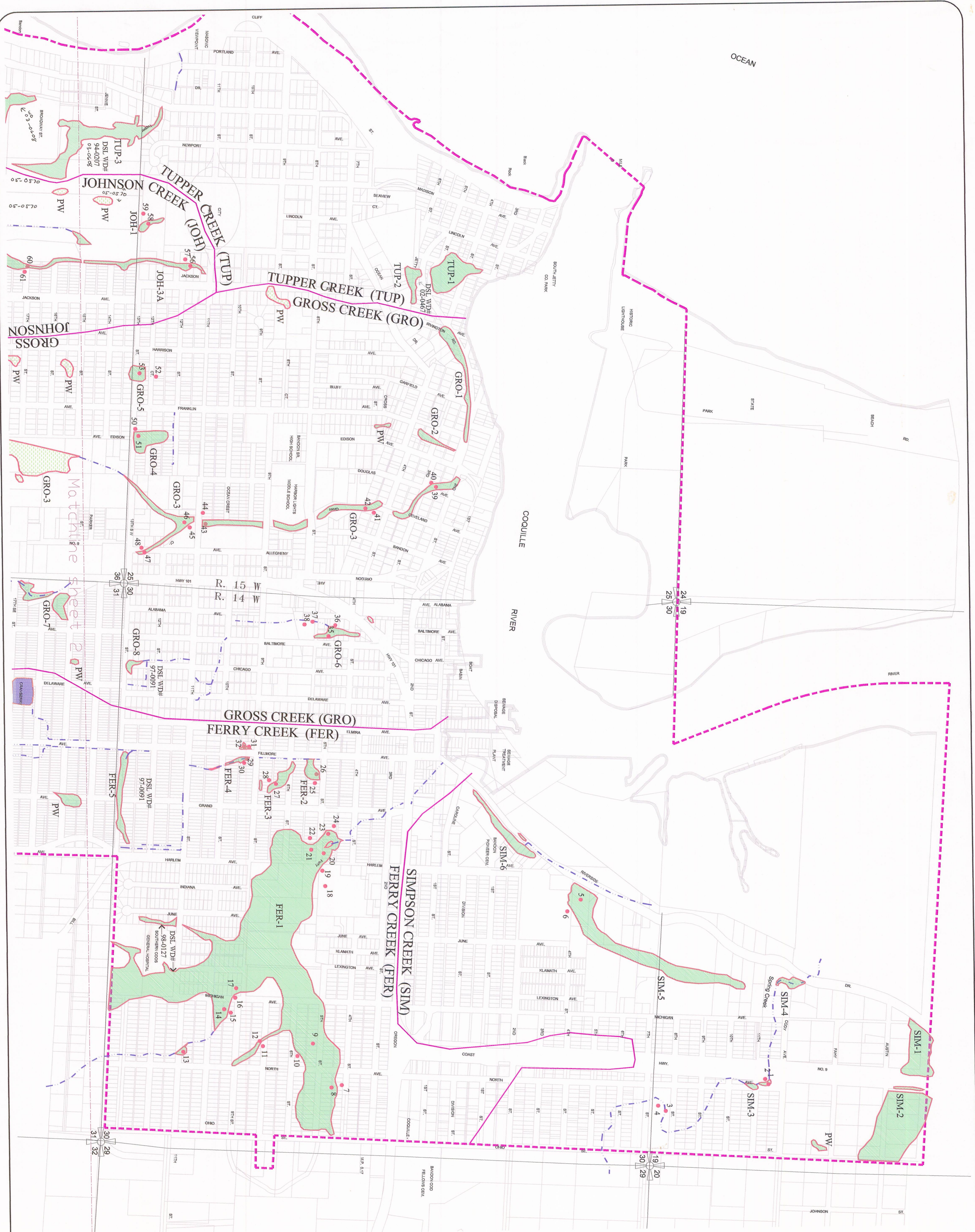
DATE: March, 2003
BASE MAP INFO: Supplied by City of Bandon
JOB NO.: 2395

Bandon

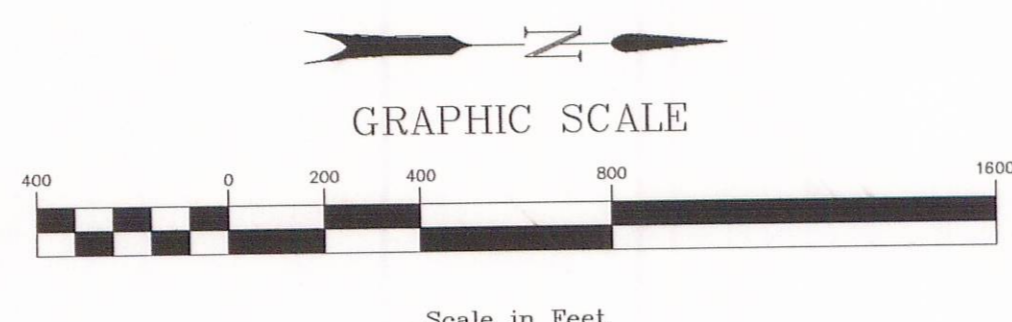
Local Wetlands Inventory

Pacific Habitat Services, Inc.
9450 SW Commerce Circle, Suite 180
Wilsonville, Oregon 97070
Phone: (503) 570-0800

Reference
Sheet:



Watershed Boundary	—	Potentially Jurisdictional Wetland (not Field Verified)	▨
Project Boundary/UGB	- - -	Potentially Jurisdictional Wetland (Field Verified)	▨
Potentially Jurisdictional Creeks/drainages	- - -	Potentially Jurisdictional Other Waters	▨
Sample Point	●	Probable Wetland	▨
Wetland Code	TUP-1	PW	▨



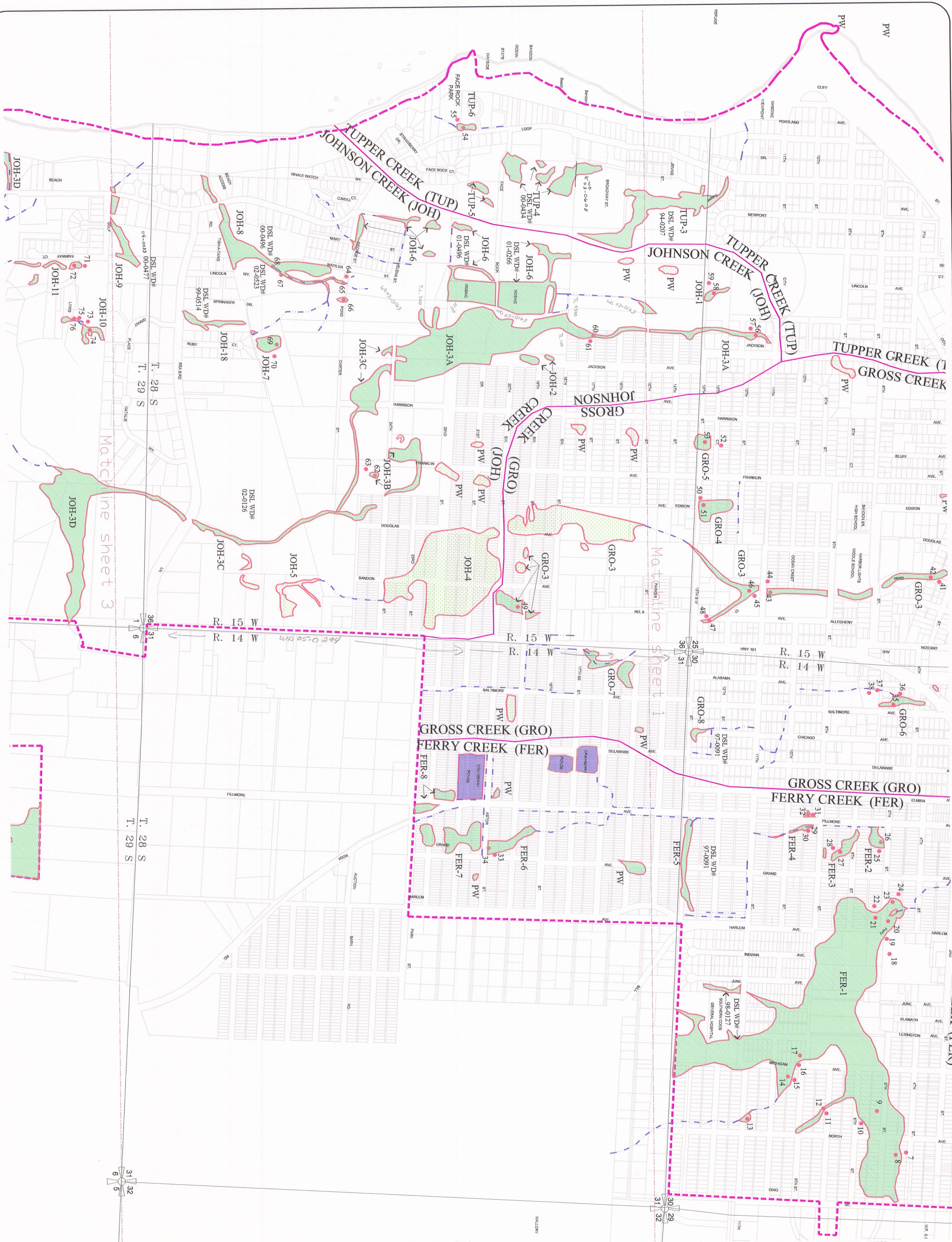
Funding for this project was provided by the Oregon Division of State Lands, Wetlands program. This grant program was supported by funding from the Oregon Watershed Enhancement Board.

THIS MAP IS FOR PLANNING PURPOSES ONLY
 WETLAND BOUNDARIES ARE APPROXIMATE
 AND SUBJECT TO CHANGE
 This map has NOT been approved by the wetland regulatory agencies for permitting purposes. You are advised to contact the Oregon Division of State Lands and the U.S. Army Corps of Engineers with any regulatory questions. There may be additional wetlands within the study area that have not been identified. All wetlands, whether mapped or not, may be subject to Federal and State permit requirements. There may also be areas of non-wetland within areas identified as wetlands on this map. In all cases, Federal and State agencies will use actual field conditions, rather than this map, to determine wetland boundaries.

DATE:	March, 2003
BASE MAP INFO:	Supplied by City of Bandon
JOB NO.:	2395

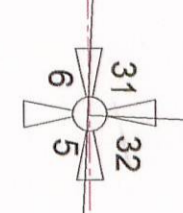
Bandon Local Wetlands Inventory

Pacific Habitat Services, Inc.
 9450 SW Commerce Circle, Suite 180
 Wilsonville, Oregon 97070
 Phone: (503) 570-0800



Matchline sheet 3

Matchline sheet 1



GRAPHIC SCALE
Scale in Feet

Watershed Boundary	Potentially Jurisdictional Wetland (not Field Verified)	PW
Project Boundary/UGB	Potentially Jurisdictional Wetland (Field Verified)	
Potentially Jurisdictional Creeks/drainages	Potentially Jurisdictional Other Waters	
Sample Point	Probable Wetland	
Wetland Code	TUP-1	

Funding for this project was provided by the Oregon Division of State Lands, Wetlands program. This grant program was supported by funding from the Oregon Watershed Enhancement Board.

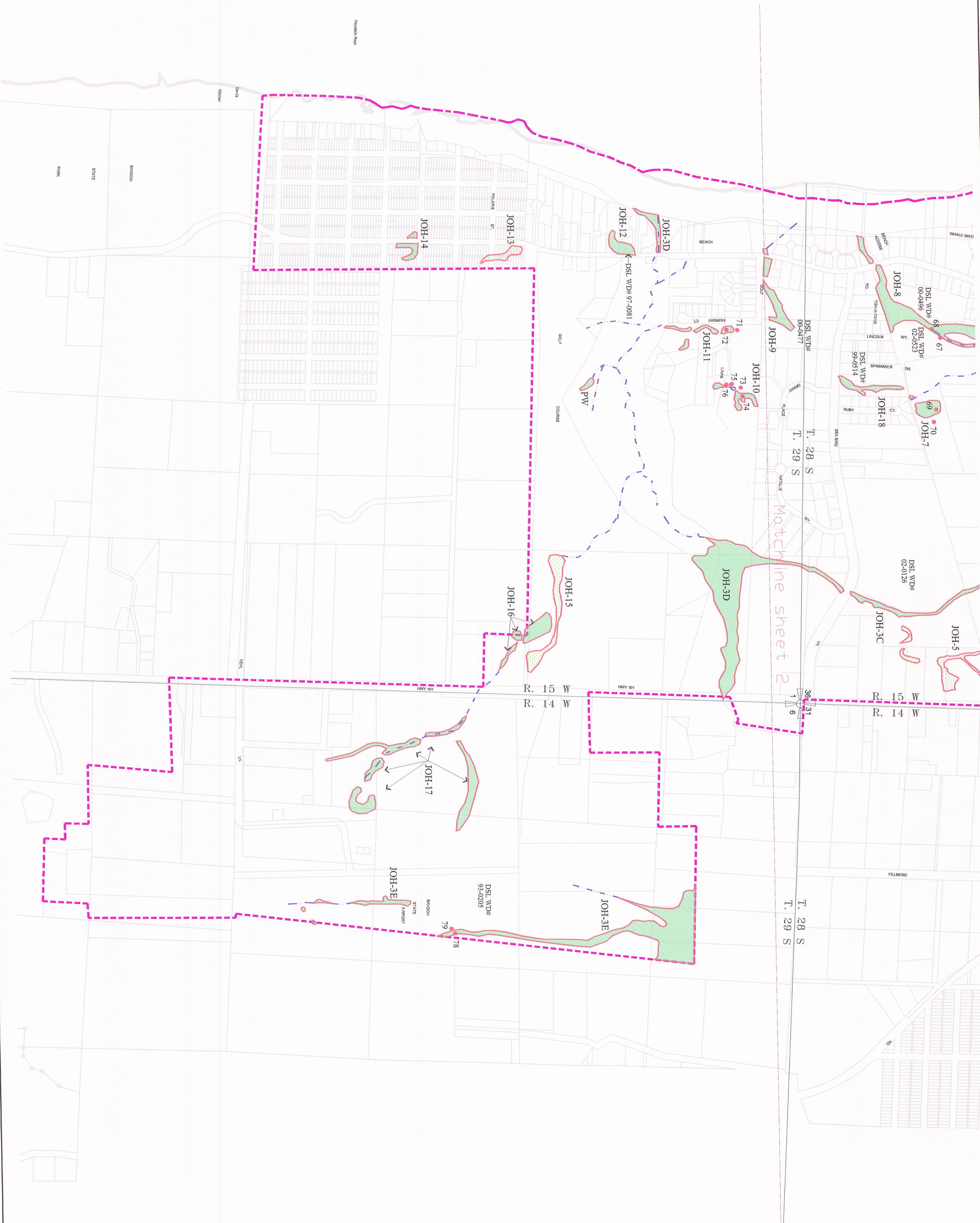
THIS MAP IS FOR PLANNING PURPOSES ONLY
WETLAND BOUNDARIES ARE APPROXIMATE
AND SUBJECT TO CHANGE
This map has NOT been approved by the wetland regulatory agencies for permitting purposes. You are advised to contact the Oregon Division of State Lands and the U.S. Army Corps of Engineers with any regulatory questions. There may be additional wetlands within the study area that have not been identified. All wetlands, whether mapped or not, may be subject to Federal and State permit requirements. There may also be areas of non-wetland within areas identified as wetlands on this map. In all cases, Federal and State agencies will use actual field conditions, rather than this map, to determine wetland boundaries.

DATE: March, 2003
BASE MAP INFO: Supplied by City of Bandon
JOB NO.: 2395

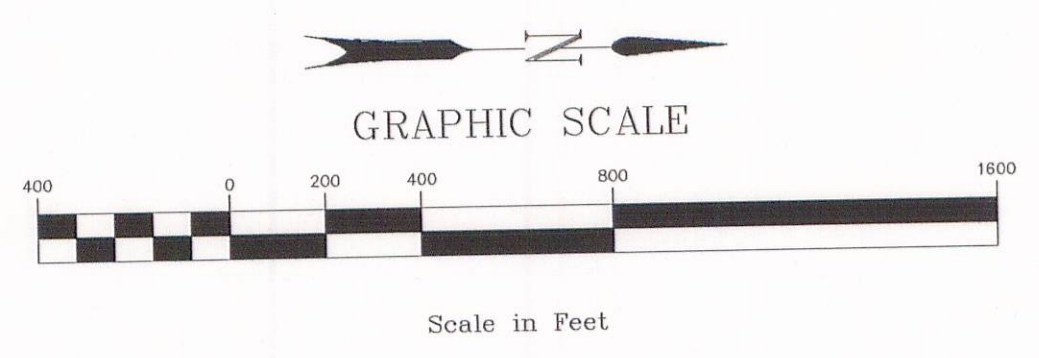
Bandon Local Wetlands Inventory

Pacific Habitat Services, Inc.
9450 SW Commerce Circle, Suite 180
Wilsonville, Oregon 97070
Phone: (503) 570-0800

Sheet: 2
of: 3



Watershed Boundary	—	Potentially Jurisdictional Wetland (not Field Verified)	■
Project Boundary/UGB	- - -	Potentially Jurisdictional Wetland (Field Verified)	■
Potentially Jurisdictional Creeks/drainages	- · - · -	Potentially Jurisdictional Other Waters	■
Sample Point	●	Probable Wetland	■
Wetland Code	TUP-1	PW	■



Funding for this project was provided by the Oregon Division of State Lands, Wetlands program. This grant program was supported by funding from the Oregon Watershed Enhancement Board.

THIS MAP IS FOR PLANNING PURPOSES ONLY
 WETLAND BOUNDARIES ARE APPROXIMATE
 AND SUBJECT TO CHANGE
 This map has NOT been approved by the wetland regulatory agencies for permitting purposes. You are advised to contact the Oregon Division of State Lands and the U.S. Army Corps of Engineers with any regulatory questions. There may be additional wetlands within the study area that have not been identified. All wetlands, whether mapped or not, may be subject to Federal and State permit requirements. There may also be areas of non-wetland within areas identified as wetlands on this map. In all cases, Federal and State agencies will use actual field conditions, rather than this map, to determine wetland boundaries.

DATE: March, 2003
 BASE MAP INFO: Supplied by City of Bandon
 JOB NO.: 2395

Bandon Local Wetlands Inventory

Pacific Habitat Services, Inc.
 9450 SW Commerce Circle, Suite 180
 Wilsonville, Oregon 97070
 Phone: (503) 570-0800