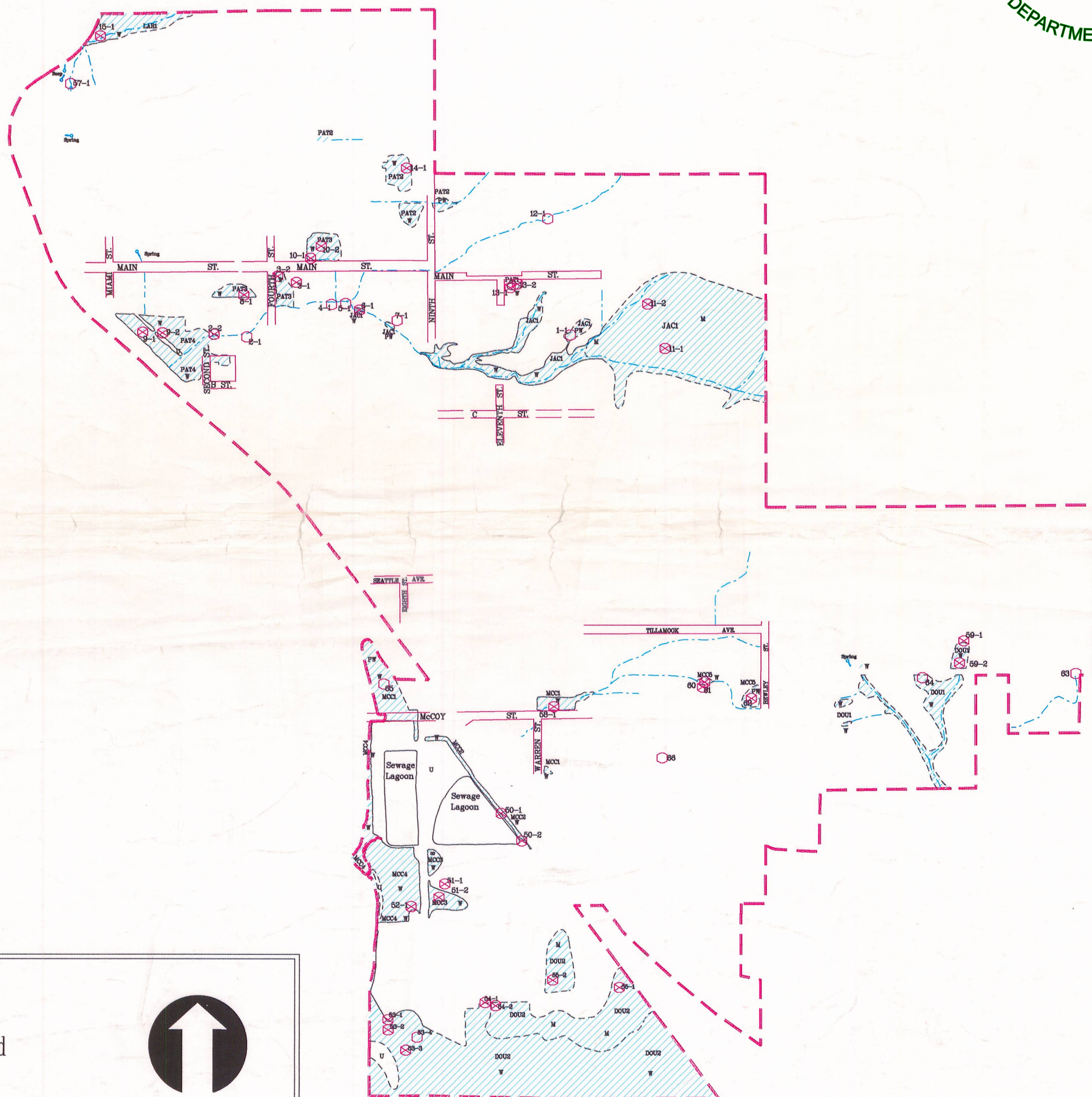


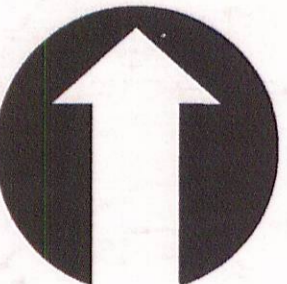
BAY CITY INDEX MAP

TILLAMOOK COUNTY
1" = 600'

APPROVED LOCAL WETLANDS INVENTORY
5/1/1997
OREGON DEPARTMENT OF STATE LANDS



W		Wetland
M		Mosaic
PW		Probable wetland
U		Upland
LAR1		Wetland ID code
	15-1	Sample point - obs.
	14-2	Sample point
		Wetland boundary - distinct
		Wetland boundary - not distinct
		Study area boundary
		Drainage way


North

Bay City Local Wetland Inventory

December 1996

BAY CITY

Inventory conducted by: Loverna Wilson, Environmental Consultant, Corvallis, OR; Phil Scoles, Scoles Associates, Portland, OR; and Laura Brophy, Green Point Consulting, Corvallis, OR.

Information on this map is for planning purposes; all wetland boundaries are approximate. There may be upland areas within mapped wetlands; there may also be unmapped wetlands subject to regulation. In all cases regulators will use actual field conditions, not this map, to determine jurisdictional wetland boundaries.

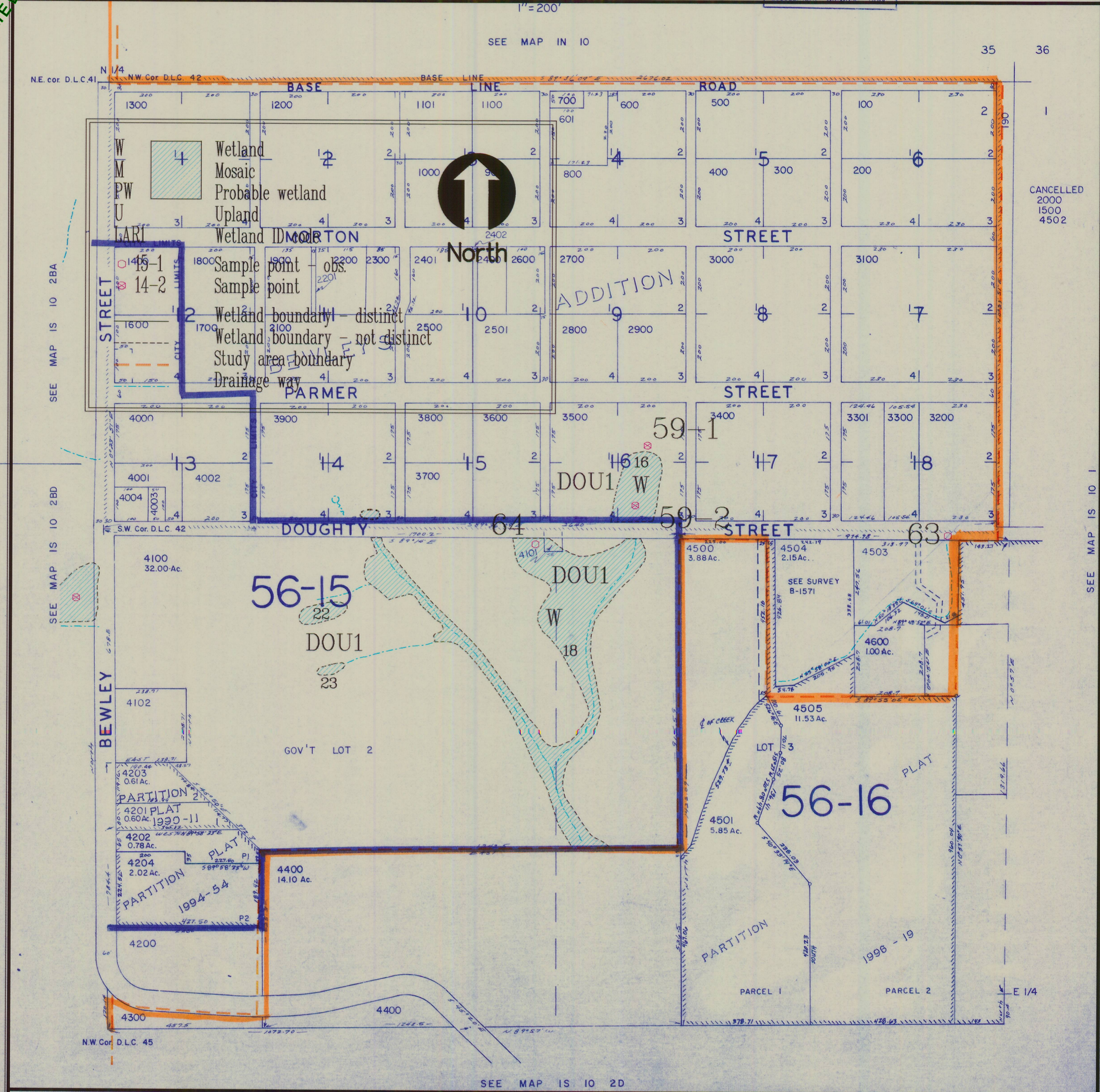
Funding and assistance provided by Oregon Division of State Lands, U.S. Environmental Protection Agency, and the City of Bay City.

Cartography by: C and G White Cartography, Inc.

NE 1/4 SEC. 2 T.1S R.10W W.M.
 TILLAMOOK COUNTY
 TILLAMOOK COUNTY
 1" = 200'

IS 10 2A

This map was prepared for
 assessment purposes only.



Bay City Local Wetland Inventory December 1996 IS 10 2A
 Inventory conducted by: Loverna Wilson, Environmental Consultant, Corvallis, OR; Phil Scoles, Scoles Associates, Portland, OR; and Laura Brophy, Green Point Consulting, Corvallis, OR.
 Information on this map is for planning purposes; all wetland boundaries are approximate. There may be upland areas within mapped wetlands; there may also be unmapped wetlands subject to regulation. In all cases regulators will use actual field conditions, not this map, to determine jurisdictional wetland boundaries.
 Funding and assistance provided by Oregon Division of State Lands, U.S. Environmental Protection Agency, and the City of Bay City. Cartography by: C and G White Cartography, Inc.

SW 1/4 NE 1/4 SEC.34 T.1N R.10W W.M.
TILLAMOOK COUNTY

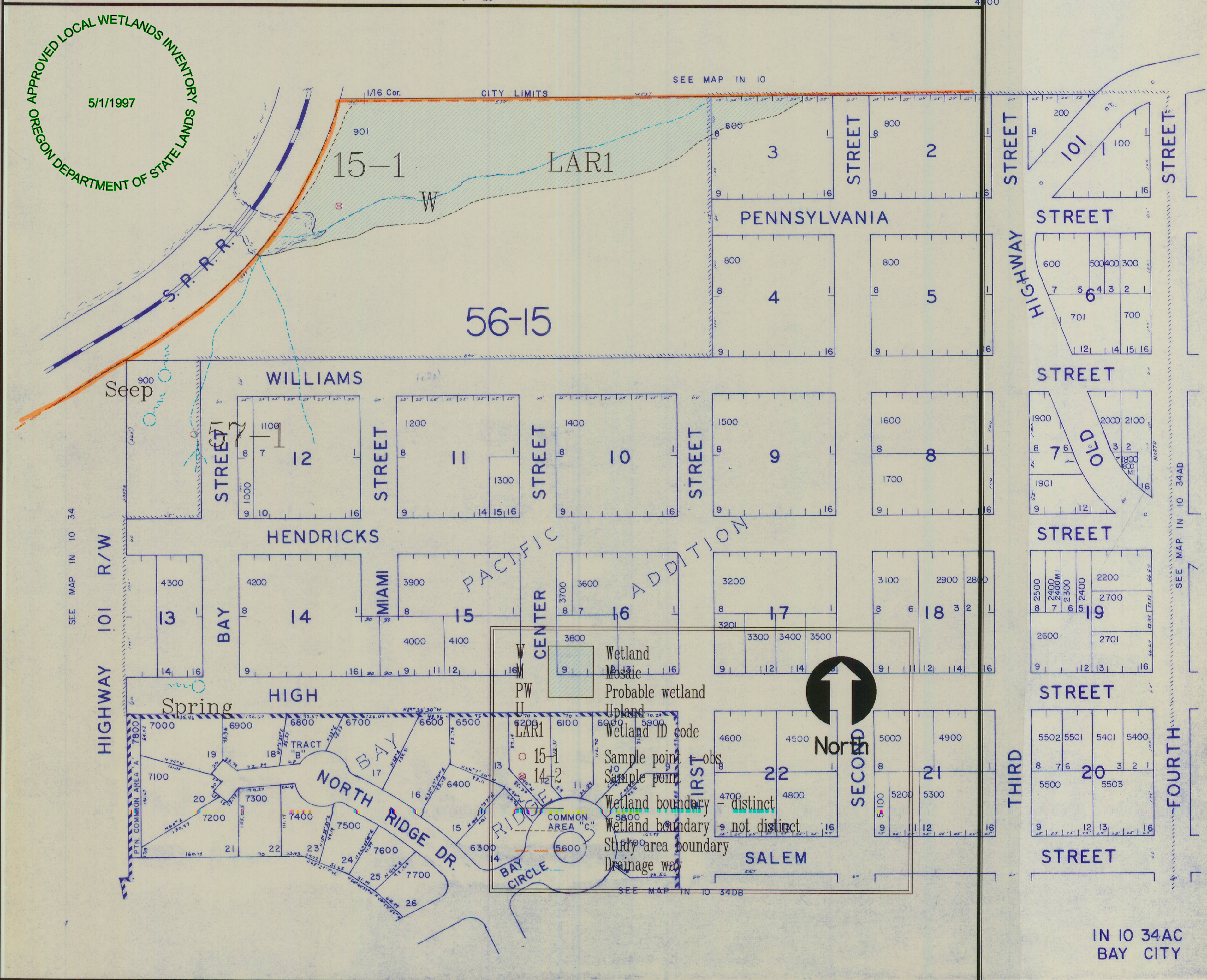
TILLAMOOK COUNTY
1" = 100'

This map was prepared for
assessment purpose only.

CANCELLED
3000
4800

APPROVED LOCAL WETLANDS INVENTORY
5/1/1997
OREGON DEPARTMENT OF STATE LANDS

SEE MAP IN 10



Bay City Local Wetland Inventory

December 1996

1N 10 34AC

Inventory conducted by: Loverna Wilson, Environmental Consultant, Corvallis, OR; Phil Scoles, Scoles Associates, Portland, OR; and Laura Brophy, Green Point Consulting, Corvallis, OR.

Information on this map is for planning purposes; all wetland boundaries are approximate. There may be upland areas within mapped wetlands; there may also be unmapped wetlands subject to regulation. In all cases regulators will use actual field conditions, not this map, to determine jurisdictional wetland boundaries.

Funding and assistance provided by Oregon Division of State Lands, U.S. Environmental Protection Agency, and the City of Bay City.

Cartography by: C and G White Cartography, Inc.

APPROVED LOCAL WETLANDS INVENTORY
 REGIONAL DEPARTMENT OF STATE LANDS
 5/1/1997

SE 1/4 NE 1/4 SEC. 34 T. 1N. R. 10 W. W.M.

IN 10 34 AD

TILLAMOOK COUNTY
 SE 1/4 NE 1/4 SEC. 34 T. 1N R. 10 W. W.M.

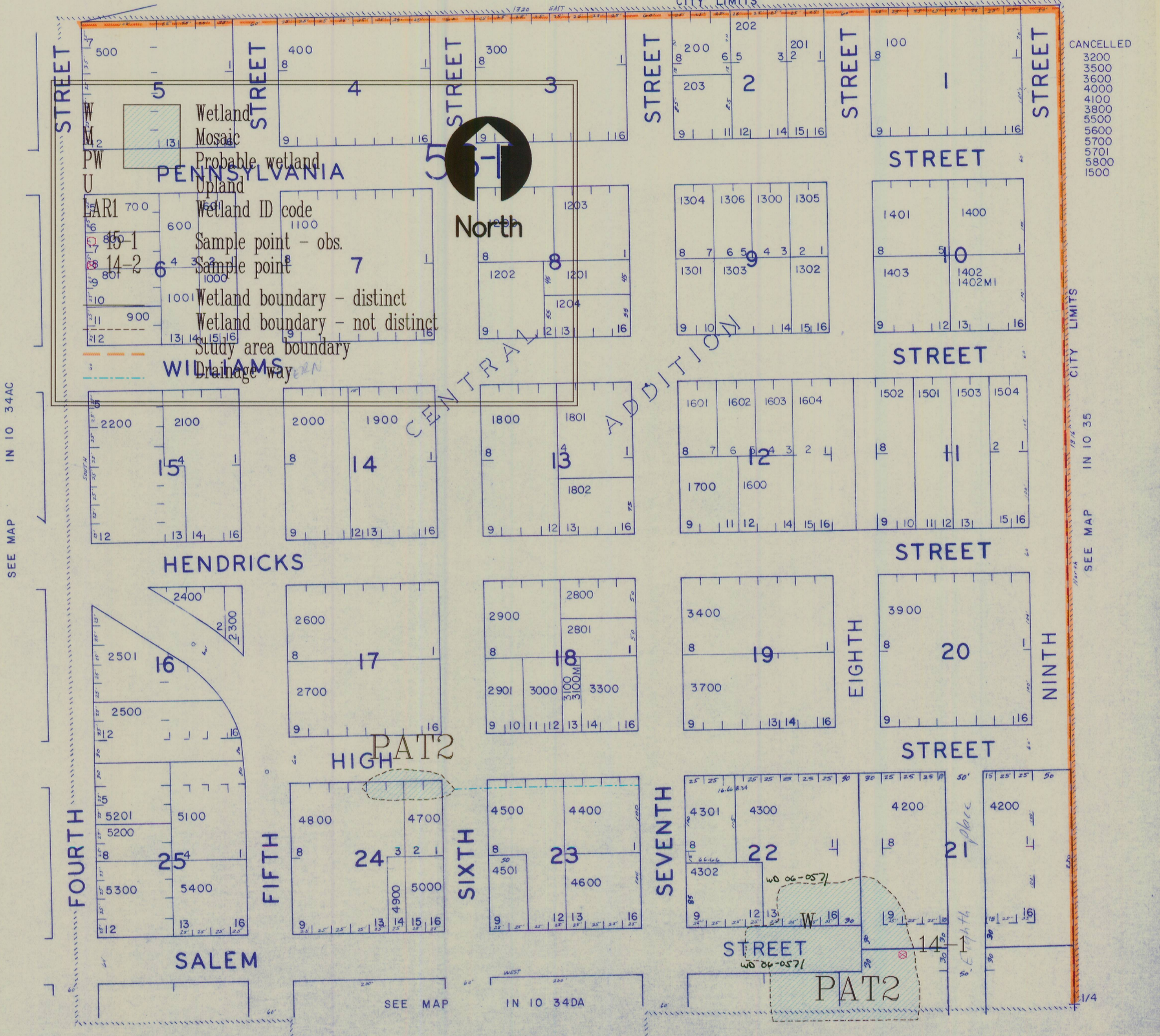
This map was prepared for assessment purposes only.

BAY CITY

TILLAMOOK COUNTY
 1" = 100'

SEE MAP IN 10

1/16 Cor.



- CANCELLED
- 3200
 - 3500
 - 3600
 - 4000
 - 4100
 - 3800
 - 5500
 - 5600
 - 5700
 - 5701
 - 5800
 - 1500

Bay City Local Wetland Inventory December 1996 IN 10 34AD

Inventory conducted by: Loverna Wilson, Environmental Consultant, Corvallis, OR; Phil Scoles, Scoles Associates, Portland, OR; and Laura Brophy, Green Point Consulting, Corvallis, OR.

Information on this map is for planning purposes; all wetland boundaries are approximate. There may be upland areas within mapped wetlands; there may also be unmapped wetlands subject to regulation. In all cases regulators will use actual field conditions, not this map, to determine jurisdictional wetland boundaries.

Funding and assistance provided by Oregon Division of State Lands, U.S. Environmental Protection Agency, and the City of Bay City. Cartography by: C and G White Cartography, Inc.

NE 1/4 SE 1/4 SEC.34 T.1N R.10W W.M.

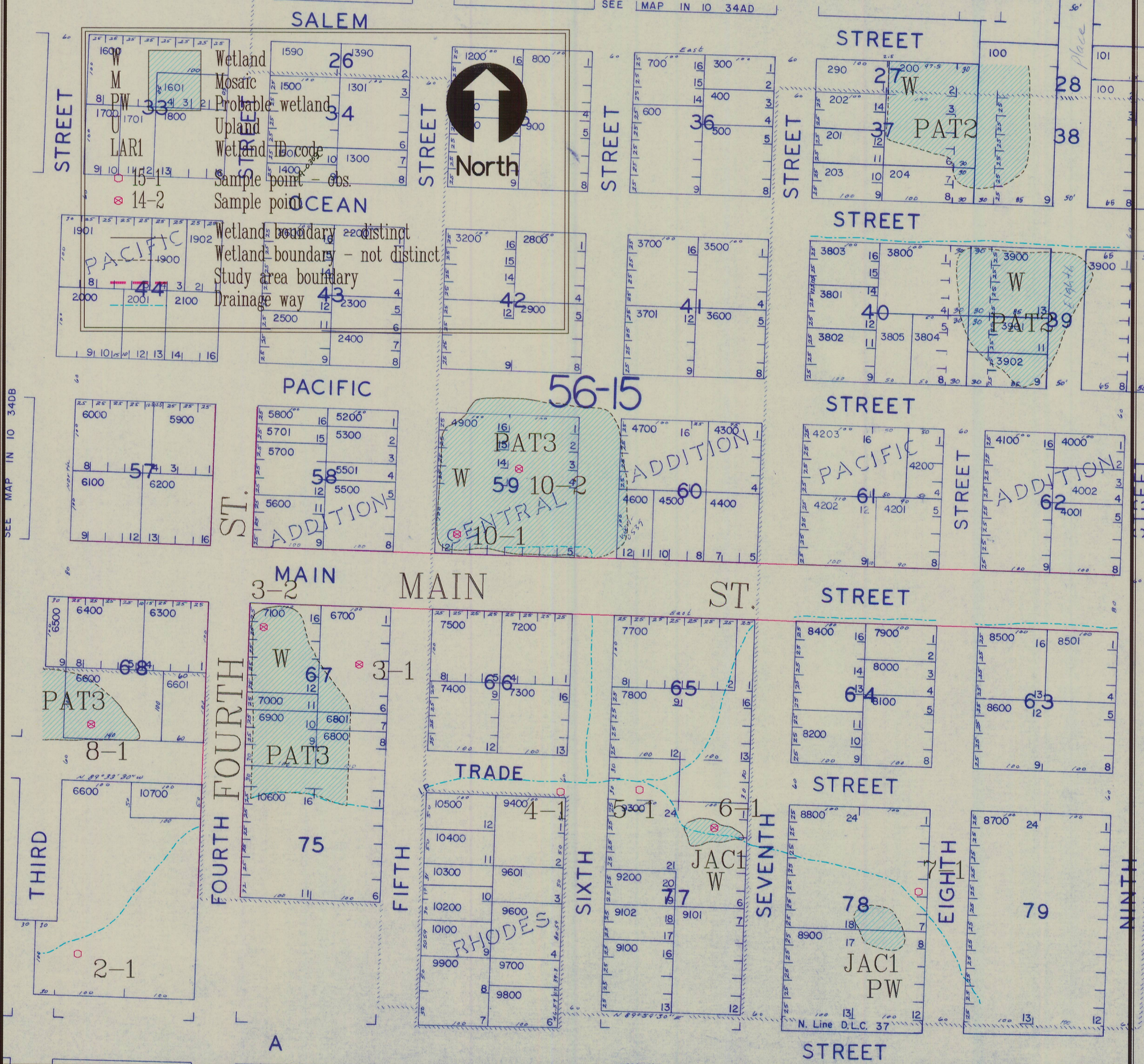
TILLAMOOK COUNTY

NE 1/4 SE 1/4 SEC. 34 T.1N. R.10 W. W.M.
TILLAMOOK COUNTY

1" = 100'

This map was prepared for assessment purpose only.

SEE MAP IN 10 34AD



Bay City Local Wetland Inventory

SEE MAP IN 10 34AD

December 1996

1N 10 34DA

Inventory conducted by: Loverna Wilson, Environmental Consultant, Corvallis, OR; Phil Scoles, Scoles Associates, Portland, OR; and Laura Brophy, Green Point Consulting, Corvallis, OR.

Information on this map is for planning purposes; all wetland boundaries are approximate. There may be upland areas within mapped wetlands; there may also be unmapped wetlands subject to regulation. In all cases regulators will use actual field conditions, not this map, to determine jurisdictional wetland boundaries.

Funding and assistance provided by Oregon Division of State Lands, U.S. Environmental Protection Agency, and the City of Bay City.

Cartography by: C and G White Cartography, Inc.

This map was prepared for assessment purpose only.

NW 1/4 SEC. 1/4 SE 1/4 SEC. 34 T.1N R.10W W.M. TILLAMOOK COUNTY

IN 10 34DB BAY CITY

1301	1301	6900	3500
7600	1301	1100	3802
5300	3500	1200	3900
5600	3400		
902	6000	1300	
6800	6100	1400	

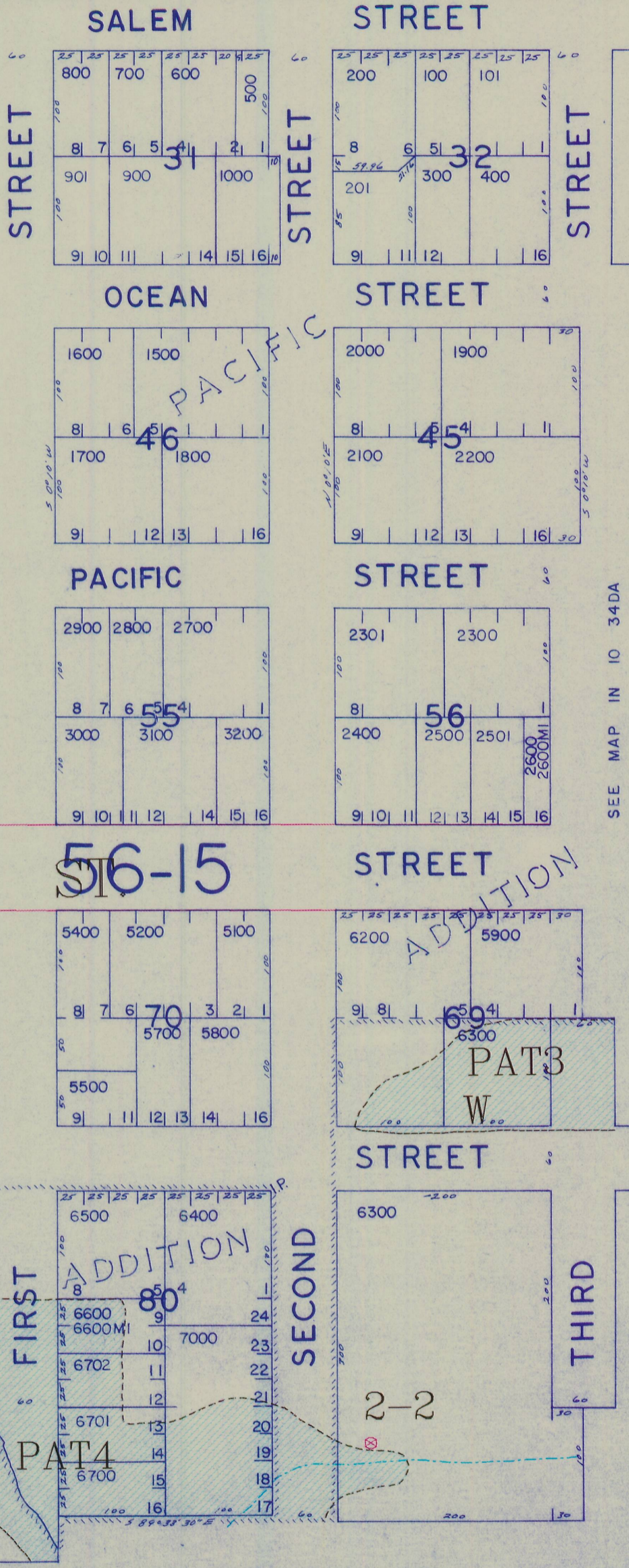
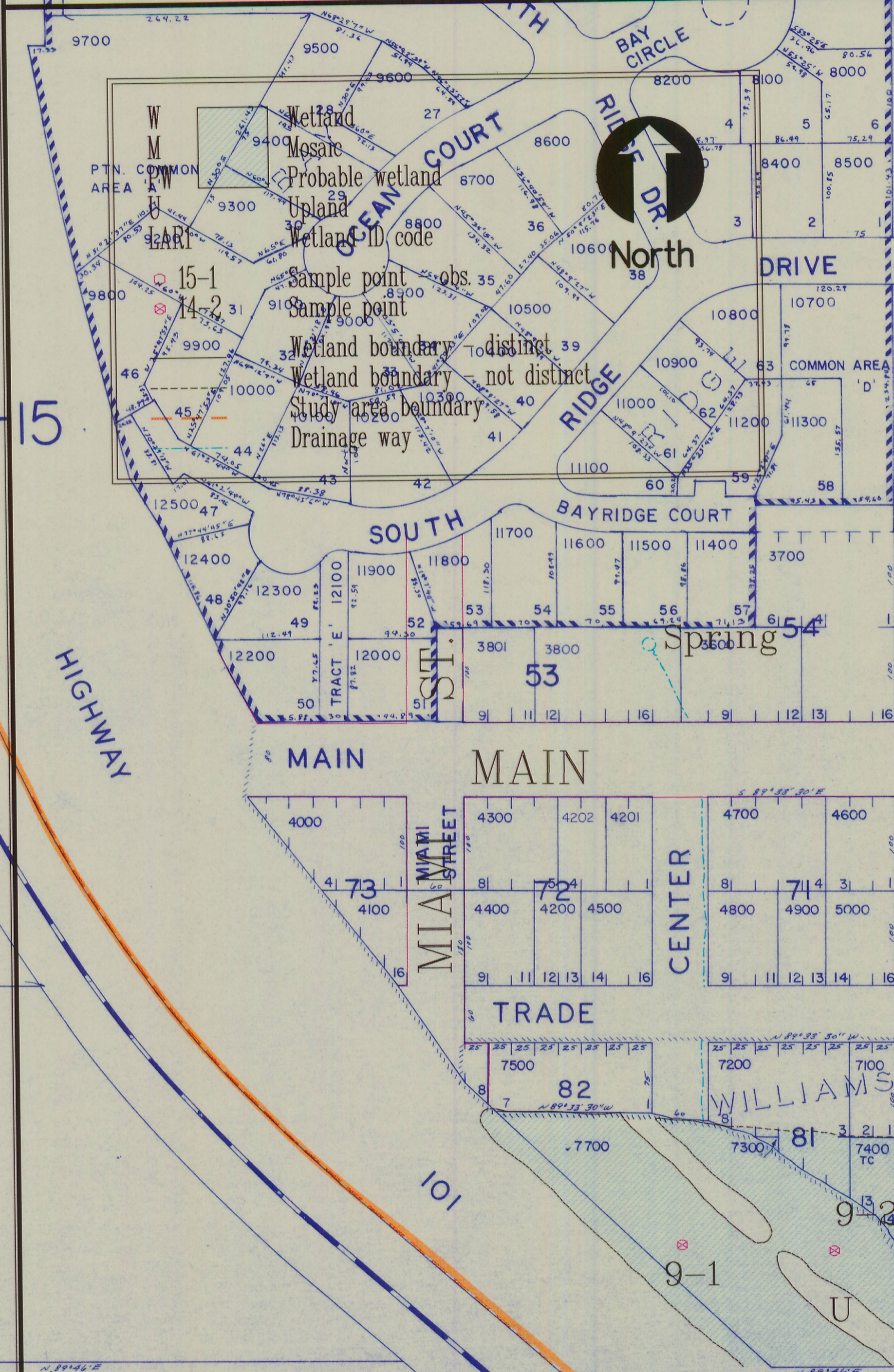
COAST

56-15

P.T.B.R.R.

TILLAMOOK

BAY



SEE MAP IN 10 34DC

IN 10 34DB

Bay City Local Wetland Inventory

December 1996

IN 10 34DB

Inventory conducted by: Loverna Wilson, Environmental Consultant, Corvallis, OR; Phil Scoles, Scoles Associates, Portland, OR; and Laura Brophy, Green Point Consulting, Corvallis, OR.

Information on this map is for planning purposes, all wetland boundaries are approximate. There may be upland areas within mapped wetlands; there may also be unmapped wetlands subject to regulation. In all cases regulators will use actual field conditions, not this map, to determine jurisdictional wetland boundaries.

Funding and assistance provided by Oregon Division of State Lands, U.S. Environmental Protection Agency, and the City of Bay City.

Cartography by: C and G White Cartography, Inc.

APPROVED LOCAL WETLANDS INVENTORY
 OREGON DEPARTMENT OF STATE LANDS

5/11/1997

SW 1/4 SE 1/4 SEC.34 T.1N R.10W W.M.

TILLAMOOK COUNTY
 1" = 100'

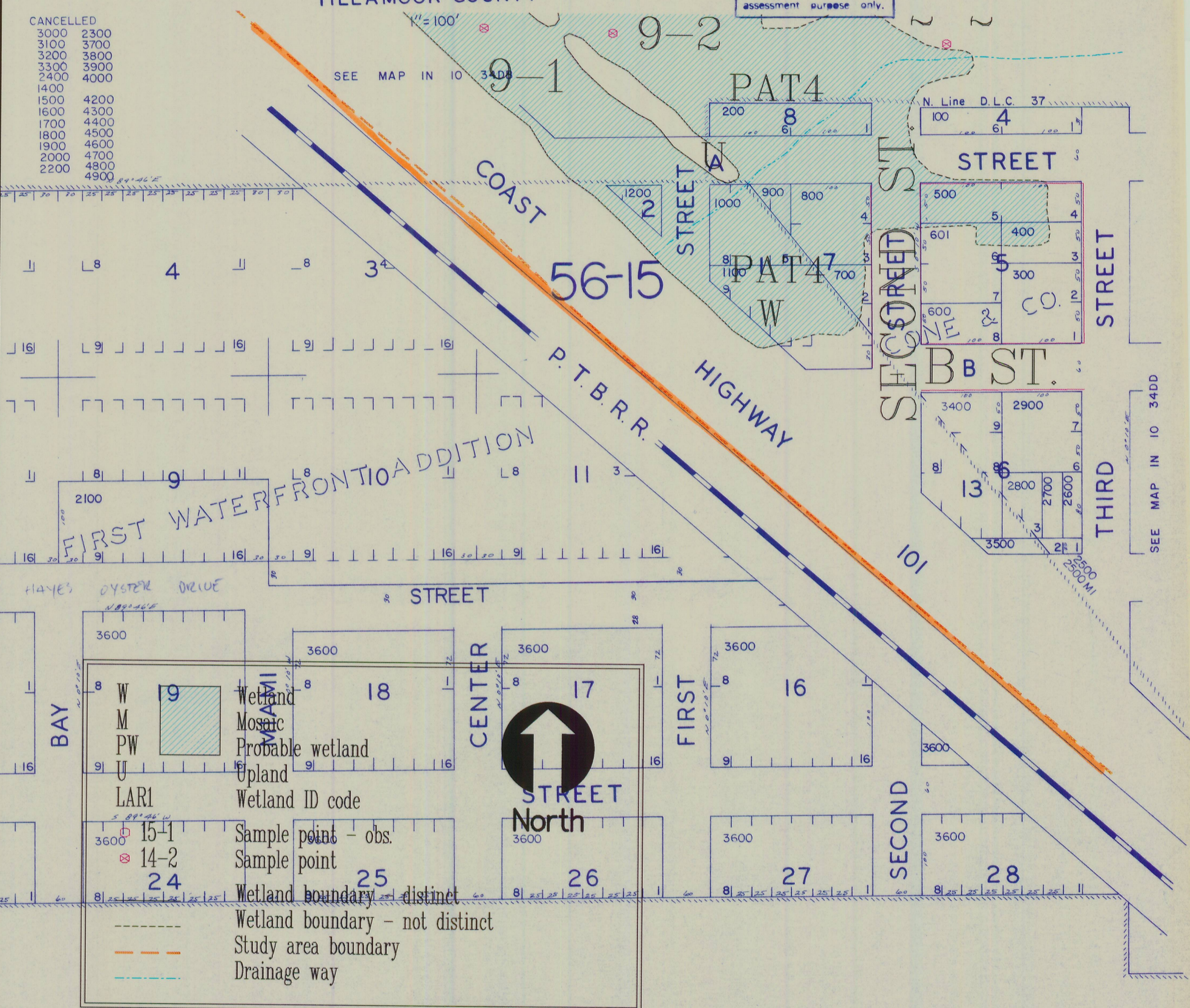
SW 1/4 SE 1/4 SEC.34 T.1N. R.10W. W.M.
 TILLAMOOK COUNTY

IN 10 34DC
 BAY CITY

This map was prepared for
 assessment purpose only.

CANCELLED

3000	2300
3100	3700
3200	3800
3300	3900
2400	4000
1400	
1500	4200
1600	4300
1700	4400
1800	4500
1900	4600
2000	4700
2200	4800
	4900



Bay City Local Wetland Inventory

December 1996

IN 10 34DC

Inventory conducted by: Loverna Wilson, Environmental Consultant, Corvallis, OR; Phil Scoles, Scoles Associates, Portland, OR; and Laura Brophy, Green Point Consulting, Corvallis, OR.

Information on this map is for planning purposes; all wetland boundaries are approximate. There may be upland areas within mapped wetlands; there may also be unmapped wetlands subject to regulation. In all cases regulators will use actual field conditions, not this map, to determine jurisdictional wetland boundaries.

Funding and assistance provided by Oregon Division of State Lands, U.S. Environmental Protection Agency, and the City of Bay City.

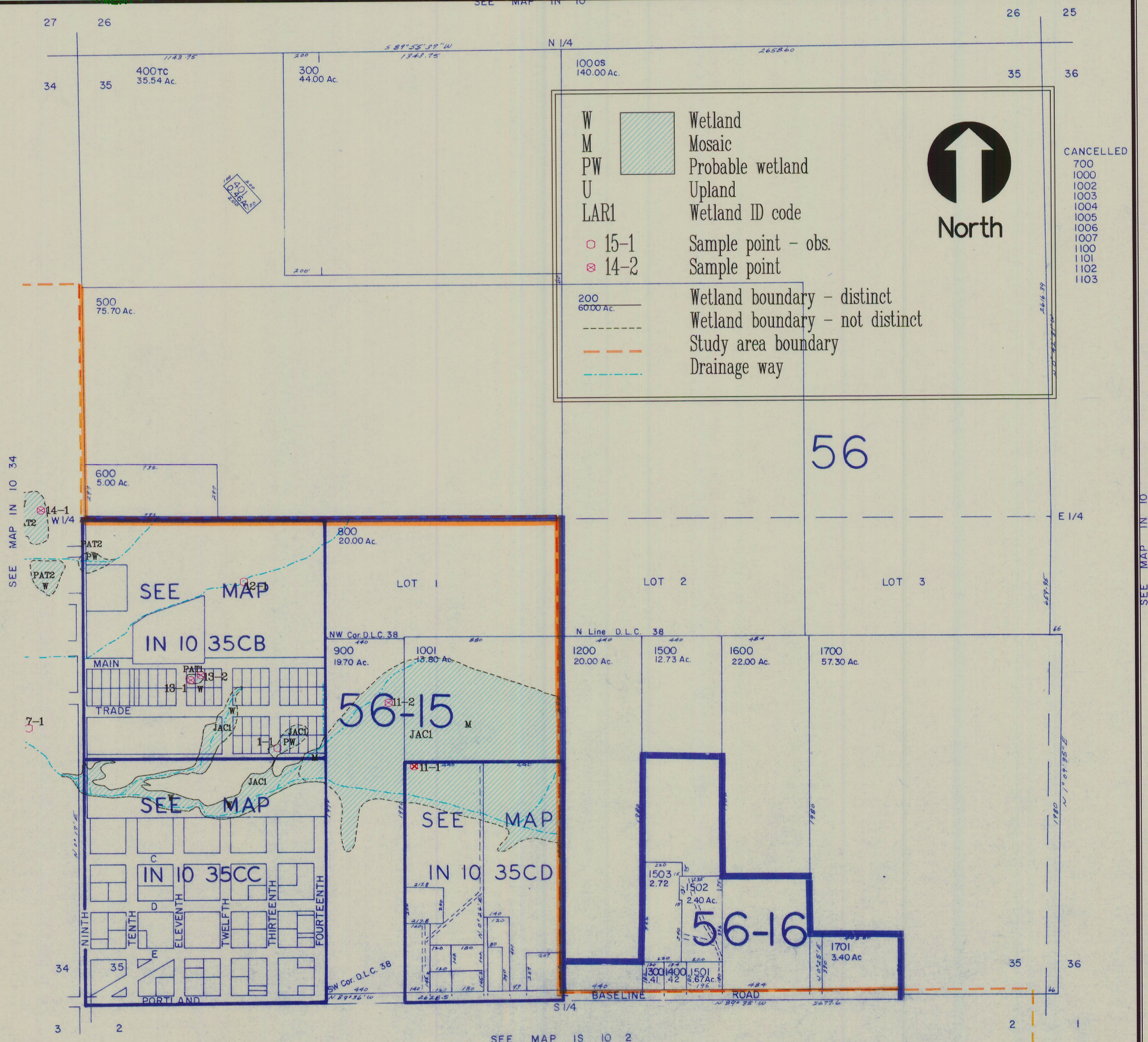
Cartography by: C and G White Cartography, Inc.

SECTION 35 T.1N. R.10W. W.M.

This map was prepared for
 assessment purpose only.

TILLAMOOK COUNTY
 1" = 400'

SEE MAP IN 10



CANCELLED
 700
 1000
 1002
 1003
 1004
 1005
 1006
 1007
 1100
 1101
 1102
 1103

SEE MAP IN 10 34

SEE MAP IN 10

APPROVED LOCAL WETLANDS INVENTORY
 5/1/1997
 OREGON DEPARTMENT OF STATE LANDS

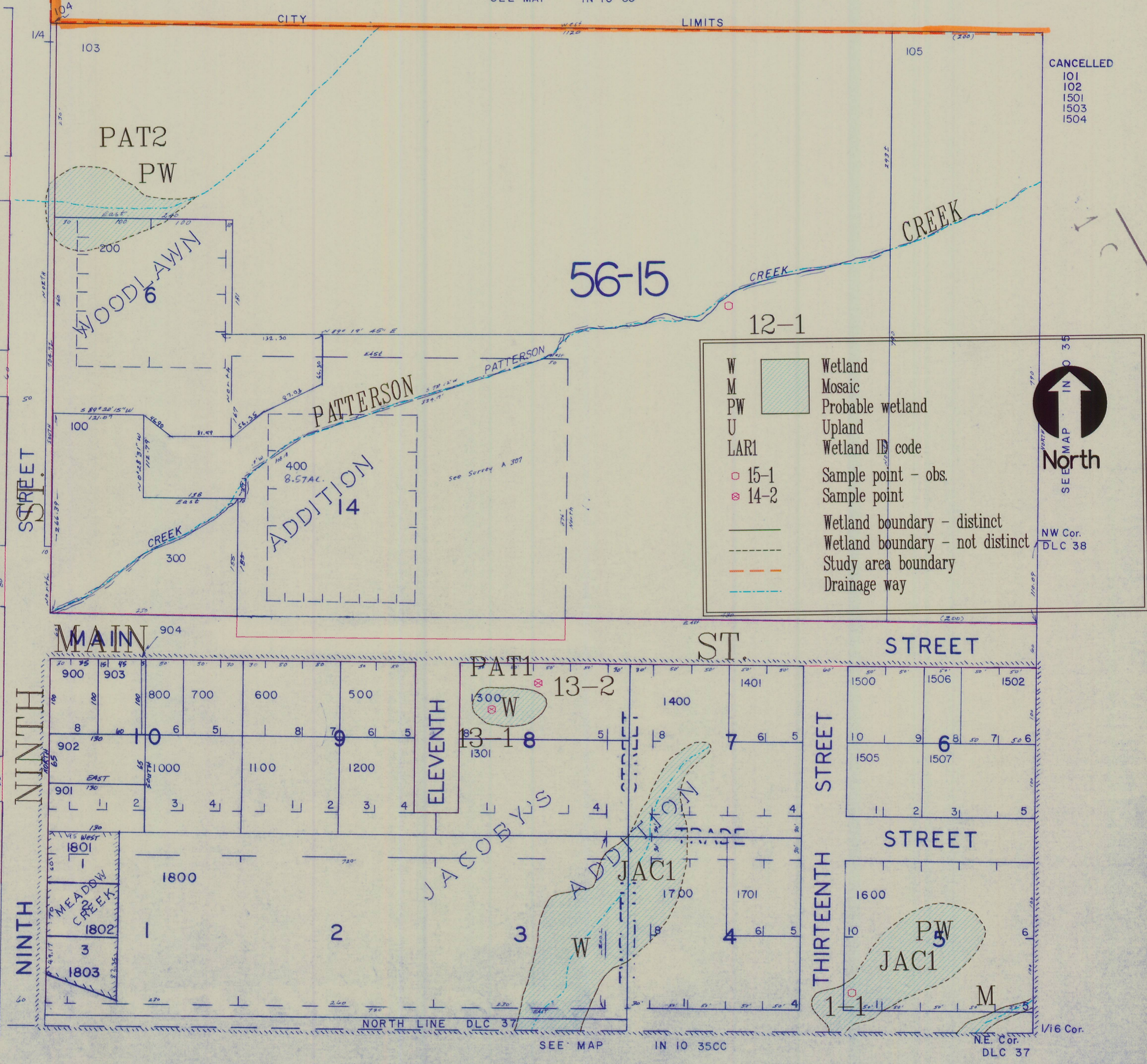
NW 1/4 SW 1/4 SEC. 35 T.1N R.10W W.M.
 TILLAMOOK COUNTY

IN 10 35CB
 BAY CITY

This map was prepared for assessment purposes only.

1" = 100'
 TILLAMOOK COUNTY
 1" = 100'

SEE MAP IN 10 35



CANCELLED
 101
 102
 1501
 1503
 1504



NW Cor. DLC 38

IN 10 35CB

Bay City Local Wetland Inventory

December 1996

1N 10 35CB

Inventory conducted by: Loverna Wilson, Environmental Consultant, Corvallis, OR; Phil Scoles, Scoles Associates, Portland, OR; and Laura Brophy, Green Point Consulting, Corvallis, OR.

Information on this map is for planning purposes; all wetland boundaries are approximate. There may be upland areas within mapped wetlands; there may also be unmapped wetlands subject to regulation. In all cases regulators will use actual field conditions, not this map, to determine jurisdictional wetland boundaries.

Funding and assistance provided by Oregon Division of State Lands, U.S. Environmental Protection Agency, and the City of Bay City.

Cartography by: C and G White Cartography, Inc.

APPROVED LOCAL WETLANDS INVENTORY
 OREGON DEPARTMENT OF STATE LANDS

5/1/1997

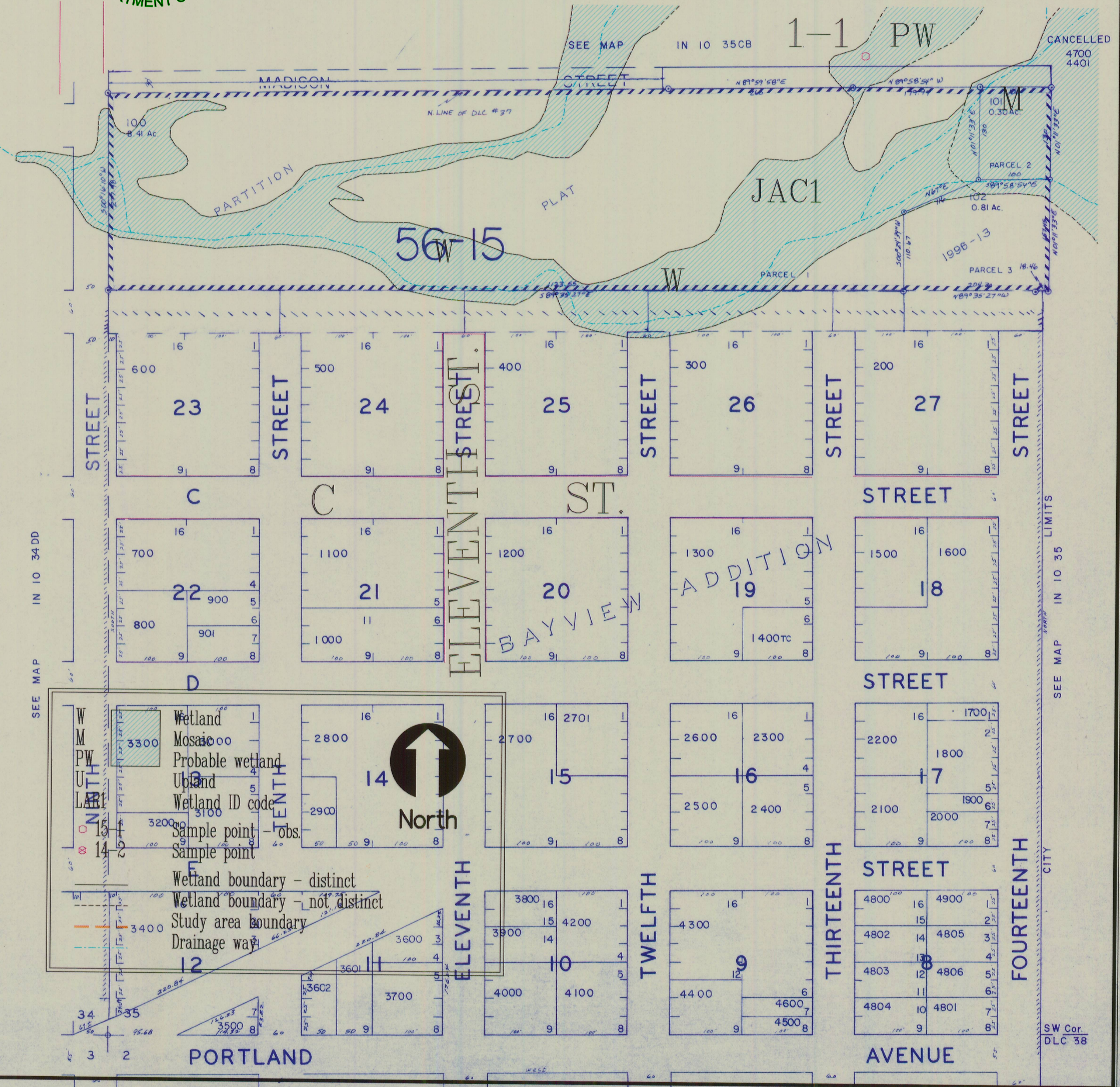
SW 1/4 SW 1/4 SEC. 35 T.1N R.10W W.M.

TILLAMOOK COUNTY
 SW 1/4 SW 1/4 SEC. 35 T.1N R.10W W.M.
 TILLAMOOK COUNTY

IN 10 35 CC
 BAY CITY

This map was prepared for
 assessment purpose only.

1" = 100'



Bay City Local Wetland Inventory

December 1996

IN 10 35CC

Inventory conducted by: Loverna Wilson, Environmental Consultant, Corvallis, OR; Phil Scoles, Scoles Associates, Portland, OR; and Laura Brophy, Green Point Consulting, Corvallis, OR.

Information on this map is for planning purposes; all wetland boundaries are approximate. There may be upland areas within mapped wetlands; there may also be unmapped wetlands subject to regulation. In all cases regulators will use actual field conditions, not this map, to determine jurisdictional wetland boundaries.

Funding and assistance provided by Oregon Division of State Lands, U.S. Environmental Protection Agency, and the City of Bay City.

Cartography by: C and G White Cartography, Inc.

SE 1/4 SW 1/4 SEC. 35 T.1N R.10W W.M.

TILLAMOOK COUNTY

SE 1/4 SW 1/4 SEC. 35 T.1N R.10W W.M.

IN 10 35CD

TILLAMOOK COUNTY

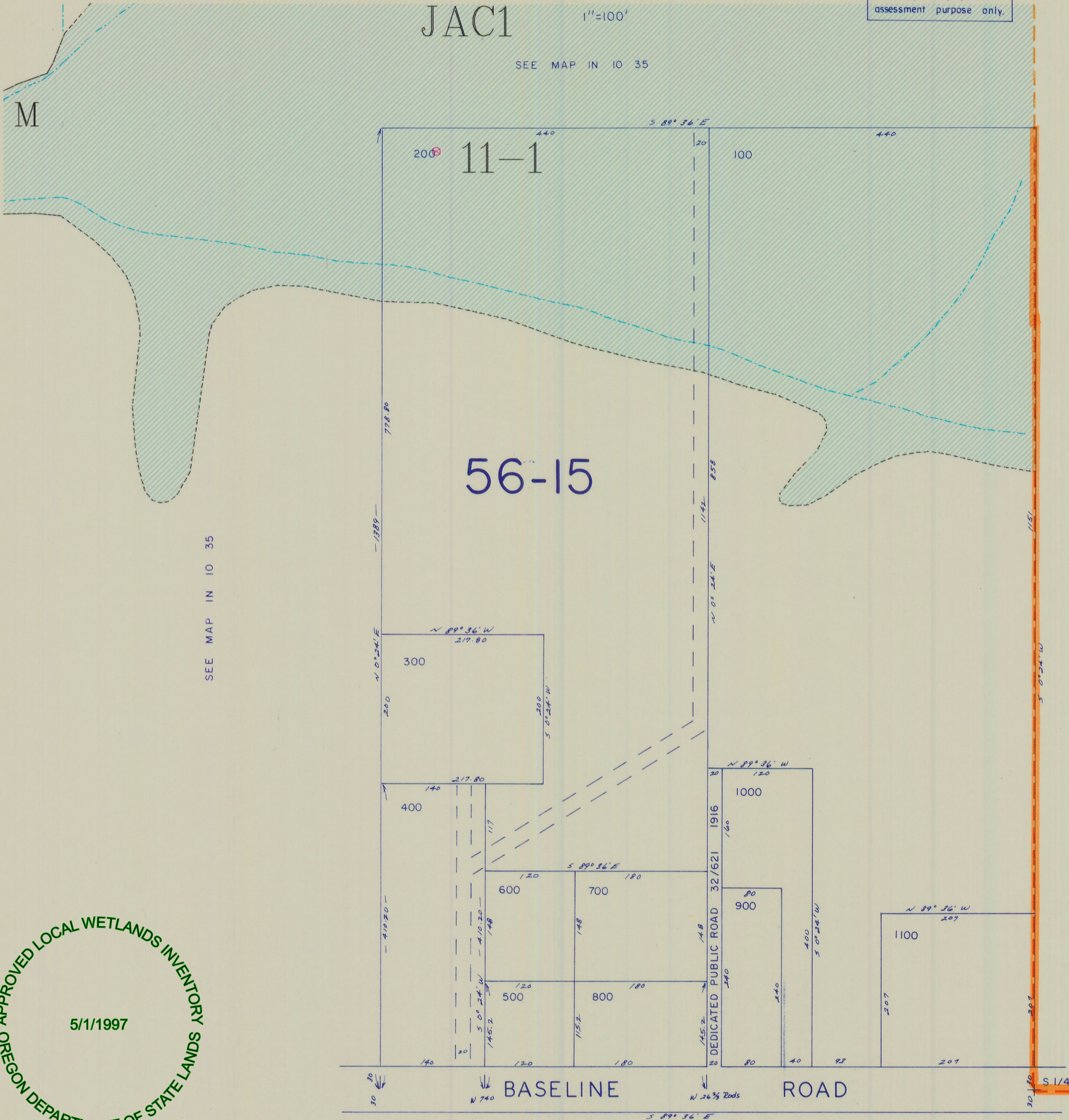
BAY CITY

JAC1

1"=100'

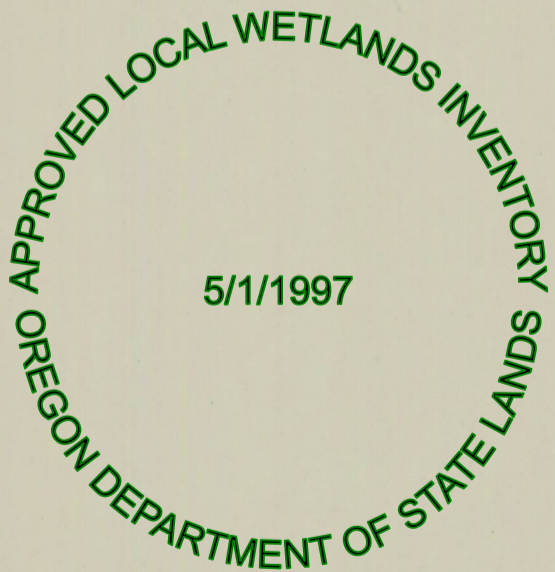
This map was prepared for assessment purpose only.

SEE MAP IN 10 35



SEE MAP IN 10 35

SEE MAP IN 10 35



Bay City Local Wetland Inventory

December 1996

1N 10 35CD

IN 10 35CD

Inventory conducted by: Loverna Wilson, Environmental Consultant, Corvallis, OR; Phil Scoles, Scoles Associates, Portland, OR; and Laura Brophy, Green Point Consulting, Corvallis, OR.

Information on this map is for planning purposes; all wetland boundaries are approximate. There may be upland areas within mapped wetlands; there may also be unmapped wetlands subject to regulation. In all cases regulators will use actual field conditions, not this map, to determine jurisdictional wetland boundaries.

Funding and assistance provided by Oregon Division of State Lands, U.S. Environmental Protection Agency, and the City of Bay City.

Cartography by: C and G White Cartography, Inc.

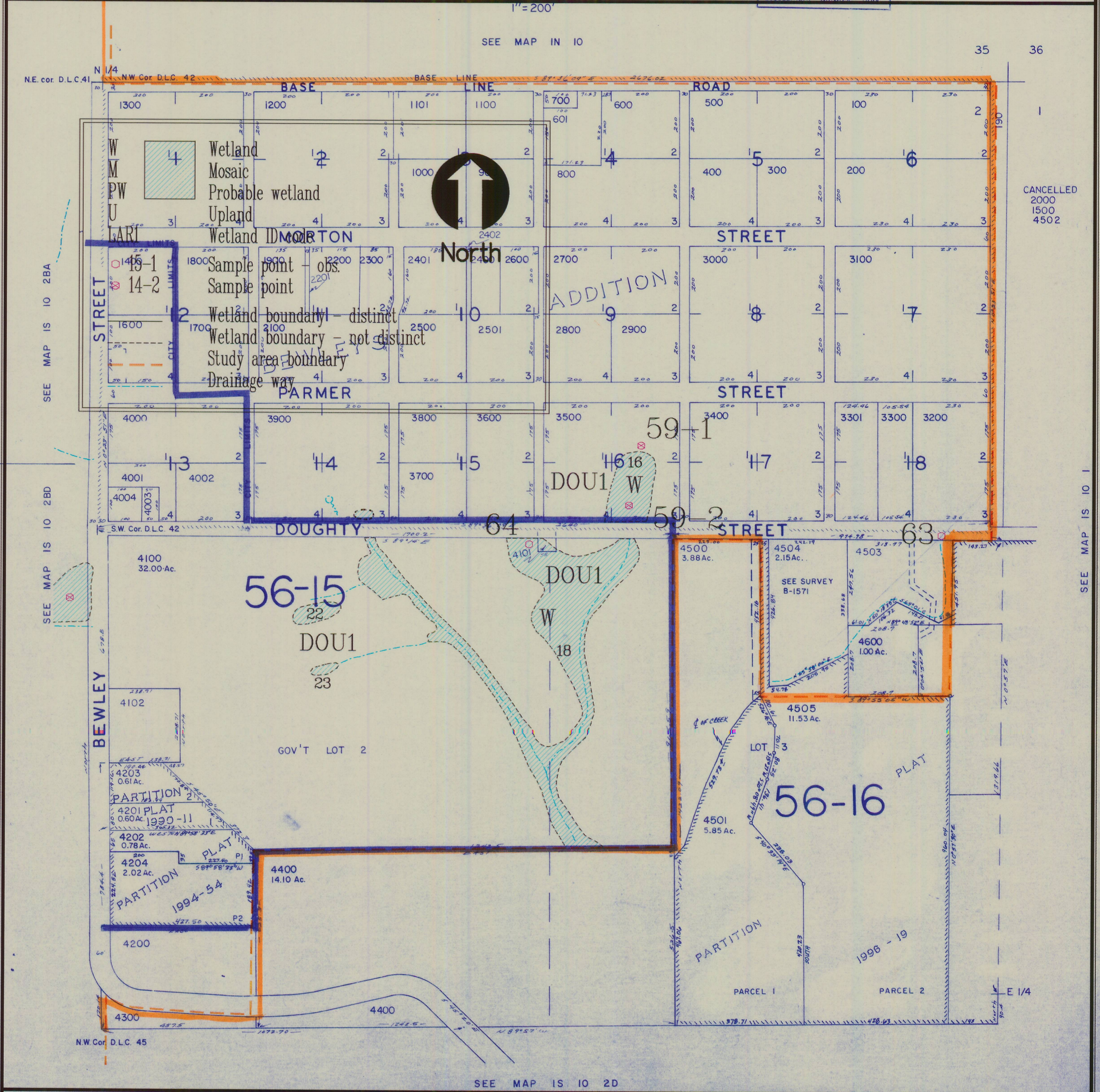
NE 1/4 SEC. 2 T.1S R.10W W.M.

NE 1/4 SEC. 2 T.1S R.10W W.M.
 TILLAMOOK COUNTY
 TILLAMOOK COUNTY
 1" = 200'

IS 10 2A

This map was prepared for
 assessment purposes only.

SEE MAP IN 10



SEE MAP IS 10 2BA

SEE MAP IS 10 2BD

SEE MAP IS 10 1

CANCELLED
 2000
 1500
 4502

SEE MAP IS 10 2D

IS 10 2A

Bay City Local Wetland Inventory December 1996 IS 10 2A

Inventory conducted by: Loverna Wilson, Environmental Consultant, Corvallis, OR; Phil Scoles, Scoles Associates, Portland, OR; and Laura Brophy, Green Point Consulting, Corvallis, OR.

Information on this map is for planning purposes; all wetland boundaries are approximate. There may be upland areas within mapped wetlands; there may also be unmapped wetlands subject to regulation. In all cases regulators will use actual field conditions, not this map, to determine jurisdictional wetland boundaries.

Funding and assistance provided by Oregon Division of State Lands, U.S. Environmental Protection Agency, and the City of Bay City. Cartography by: C and G White Cartography, Inc.

SW 1/4 NW 1/4 SEC. 2 T.1S R.10W W.M.

TILLAMOOK COUNTY
SW 1/4 NW 1/4 SEC. 2 T.1S. R.10W. W.M.

TILLAMOOK COUNTY

1"=100'

This map was prepared for assessment purpose only.

IS 10 2BC
BAY CITY

APPROVED LOCAL WETLANDS INVENTORY
5/1/1997
OREGON DEPARTMENT OF STATE LANDS

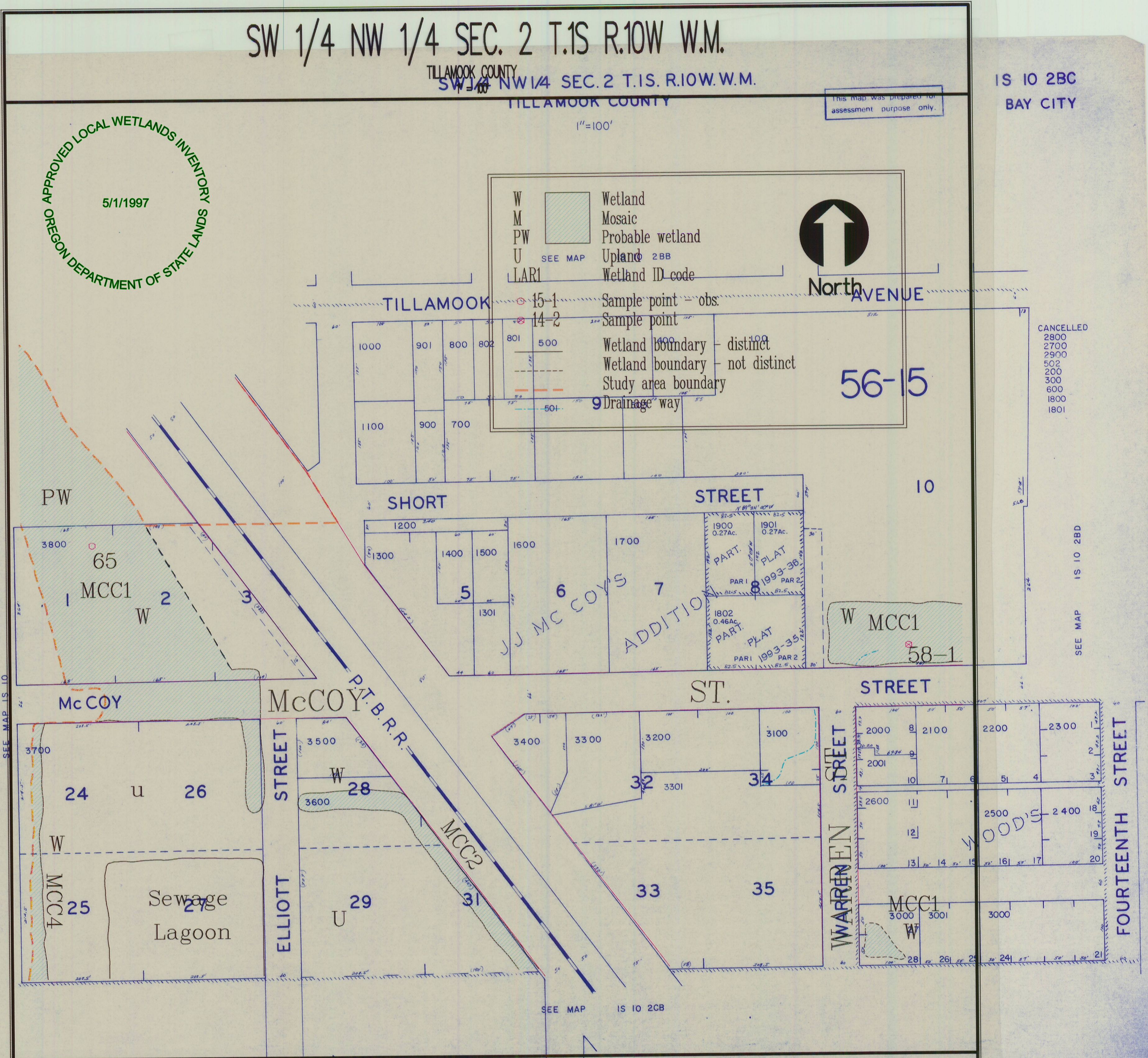
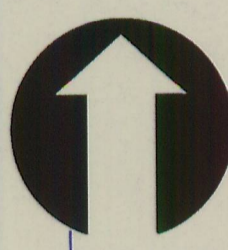
W	Wetland
M	Mosaic
PW	Probable wetland
U	Upland
LAR1	Wetland ID code

SEE MAP 2BB

15-1 Sample point - obs.
14-2 Sample point

Wetland boundary - distinct
Wetland boundary - not distinct
Study area boundary

9 Drainage way



CANCELLED
2800
2700
2900
502
200
300
600
1800
1801

SEE MAP IS 10 2BD

Bay City Local Wetland Inventory

December 1996

IS 10 2BC

IS 10 2BC

Inventory conducted by: Loverna Wilson, Environmental Consultant, Corvallis, OR; Phil Scoles, Scoles Associates, Portland, OR; and Laura Brophy, Green Point Consulting, Corvallis, OR.

Information on this map is for planning purposes; all wetland boundaries are approximate. There may be upland areas within mapped wetlands; there may also be unmapped wetlands subject to regulation. In all cases regulators will use actual field conditions, not this map, to determine jurisdictional wetland boundaries.

Funding and assistance provided by Oregon Division of State Lands, U.S. Environmental Protection Agency, and the City of Bay City.

Cartography by: C and G White Cartography, Inc.

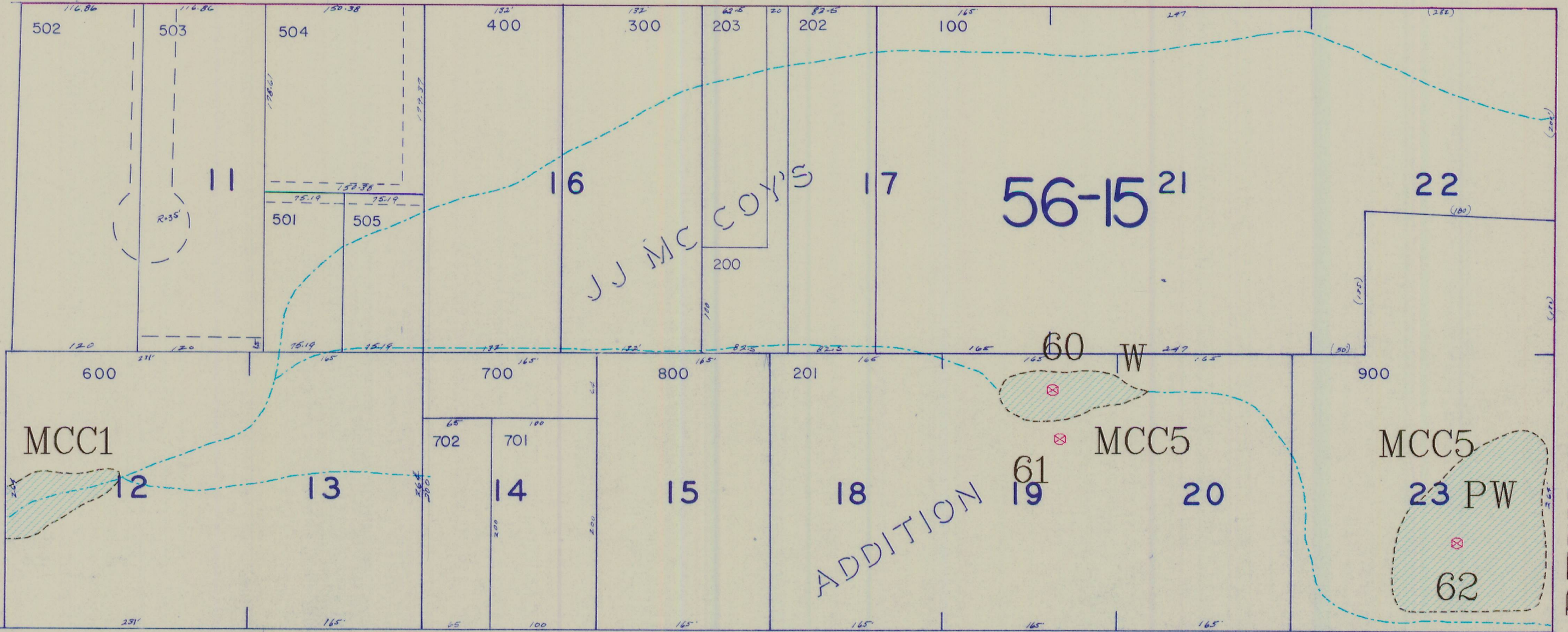
This map was prepared for
assessment purpose only.

SE 1/4 NW 1/4 SEC. 2 T.1S R.10W W.M.
TILLAMOOK COUNTY
1" = 100'

CANCELLED
500
506
1100

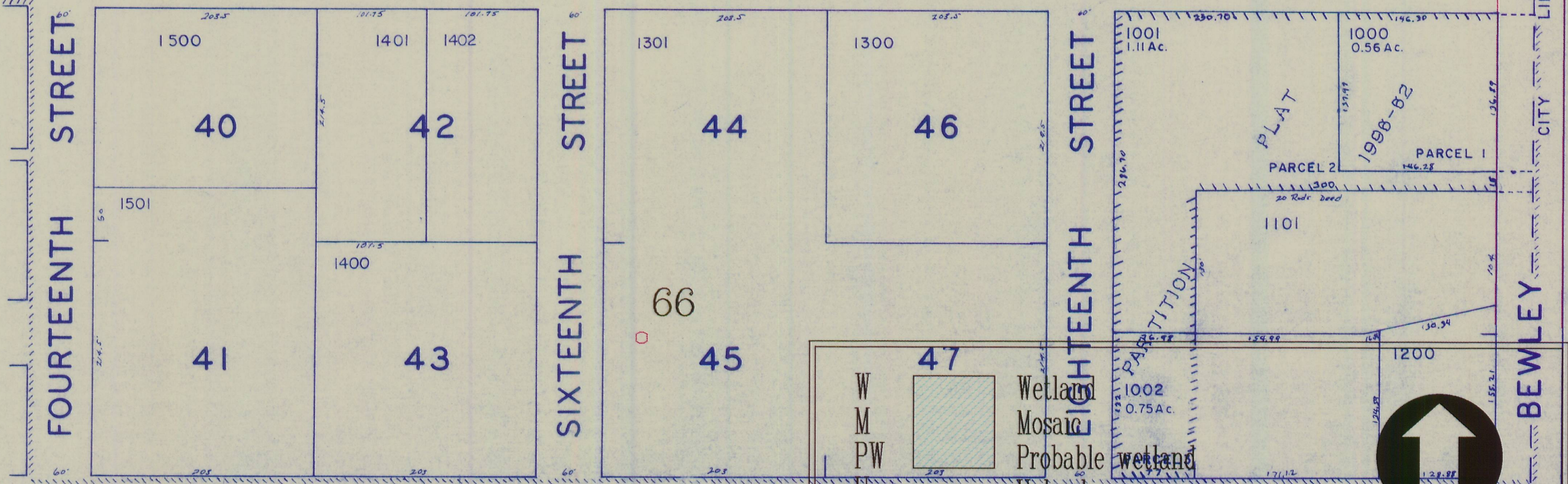
SEE MAP IS 10 2BA

TILLAMOOK AVENUE



Mc COY

STREET



W		Wetland
M		Mosaic
PW		Probable wetland
U		Upland
LAR1		Wetland ID code
○ 15-1		Sample point - obs.
⊗ 14-2		Sample point
—		Wetland boundary - distinct
- - -		Wetland boundary - not distinct
- - - - -		Study area boundary
- - - - -		Drainage way

North



NW 1/4 SW 1/4 SEC. 2 T.1S R.10W W.M.

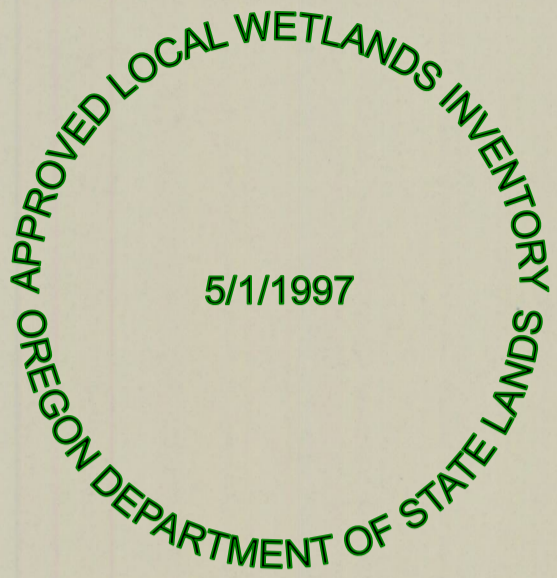
TILLAMOOK COUNTY
NW 1/4 SW 1/4 SEC. 2 T.1S R.10W W.M.

TILLAMOOK COUNTY

1"=100'

This map was prepared for
assessment purpose only

IS 10 2CB
BAY CITY



ANCELLED
700
800
200

SEE MAP IS 10 2BC



SEE MAP IS 10 2CA

101

W	Wetland
MW	Mosaic
PW	Probable wetland
U	Upland
LAR1	Wetland ID code
○ 15-1	Sample point - obs.
⊗ 14-2	Sample point
—	Wetland boundary - distinct
---	Wetland boundary - not distinct
---	Study area boundary
---	Drainage way

North

Bay City Local Wetland Inventory

December 1996

IS 10 2CB

Inventory conducted by: Loverna Wilson, Environmental Consultant, Corvallis, OR; Phil Scoles, Scoles Associates, Portland, OR; and Laura Brophy, Green Point Consulting, Corvallis, OR.

Information on this map is for planning purposes; all wetland boundaries are approximate. There may be upland areas within mapped wetlands; there may also be unmapped wetlands subject to regulation. In all cases regulators will use actual field conditions, not this map, to determine jurisdictional wetland boundaries.

Funding and assistance provided by Oregon Division of State Lands, U.S. Environmental Protection Agency, and the City of Bay City.

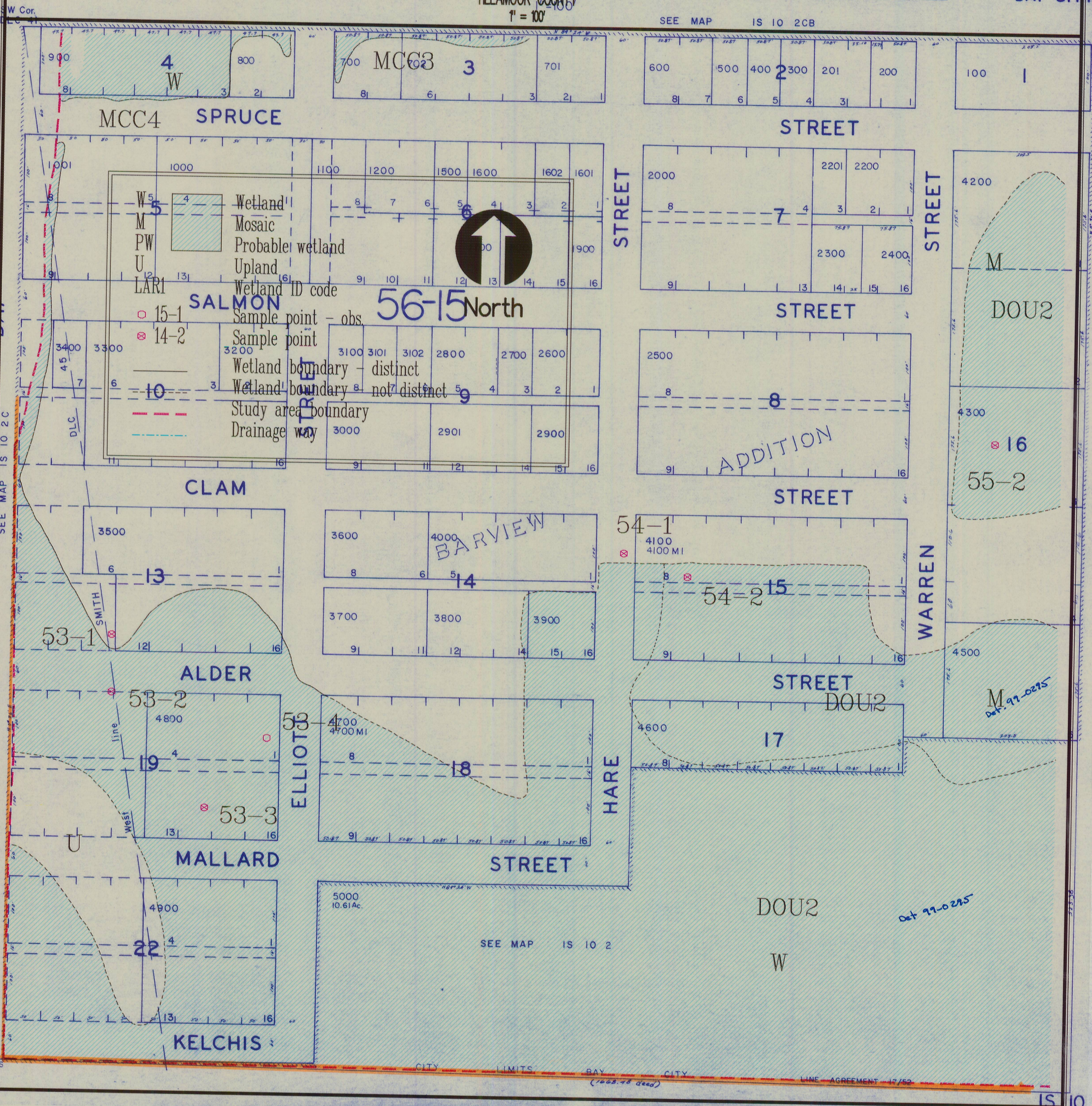
Cartography by: C and G White Cartography, Inc.

IS 10 2

SW 1/4 SW 1/4 SEC. 2 T.15 R.10W W.M.
TILLAMOOK COUNTY

This map was prepared for assessment purpose only.

IS 10 2CC
BAY CITY



CANCELLED
1400
2100
1300
4400
4401

SEE MAP IS 10 2

Bay City Local Wetland Inventory December 1996 IS 10 2CC

Inventory conducted by: Loverna Wilson, Environmental Consultant, Corvallis, OR; Phil Scoles, Scoles Associates, Portland, OR; and Laura Brophy, Green Point Consulting, Corvallis, OR.

Information on this map is for planning purposes; all wetland boundaries are approximate. There may be upland areas within mapped wetlands; there may also be unmapped wetlands subject to regulation. In all cases regulators will use actual field conditions, not this map, to determine jurisdictional wetland boundaries.

Funding and assistance provided by Oregon Division of State Lands, U.S. Environmental Protection Agency, and the City of Bay City. Cartography by: C and G White Cartography, Inc.

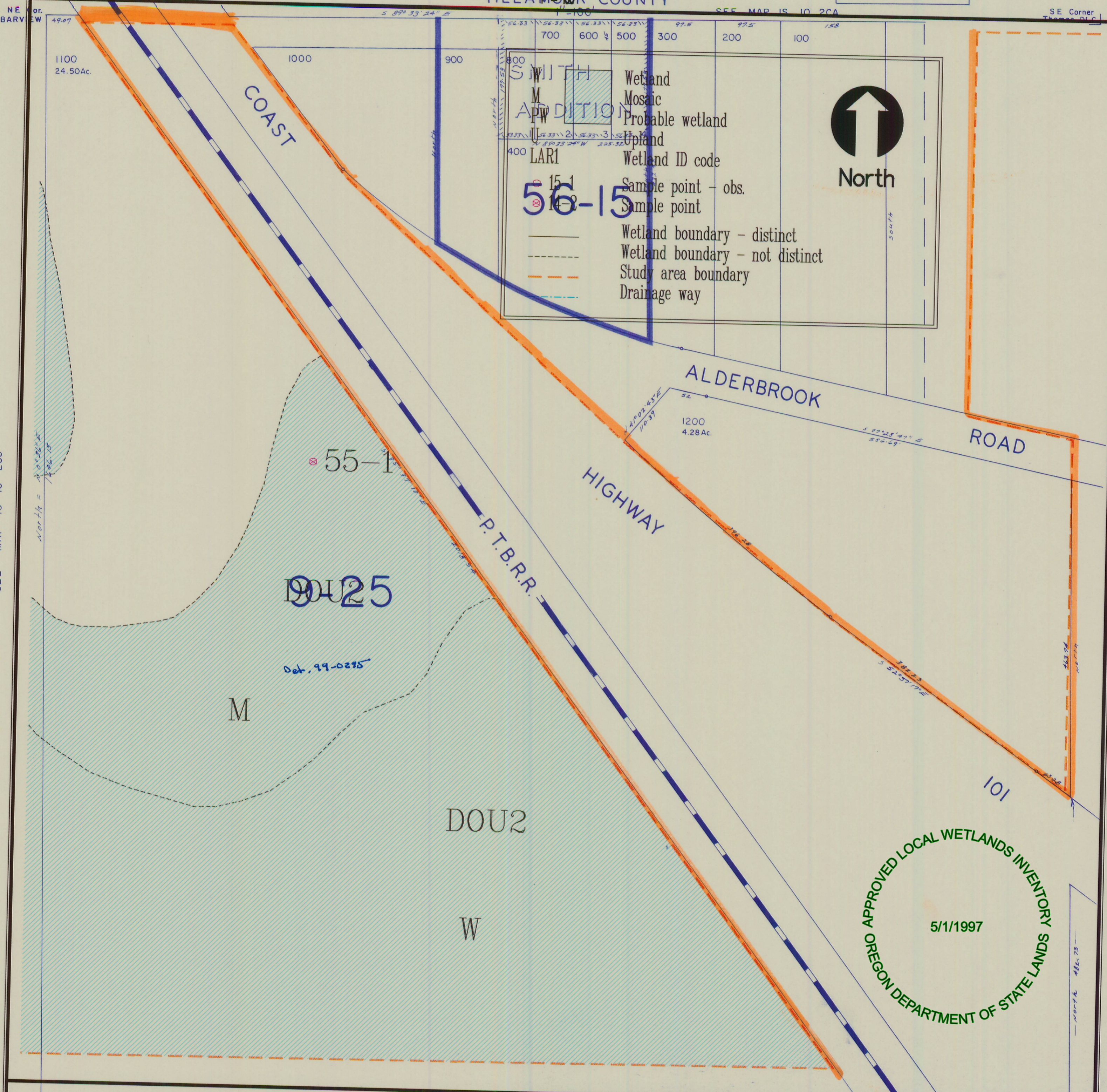
SE 1/4 SW 1/4 SEC. 2 T.1S R.10W W.M.

SE 1/4 SW 1/4 SEC. 2 T.1S R.10W W.M.

TILLAMOOK COUNTY

This map was prepared for assessment purpose only.

IS 10 2CD



SEE MAP IS 10 2CC

SEE MAP IS 10 2D

IS 10 2CD

Bay City Local Wetland Inventory

December 1996

IS 10 2CD

Inventory conducted by: Loverna Wilson, Environmental Consultant, Corvallis, OR; Phil Scoles, Scoles Associates, Portland, OR; and Laura Brophy, Green Point Consulting, Corvallis, OR.

Information on this map is for planning purposes; all wetland boundaries are approximate. There may be upland areas within mapped wetlands; there may also be unmapped wetlands subject to regulation. In all cases regulators will use actual field conditions, not this map, to determine jurisdictional wetland boundaries.

Funding and assistance provided by Oregon Division of State Lands, U.S. Environmental Protection Agency, and the City of Bay City.

Cartography by: C and G White Cartography, Inc.

This map was prepared for
 assessment purpose only.

1"=100'

SEE MAP IN 10 34DD

34 35



SEE MAP IS 10 2BB

SEE MAP IS 10 2BC

IS 10 3AA

W		Wetland
M		Mosaic
PW		Probable wetland
U		Upland
LAR1		Wetland ID code
○ 15-1		Sample point - obs.
⊗ 14-2		Sample point
—		Wetland boundary - distinct
- - -		Wetland boundary - not distinct
- - - -		Study area boundary
- · - · -		Drainage way

North

Bay City Local Wetland Inventory

December 1996

IS 10 3AA

Inventory conducted by: Loverna Wilson, Environmental Consultant, Corvallis, OR; Phil Scoles, Scoles Associates, Portland, OR; and Laura Brophy, Green Point Consulting, Corvallis, OR.

Information on this map is for planning purposes; all wetland boundaries are approximate. There may be upland areas within mapped wetlands; there may also be unmapped wetlands subject to regulation. In all cases regulators will use actual field conditions, not this map, to determine jurisdictional wetland boundaries.

Funding and assistance provided by Oregon Division of State Lands, U.S. Environmental Protection Agency, and the City of Bay City.

Cartography by: C and G White Cartography, Inc.