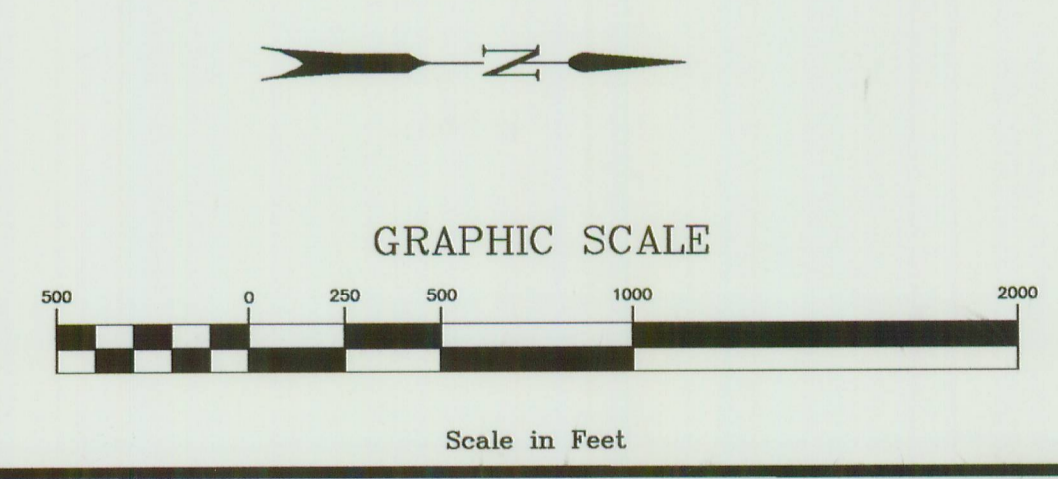


Watershed Boundary
 Project Boundary/UGB
 Potentially Jurisdictional Waterways
 Approximate bank of Columbia River
 75 ft setback of Approximate bank of Columbia River

DATE: June, 2005
 BASE MAP INFO: Supplied by Hood River County
 JOB NO.: 2669

APPROVED WETLANDS INVENTORY
 Oregon Department of State Lands
 Meets Local Wetlands Inventory standards
 Date 5/17/05 Approved by J. Barber



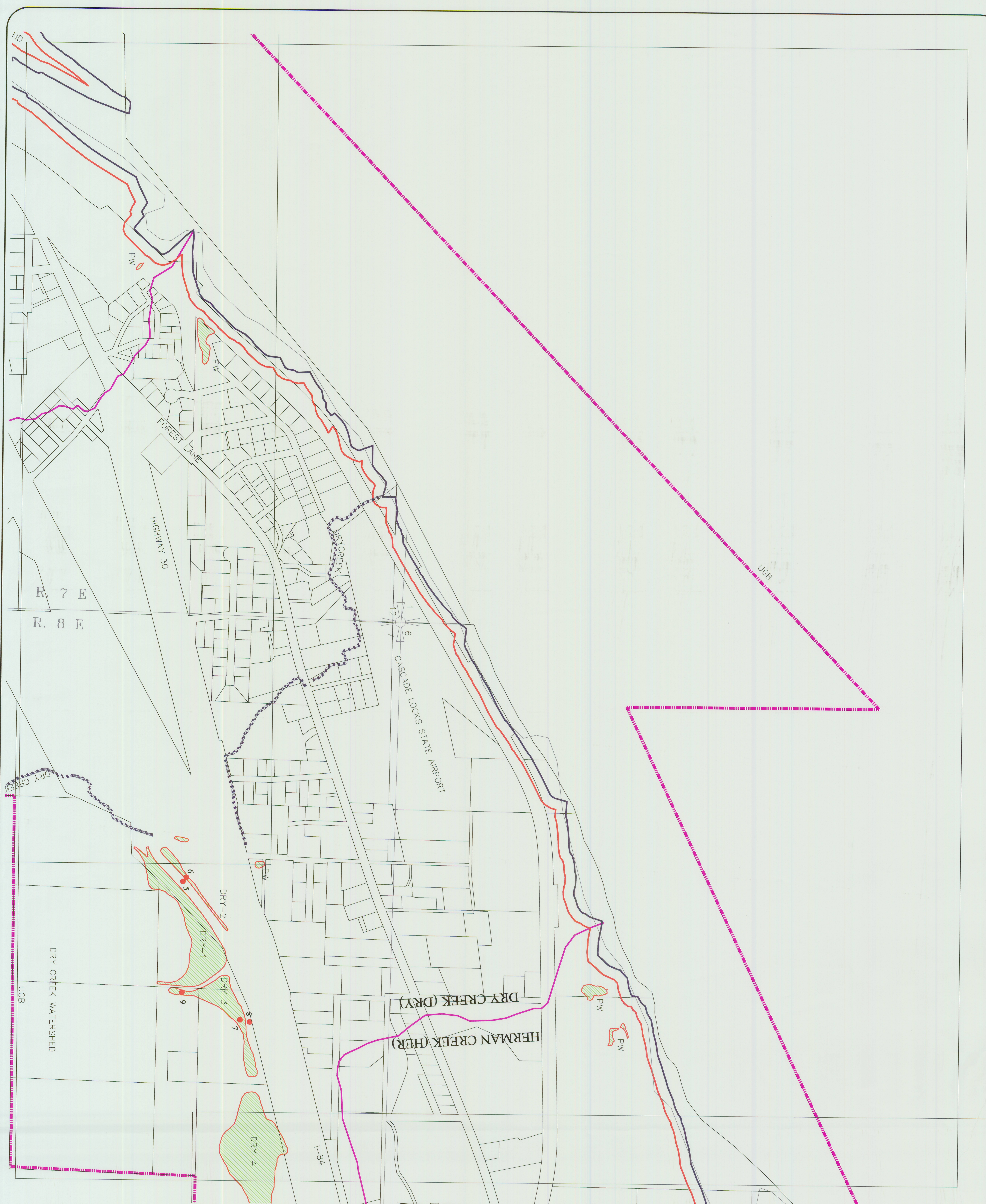
THIS MAP WAS FUNDED BY OREGON DEPARTMENT OF LAND CONSERVATION AND LAND DEVELOPMENT

THIS MAP IS FOR PLANNING PURPOSES ONLY
 WETLAND BOUNDARIES ARE APPROXIMATE
 AND SUBJECT TO CHANGE
 Information shown on this map is for planning purposes only and wetland information is subject to change. There may be unmapped wetlands subject to regulation and all wetland boundary mapping is approximate. In all cases, actual field conditions determine wetland boundaries. You are advised to contact the Department of State Lands and the U.S. Army Corps of Engineers with any regulatory questions.



Cascade Locks Local Wetlands Inventory

INDEX SHEET

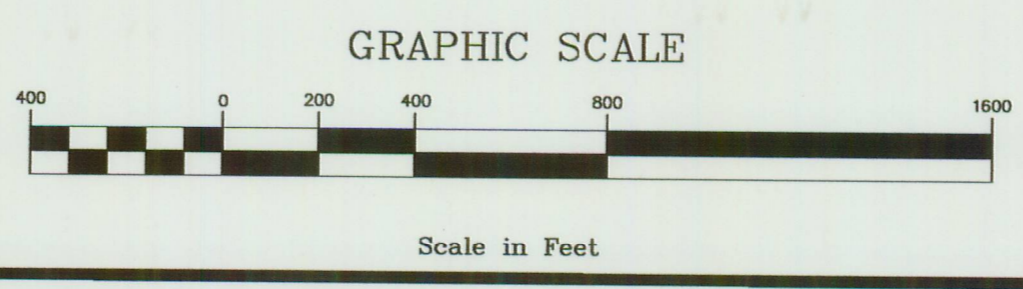


Watershed Boundary
 Project Boundary/UGB
 Potentially Jurisdictional Waterways
 Approximate bank of Columbia River
 75 ft setback of Approximate bank of Columbia River

Wetland Field Verified
 Sample Point
 Wetland Code
 Probable Wetland

APPROVED WETLANDS INVENTORY
 Oregon Department of State Lands
 Meets LCW standards
 Date 5/1/05 Approved by J. J. Merlan

58
 HER-1
 PW



THIS MAP WAS FUNDED BY OREGON DEPARTMENT OF LAND CONSERVATION AND LAND DEVELOPMENT

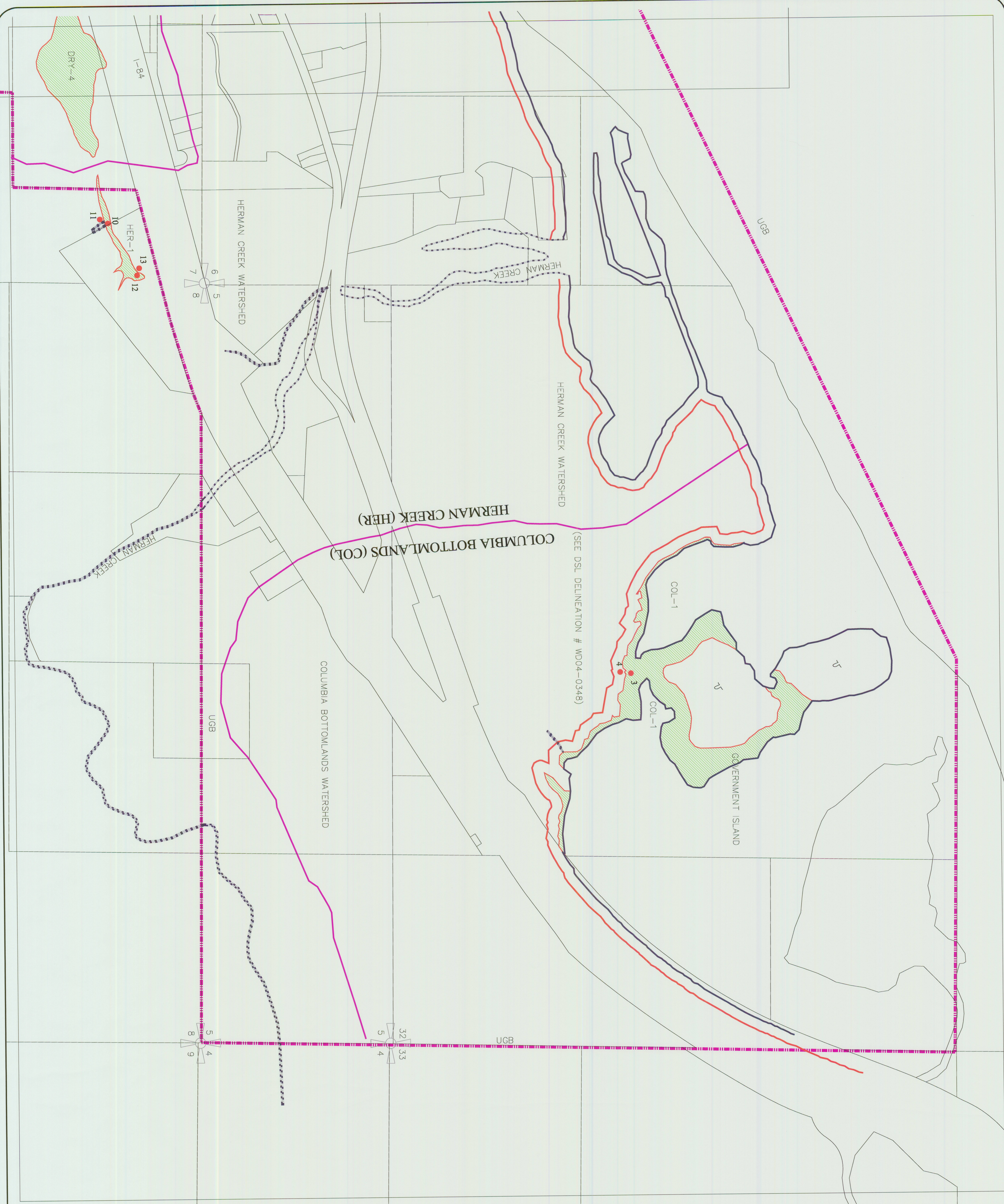
THIS MAP IS FOR PLANNING PURPOSES ONLY. WETLAND BOUNDARIES ARE APPROXIMATE AND SUBJECT TO CHANGE. Information shown on this map is for planning purposes only and wetland information is subject to change. There may be unmapped wetlands subject to regulation and all wetland boundary mapping is approximate. In all cases, actual field conditions determine wetland boundaries. You are advised to contact the Department of State Lands and the U.S. Army Corps of Engineers with any regulatory questions.

DATE: June, 2005
 BASE MAP INFO: Supplied by Hood River County
 JOB NO.: 2669

Cascade Locks Local Wetlands Inventory



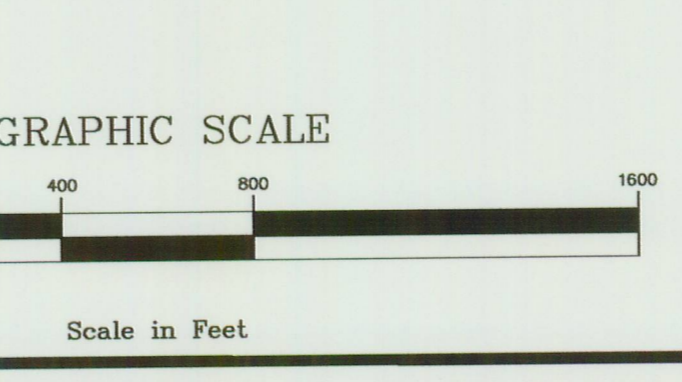
Sheet: 2
 of: 3



Watershed Boundary
Project Boundary/UGB
Potentially Jurisdictional Waterways
Approximate bank of Columbia River
75 ft setback of Approximate bank of Columbia River

Wetland Field Verified
Sample Point
Wetland Code
Probable Wetland

APPROVED WETLANDS INVENTORY
 Oregon Department of State Lands
 Meets 1-0-2 standards
 Date 5/15/06 Approved by J. M. ...



THIS MAP WAS FUNDED BY OREGON DEPARTMENT OF LAND CONSERVATION AND LAND DEVELOPMENT

THIS MAP IS FOR PLANNING PURPOSES ONLY
 WETLAND BOUNDARIES ARE APPROXIMATE AND SUBJECT TO CHANGE
 Information shown on this map is for planning purposes only and wetland information is subject to change. There may be unmapped wetlands subject to regulation and all wetland boundary mapping is approximate. In all cases, actual field conditions determine wetland boundaries. You are advised to contact the Department of State Lands and the U.S. Army Corps of Engineers with any regulatory questions.

DATE: June, 2005
 BASE MAP INFO: Supplied by Hood River County
 JOB NO.: 2669

Cascade Locks Local Wetlands Inventory

