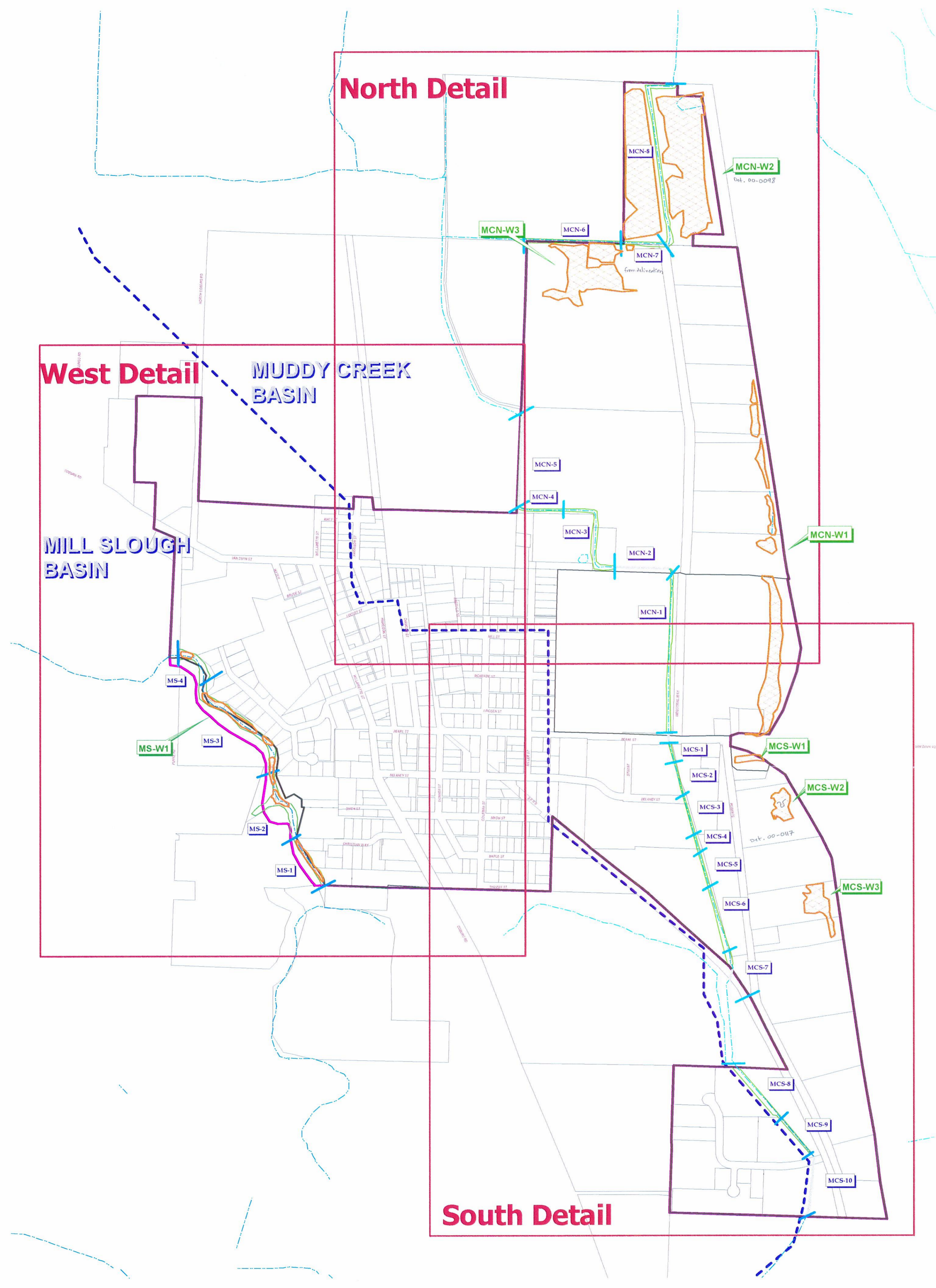


# COBURG LOCAL WETLANDS & RIPARIAN AREA INVENTORY INDEX MAP



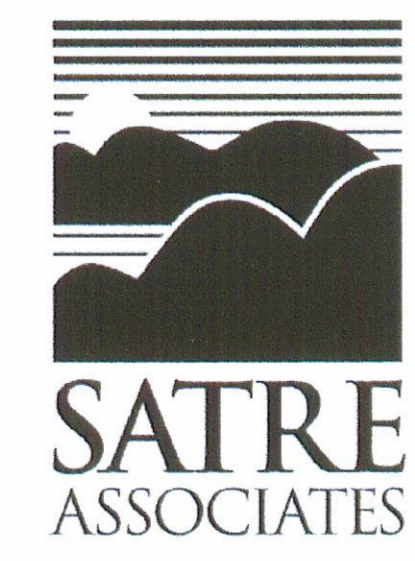
SCALE: 1" = 500'

February 2000

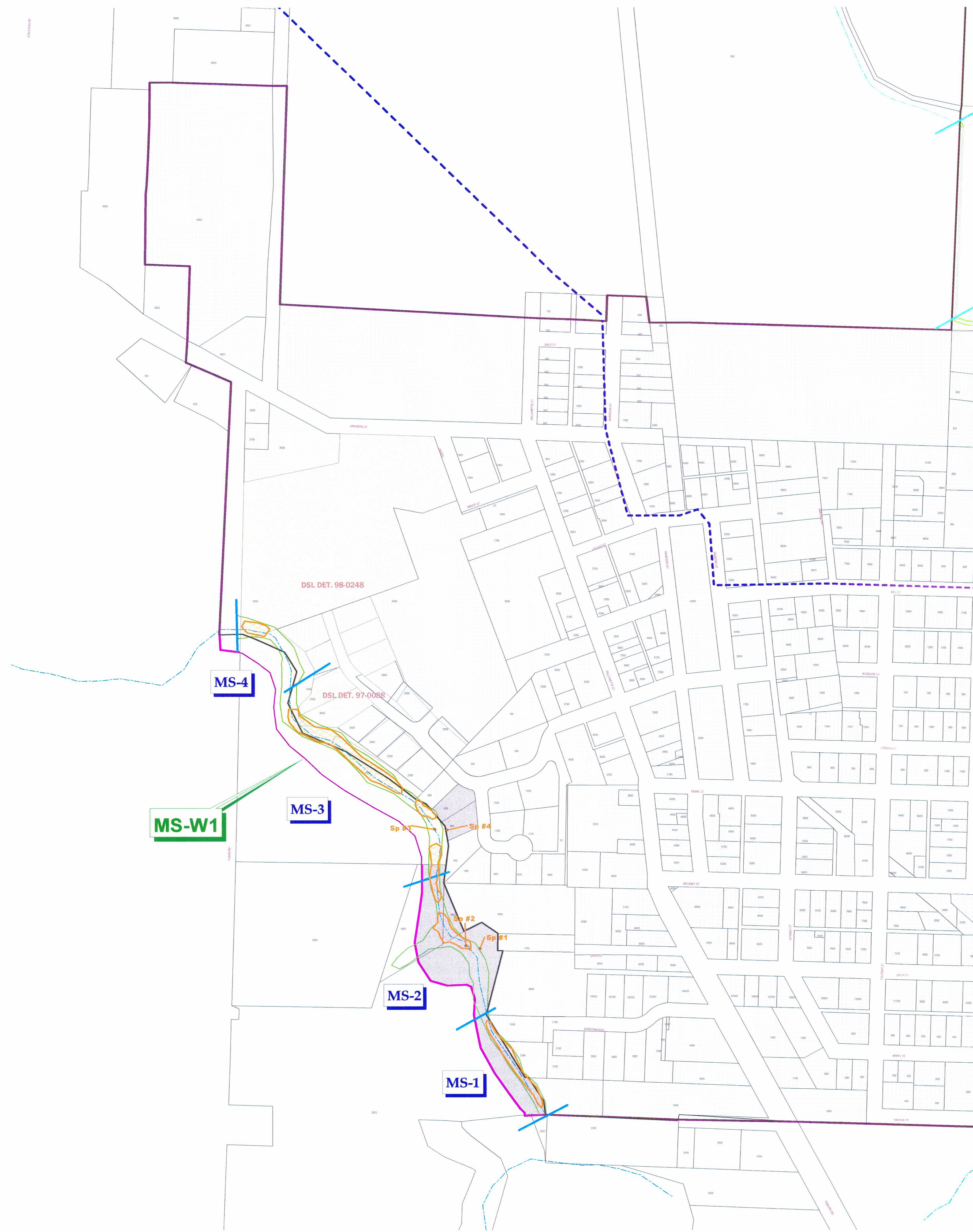


Wetland & Riparian Legend			
	Wetlands		Quadrants
	Riparian reach		Study area boundary
	Riparian vegetation		Coburg City Limits
	Streams		Coburg UGB
	Culverts		Tax lots
	Drainage Basin Boundary		

WETLAND INFORMATION SUBJECT TO CHANGE  
 This map is for planning purposes only. Mapped wetland boundaries were not flagged or surveyed, but are accurate to within 25 feet. There may be unmapped wetlands subject to regulation. In all cases, actual field conditions determine wetland boundaries. You are advised to contact the Oregon Division of State Lands or the U.S. Army Corps of Engineers with any regulatory questions. Funding for this study was provided by a grant from the Division of State Lands, wetland planning assistance grant program. This grant program is supported by a grant from the U.S. Environmental Protection Agency under authority of the Clean Water Act.



# COBURG LOCAL WETLANDS & RIPARIAN AREA INVENTORY WEST DETAIL MAP

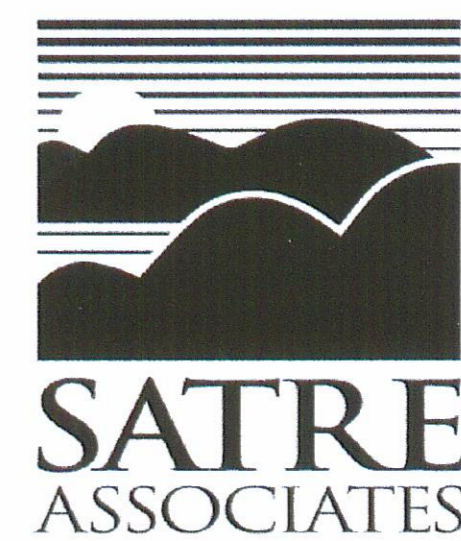


0 200 400 600 800 1000 Feet

SCALE: 1" = 200'  
February 2000

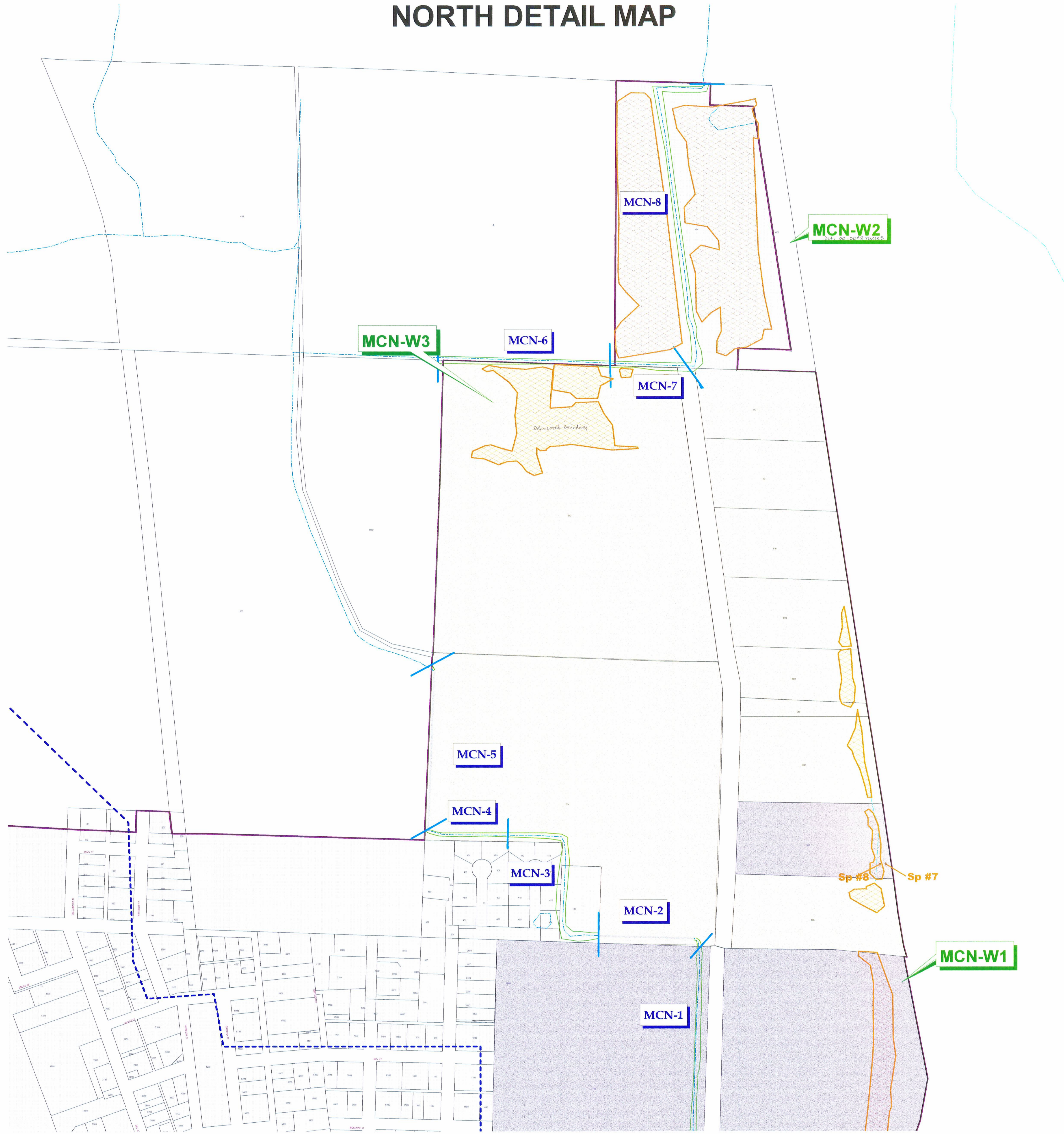
Wetland & Riparian Legend			
	Wetlands		Study area boundary
	Riparian reach		Coburg City Limits
	Riparian vegetation		Coburg UGB
	Streams		Tax lots
	Culverts		Sp# Sample point
			On-site Determination
			Off-site Determination
			Prior Delineation
			Drainage Basin Boundary

WETLAND INFORMATION SUBJECT TO CHANGE  
This map is for planning purposes only. Mapped wetland boundaries were not flagged or surveyed, but are accurate to within 25 feet. There may be unmapped wetlands subject to regulation. In all cases, actual field conditions determine wetland boundaries. You are advised to contact the Oregon Division of State Lands or the U.S. Army Corps of Engineers with any regulatory questions. Funding for this study was provided by a grant from the Division of State Lands, wetland planning assistance grant program. This grant program is supported by a grant from the U.S. Environmental Protection Agency under authority of the Clean Water Act.



APPROVED WETLANDS INVENTORY  
Oregon Division of State Lands  
Meets LWZ standards  
Date 4/00 Approved by L.Homesath

# COBURG LOCAL WETLANDS & RIPARIAN AREA INVENTORY NORTH DETAIL MAP



## Wetland & Riparian Legend

- |                     |                         |                     |
|---------------------|-------------------------|---------------------|
| Wetlands            | On-site Determination   | Study area boundary |
| Riparian reach      | Off-site Determination  | Coburg City Limits  |
| Riparian vegetation | Prior Delineation       | Coburg UGB          |
| Streams             | Sp# Sample point        | Tax lots            |
| Culverts            | Drainage Basin Boundary |                     |

0 200 400 600 800 1000 Feet

SCALE: 1" = 200'

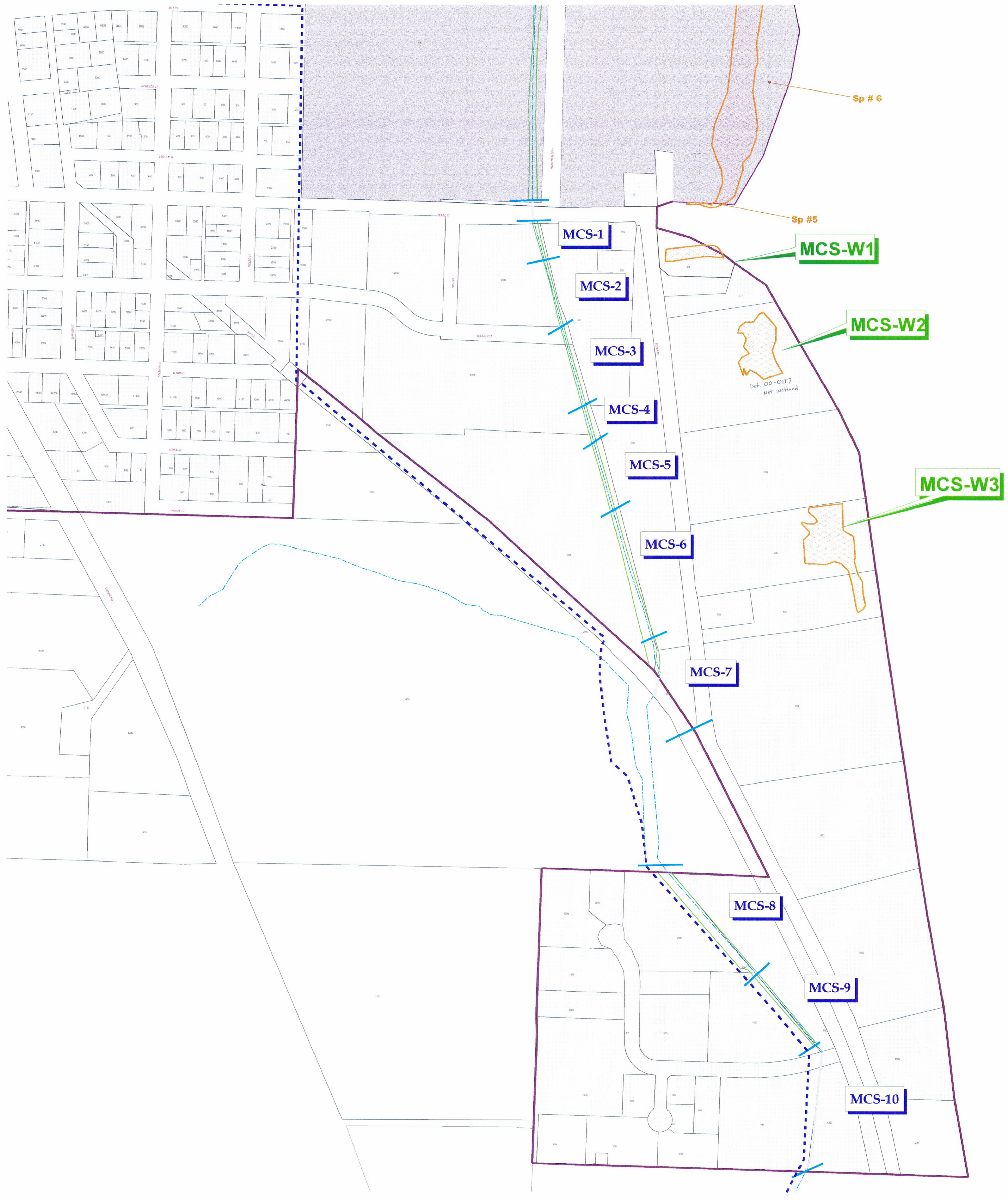
February 2000

WETLAND INFORMATION SUBJECT TO CHANGE  
This map is for planning purposes only. Mapped wetland boundaries were not flagged or surveyed, but are accurate to within 25 feet. There may be unmapped wetlands subject to regulation. In all cases, actual field conditions determine wetland boundaries. You are advised to contact the Oregon Division of State Lands or the U.S. Army Corps of Engineers with any regulatory questions. Funding for this study was provided by a grant from the Division of State Lands, wetland planning assistance program. This grant program is supported by a grant from the U.S. Environmental Protection Agency under authority of the Clean Water Act.



APPROVED WETLANDS INVENTORY  
Oregon Division of State Lands  
Meets LWZ standards  
Date: 4/00. Approved by: L. Hennessey

# COBURG LOCAL WETLANDS & RIPARIAN AREA INVENTORY SOUTH DETAIL MAP

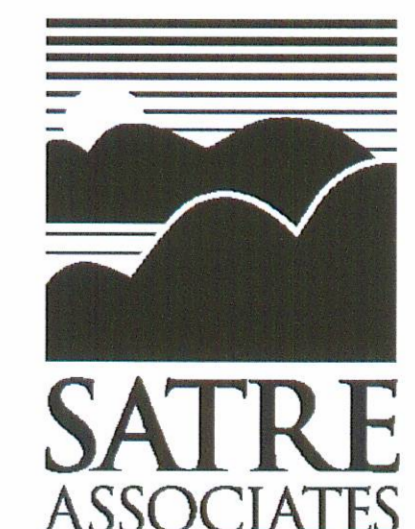


**Wetland & Riparian Legend**

Wetlands	On-site Determination	Study area boundary
Riparian reach	Off-site Determination	Coburg City Limits
Riparian vegetation	Prior Delineation	Coburg UGB
Streams	Sp# Sample point	Tax lots
Culverts	Drainage Basin Boundary	

0 200 400 600 800 1000 Feet

SCALE: 1" = 200'  
February 2000



**WETLAND INFORMATION SUBJECT TO CHANGE**  
This map is for planning purposes only. Mapped wetland boundaries were not flagged or surveyed, but are accurate to within 25 feet. There may be unmapped wetlands subject to regulation. In all cases, actual field conditions determine wetland boundaries. You are advised to contact the Oregon Division of State Lands or the U.S. Army Corps of Engineers with any regulatory questions. Funding for this study was provided by a grant from the Division of State Lands, wetland planning assistance grant program. This grant program is supported by a grant from the U.S. Environmental Protection Agency under authority of the Clean Water Act.

APPROVED WETLANDS INVENTORY  
Oregon Division of State Lands  
Meets LW 2 standards  
Date 4/00 Approved by L. Hemesath