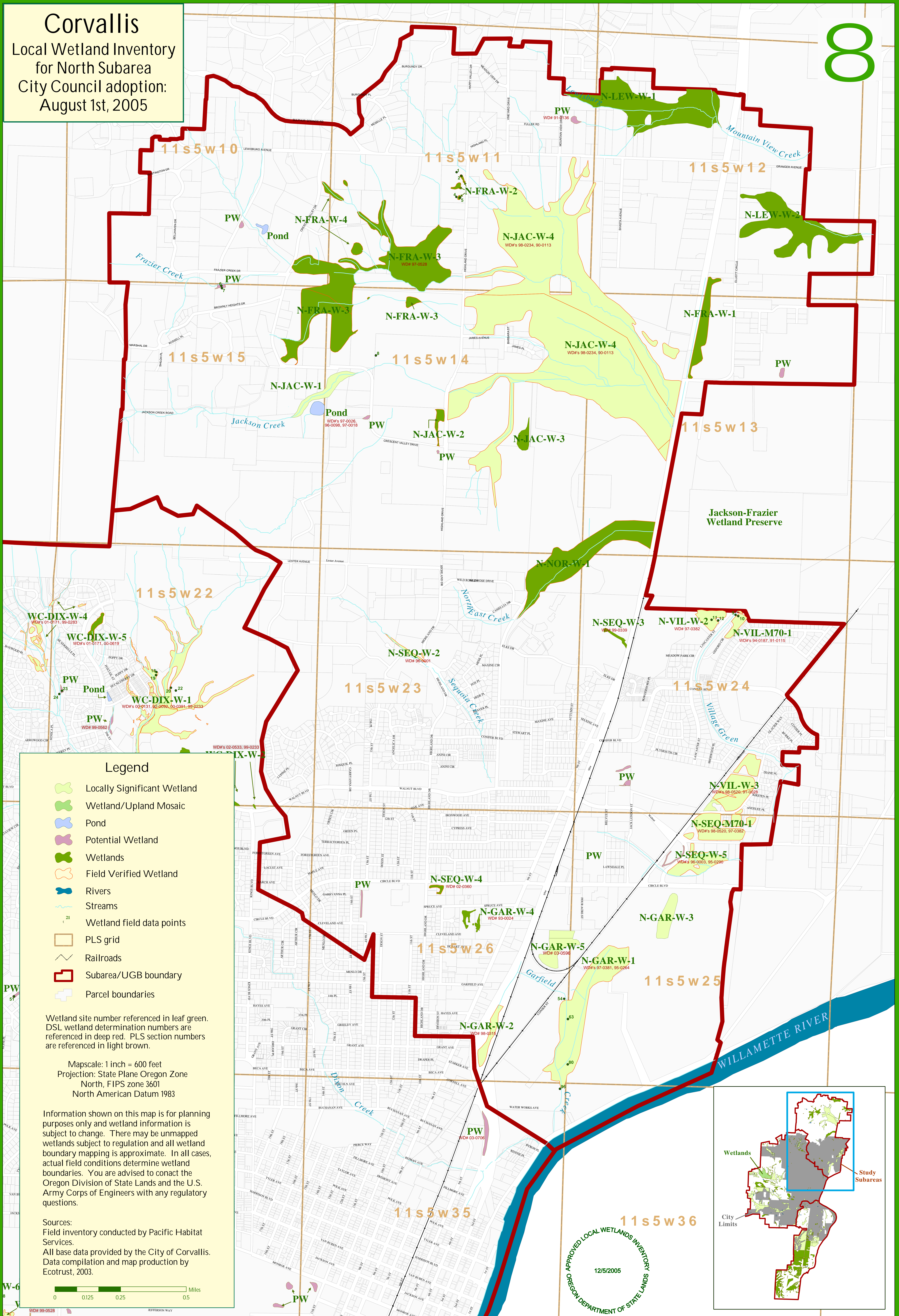


Corvallis

Local Wetland Inventory
for North Subarea
City Council adoption:
August 1st, 2005

8



Legend

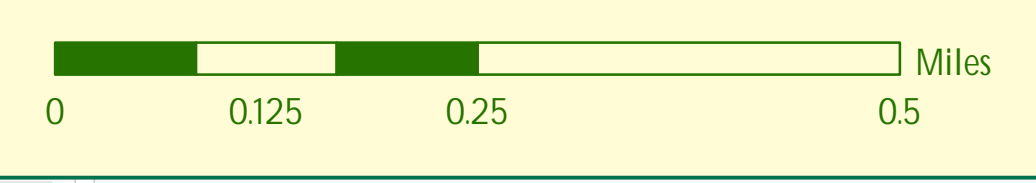
- Locally Significant Wetland
- Wetland/Upland Mosaic
- Pond
- Potential Wetland
- Wetlands
- Field Verified Wetland
- Rivers
- Streams
- Wetland field data points
- PLS grid
- Railroads
- Subarea/UGB boundary
- Parcel boundaries

Wetland site number referenced in leaf green. DSL wetland determination numbers are referenced in deep red. PLS section numbers are referenced in light brown.

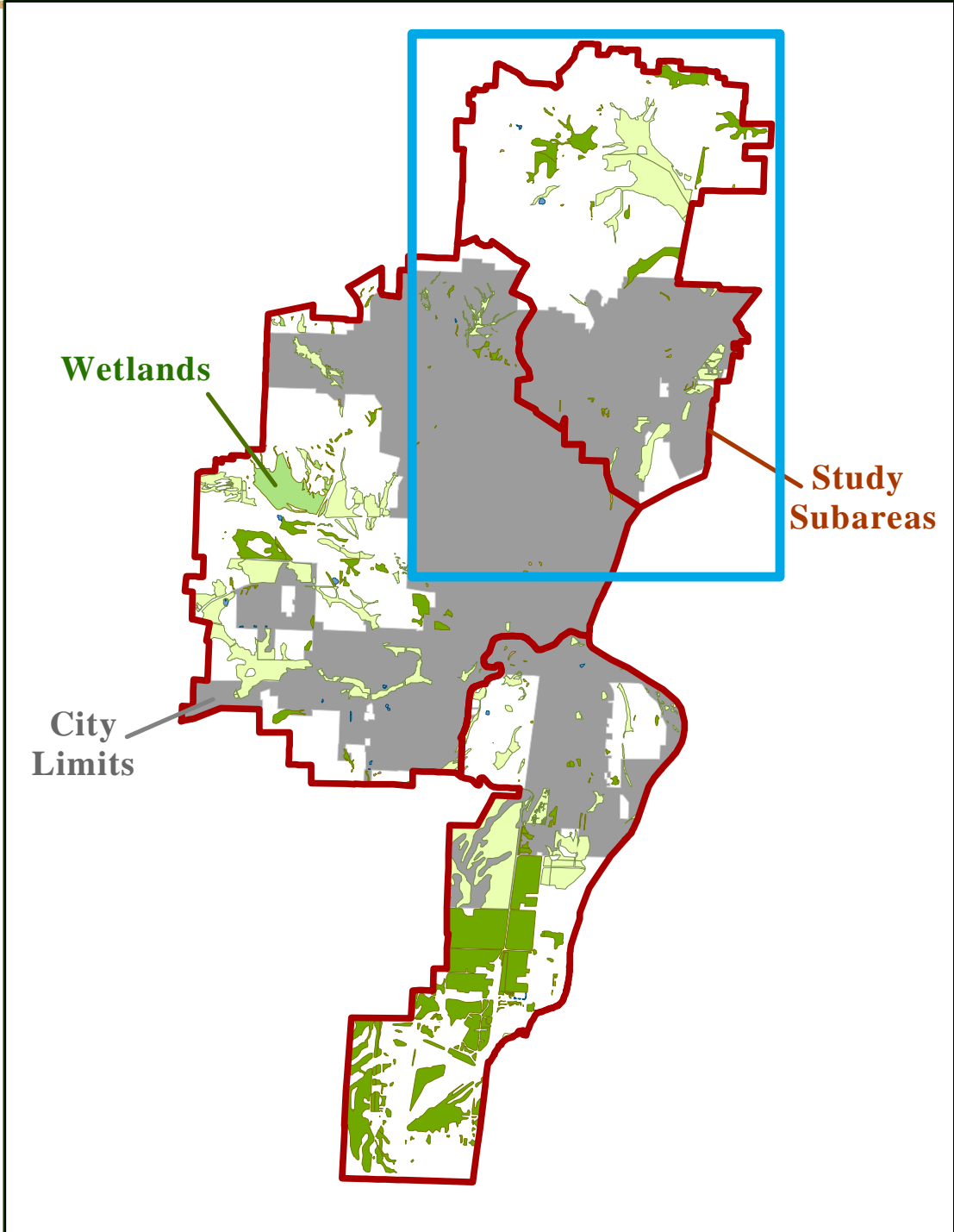
Mapscale: 1 inch = 600 feet
Projection: State Plane Oregon Zone
North, FIPS zone 3601
North American Datum 1983

Information shown on this map is for planning purposes only and wetland information is subject to change. There may be unmapped wetlands subject to regulation and all wetland boundary mapping is approximate. In all cases, actual field conditions determine wetland boundaries. You are advised to contact the Oregon Division of State Lands and the U.S. Army Corps of Engineers with any regulatory questions.

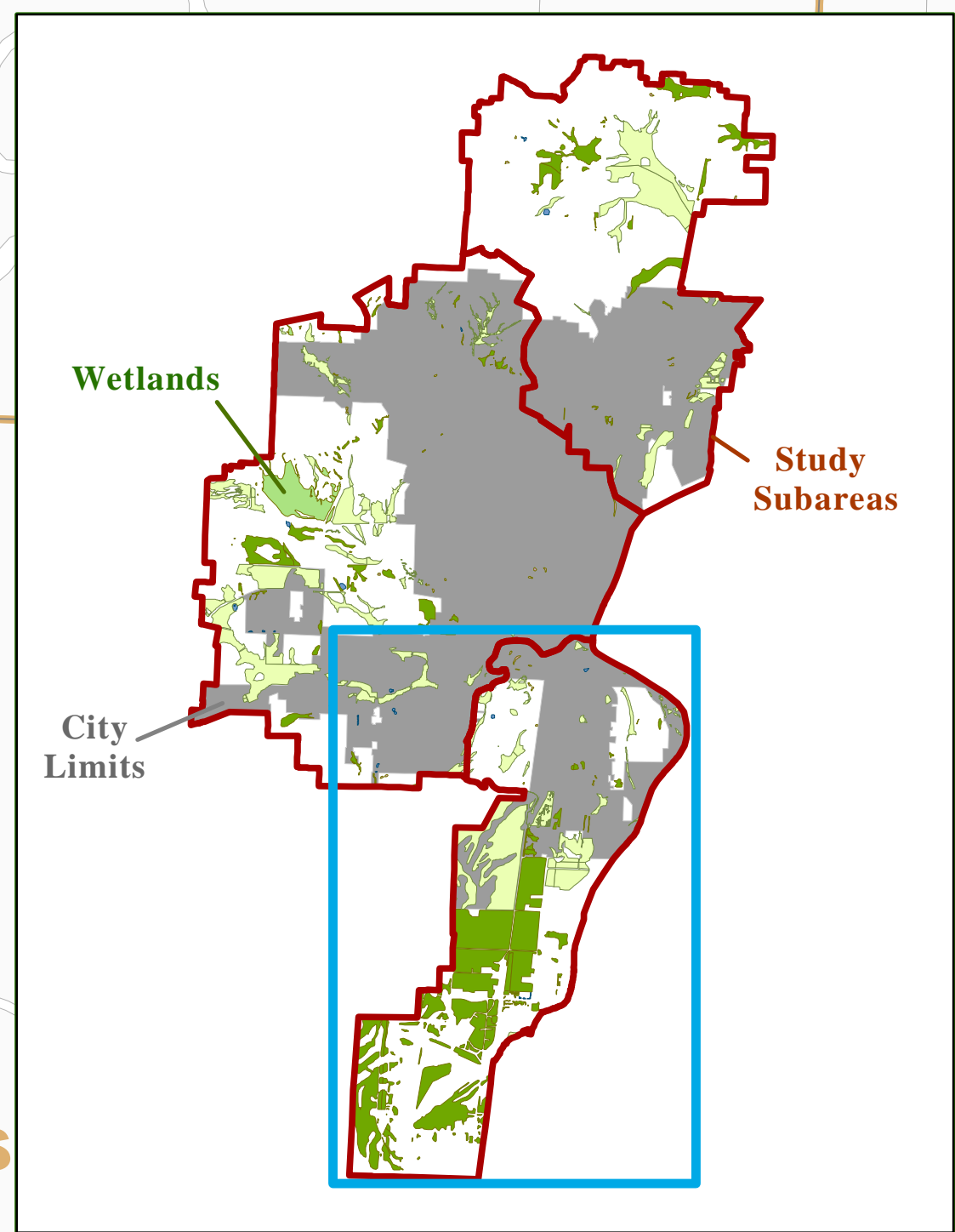
Sources:
Field inventory conducted by Pacific Habitat Services.
All base data provided by the City of Corvallis.
Data compilation and map production by Ecotrust, 2003.



APPROVED LOCAL WETLANDS INVENTORY
12/5/2005
OREGON DEPARTMENT OF STATE LANDS



Corvallis
Local Wetland Inventory
for South Subarea
City Council adoption:
August 1st, 2005



Legend

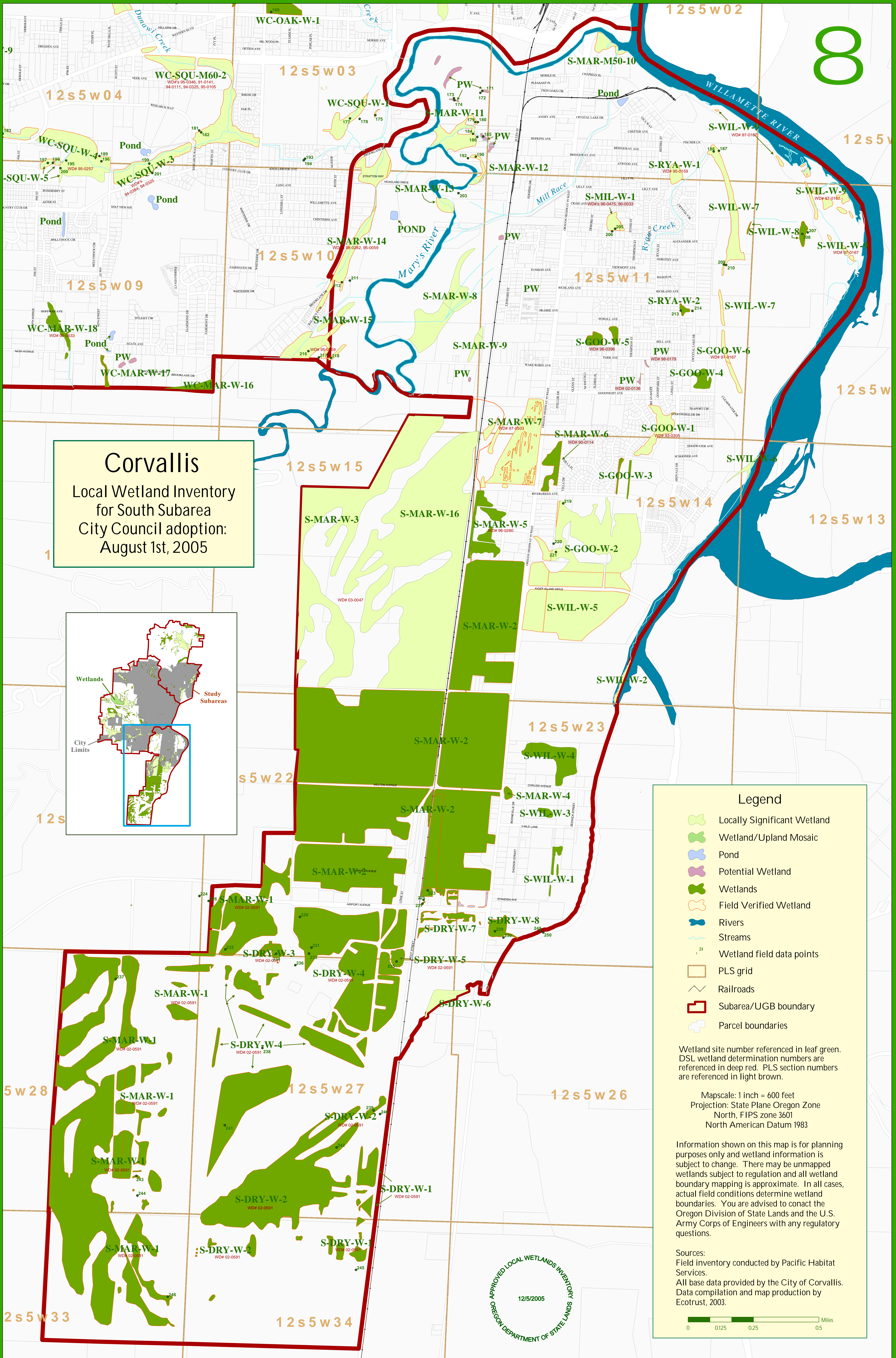
- Locally Significant Wetland
- Wetland/Upland Mosaic
- Pond
- Potential Wetland
- Wetlands
- Field Verified Wetland
- Rivers
- Streams
- Wetland field data points
- PLS grid
- Railroads
- Subarea/UGB boundary
- Parcel boundaries

Wetland site number referenced in leaf green.
DSL wetland determination numbers are referenced in deep red. PLS section numbers are referenced in light brown.

Mapscale: 1 inch = 600 feet
Projection: State Plane Oregon Zone North, FIPS zone 3601
North American Datum 1983

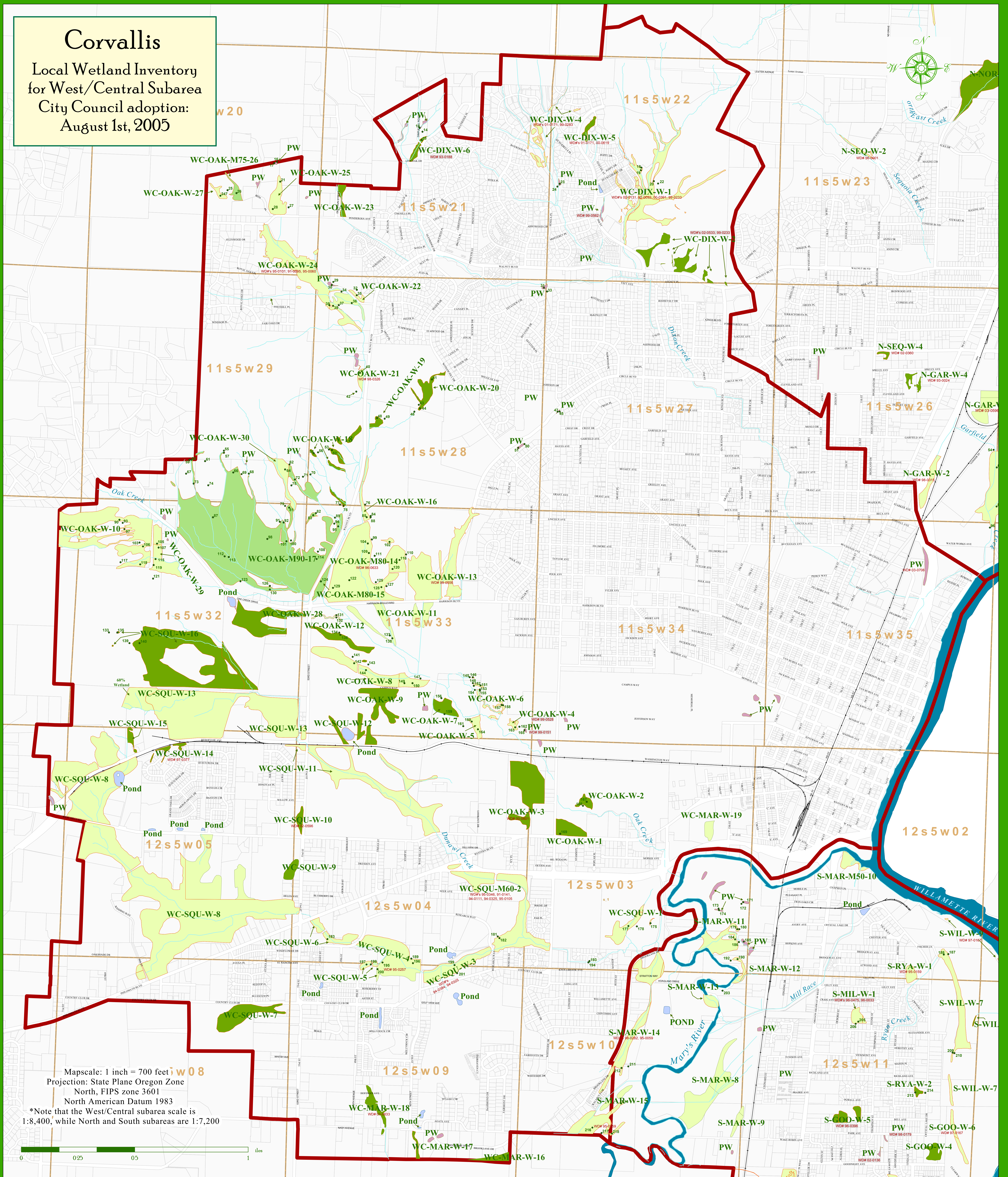
Information shown on this map is for planning purposes only and wetland information is subject to change. There may be unmapped wetlands subject to regulation and all wetland boundary mapping is approximate. In all cases, actual field conditions determine wetland boundaries. You are advised to contact the Oregon Division of State Lands and the U.S. Army Corps of Engineers with any regulatory questions.

Sources:
Field inventory conducted by Pacific Habitat Services.
All base data provided by the City of Corvallis.
Data compilation and map production by Ecotrust, 2003.



Corvallis

Local Wetland Inventory
for West/Central Subarea
City Council adoption:
August 1st, 2005



Mapscale: 1 inch = 700 feet
Projection: State Plane Oregon Zone
North, FIPS zone 3601
North American Datum 1983
*Note that the West/Central subarea scale is
1:8,400, while North and South subareas are 1:7,200

Legend

- Locally Significant Wetland
- Wetland/Upland Mosaic
- Pond
- Potential Wetland
- Wetlands
- Field Verified Wetland
- Wetland field data points
- Subarea/UGB boundary
- Parcel boundaries
- PLS grid
- Railroads
- Rivers
- Streams

Wetland site number referenced in leaf green.
DSL wetland determination numbers are
referenced in deep red. PLS section numbers
are referenced in light brown.

Sources:
Field inventory conducted by Pacific Habitat
Services.
All base data provided by the City of Corvallis.
Data compilation and map production by
Ecotrust, 2003.

Information shown on this map is for planning
purposes only and wetland information is
subject to change. There may be unmapped
wetlands subject to regulation and all wetland
boundary mapping is approximate. In all cases,
actual field conditions determine wetland
boundaries. You are advised to contact the
Oregon Division of State Lands and the U.S.
Army Corps of Engineers with any regulatory
questions.

