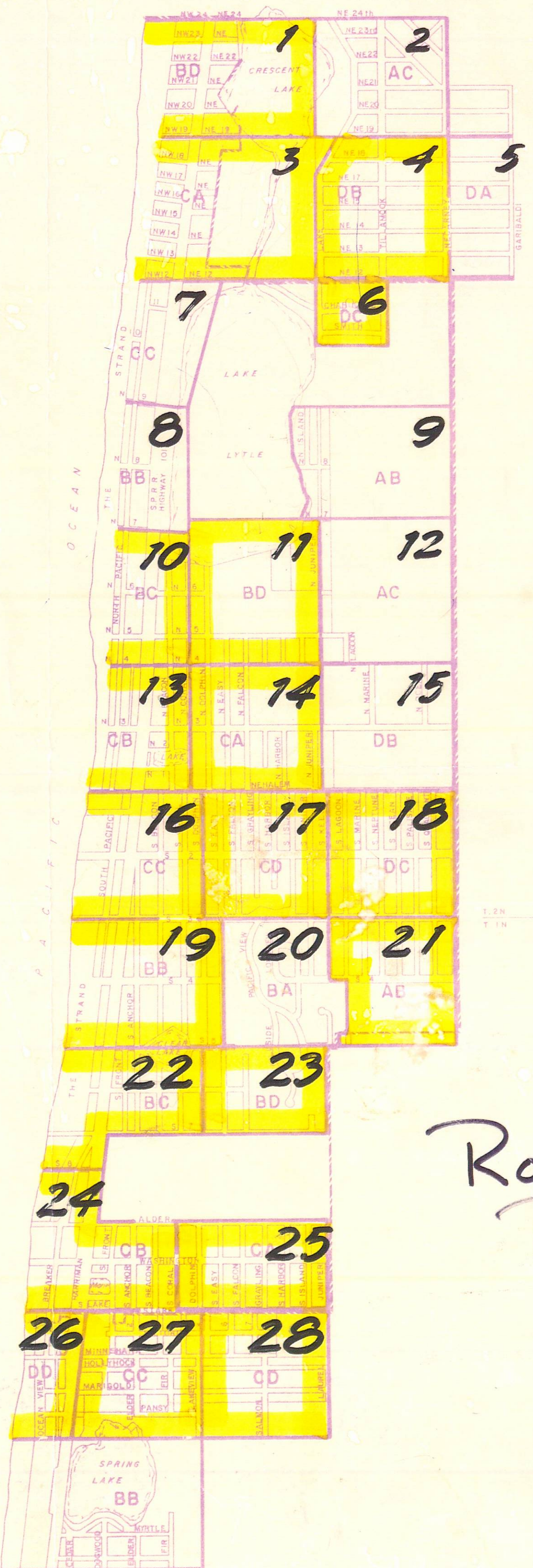


This map was prepared for assessment purpose only

ADDITION	MAP BLOCKS
BEACHWOOD ESTATES	32DB
BEALS	32AB 74 Thru 83 Vac.
	32AC 59 Thru 73 Vac.
	32BC 48,49,50,51
	32BD 52 Thru 58
DUFFRAIN HEIGHTS	32CA
ELMORE PARK	5BB
HIGHLAND PARK	29CA
LAKE LYTLE	29CC 1 Thru 10
	32BA 12,13,18
	32BB 14,15,16,19,20,21
	32BC 30 Thru 34, 43 Thru 47
	32BD 23 Thru 29, 36 Thru 42
MANHATTAN	29BD
MANHATTAN BEACH	29AC 1 Thru 7, 20 Thru 27
	29AD 28,29
	29DA 30 Thru 35
	29DB 8 Thru 19
MIDWAY BEACH	5BC 1,4
	5CB 2,3
MORONEY TOWN	29CA
OCEAN LAKE PARK	5CC 7 Thru 13, 1 Thru 4, 17, 18, 19, 22
	5CD 46 Thru 53
	6DD 5, 6, 14, 15, 16
PACIFIC VIEW ESTATES	5BA
	5BD
RIDGE CREST	5BA
ROCKAWAY BEACH	32CC 51 Thru 59, A
	32CD 15 Thru 20, 50, 60 Thru 66
	32DC 1 Thru 14
	5AB 27 Thru 40
	5BA 21, 22, 23, 26, 45, 46
ROSE CITY BEACH	5CC 4 Thru 8, 12 Thru 15
	5CD 1, 2, 3, 16, 17, 18
	6DD 9, 10, 11
SEAVIEW PARK	32CA 1 Thru 14
	32CB 15 Thru 22
	32DB 23 Thru 32
TILLAMOOK BEACH	5BC 11 Thru 24
	5BD 1 Thru 10
TWIN ROCKS	5CA 1 Thru 12
	5CB 13 Thru 25
LAKE LYTLE ESTATES	29DC

--- CITY LIMITS



29 28  
32 31

1.25 IN 32 31  
T 1 IN 5 4

5 4  
8 9



**LWI**  
**MAPPING,**  
**JUNE 1993**

--- WSM CODE

Rockaway Beach

APPROVED WETLANDS INVENTORY  
Oregon Division of State Lands  
Meets LWI standards  
Date 6/94 Approved by E. Roth

WETLAND  
BOUNDARY  
APPROXIMATE

NOTE: All identified wetlands are shown.  
However, due to the large size of the  
project area and access limitations, some  
small, isolated wetlands may not be  
indicated.

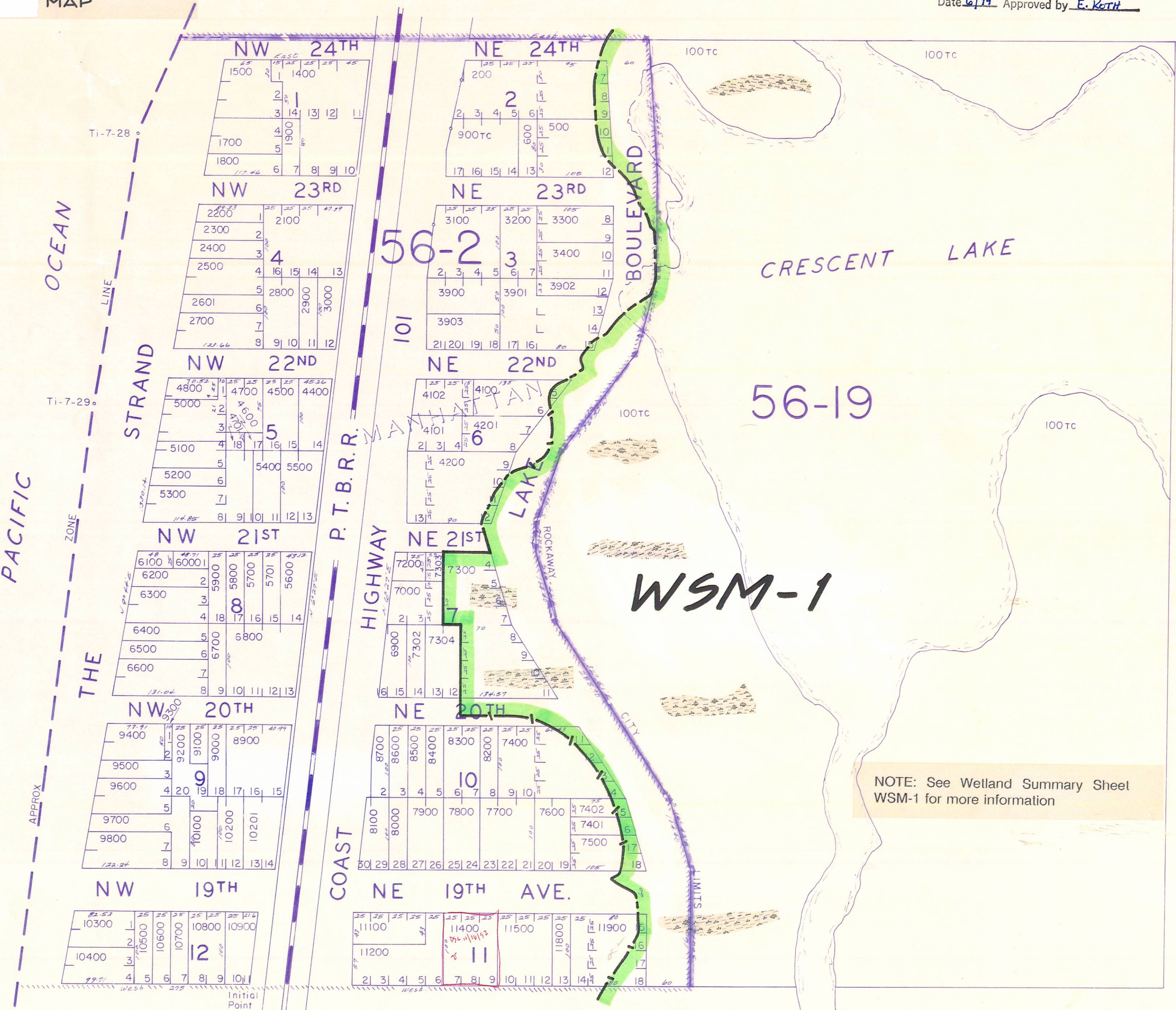
This map was prepared for  
assessment purpose only.

1"=100'

WSM, JUNE 1993  
MAP

SEE MAP 2N 10

APPROVED WETLANDS INVENTORY  
Oregon Division of State Lands  
Meets LWI standards  
Date 6/94 Approved by E. Roth



- CANCELLED
- 700
  - 800
  - 800
  - 3500
  - 3600
  - 3700
  - 3800
  - 1501
  - 2000
  - 4000
  - 4300
  - 4900
  - 7100
  - 7301
  - 8800
  - 9900
  - 10000
  - 11000
  - 11300
  - 300
  - 400
  - 1000
  - 1100
  - 1200
  - 1300
  - 1600
  - 11600
  - 11700
  - 2600

SEE MAP 2N 10 29AC

NOTE: See Wetland Summary Sheet  
WSM-1 for more information

WETLAND  
BOUNDARY  
APPROXIMATE

NOTE: All identified wetlands are shown.  
However, due to the large size of the  
project area and access limitations, some  
small, isolated wetlands may not be  
indicated.

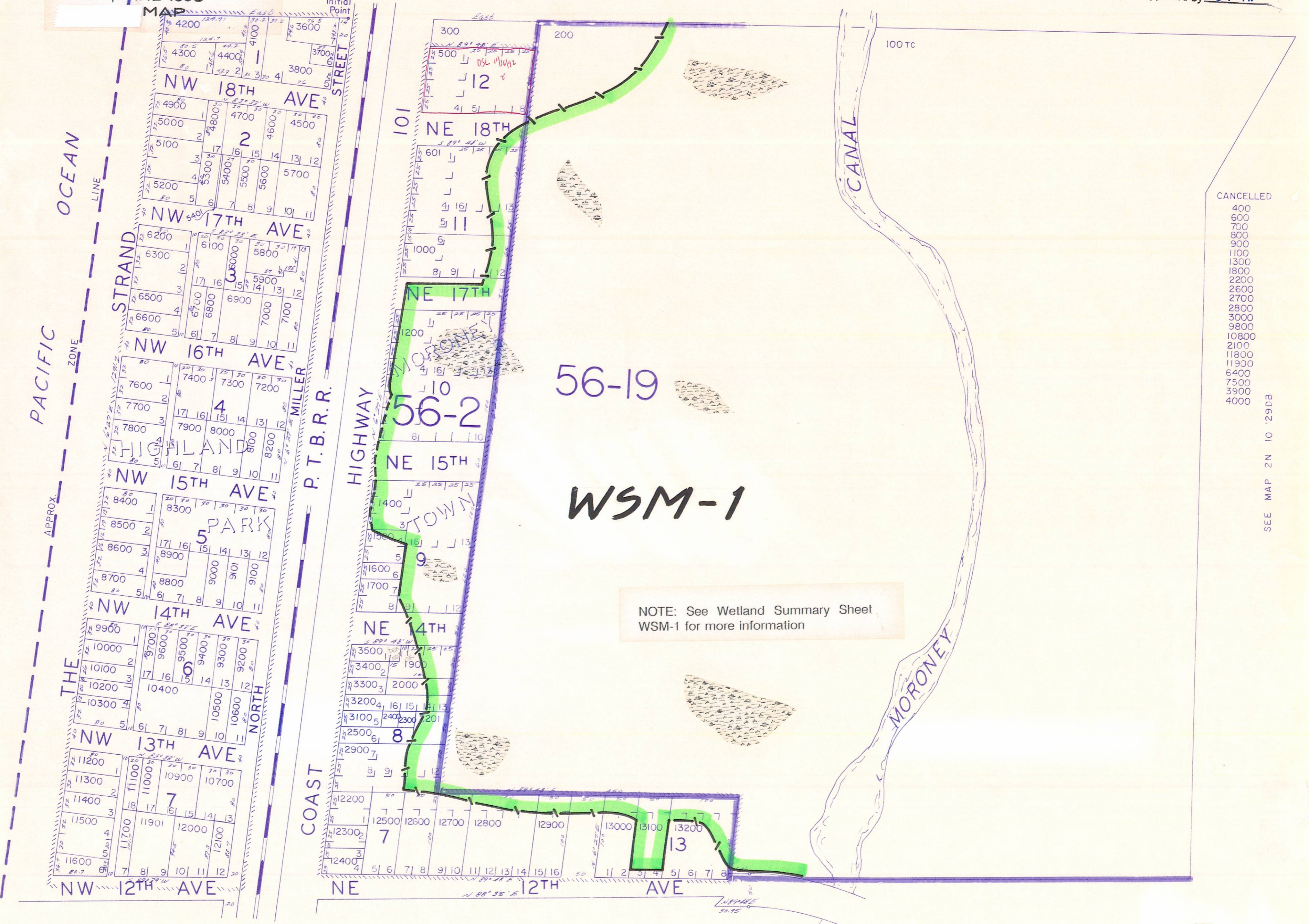
1"=100'

This map was prepared for  
assessment purpose only.

APPROVED WETLANDS INVENTORY  
Oregon Division of State Lands  
Meets LWI standards  
Date 6/94 Approved by E. Roth

SEE MAP 2N 10 29BD

WSM, JUNE 1993



- CANCELLED
- 400
  - 600
  - 700
  - 800
  - 900
  - 1100
  - 1300
  - 1800
  - 2200
  - 2600
  - 2700
  - 2800
  - 3000
  - 9800
  - 10800
  - 2100
  - 11800
  - 11900
  - 6400
  - 7500
  - 3900
  - 4000

SEE MAP 2N 10 29DB

SEE MAP 2N 10 29CC

NW1/4 SE1/4 SEC. 29 T.2N R.10W. W.M.  
TILLAMOOK COUNTY

2N 10 29DB  
MANHATTAN  
BEACH

WETLAND  
BOUNDARY  
APPROXIMATE

WSM, JUNE 1993  
MAP

NOTE: All identified wetlands are shown.  
However, due to the large size of the  
project area and access limitations, some  
small, isolated wetlands may not be  
indicated.

1" = 100'

This map was prepared for  
assessment purpose only.

SEE MAP 2N 10 29AC

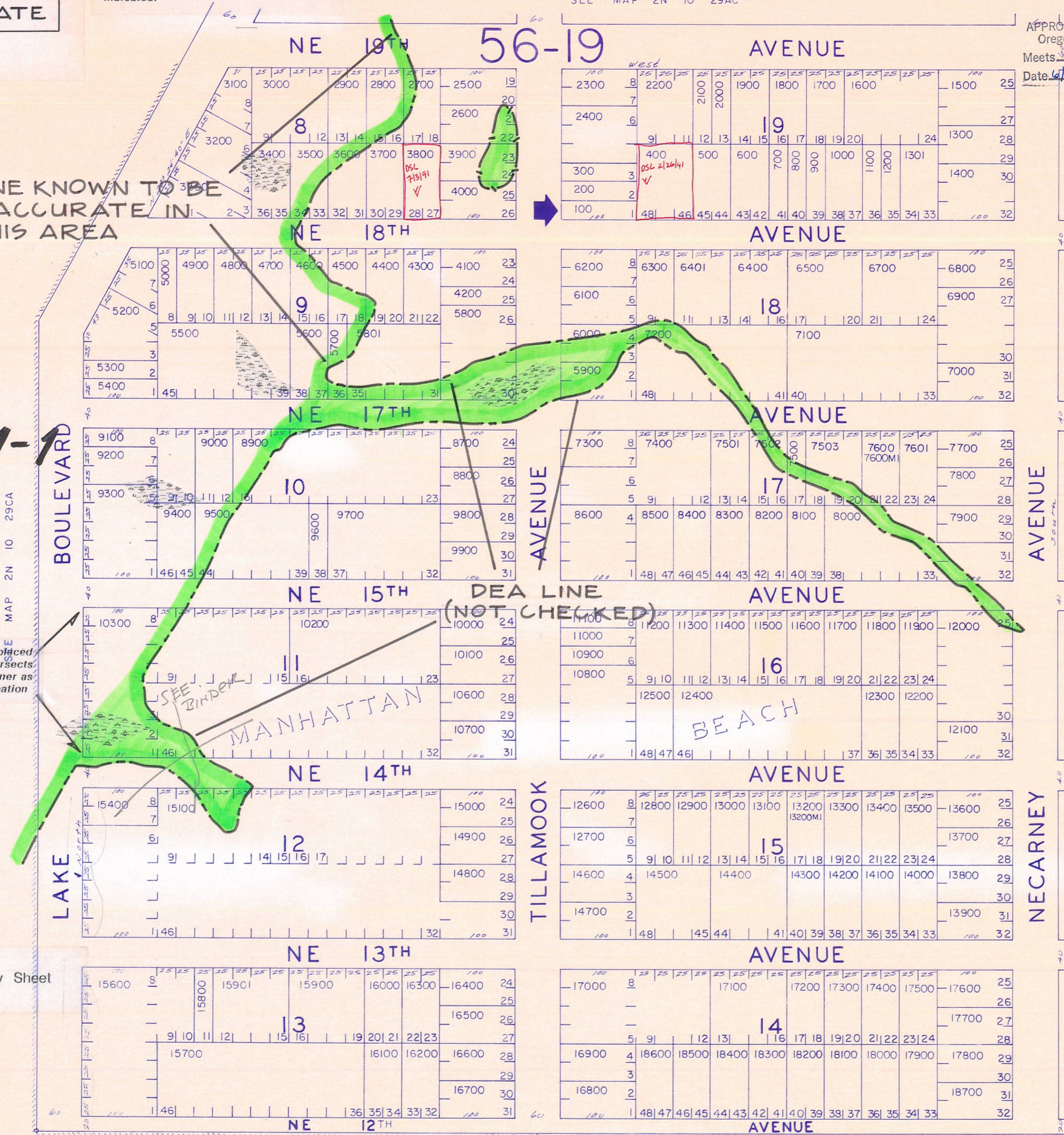
APPROVED WETLANDS INVENTORY  
Oregon Division of State Lands  
Meets LWI standards  
Date 6/94 Approved by E. Roth

LINE KNOWN TO BE  
INACCURATE IN  
THIS AREA

WSM-1

SEE MAP 2N 10 29CA

NOTE: Wetland boundary misplaced  
in this area. Boundary intersects  
NW corner of lot, not SW corner as  
shown -- area requires delineation



CANCELLED  
6600  
10500  
15300  
15500  
15200  
10400

SEE MAP 2N 10 29DA

NOTE: See Wetland Summary Sheet  
WSM-1 for more information

Initial  
Point

SEE MAP 2N 10 29DC

2N 10 29DB

4

WETLAND  
BOUNDARY  
APPROXIMATE

WSM, JUNE 1993  
MAP

NOTE: All identified wetlands are shown.  
However, due to the large size of the  
project area and access limitations, some  
small, isolated wetlands may not be  
indicated.

1" = 100'

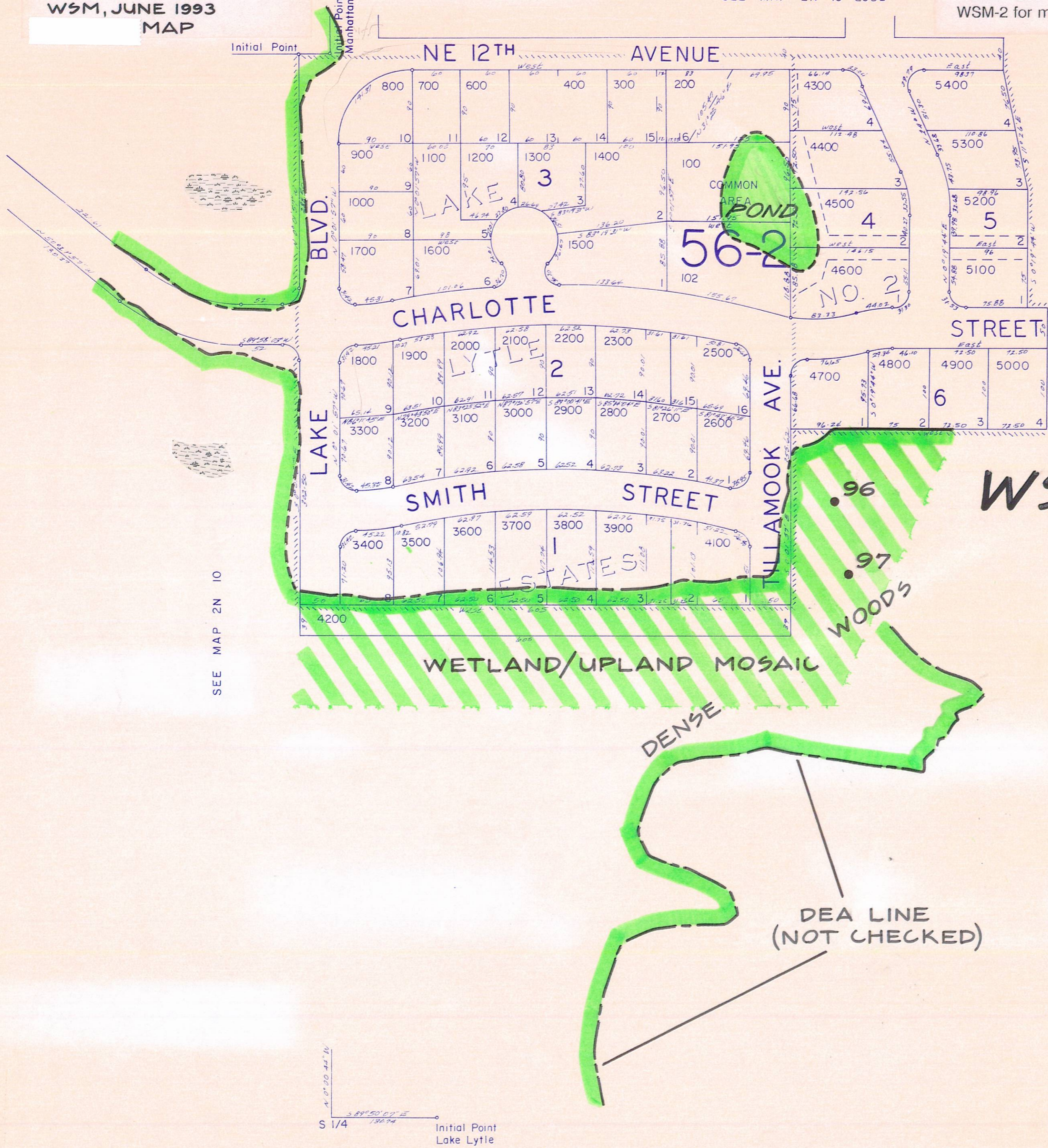
This map was prepared for  
assessment purpose only.

SEE MAP 2N 10 29DB

NOTE: See Wetland Summary Sheet  
WSM-2 for more information

APPROVED WETLANDS INVENTORY  
Oregon Division of State Lands  
Meets LWI standards  
Date 6/94 Approved by E. Roth

CANCELLED  
101  
2400  
500  
4000



NOT EVALUATED

WSM-2

SEE MAP 2N 10

SEE MAP 2N 10

S 1/4  
N 0° 00' 44" W  
S 89° 50' 01" E  
136.74  
Initial Point  
Lake Lytle

SEE MAP 2N 10 32AB

**WETLAND  
BOUNDARY  
APPROXIMATE**

WSM, JUNE 1993  
MAP

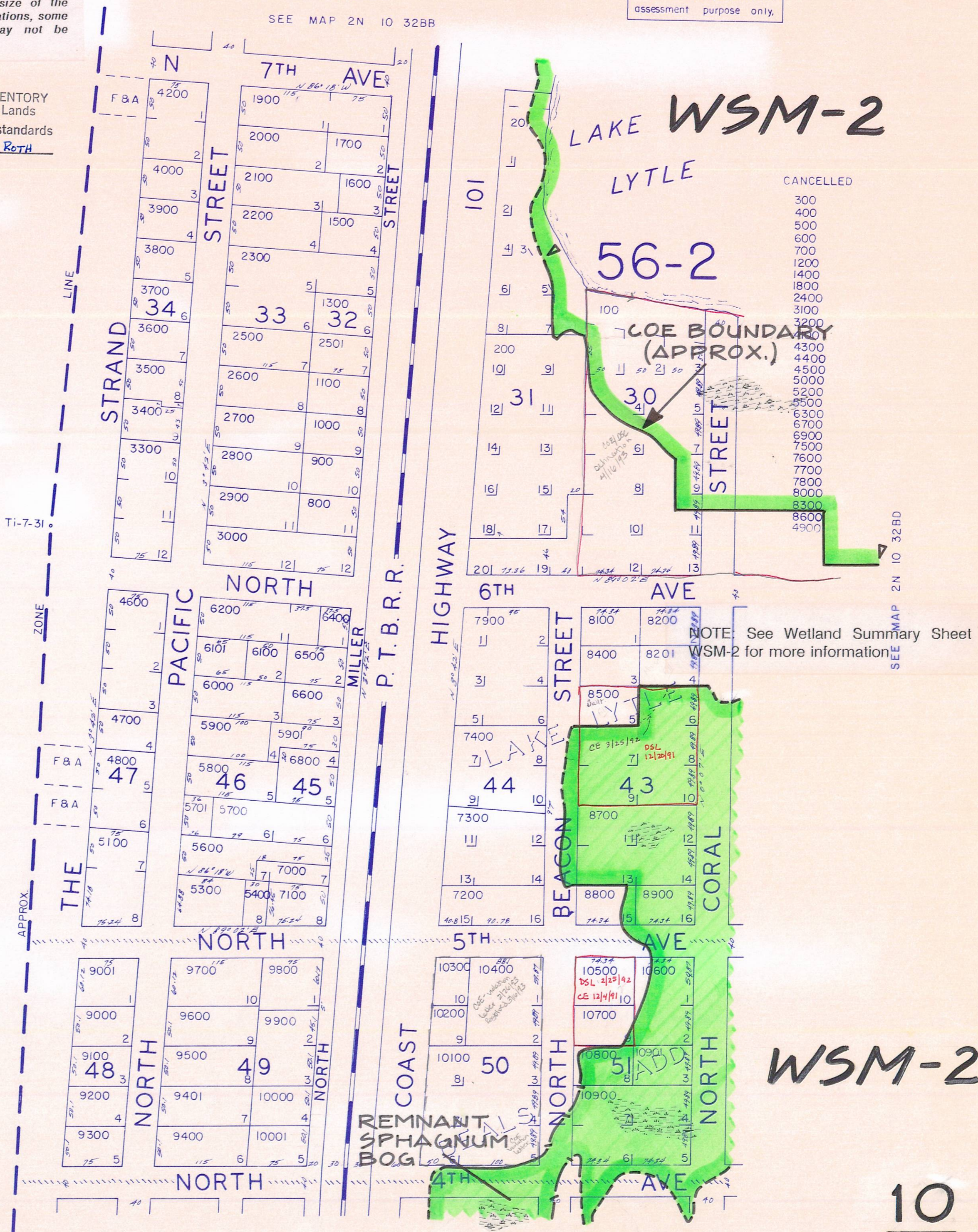
NOTE: All identified wetlands are shown.  
However, due to the large size of the  
project area and access limitations, some  
small, isolated wetlands may not be  
indicated.

APPROVED WETLANDS INVENTORY  
Oregon Division of State Lands  
Meets LWI standards  
Date 6/94 Approved by E. Roth

1"=100'

SEE MAP 2N 10 32BB

This map was prepared for  
assessment purpose only.





**WETLAND  
BOUNDARY  
APPROXIMATE**

WSM, JUNE 1993  
MAP

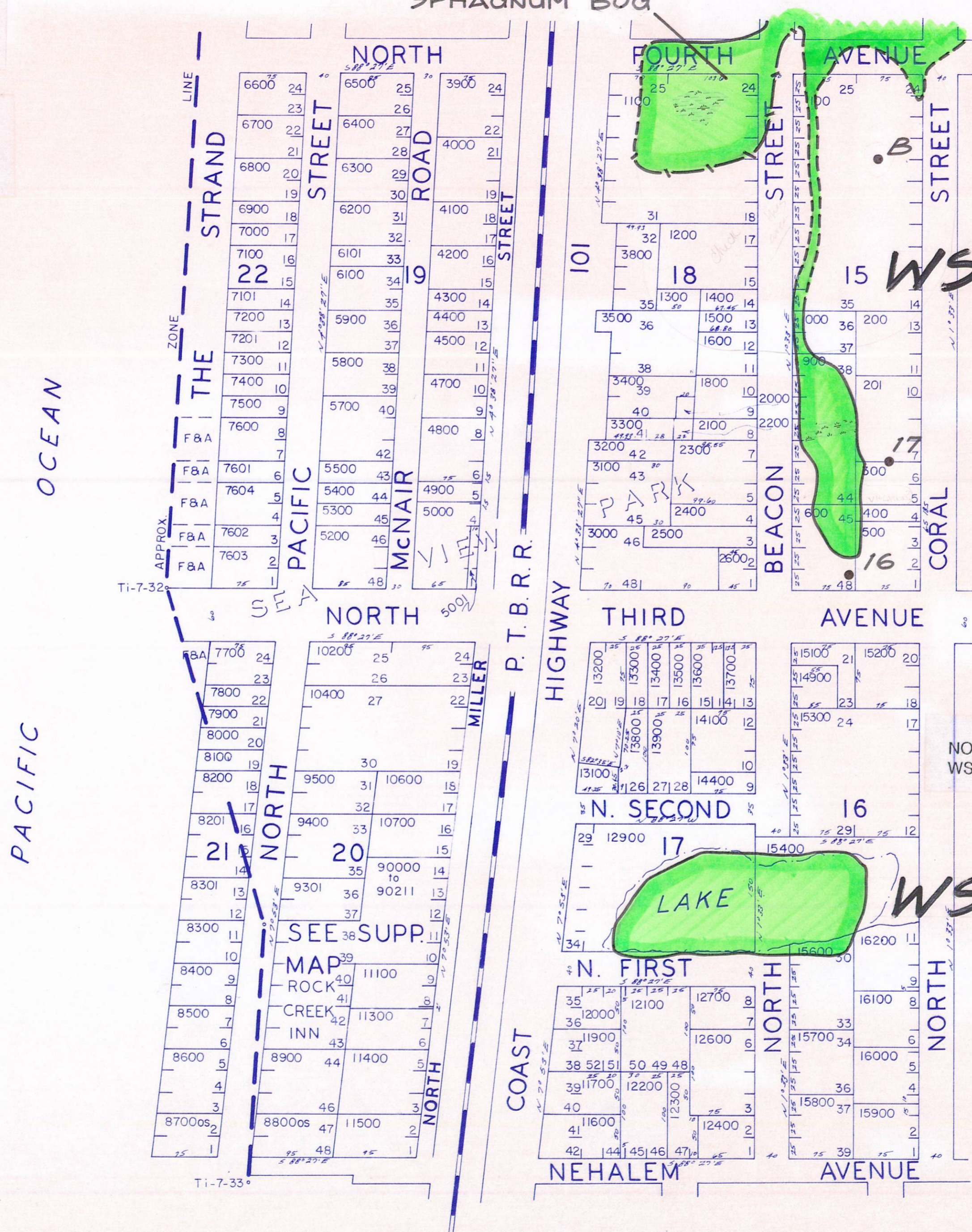
1"=100'

This map was prepared for  
assessment purpose only.

**REMNANT  
SPHAGNUM BOG**

NOTE: All identified wetlands are shown.  
However, due to the large size of the  
project area and access limitations, some  
small, isolated wetlands may not be  
indicated.

APPROVED WETLANDS INVENTORY  
Oregon Division of State Lands  
Meets LWI standards  
Date 6/94 Approved by E. ROTH



- CANCELLED
- 301
  - 700
  - 800
  - 1700
  - 2700
  - 2800
  - 2900
  - 3600
  - 3700
  - 4600
  - 4700
  - 5600
  - 6000
  - 9600
  - 9700
  - 9800
  - 9900
  - 10000
  - 10100
  - 10300
  - 10500
  - 11800
  - 12500
  - 12800
  - 13000
  - 14000
  - 14200
  - 14300
  - 14500
  - 14600
  - 14700
  - 14800
  - 15000
  - 15500
  - 9000
  - 9100
  - 9200
  - 10800
  - 10900
  - 11000
  - 11200
  - 1900
  - 9300

NOTE: See Wetland Summary Sheet  
WSM-2 and WSM-3 for more information

SEE MAP 2N 10 32CC

**WETLAND  
BOUNDARY  
APPROXIMATE**

NOTE: All identified wetlands are shown. However, due to the large size of the project area and access limitations, some small, isolated wetlands may not be indicated.

1"=100'

This map was prepared for assessment purpose only.

WSM, JUNE 1993  
MAP

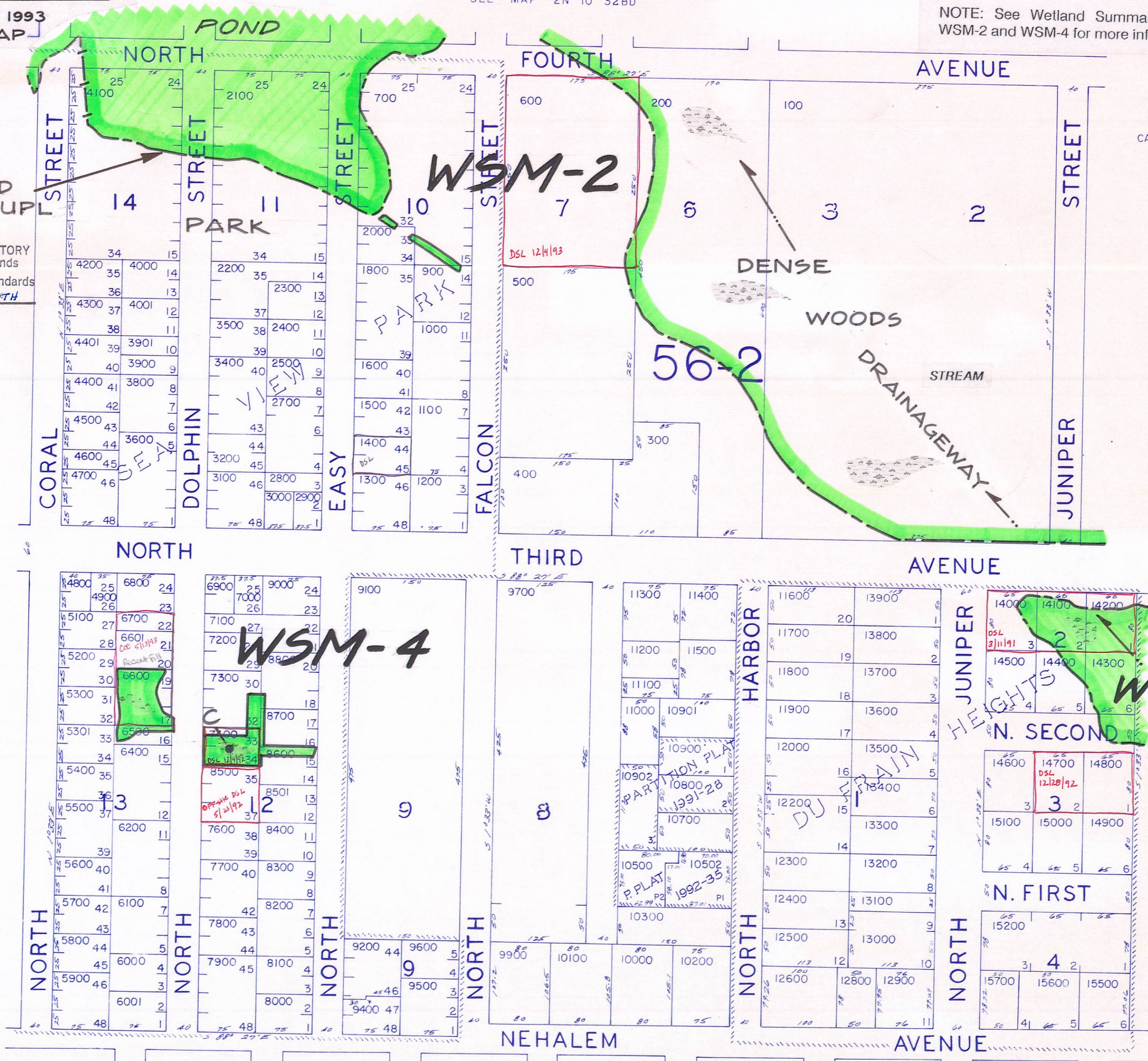
SEE MAP 2N 10 32BD

NOTE: See Wetland Summary Sheet WSM-2 and WSM-4 for more information

APPROVED WETLANDS INVENTORY  
Oregon Division of State Lands  
Meets LWI standards  
Date 6/94 Approved by E. ROTH

SEE MAP 2N 10 32CB

SEE MAP 2N 10 32DB



- CANCELLED
- 800
  - 1700
  - 1900
  - 3700
  - 5000
  - 7500
  - 6300
  - 9300
  - 10400
  - 10501
  - 10600
  - 12700
  - 15300
  - 15400
  - 3300
  - 12100
  - 9800
  - 8900
  - 2600

SEE MAP 2N 10 32CD

**WETLAND  
BOUNDARY  
APPROXIMATE**

WSM, JUNE 1993  
MAP

NOTE: All identified wetlands are shown. However, due to the large size of the project area and access limitations, some small, isolated wetlands may not be indicated.

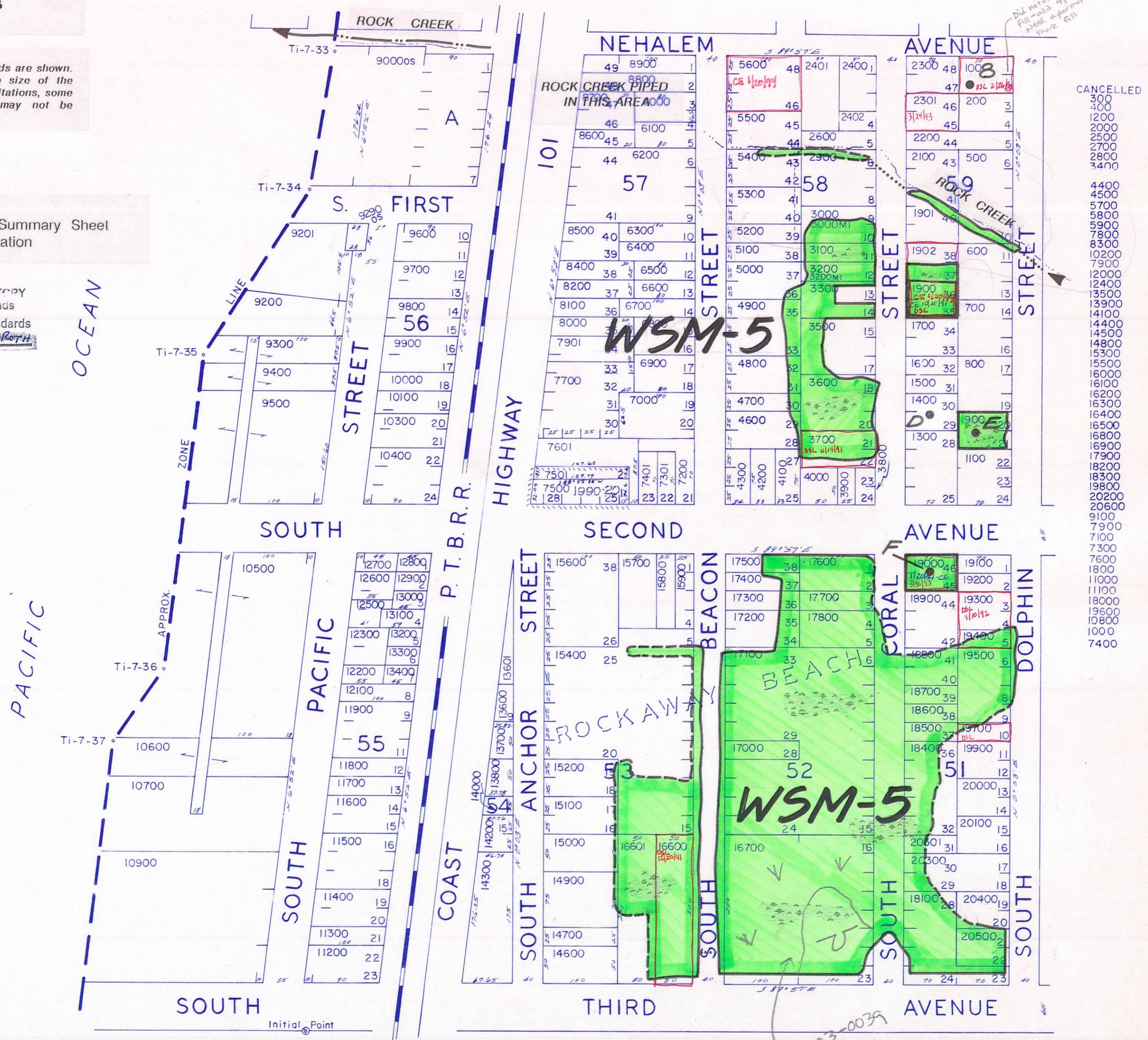
NOTE: See Wetland Summary Sheet WSM-5 for more information

APPROVED WETLANDS INVENTORY  
Oregon Division of State Lands  
Meets LWI standards  
Date 6/94 Approved by [Signature]

1"=100'

This map was prepared for  
assessment purpose only.

SEE MAP 2N 10 32CB



- CANCELLED
- 300
  - 400
  - 1200
  - 2000
  - 2500
  - 2700
  - 2800
  - 3400
  - 4400
  - 4500
  - 5700
  - 5800
  - 5900
  - 7800
  - 8300
  - 10200
  - 7900
  - 12000
  - 12400
  - 13500
  - 13900
  - 14100
  - 14400
  - 14500
  - 14800
  - 15300
  - 15500
  - 16000
  - 16100
  - 16200
  - 16300
  - 16400
  - 16500
  - 16800
  - 16900
  - 17900
  - 18200
  - 18300
  - 19800
  - 20200
  - 20600
  - 9100
  - 7900
  - 7100
  - 7300
  - 7600
  - 1800
  - 11000
  - 11100
  - 18000
  - 19600
  - 10800
  - 1000
  - 7400

SEE MAP 2N 10 32CD

See WD2003-0039

SEE MAP IN 10 5BB

WETLAND  
BOUNDARY  
APPROXIMATE

1"=100'

This map was prepared for  
assessment purpose only.

WSM, JUNE 1993  
MAP

SEE MAP 2N 10 32CA

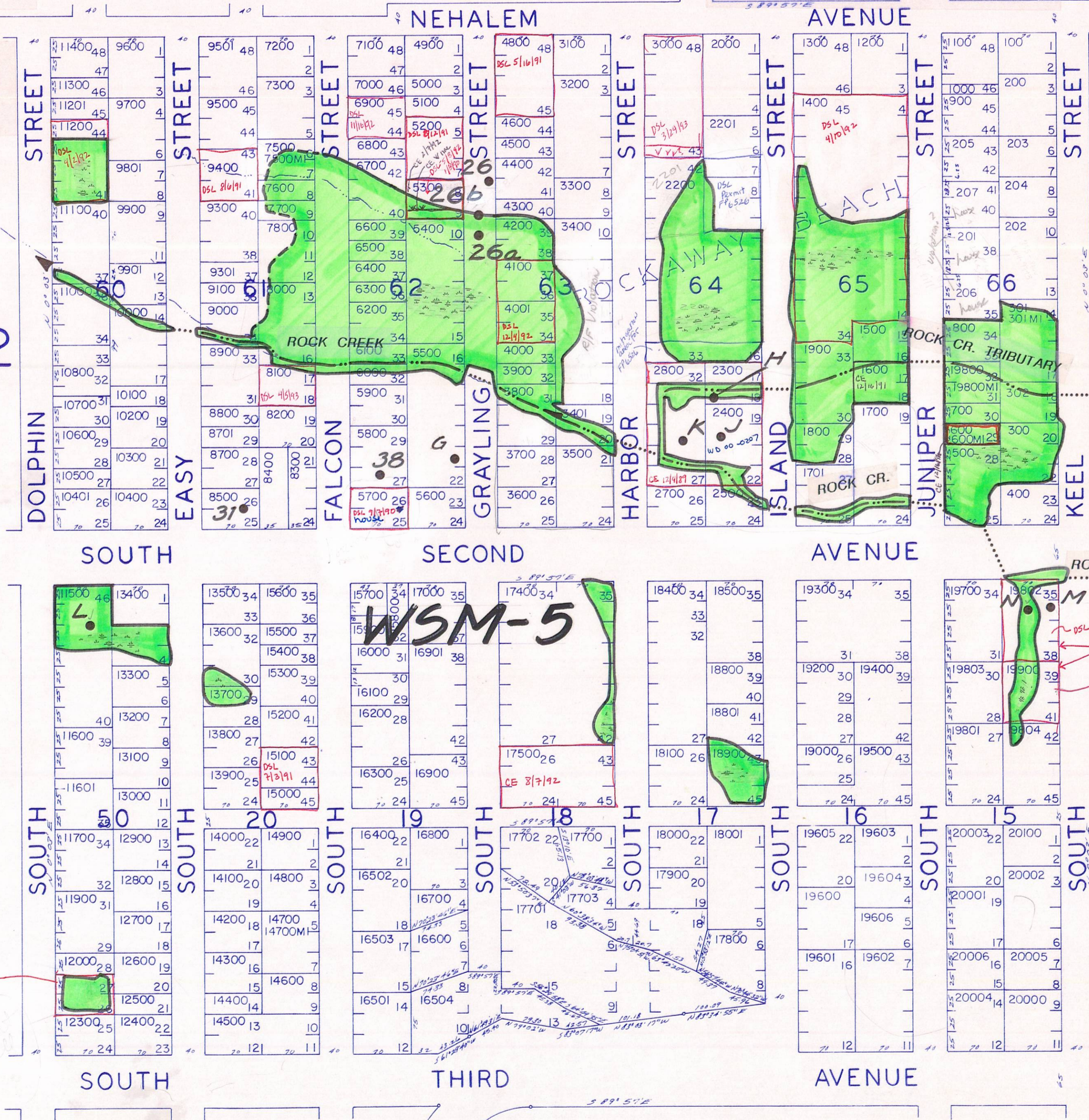
NOTE: See Wetland Summary Sheet  
WSM-5 for more information

NOTE: All identified wetlands are shown.  
However, due to the large size of the  
project area and access limitations, some  
small, isolated wetlands may not be  
indicated.

APPROVED WETLANDS INVENTORY  
Oregon Division of State Lands  
Meets LWT standards  
Date 6/94 Approved by E. Roth

56-2

SEE MAP 2N 10 32CC



CANCELLED

2100  
2600  
2900  
4700  
7400  
8600  
9800  
11800  
16500  
17100  
17200  
17300  
17600  
18101  
18600  
18700  
19001  
19201  
18300  
18200  
18102  
17801  
16001  
10900  
7900  
9200  
19100  
12100  
12200

SEE MAP 2N 10 32DC

WETLAND  
BOUNDARY  
APPROXIMATE

NOTE: All identified wetlands are shown.  
However, due to the large size of the  
project area and access limitations, some  
small, isolated wetlands may not be  
indicated.

1"=100'

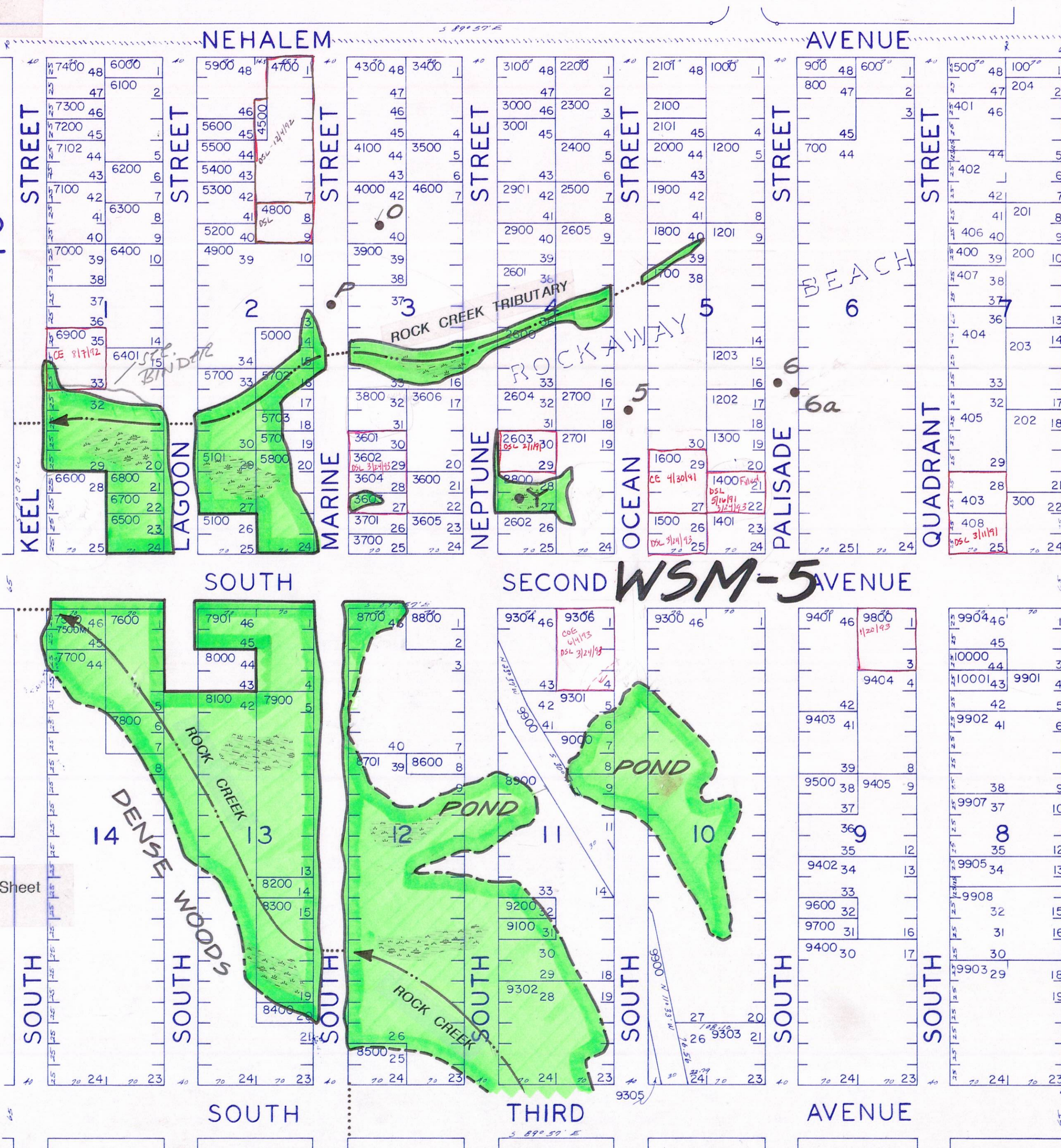
This map was prepared for  
assessment purpose only.

WSM, JUNE 1993  
MAP

SEE MAP 2N 10 32DB

APPROVED WETLANDS INVENTORY  
Oregon Division of State Lands  
Meets LWI standards  
Date 6/94 Approved by E. ROTH

56-2



CANCELLED

- 1100
- 3200
- 3300
- 9906
- 9909
- 10100
- 4200
- 4400
- 7101

SEE MAP 2N 10 32CD

SEE MAP 2N 10

NOTE: See Wetland Summary Sheet  
WSM-5 for more information

SEE MAP IN 10 5AB

**WETLAND  
BOUNDARY  
APPROXIMATE**

NOTE: All identified wetlands are shown. However, due to the large size of the project area and access limitations, some small, isolated wetlands may not be indicated.

1"=100'

This map was prepared for assessment purpose only.

WSM, JUNE 1993  
MAP

SEE MAP 2N 10 32CC

APPROVED WETLANDS INVENTORY  
Oregon Division of State Lands  
Meets LWI standards  
Date 6/94 Approved by E. ROTH

Ti-7-38

LINE

OCEAN

ZONE

PACIFIC

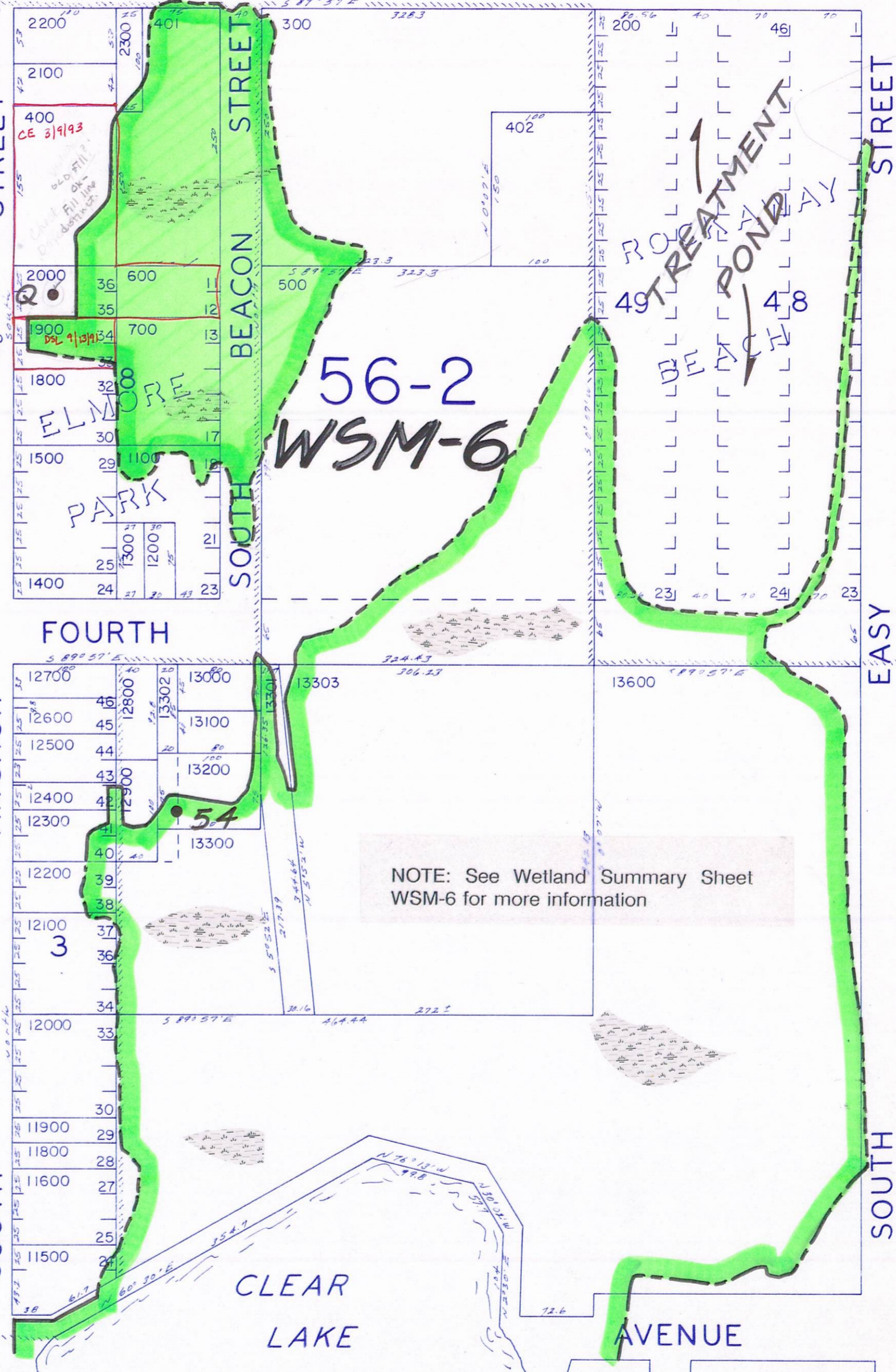
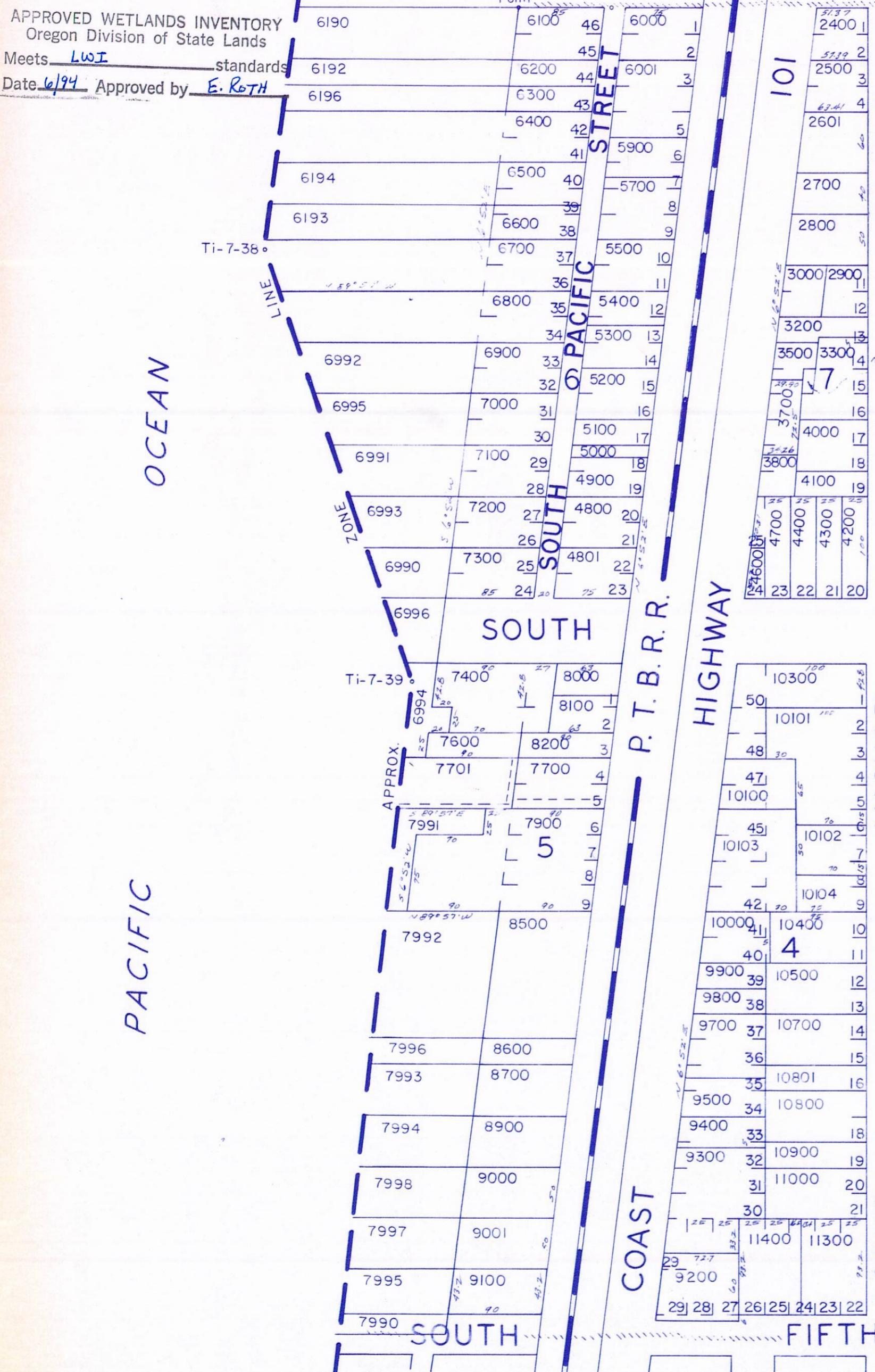
Ti-7-40

M.C. Initial Point

SOUTH

THIRD

AVENUE



- CANCELLED
- 100
- 800
- 900
- 1000
- 1600
- 1700
- 3600
- 3900
- 4500
- 5600
- 5800
- 7800
- 8300
- 8400
- 8800
- 9600
- 10200
- 10600
- 1100
- 11200
- 11700
- 13400
- 13500
- 3100
- 7500
- 6195
- 6191

SEE MAP IN 10 5BA

NOTE: See Wetland Summary Sheet  
WSM-6 for more information

SEE MAP IN 10 5BC

**WETLAND  
BOUNDARY  
APPROXIMATE**

NOTE: All identified wetlands are shown. However, due to the large size of the project area and access limitations, some small, isolated wetlands may not be indicated.

1"=100'

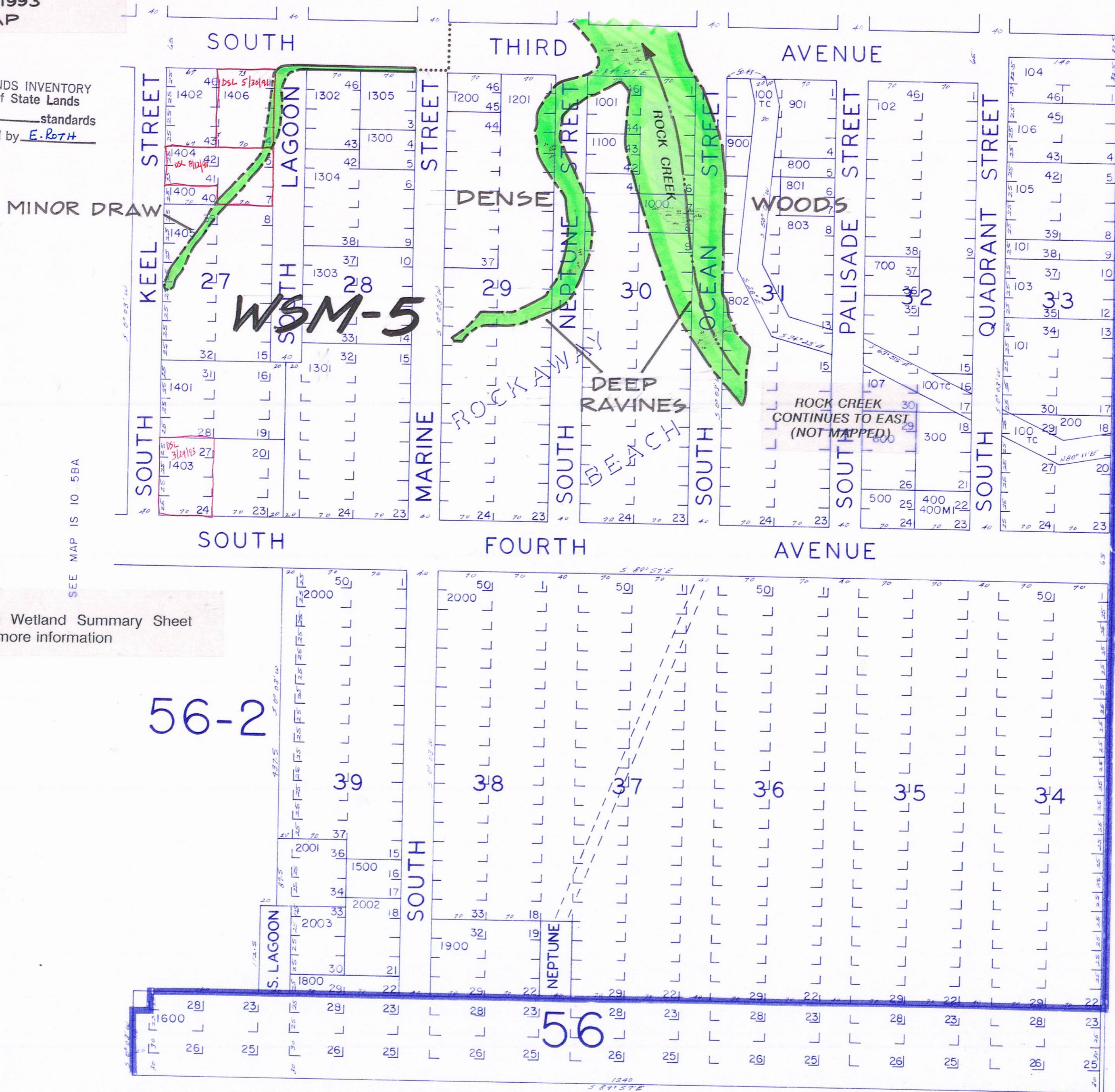
This map was prepared for  
assessment purpose only.

WSM, JUNE 1993  
MAP

SEE MAP 2N 10 32DC

APPROVED WETLANDS INVENTORY  
Oregon Division of State Lands  
Meets LWI standards  
Date 6/94 Approved by E. ROTH

CANCELLED  
1700



SEE MAP IS 10 5BA

SEE MAP IS 10

NOTE: See Wetland Summary Sheet  
WSM-5 for more information

56-2

56

SEE MAP IS 10

**WETLAND  
BOUNDARY  
APPROXIMATE**

NOTE: All identified wetlands are shown. However, due to the large size of the project area and access limitations, some small, isolated wetlands may not be indicated.

WSM, JUNE 1993  
MAP

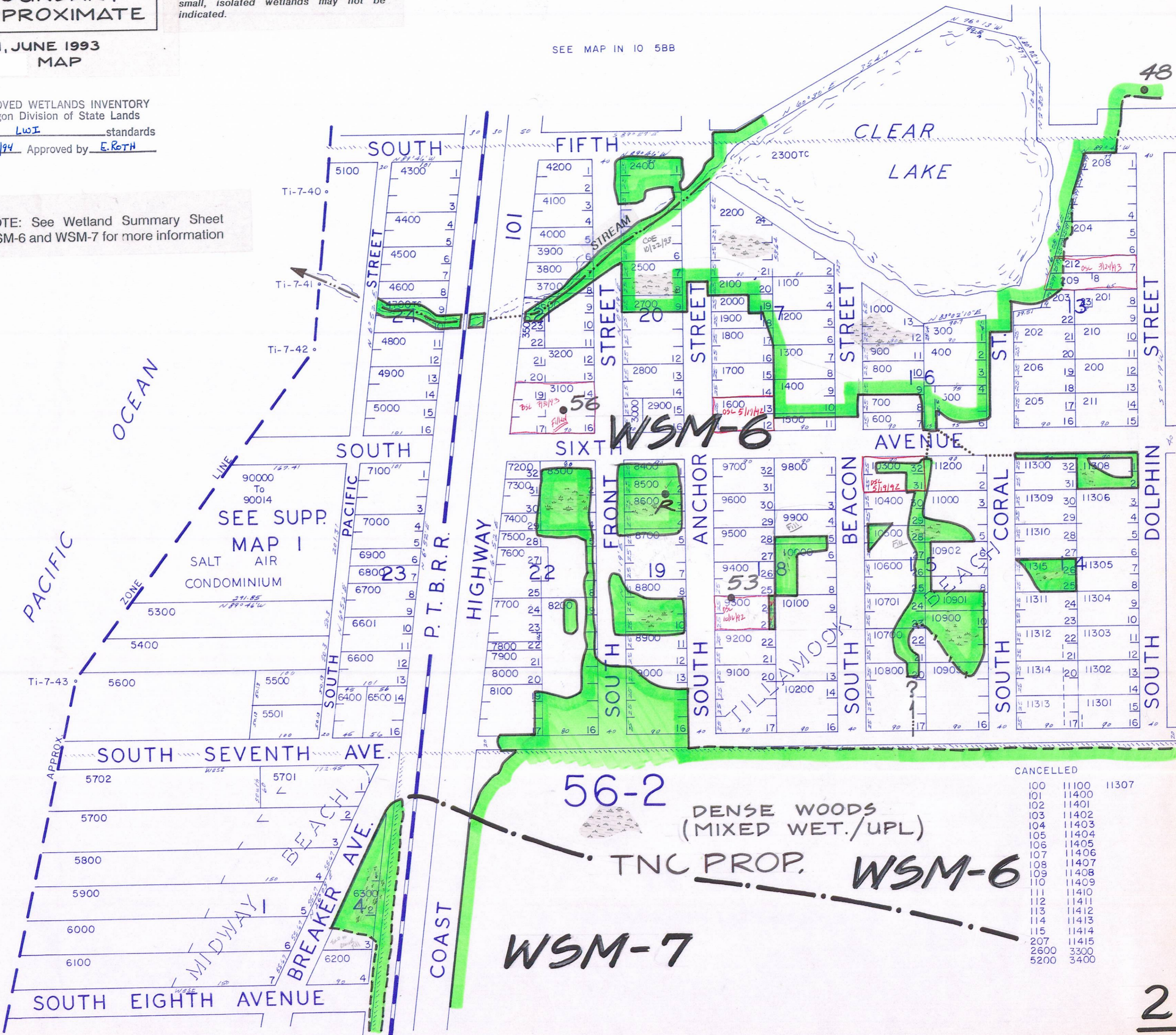
1" = 100'

This map was prepared for  
assessment purpose only.

APPROVED WETLANDS INVENTORY  
Oregon Division of State Lands  
Meets LWI standards  
Date 6/94 Approved by E. ROTH

NOTE: See Wetland Summary Sheet  
WSM-6 and WSM-7 for more information

SEE MAP IN 10 5BB



CANCELLED

100	11100	11307
101	11400	
102	11401	
103	11402	
104	11403	
105	11404	
106	11405	
107	11406	
108	11407	
109	11408	
110	11409	
111	11410	
112	11411	
113	11412	
114	11413	
115	11414	
207	11415	
2600	3300	
5200	3400	

56-2  
DENSE WOODS  
(MIXED WET./UPL)  
TNC PROP. **WSM-6**  
**WSM-7**

SEE MAP IN 10 5BD

**WETLAND  
BOUNDARY  
APPROXIMATE**

NOTE: All identified wetlands are shown. However, due to the large size of the project area and access limitations, some small, isolated wetlands may not be indicated.

WSM, JUNE 1993  
MAP

This map was prepared for  
assessment purpose only.

1"=100'

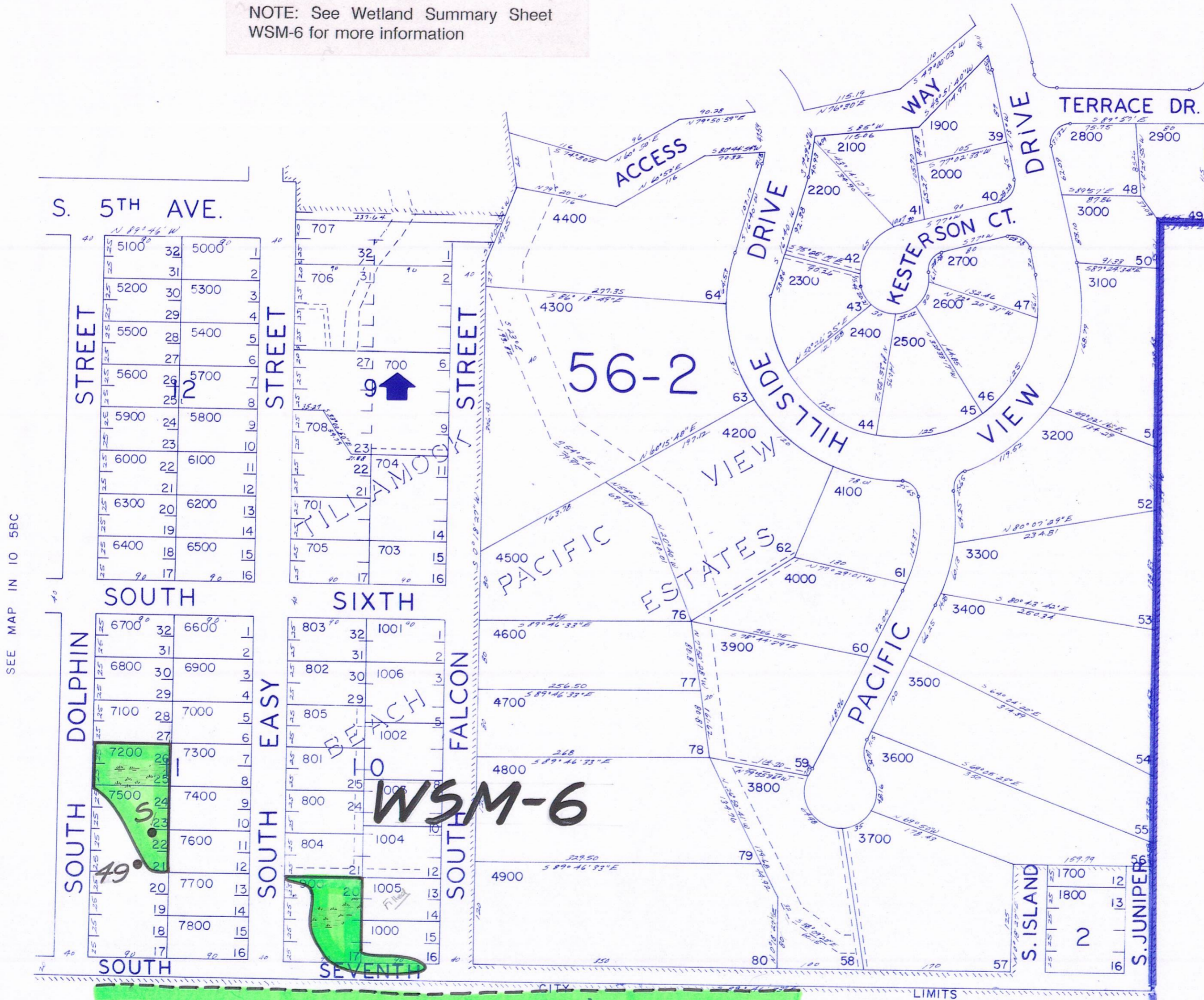
APPROVED WETLANDS INVENTORY  
Oregon Division of State Lands  
Meets LWI standards  
Date 6/94 Approved by E. Roth

SEE MAP IN 10 5BA

NOTE: See Wetland Summary Sheet  
WSM-6 for more information

CANCELLED

- 100
- 200
- 300
- 400
- 500
- 600
- 1100
- 1200
- 1300
- 1400
- 1500
- 1600
- 702



SEE MAP IN 10

SEE MAP IN 10 5BC

DENSE WOODS (MIXED WET./UPL)  
TNC PROP.

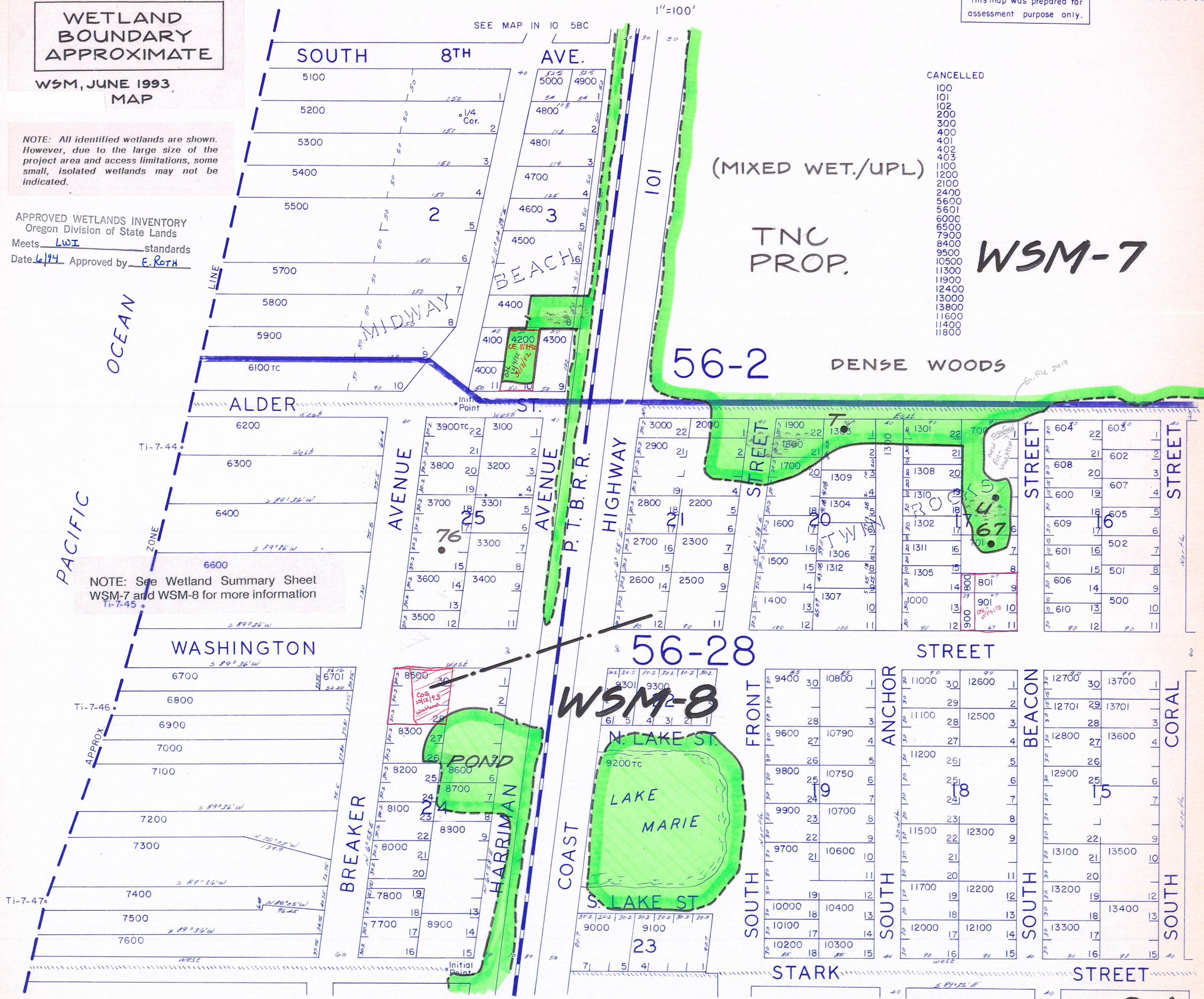
SEE MAP IN 10

**WETLAND  
BOUNDARY  
APPROXIMATE**  
WSM, JUNE 1993  
MAP

This map was prepared for  
assessment purpose only.

NOTE: All identified wetlands are shown.  
However, due to the large size of the  
project area and access limitations, some  
small, isolated wetlands may not be  
indicated.

APPROVED WETLANDS INVENTORY  
Oregon Division of State Lands  
Meets LWI standards  
Date 6/94 Approved by E. ROTH



- CANCELLED
- 100
  - 101
  - 102
  - 200
  - 300
  - 400
  - 401
  - 402
  - 403
  - 1100
  - 1200
  - 2100
  - 2400
  - 5600
  - 5601
  - 6000
  - 6500
  - 7900
  - 8400
  - 9500
  - 10500
  - 11300
  - 11900
  - 12400
  - 13000
  - 13800
  - 1600
  - 11400
  - 11800

**WSM-7**

NOTE: See Wetland Summary Sheet  
WSM-7 and WSM-8 for more information  
Ti-7-45

**WSM-8**

SEE MAP IN 10 5CA

**WETLAND  
BOUNDARY  
APPROXIMATE**

WSM, JUNE 1993  
MAP

NOTE: All identified wetlands are shown.  
However, due to the large size of the  
project area and access limitations, some  
small, isolated wetlands may not be  
indicated.

1" = 100'

This map was prepared for  
assessment purpose only.

APPROVED WETLANDS INVENTORY  
Oregon Division of State Lands  
Meets LWI standards  
Date 6/97 Approved by E. ROTH

NOTE: See Wetland Summary Sheet  
WSM-7 for more information

**TNC PROP.**

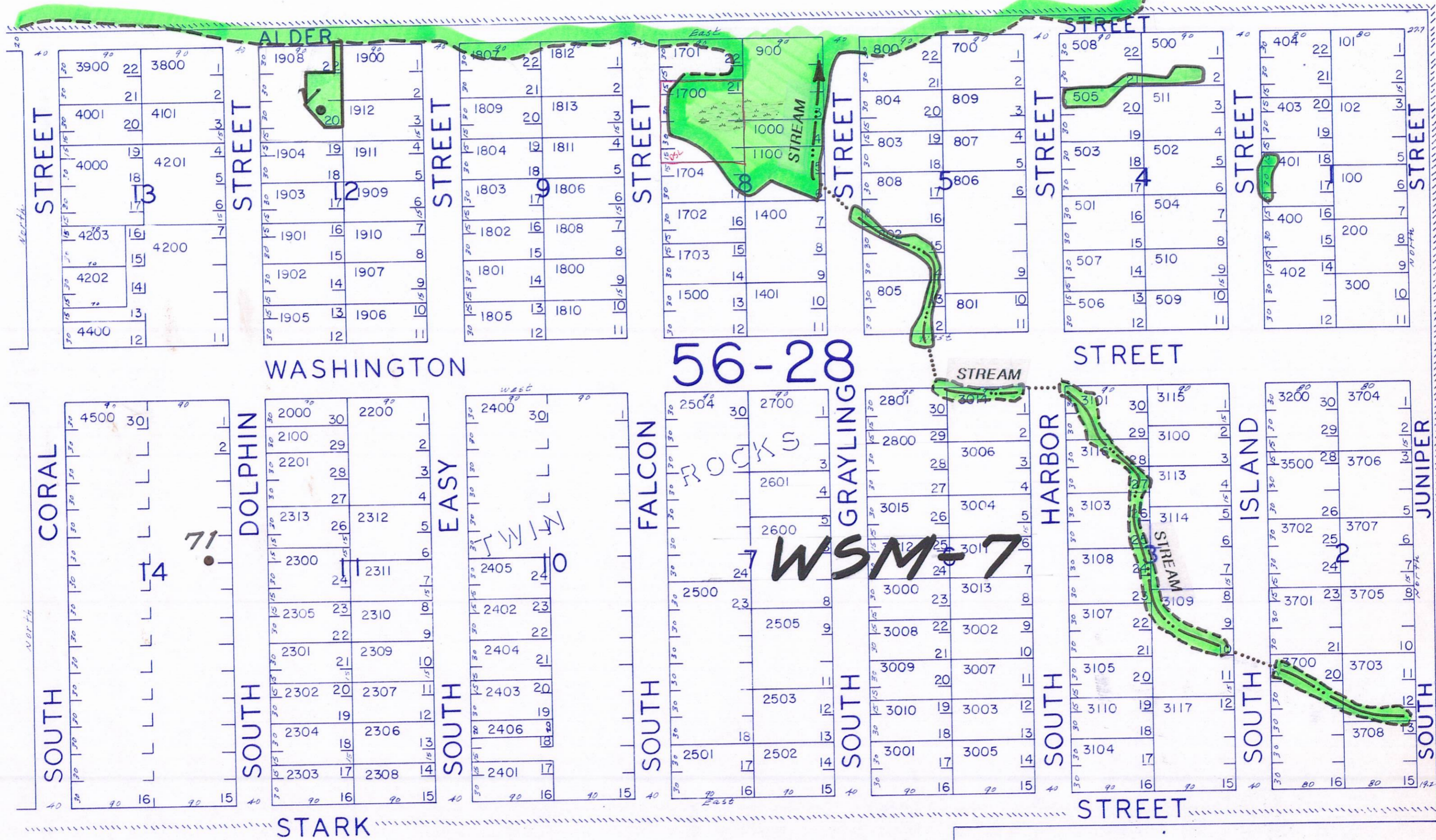
SEE MAP IN 10

DENSE

WOODS

CANCELLED

- 600
- 2900
- 3102
- 3106
- 3300
- 3400
- 3401
- 3600
- 1200
- 4100
- 1300
- 1301
- 1600
- 4300
- 3112
- 3111



SEE MAP IN 10 5CB

SEE MAP IN 10

SEE MAP IN 10 5CD

This map was prepared for  
assessment purpose only.

1"=100'

SEE MAP IN 10 5CB

**WETLAND  
BOUNDARY  
APPROXIMATE**

WSM, JUNE 1993  
MAP

NOTE: All identified wetlands are shown.  
However, due to the large size of the  
project area and access limitations, some  
small, isolated wetlands may not be  
indicated.

APPROVED WETLANDS INVENTORY  
Oregon Division of State Lands  
Meets LWI standards  
Date 4/94 Approved by E. ROTH

OCEAN

PACIFIC

NOTE: See Wetland Summary Sheet  
WSM-8 for more information



CANCELLED  
1000  
1400  
2600  
2900  
3900  
4900  
4400

**WSM-8**

SEE MAP IN 10 5CC

SEE MAP IN 10 7AA



SE 1/4 SW 1/4 SEC. 5 T.1N. R.10W. W.M.  
TILLAMOOK COUNTY

This map was prepared for  
assessment purpose only.

1"=100'

SEE MAP IN 10 5CA

**WETLAND  
BOUNDARY  
APPROXIMATE**

NOTE: All identified wetlands are shown.  
However, due to the large size of the  
project area and access limitations, some  
small, isolated wetlands may not be  
indicated.

WSM, JUNE 1993  
MAP

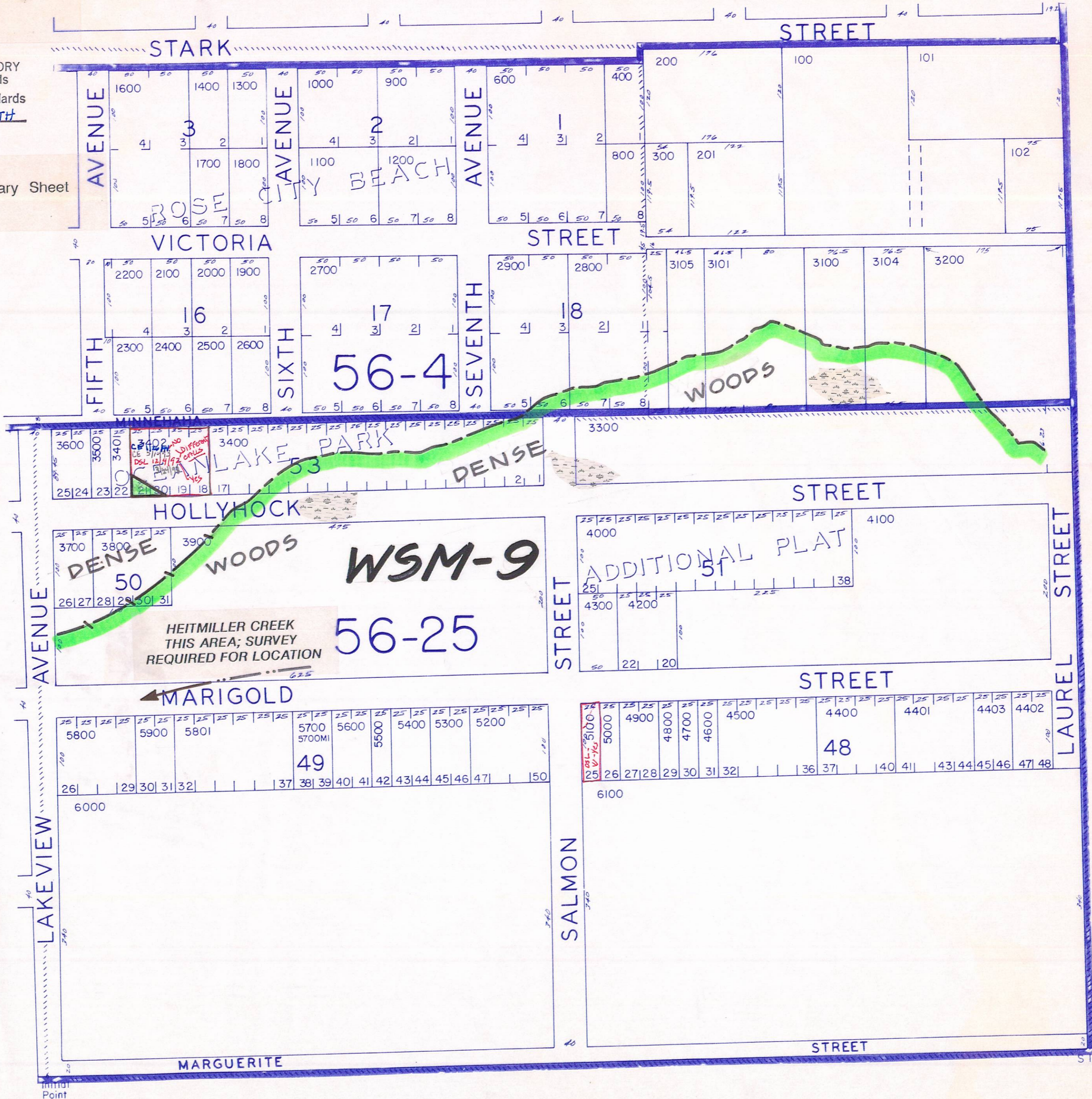
APPROVED WETLANDS INVENTORY  
Oregon Division of State Lands  
Meets LSI standards  
Date 6/94 Approved by E. ROTH

NOTE: See Wetland Summary Sheet  
WSM-9 for more information

CANCELLED  
500  
700  
3000  
3103  
1500  
3102

SEE MAP IN 10 5CC

SEE MAP IN 10



SEE MAP IN 10 8