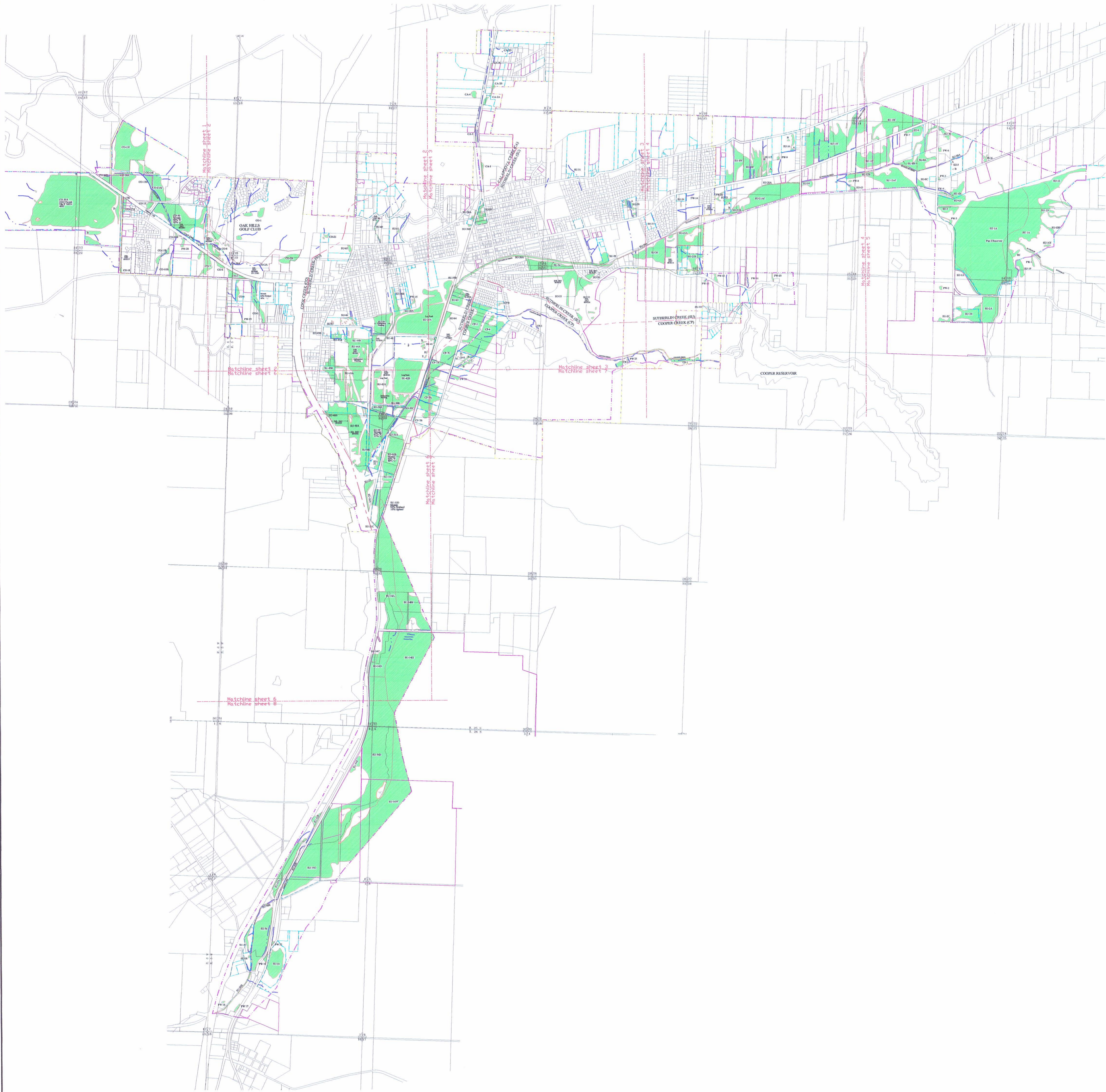


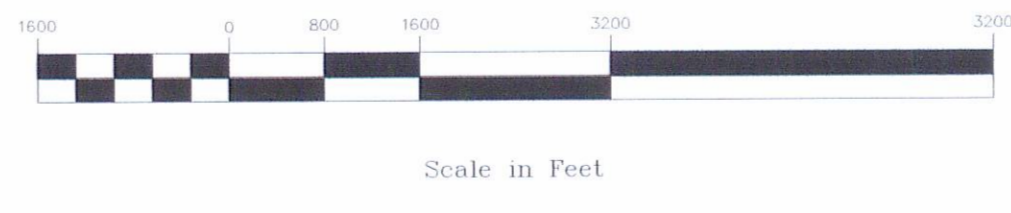
SUTHERLIN



APPROVED WETLANDS INVENTORY
 Oregon Division of State Lands
 Meets EW1 standards
 Date 1/9/01 Approved by Dave Field



GRAPHIC SCALE



Watershed Boundary	--- -- --	On-Site Determination	--- -- --
Project Boundary	--- -- --	Access Denied	--- -- --
Drainage	--- -- --	Potentially Jurisdictional Wetland	--- -- --
Sutherlin City Limits	--- -- --	Probable Wetland (off-site) PW	--- -- --
Sample Point	58	Wetland Code	SU-1

Funding for this project was provided by a grant from the Oregon Division of State Lands, Wetlands Planning Assistance grant program. This grant program is supported by a grant from the U.S. Environmental Protection Agency under authority of the Clean Water Act.

THIS MAP IS FOR PLANNING PURPOSES ONLY
 WETLAND BOUNDARIES ARE APPROXIMATE
 AND SUBJECT TO CHANGE

This map has NOT been approved by the wetland regulatory agencies for permitting purposes. You are advised to contact the Oregon Division of State Lands and the U.S. Army Corps of Engineers with any regulatory questions. There may be additional wetlands within the study area that have not been identified. All wetlands, whether mapped or not, are subject to Federal and State permit requirements. There may also be areas of non-wetland within areas identified as wetlands on this map. In all cases, Federal and State agencies will use actual field conditions, rather than this map, to determine wetland boundaries.

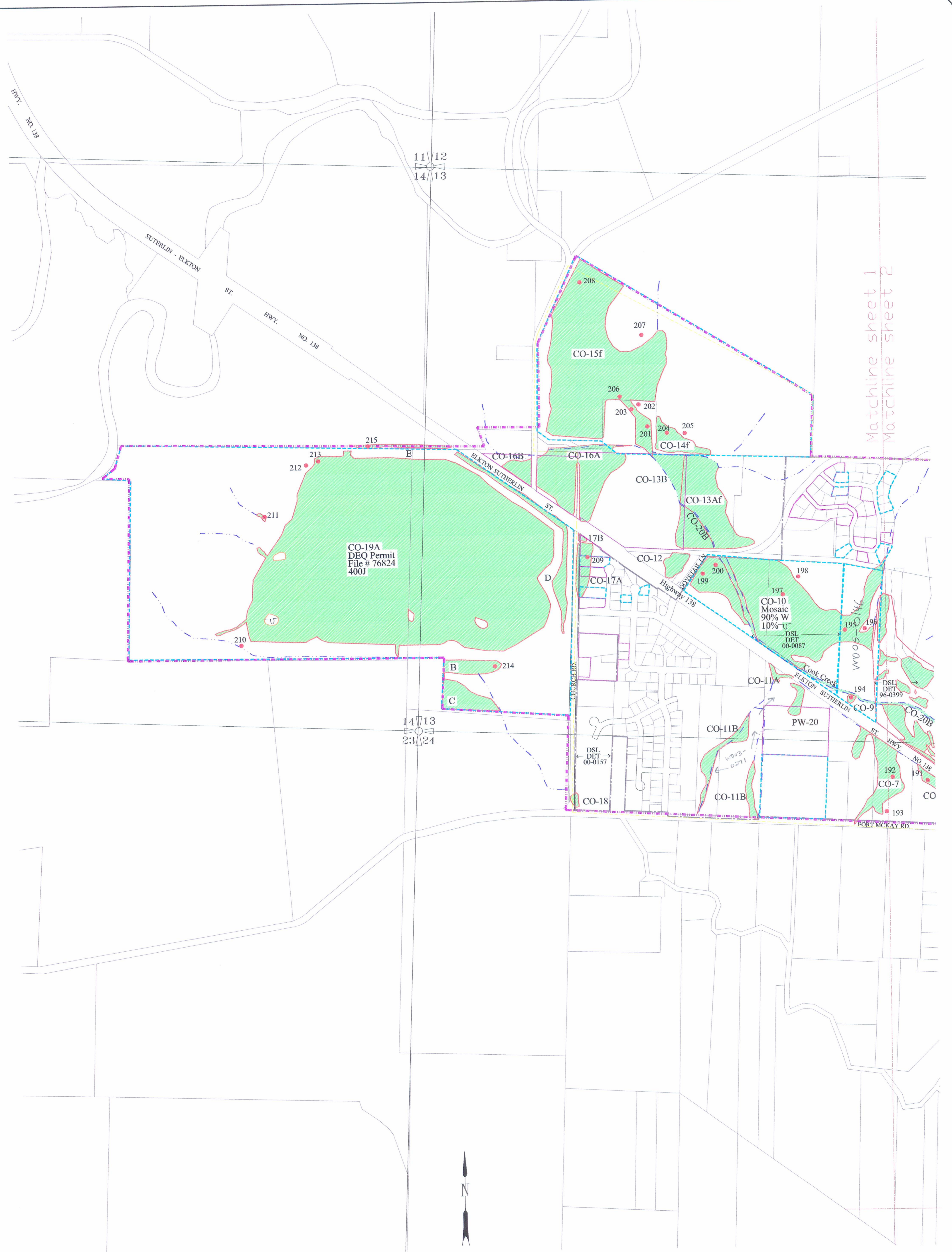
DATE: March, 2001
 BASE MAP INFO: Supplied by City of Sutherlin,
Umpqua/Rogue Council of Govt.
and Douglas County
 JOB NO.: 2143

Sutherlin

Local Wetlands Inventory

Pacific Habitat Services, Inc.
 9450 SW Commerce Circle, Suite 180
 Wilsonville, Oregon 97070
 Phone: (503) 570-0800

Reference
 Sheet:



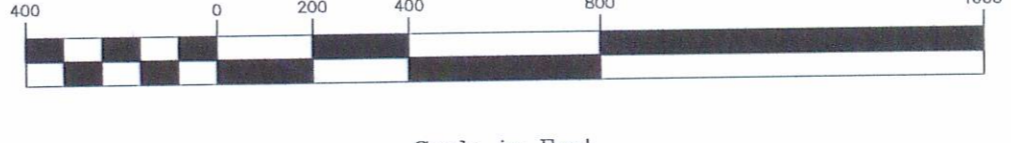
Matchline sheet 1
Matchline sheet 2

11/12
14/13

14/13
23/24



GRAPHIC SCALE



Scale in Feet

Funding for this project was provided by a grant from the Oregon Division of State Lands, Wetlands Planning Assistance grant program. This grant program is supported by a grant from the U.S. Environmental Protection Agency under authority of the Clean Water Act.

THIS MAP IS FOR PLANNING PURPOSES ONLY
WETLAND BOUNDARIES ARE APPROXIMATE
AND SUBJECT TO CHANGE

This map has NOT been approved by the wetland regulatory agencies for permitting purposes. You are advised to contact the Oregon Division of State Lands and the U.S. Army Corps of Engineers with any regulatory questions. There may be additional wetlands within the study area that have not been identified. All wetlands, whether mapped or not, are subject to Federal and State permit requirements. There may also be areas of non-wetland within areas identified as wetlands on this map. In all cases, Federal and State agencies will use actual field conditions, rather than this map, to determine wetland boundaries.

Watershed Boundary	On-Site Determination	Access Denied
Project Boundary	Access Denied	Access Denied
Drainage	Potentially Jurisdictional Wetland	Potentially Jurisdictional Wetland
Sutherlin City Limits	Potentially Jurisdictional Wetland	Potentially Jurisdictional Wetland
Sample Point	Probable Wetland (off-site) PW	Wetland Code SU-1

DATE: May, 2001
 BASE MAP INFO: Supplied by City of Sutherlin,
 : Umpqua/Rogue Council of Govt.
 : and Douglas County
 JOB NO.: 2143

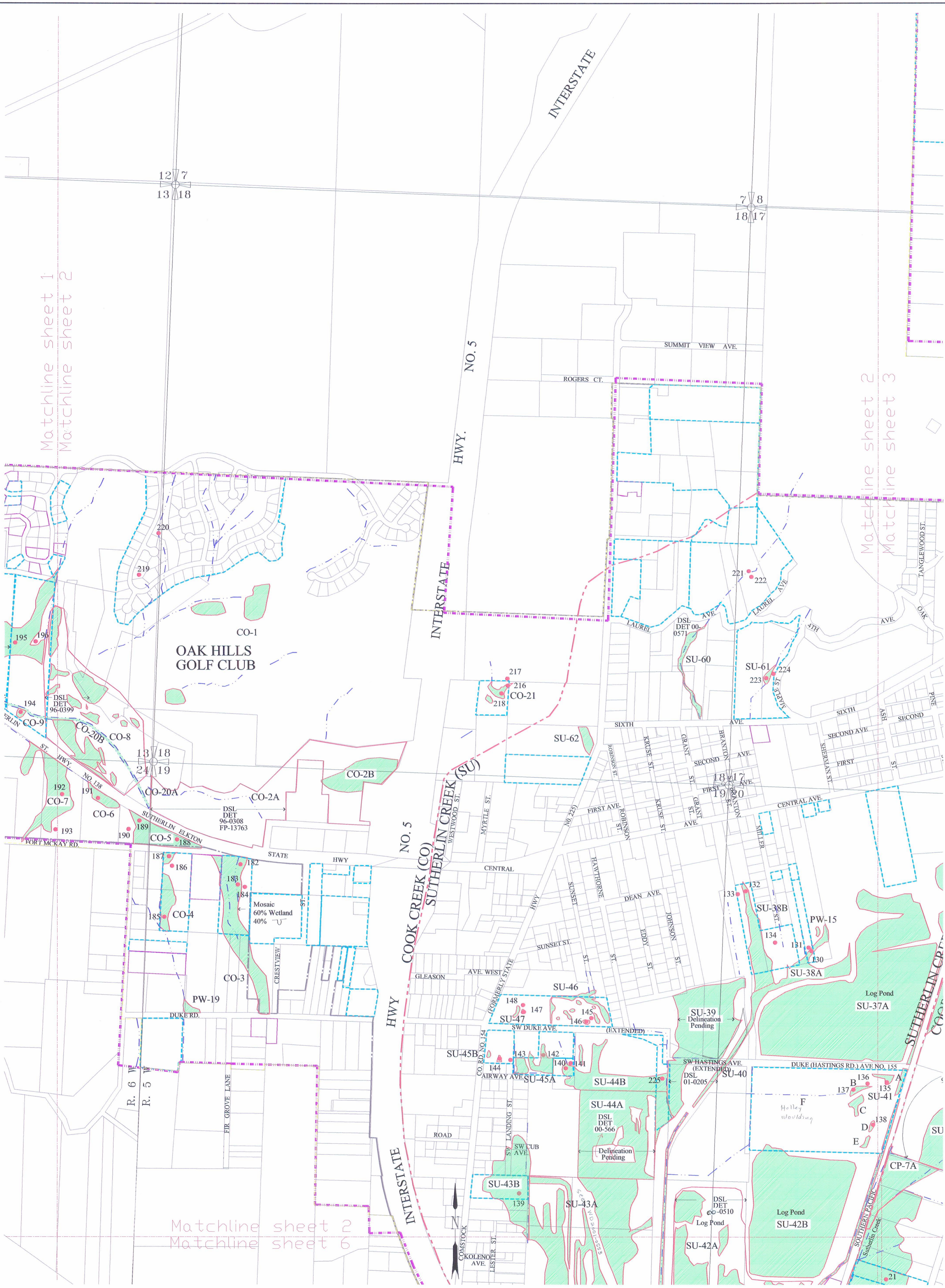
Sutherlin Local Wetlands Inventory

Pacific Habitat Services, Inc.
 9450 SW Commerce Circle, Suite 180
 Wilsonville, Oregon 97070
 Phone: (503) 570-0800

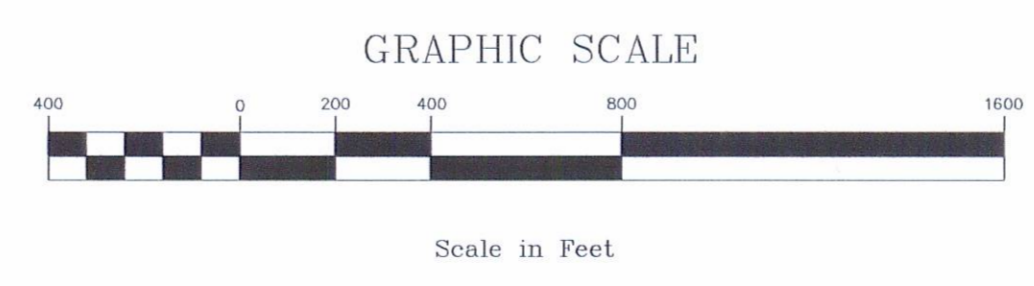


Sheet: 1

of: 8



Watershed Boundary	On-Site Determination	Access Denied
Project Boundary	Access Denied	Access Denied
Drainage	Potentially Jurisdictional Wetland	Potentially Jurisdictional Wetland
Sutherlin City Limits	Probable Wetland (off-site) PW	Wetland Code SU-1
Sample Point	58	



Funding for this project was provided by a grant from the Oregon Division of State Lands, Wetlands Planning Assistance grant program. This grant program is supported by a grant from the U.S. Environmental Protection Agency under authority of the Clean Water Act.

THIS MAP IS FOR PLANNING PURPOSES ONLY
WETLAND BOUNDARIES ARE APPROXIMATE
AND SUBJECT TO CHANGE

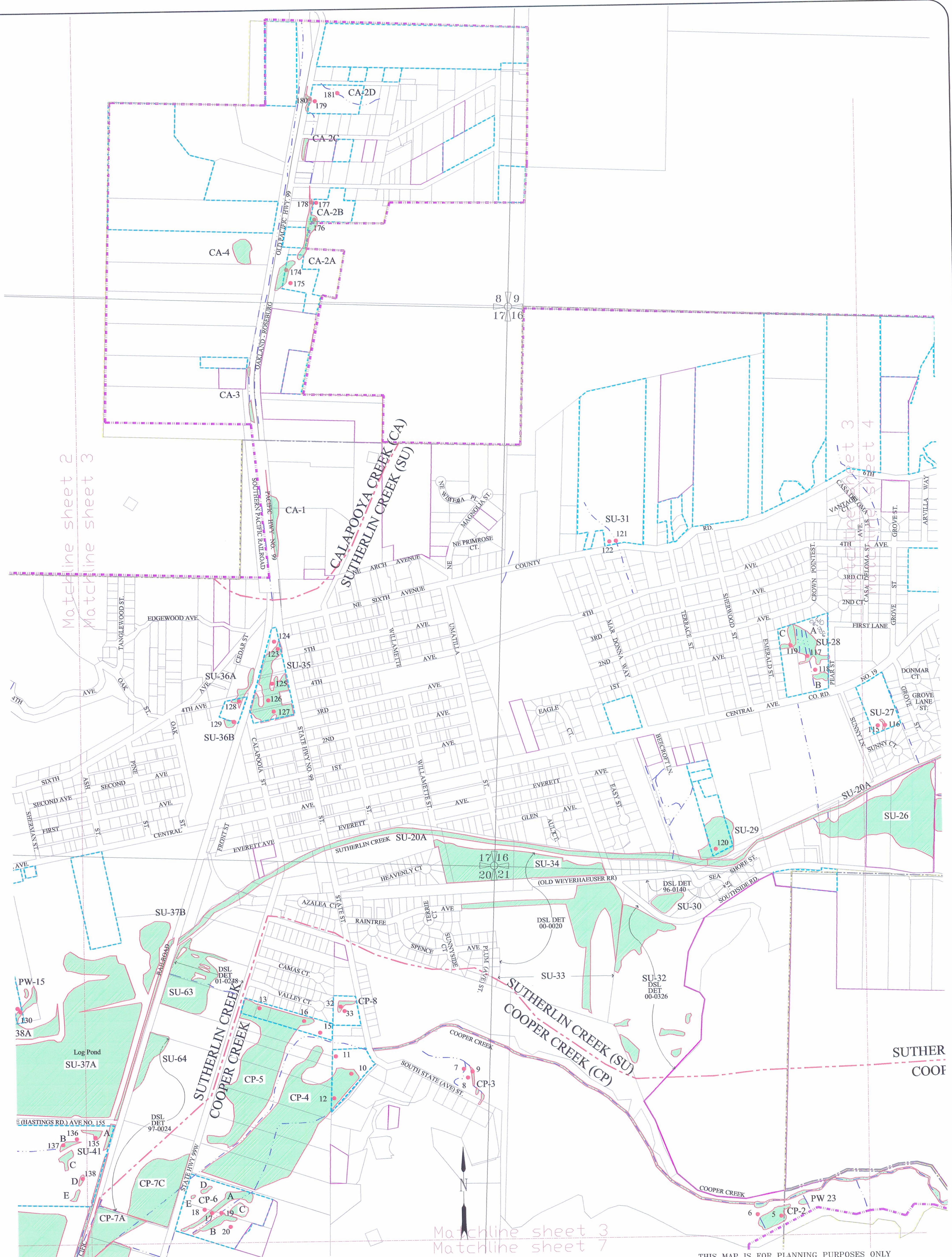
This map has NOT been approved by the wetland regulatory agencies for permitting purposes. You are advised to contact the Oregon Division of State Lands and the U.S. Army Corps of Engineers with any regulatory questions. There may be additional wetlands within the study area that have not been identified. All wetlands, whether mapped or not, are subject to Federal and State permit requirements. There may also be areas of non-wetland within areas identified as wetlands on this map. In all cases, Federal and State agencies will use actual field conditions, rather than this map, to determine wetland boundaries.

DATE: March, 2001
 BASE MAP INFO: Supplied by City of Sutherlin,
 : Umpqua/Rogue Council of Govt.
 : and Douglas County
 JOB NO.: 2143

Sutherlin Local Wetlands Inventory

Pacific Habitat Services, Inc.
 9450 SW Commerce Circle, Suite 180
 Wilsonville, Oregon 97070
 Phone: (503) 570-0800

Sheet: 2
 of: 8

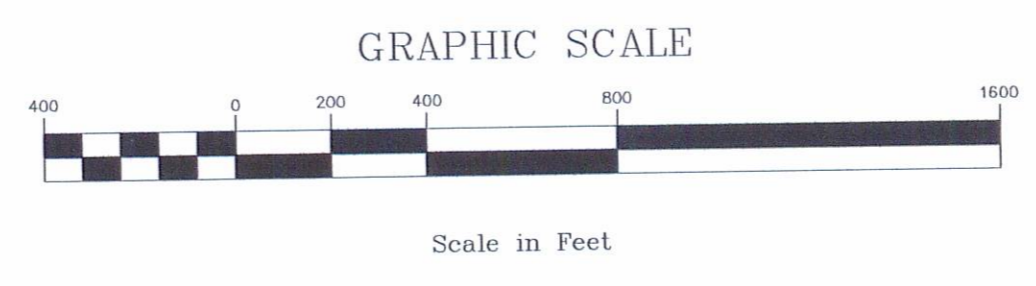


Matchline sheet 2
Matchline sheet 3

Matchline sheet 3
Matchline sheet 4

Matchline sheet 3
Matchline sheet 7

Watershed Boundary	On-Site Determination	Access Denied
Project Boundary	Access Denied	Potentially Jurisdictional Wetland
Drainage	Potentially Jurisdictional Wetland	Probable Wetland (off-site) PW
Sutherlin City Limits	Probable Wetland (off-site) PW	Wetland Code SU-1
Sample Point	58	



Funding for this project was provided by a grant from the Oregon Division of State Lands, Wetlands Planning Assistance grant program. This grant program is supported by a grant from the U.S. Environmental Protection Agency under authority of the Clean Water Act.

THIS MAP IS FOR PLANNING PURPOSES ONLY
WETLAND BOUNDARIES ARE APPROXIMATE
AND SUBJECT TO CHANGE

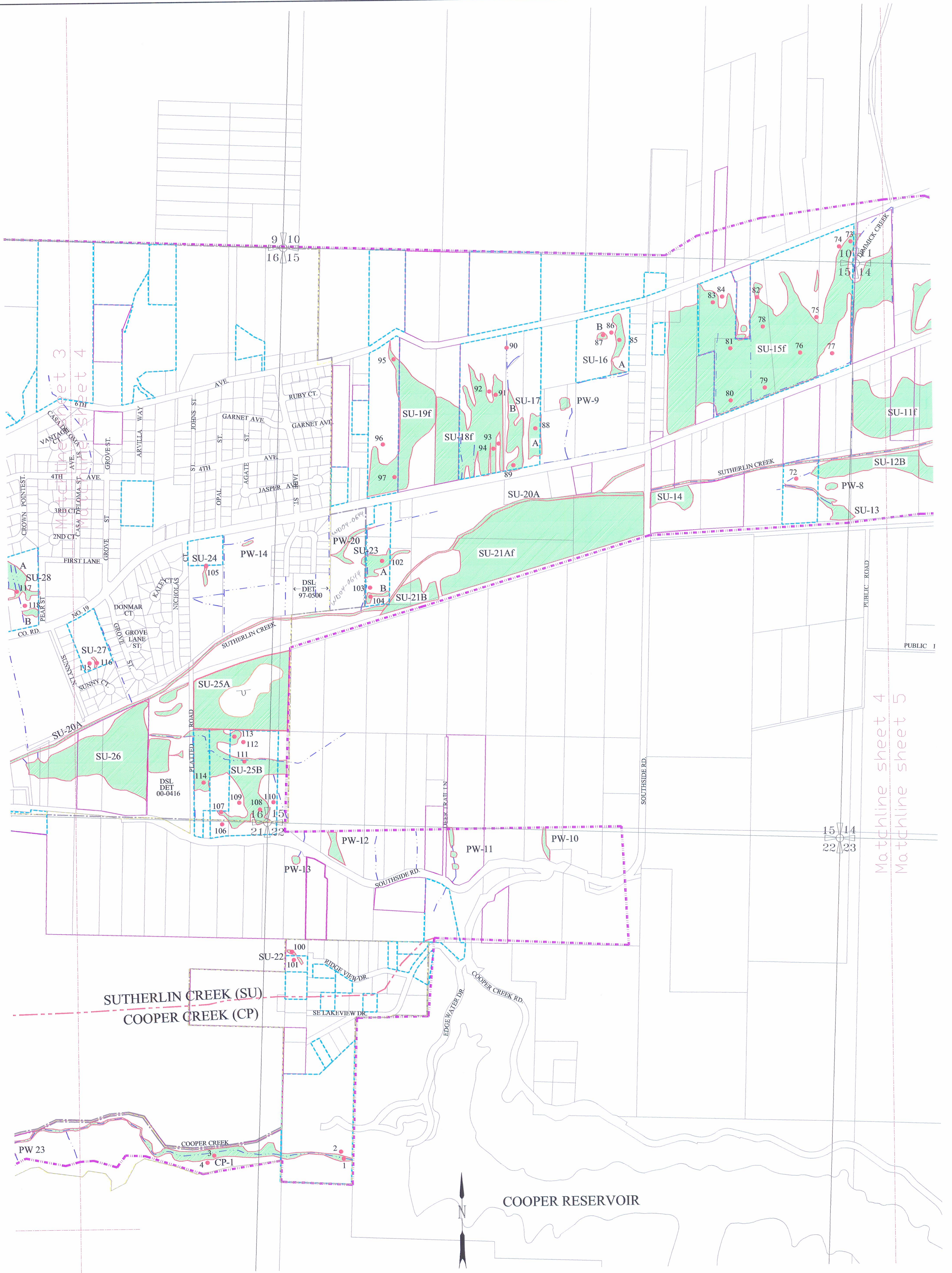
This map has NOT been approved by the wetland regulatory agencies for permitting purposes. You are advised to contact the Oregon Division of State Lands and the U.S. Army Corps of Engineers with any regulatory questions. There may be additional wetlands within the study area that have not been identified. All wetlands, whether mapped or not, are subject to Federal and State permit requirements. There may also be areas of non-wetland within areas identified as wetlands on this map. In all cases, Federal and State agencies will use actual field conditions, rather than this map, to determine wetland boundaries.

DATE: March, 2001
BASE MAP INFO: Supplied by City of Sutherlin,
: Umpqua/Rogue Council of Govt.
: and Douglas County
JOB NO.: 2143

Sutherlin Local Wetlands Inventory

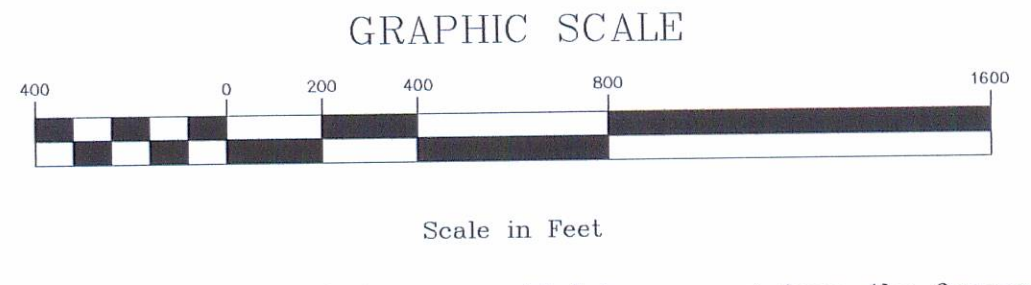


Sheet: 3
of: 8



Matchline sheet 4
Matchline sheet 5

Watershed Boundary	On-Site Determination	Access Denied
Project Boundary	Access Denied	Access Denied
Drainage	Potentially Jurisdictional Wetland	Potentially Jurisdictional Wetland
Sutherlin City Limits	Probable Wetland (off-site) PW	Wetland Code
Sample Point	58	SU-1



Funding for this project was provided by a grant from the Oregon Division of State Lands, Wetlands Planning Assistance grant program. This grant program is supported by a grant from the U.S. Environmental Protection Agency under authority of the Clean Water Act.

THIS MAP IS FOR PLANNING PURPOSES ONLY
WETLAND BOUNDARIES ARE APPROXIMATE
AND SUBJECT TO CHANGE

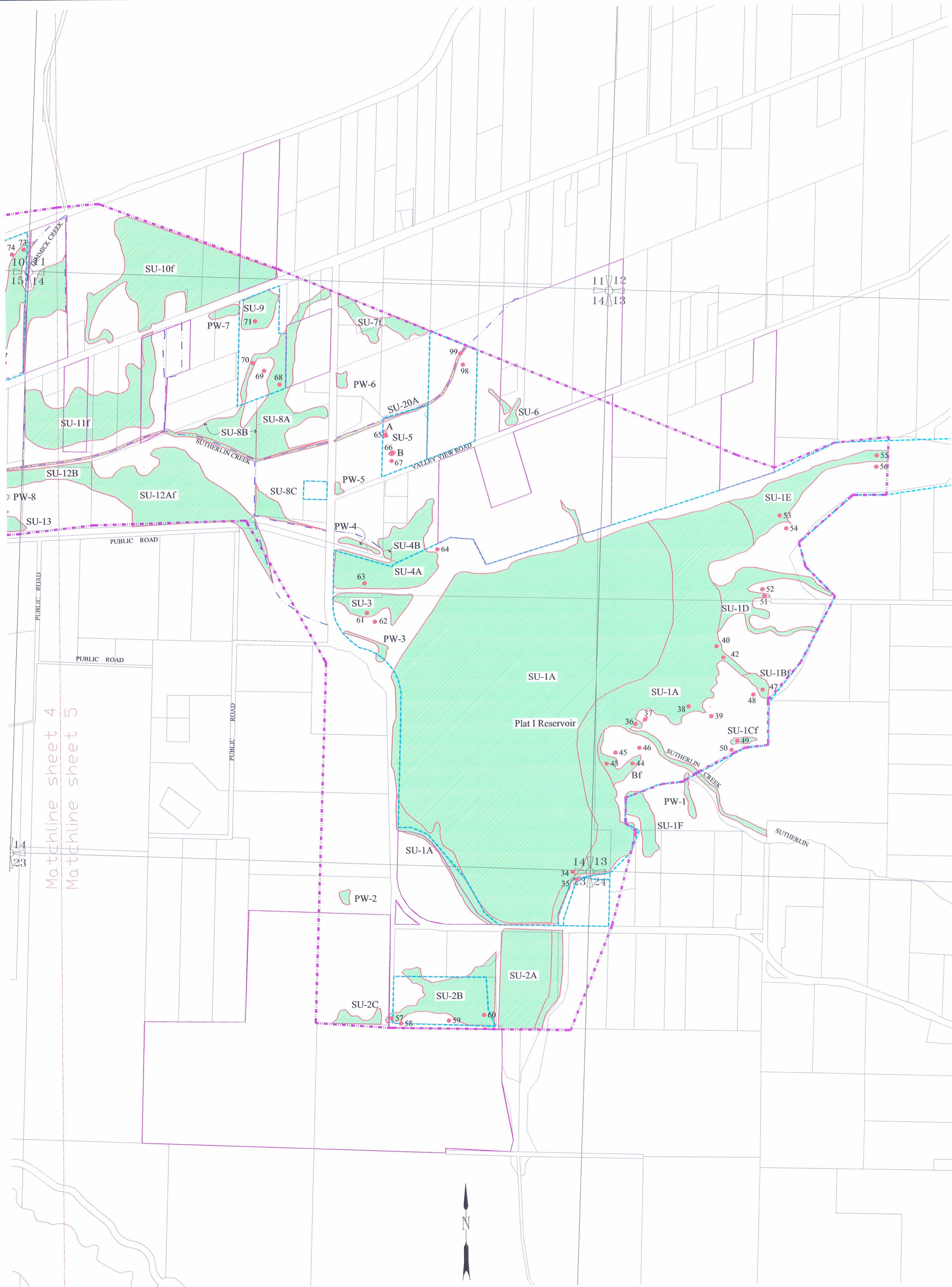
This map has NOT been approved by the wetland regulatory agencies for permitting purposes. You are advised to contact the Oregon Division of State Lands and the U.S. Army Corps of Engineers with any regulatory questions. There may be additional wetlands within the study area that have not been identified. All wetlands, whether mapped or not, are subject to Federal and State permit requirements. There may also be areas of non-wetland within areas identified as wetlands on this map. In all cases, Federal and State agencies will use actual field conditions, rather than this map, to determine wetland boundaries.

DATE: March, 2001
BASE MAP INFO: Supplied by City of Sutherlin,
: Umpqua/Rogue Council of Govt.
: and Douglas County
JOB NO.: 2143

Sutherlin Local Wetlands Inventory

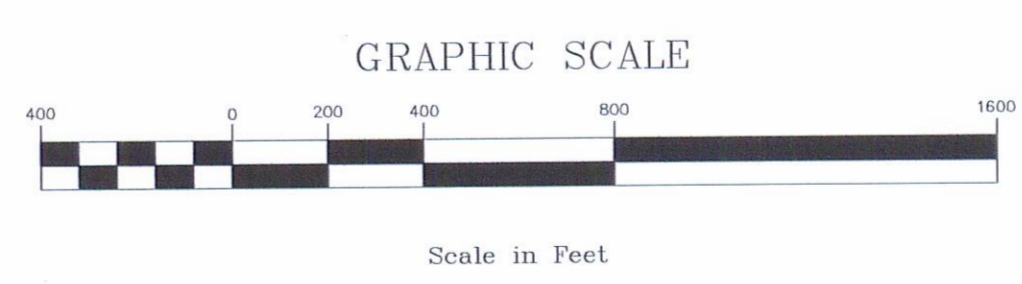


Pacific Habitat Services, Inc.
9450 SW Commerce Circle, Suite 180
Wilsonville, Oregon 97070
Phone: (503) 570-0800
Sheet: 4
of: 8



Matchline sheet 4
 Matchline sheet 5

Watershed Boundary	On-Site Determination	Access Denied
Project Boundary	Access Denied	Access Denied
Drainage	Potentially Jurisdictional Wetland	Access Denied
Sutherlin City Limits	Probable Wetland (off-site) PW	Access Denied
Sample Point	Wetland Code SU-1	Access Denied



Funding for this project was provided by a grant from the Oregon Division of State Lands, Wetlands Planning Assistance grant program. This grant program is supported by a grant from the U.S. Environmental Protection Agency under authority of the Clean Water Act.

THIS MAP IS FOR PLANNING PURPOSES ONLY
 WETLAND BOUNDARIES ARE APPROXIMATE
 AND SUBJECT TO CHANGE

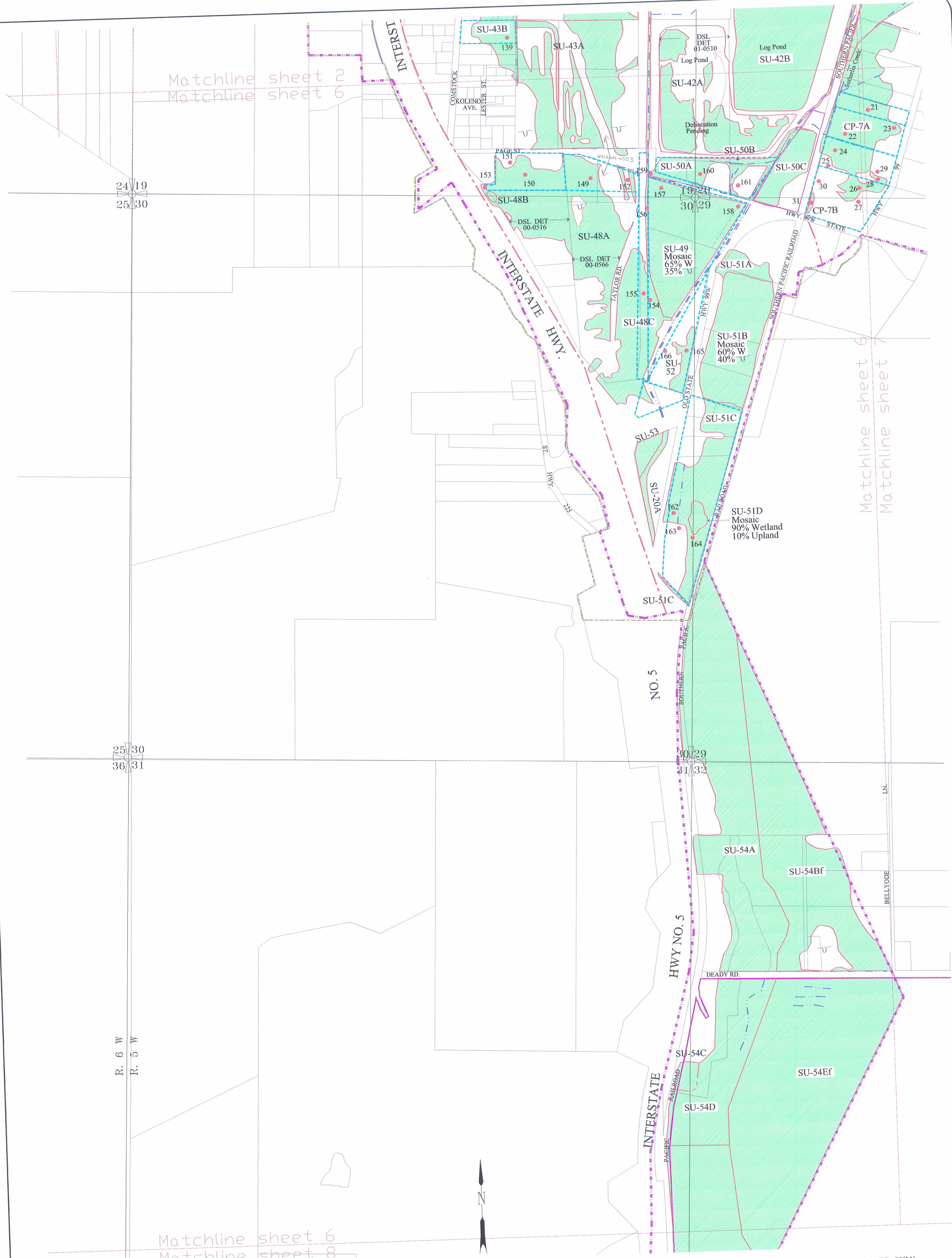
This map has NOT been approved by the wetland regulatory agencies for permitting purposes. You are advised to contact the Oregon Division of State Lands and the U.S. Army Corps of Engineers with any regulatory questions. There may be additional wetlands within the study area that have not been identified. All wetlands, whether mapped or not, are subject to Federal and State permit requirements. There may also be areas of non-wetland within areas identified as wetlands on this map. In all cases, Federal and State agencies will use actual field conditions, rather than this map, to determine wetland boundaries.

DATE: March, 2001
 BASE MAP INFO: Supplied by City of Sutherlin,
 : Umpqua/Rogue Council of Govt.
 : and Douglas County
 JOB NO.: 2143

Sutherlin

Local Wetlands Inventory

Pacific Habitat Services, Inc.
 9450 SW Commerce Circle, Suite 180
 Wilsonville, Oregon 97070
 Phone: (503) 570-0800



Matchline sheet 2
Matchline sheet 6

24/19
25/30

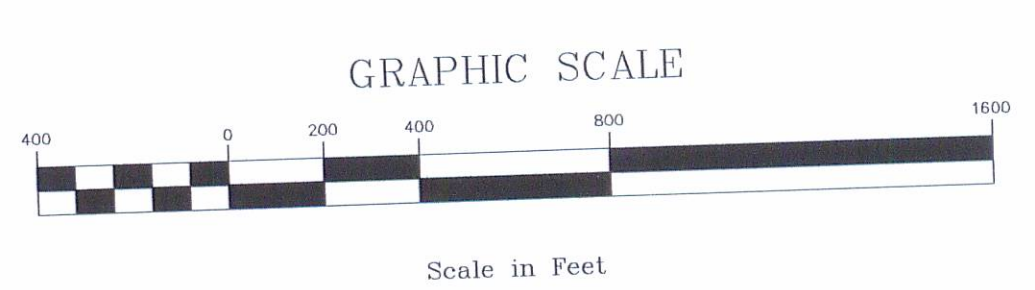
25/30
36/31

R. 6 W
R. 5 W

Matchline sheet 6
Matchline sheet 8

Matchline sheet 6
Matchline sheet

Watershed Boundary	On-Site Determination	Access Denied
Project Boundary	Access Denied	Potentially Jurisdictional Wetland
Drainage	Potentially Jurisdictional Wetland	Probable Wetland (off-site) PW
Sutherlin City Limits	Probable Wetland (off-site) PW	Wetland Code
Sample Point	58	SU-1



Funding for this project was provided by a grant from the Oregon Division of State Lands, Wetlands Planning Assistance grant program. This grant program is supported by a grant from the U.S. Environmental Protection Agency under authority of the Clean Water Act.

THIS MAP IS FOR PLANNING PURPOSES ONLY
WETLAND BOUNDARIES ARE APPROXIMATE
AND SUBJECT TO CHANGE

This map has NOT been approved by the wetland regulatory agencies for permitting purposes. You are advised to contact the Oregon Division of State Lands and the U.S. Army Corps of Engineers with any regulatory questions. There may be additional wetlands within the study area that have not been identified. All wetlands, whether mapped or not, are subject to Federal and State permit requirements. There may also be areas of non-wetland within areas identified as wetlands on this map. In all cases, Federal and State agencies will use actual field conditions, rather than this map, to determine wetland boundaries.

DATE: March, 2001
BASE MAP INFO: Supplied by City of Sutherlin,
: Umpqua/Rogue Council of Govt.
: and Douglas County
JOB NO.: 2143

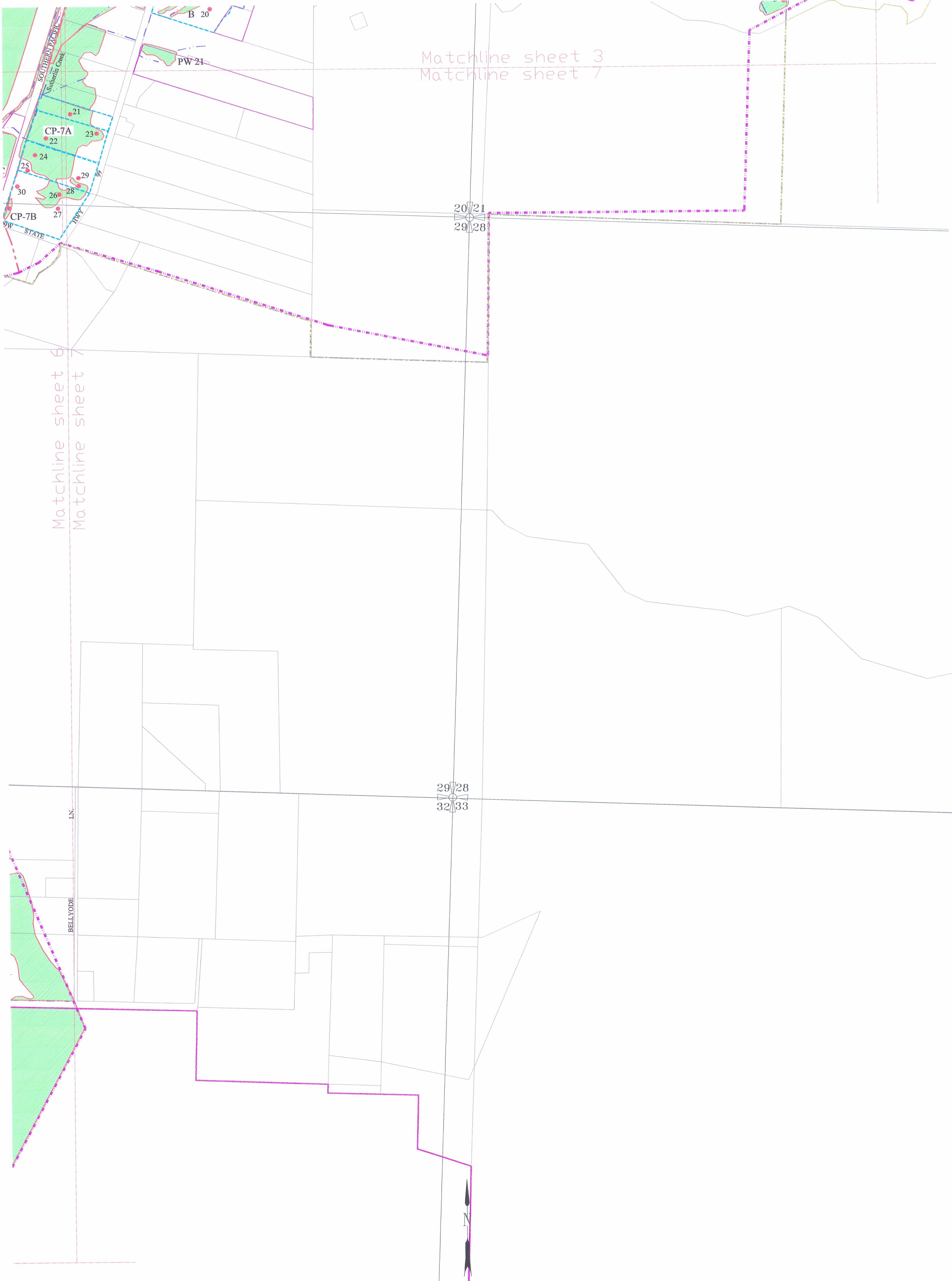
Sutherlin Local Wetlands Inventory

Pacific Habitat Services, Inc.
9450 SW Commerce Circle, Suite 180
Wilsonville, Oregon 97070
Phone: (503) 570-0800

Sheet: 6

of: 8

Matchline sheet 3
Matchline sheet 7



Matchline sheet 6
Matchline sheet

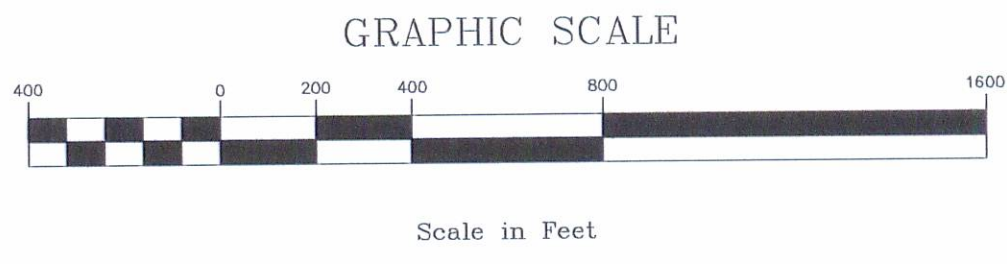
20/21
29/28

29/28
32/33

LN

BELLYODE

Watershed Boundary	On-Site Determination	Access Denied
Project Boundary	Access Denied	Access Denied
Drainage	Potentially Jurisdictional Wetland	Wetland
Sutherlin City Limits	Probable Wetland (off-site) PW	Wetland Code
Sample Point	SU-1	



Funding for this project was provided by a grant from the Oregon Division of State Lands, Wetlands Planning Assistance grant program. This grant program is supported by a grant from the U.S. Environmental Protection Agency under authority of the Clean Water Act.

THIS MAP IS FOR PLANNING PURPOSES ONLY
WETLAND BOUNDARIES ARE APPROXIMATE
AND SUBJECT TO CHANGE

This map has NOT been approved by the wetland regulatory agencies for permitting purposes. You are advised to contact the Oregon Division of State Lands and the U.S. Army Corps of Engineers with any regulatory questions. There may be additional wetlands within the study area that have not been identified. All wetlands, whether mapped or not, are subject to Federal and State permit requirements. There may also be areas of non-wetland within areas identified as wetlands on this map. In all cases, Federal and State agencies will use actual field conditions, rather than this map, to determine wetland boundaries.

DATE: March, 2001
BASE MAP INFO: Supplied by City of Sutherlin,
: Umpqua/Rogue Council of Govt.
: and Douglas County
JOB NO.: 2143

Sutherlin Local Wetlands Inventory

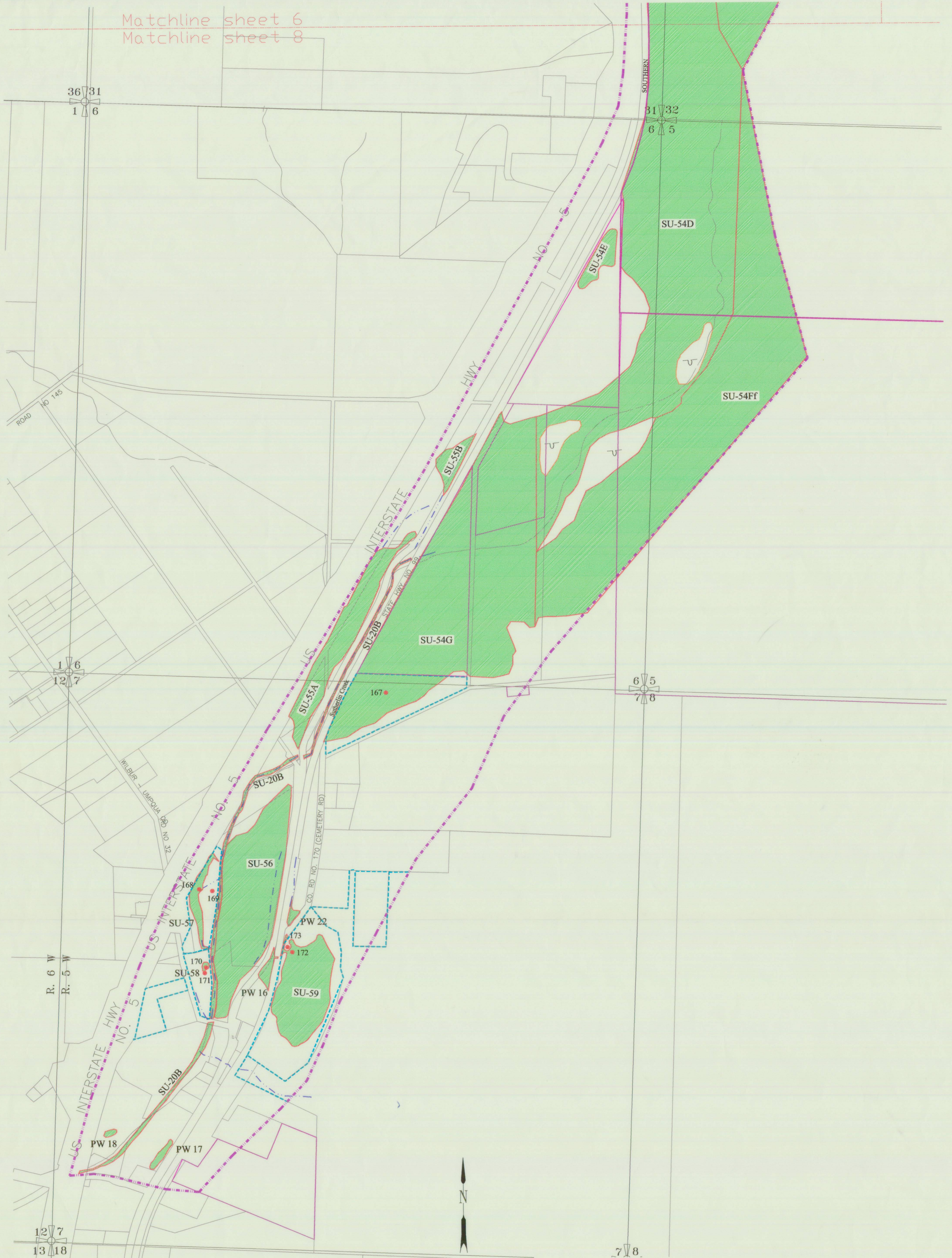
Pacific Habitat Services, Inc.
9450 SW Commerce Circle, Suite 180
Wilsonville, Oregon 97070
Phone: (503) 570-0800



Sheet: 7

of: 8

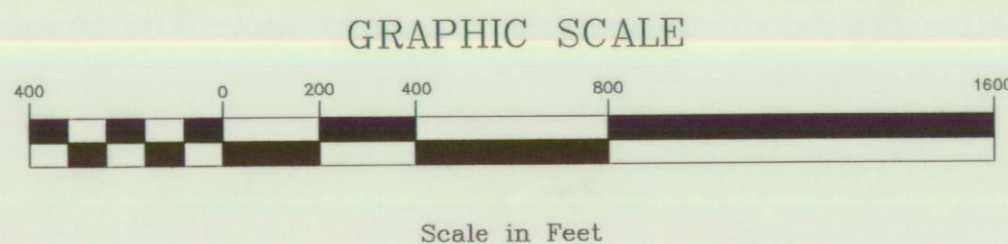
Matchline sheet 6
Matchline sheet 8



THIS MAP IS FOR PLANNING PURPOSES ONLY
WETLAND BOUNDARIES ARE APPROXIMATE
AND SUBJECT TO CHANGE

This map has NOT been approved by the wetland regulatory agencies for permitting purposes. You are advised to contact the Oregon Division of State Lands and the U.S. Army Corps of Engineers with any regulatory questions. There may be additional wetlands within the study area that have not been identified. All wetlands, whether mapped or not, are subject to Federal and State permit requirements. There may also be areas of non-wetland within areas identified as wetlands on this map. In all cases, Federal and State agencies will use actual field conditions, rather than this map, to determine wetland boundaries.

Watershed Boundary	On-Site Determination	Access Denied
Project Boundary	Access Denied	Potentially Jurisdictional Wetland
Drainage	Potentially Jurisdictional Wetland	Probable Wetland (off-site) PW
Sutherlin City Limits	Probable Wetland (off-site) PW	Wetland Code
Sample Point	Wetland Code	SU-1



Funding for this project was provided by a grant from the Oregon Division of State Lands, Wetlands Planning Assistance grant program. This grant program is supported by a grant from the U.S. Environmental Protection Agency under authority of the Clean Water Act.

DATE: March, 2001
BASE MAP INFO: Supplied by City of Sutherlin,
: Umpqua/Rogue Council of Govt.
: and Douglas County
JOB NO.: 2143

Sutherlin Local Wetlands Inventory

Pacific Habitat Services, Inc.
9450 SW Commerce Circle, Suite 180
Wilsonville, Oregon 97070
Phone: (503) 570-0800



Sheet: 8

of: 8