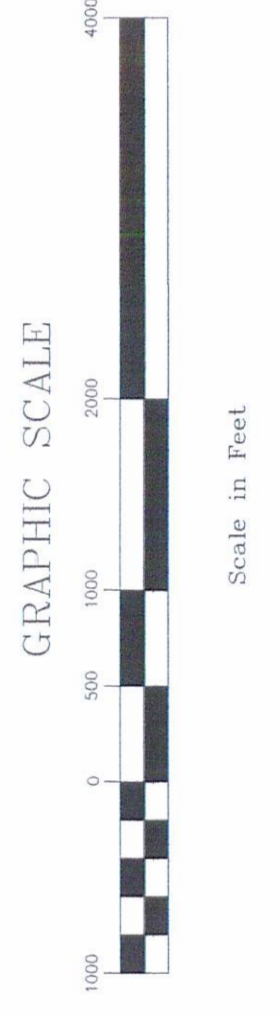


APPROVED WETLANDS INVENTORY  
 Oregon Division of State Lands  
 Meets Local Wetland Inventory Standards  
 Date 7/00 Approved by J. Moran

- Watershed Boundary ——— Access Denied
- Drainage ——— Wetland
- Urban Growth Boundary - - - - - Wetland Code
- Sample Point ●



Funding for this project was provided by a grant from the Oregon Division of State Lands, supported by funding from the U.S. Environmental Protection Agency under authority of the Clean Water Act.

THIS MAP IS FOR PLANNING PURPOSES ONLY  
 WETLAND BOUNDARIES ARE APPROXIMATE  
 AND SUBJECT TO CHANGE

This map has NOT been approved by the wetland regulatory agencies for permitting purposes. You are advised to contact the Oregon Division of State Lands and the U.S. Army Corps of Engineers with any regulatory questions. There may be additional wetlands within the study area that have not been identified. All wetlands, whether mapped or not, are subject to Federal and State permit requirements. There may also be areas of non-wetland within areas identified as wetlands on this map. In all cases, Federal and State agencies will use actual field conditions, rather than this map, to determine wetland boundaries.

DATE: June, 2000  
 BASE MAP INFO: Supplied by City of Sweet Home,  
 and Linn County  
 JOB NO.: 9-1884

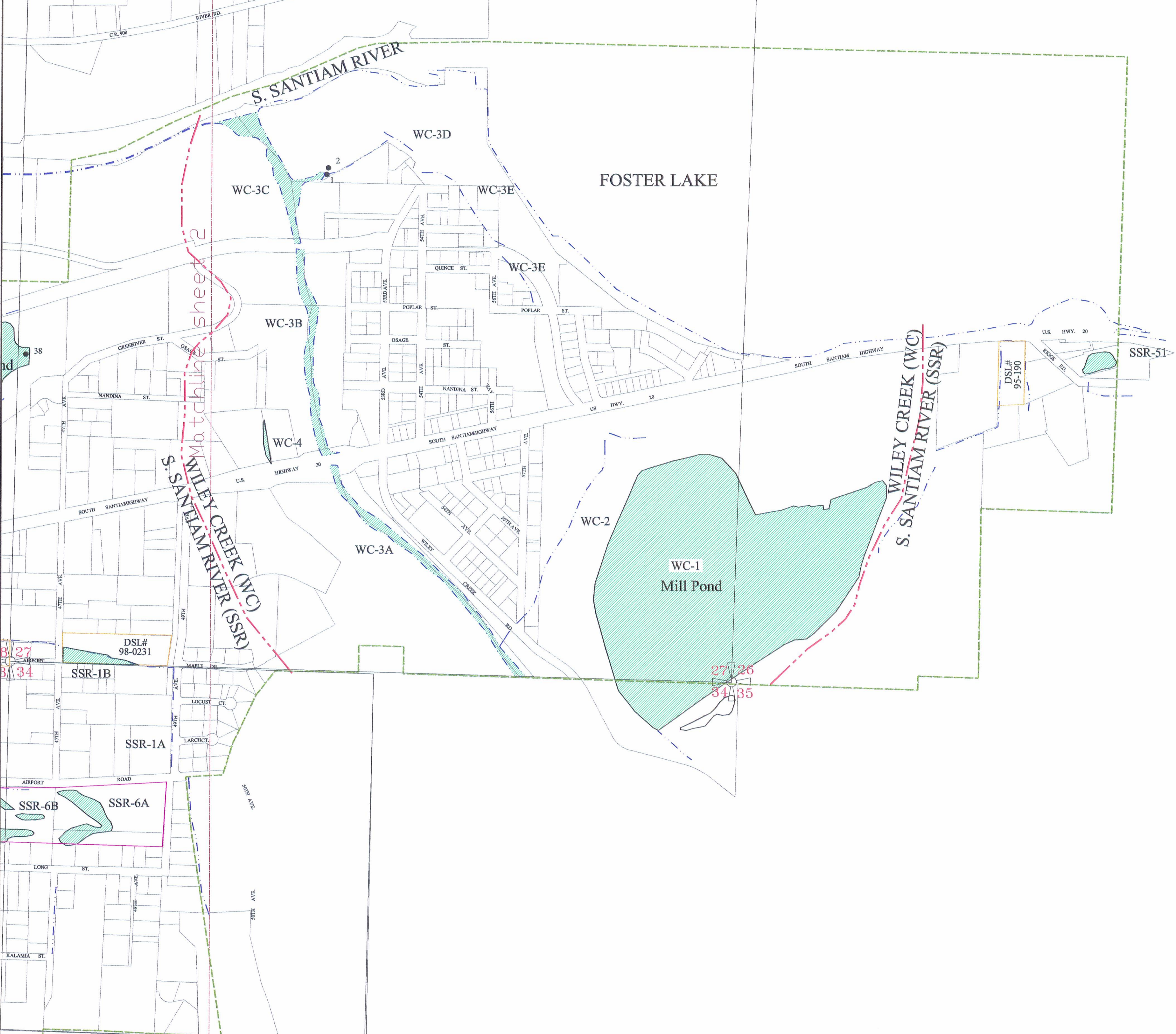
# Sweet Home Local Wetlands Inventory

Reference Sheet

Pacific Habitat Services, Inc.  
 9450 SW Commerce Circle, Suite 180  
 Wilsonville, Oregon 97070  
 Phone: (503) 570-0800

21/22  
28/27

22/23  
27/26



DSL# 98-0231  
SSR-1B

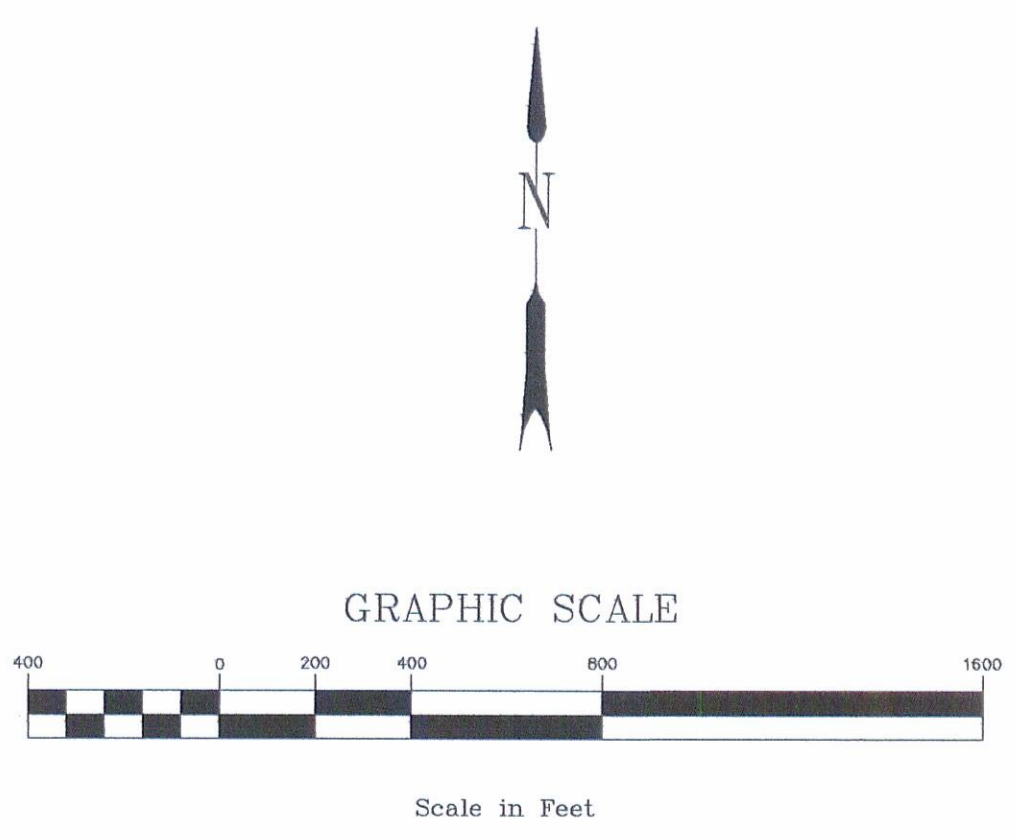
SSR-6B  
SSR-6A

SSR-2

27/26  
34/35

APPROVED WETLANDS INVENTORY  
Oregon Division of State Lands  
Meets Local Wetland Inventory standards  
Date: 7/00 Approved by: J. Moran

Watershed Boundary	Access Denied	Access Denied
Drainage	Wetland	Wetland
Urban Growth Boundary	Wetland Code	SSR-1
	Sample Point	58



Funding for this project was provided by a grant from the Oregon Division of State Lands, Wetlands Planning Assistance grant program. This grant program is supported by a grant from the U.S. Environmental Protection Agency under authority of the Clean Water Act.

THIS MAP IS FOR PLANNING PURPOSES ONLY  
WETLAND BOUNDARIES ARE APPROXIMATE  
AND SUBJECT TO CHANGE

This map has NOT been approved by the wetland regulatory agencies for permitting purposes. You are advised to contact the Oregon Division of State Lands and the U.S. Army Corps of Engineers with any regulatory questions. There may be additional wetlands within the study area that have not been identified. All wetlands, whether mapped or not, are subject to Federal and State permit requirements. There may also be areas of non-wetland within areas identified as wetlands on this map. In all cases, Federal and State agencies will use actual field conditions, rather than this map, to determine wetland boundaries.

DATE: June, 2000

BASE MAP INFO: Supplied by City of Sweet Home,  
and Linn County

JOB NO.: 9-1884

# Sweet Home

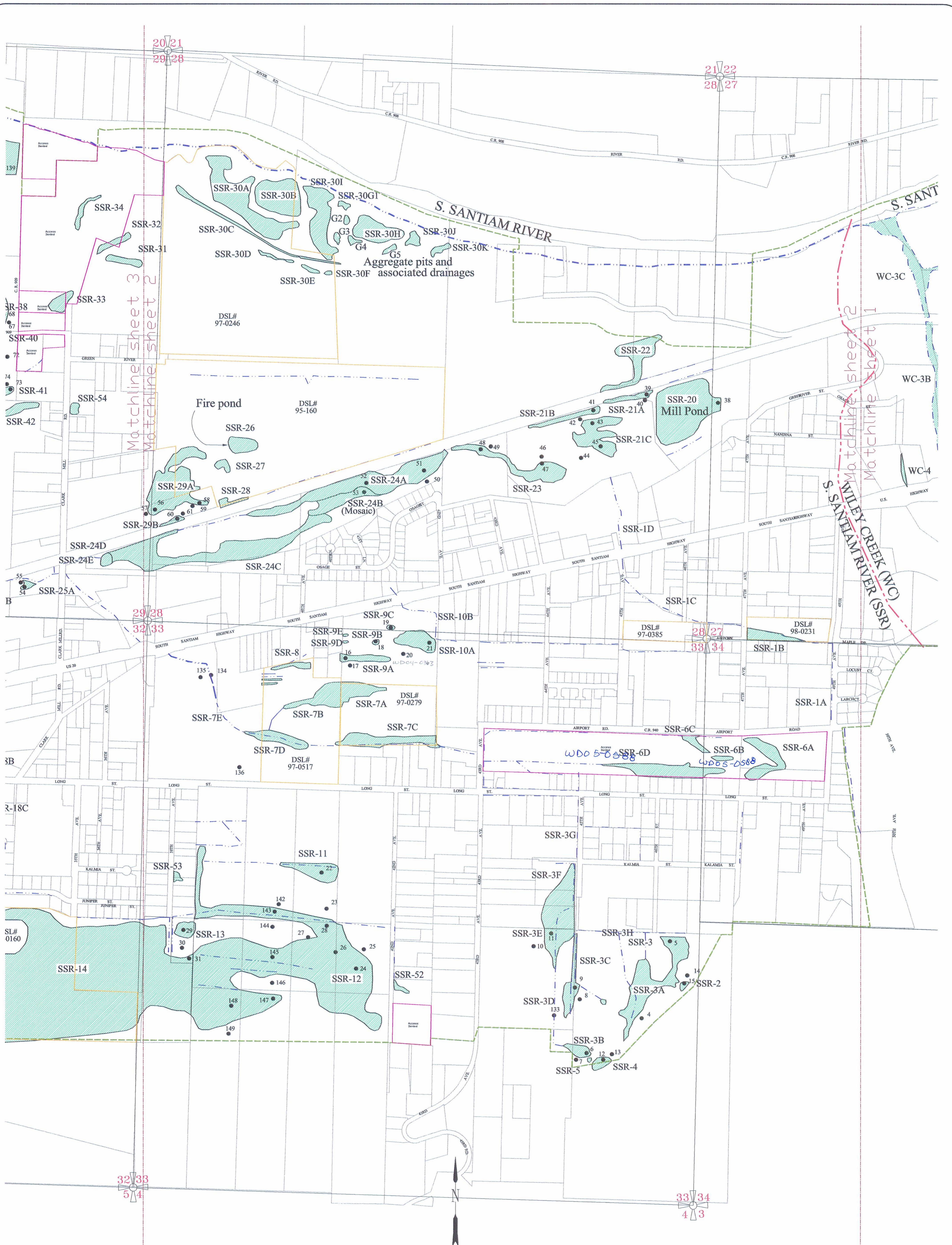
## Local Wetlands Inventory

Pacific Habitat Services, Inc.  
9450 SW Commerce Circle, Suite 180  
Wilsonville, Oregon 97070  
Phone: (503) 570-0800



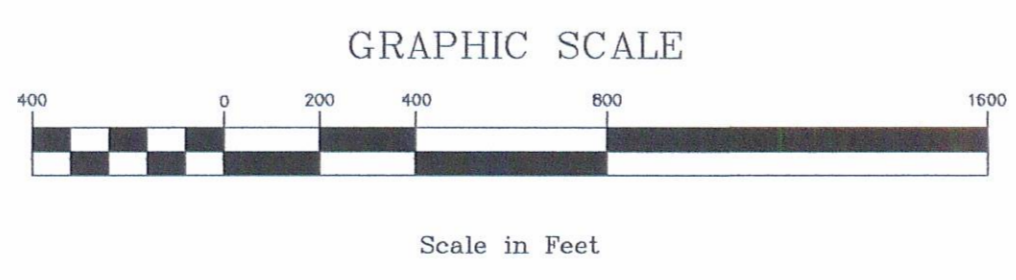
Sheet: 1

of: 4



APPROVED WETLANDS INVENTORY  
 Oregon Division of State Lands  
 Meets Local Wetland Inventory standards  
 Date 7/00 Approved by J. Morlan

Watershed Boundary	Access Denied	Access Denied
Drainage	Wetland	Wetland
Urban Growth Boundary	Wetland Code	SSR-1
	Sample Point	58



Funding for this project was provided by a grant from the Oregon Division of State Lands, Wetlands Planning Assistance grant program. This grant program is supported by a grant from the U.S. Environmental Protection Agency under authority of the Clean Water Act.

THIS MAP IS FOR PLANNING PURPOSES ONLY  
 WETLAND BOUNDARIES ARE APPROXIMATE  
 AND SUBJECT TO CHANGE

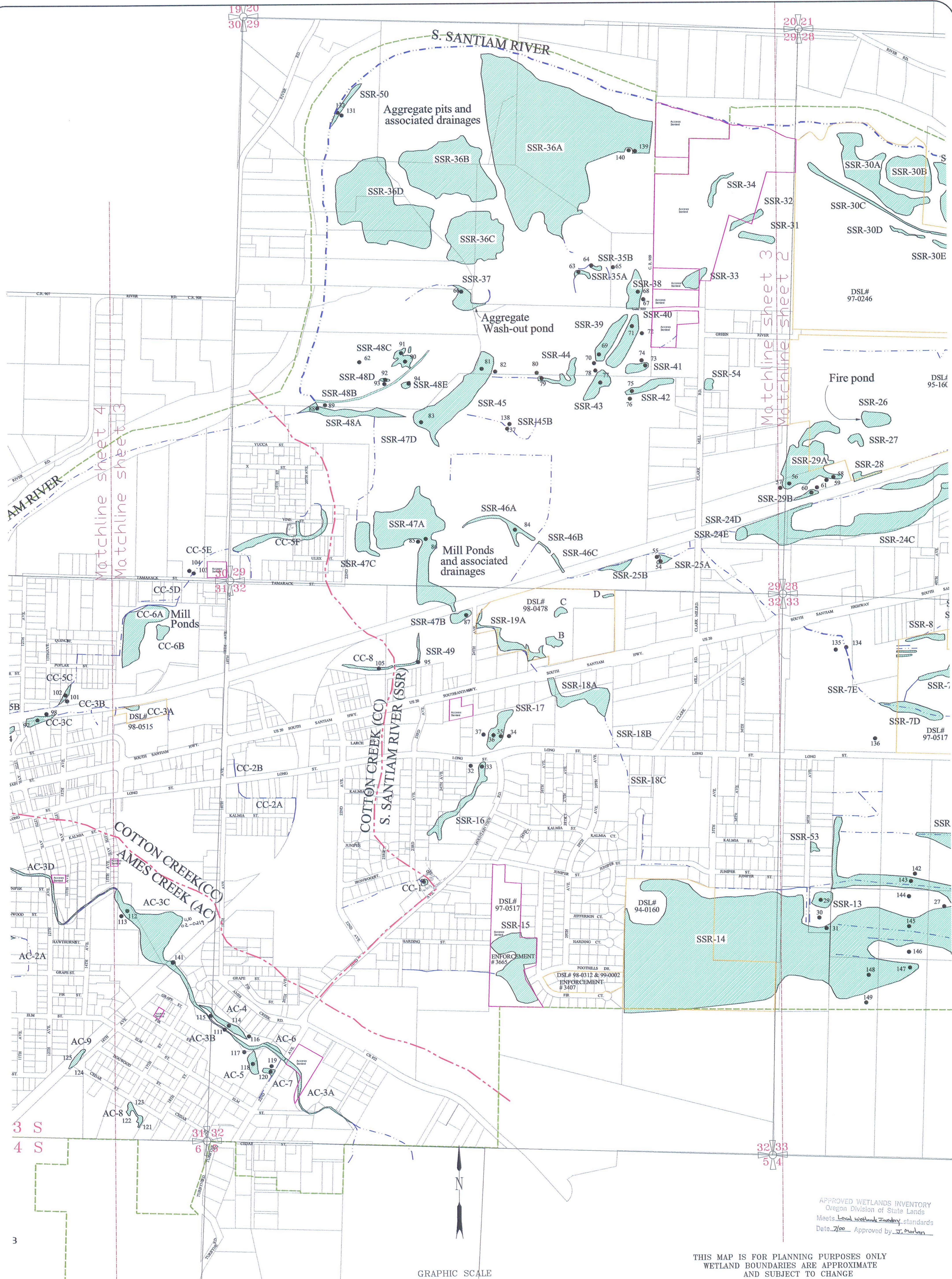
This map has NOT been approved by the wetland regulatory agencies for permitting purposes. You are advised to contact the Oregon Division of State Lands and the U.S. Army Corps of Engineers with any regulatory questions. There may be additional wetlands within the study area that have not been identified. All wetlands, whether mapped or not, are subject to Federal and State permit requirements. There may also be areas of non-wetland within areas identified as wetlands on this map. In all cases, Federal and State agencies will use actual field conditions, rather than this map, to determine wetland boundaries.

DATE: June, 2000  
 BASE MAP INFO: Supplied by City of Sweet Home, : and Linn County  
 JOB NO.: 9-1884

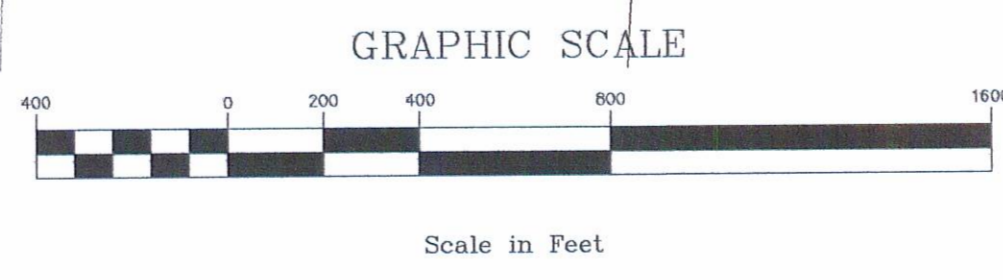
# Sweet Home Local Wetlands Inventory

Pacific Habitat Services, Inc.  
 9450 SW Commerce Circle, Suite 180  
 Wilsonville, Oregon 97070  
 Phone: (503) 570-0800

Sheet: 2  
 of: 4



Watershed Boundary	Access Denied	Access Denied
Drainage	Wetland	Wetland Code
Urban Growth Boundary	Wetland Code	Sample Point
		SSR-1
		58



Funding for this project was provided by a grant from the Oregon Division of State Lands, Wetlands Planning Assistance grant program. This grant program is supported by a grant from the U.S. Environmental Protection Agency under authority of the Clean Water Act.

APPROVED WETLANDS INVENTORY  
Oregon Division of State Lands  
Meets Local Wetlands Inventory standards  
Date: 7/00 Approved by: J. Madan

THIS MAP IS FOR PLANNING PURPOSES ONLY  
WETLAND BOUNDARIES ARE APPROXIMATE  
AND SUBJECT TO CHANGE

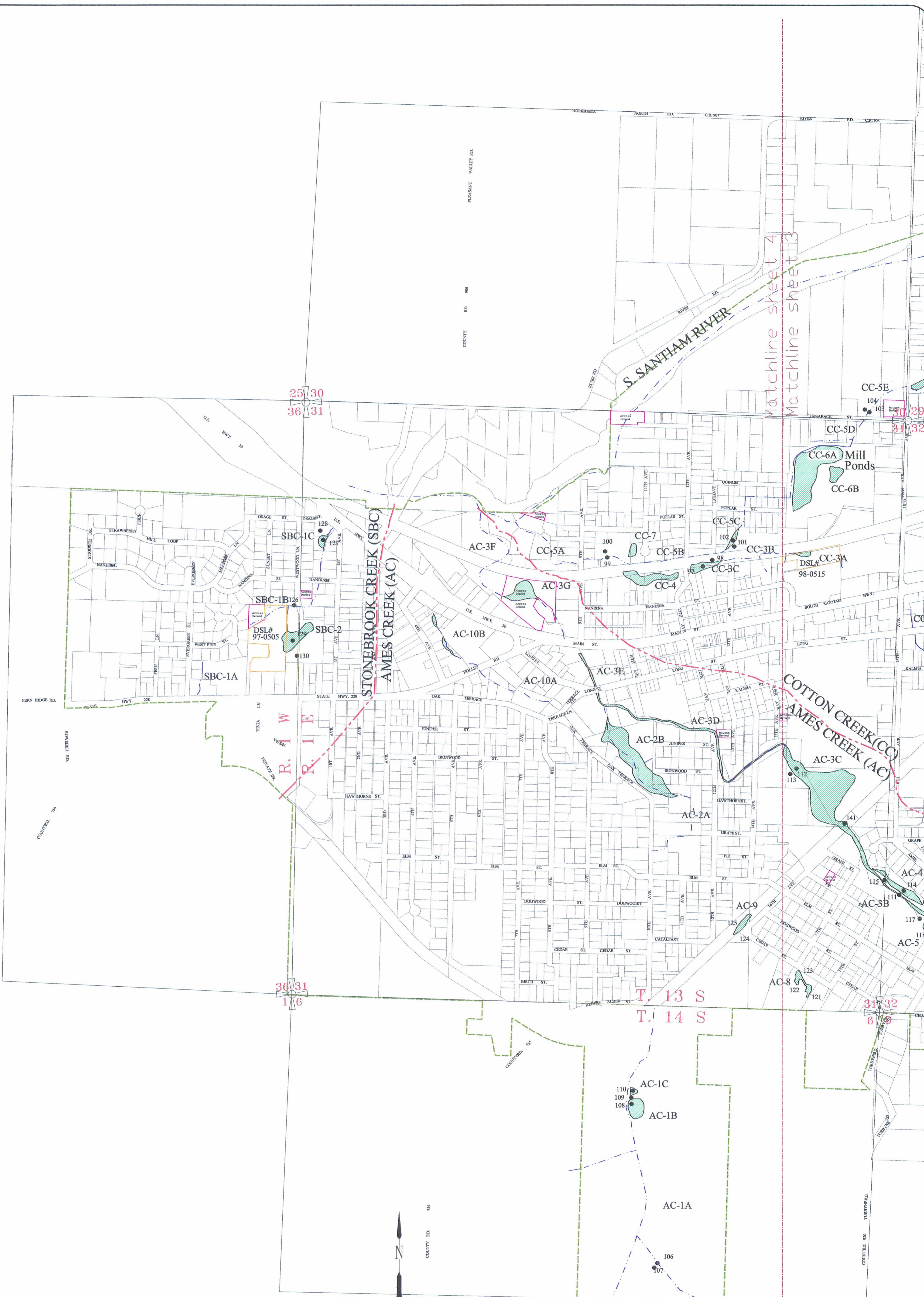
This map has NOT been approved by the wetland regulatory agencies for permitting purposes. You are advised to contact the Oregon Division of State Lands and the U.S. Army Corps of Engineers with any regulatory questions. There may be additional wetlands within the study area that have not been identified. All wetlands, whether mapped or not, are subject to Federal and State permit requirements. There may also be areas of non-wetland within areas identified as wetlands on this map. In all cases, Federal and State agencies will use actual field conditions, rather than this map, to determine wetland boundaries.

DATE: June, 2000  
BASE MAP INFO: Supplied by City of Sweet Home, and Linn County  
JOB NO.: 9-1884

# Sweet Home Local Wetlands Inventory

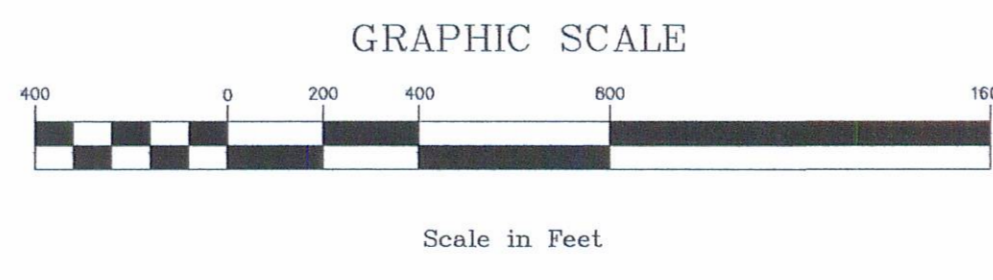
Pacific Habitat Services, Inc.  
9450 SW Commerce Circle, Suite 180  
Wilsonville, Oregon 97070  
Phone: (503) 570-0800

Sheet: 3  
of: 4



APPROVED WETLANDS INVENTORY  
Oregon Division of State Lands  
Meets Local Wetlands Inventory standards  
Date 7/00 - Approved by J. Marlan

Watershed Boundary	Access Denied	Access Denied
Drainage	Wetland	Wetland
Urban Growth Boundary	Wetland Code	SSR-1
	Sample Point	58



Funding for this project was provided by a grant from the Oregon Division of State Lands, Wetlands Planning Assistance grant program. This grant program is supported by a grant from the U.S. Environmental Protection Agency under authority of the Clean Water Act.

THIS MAP IS FOR PLANNING PURPOSES ONLY  
WETLAND BOUNDARIES ARE APPROXIMATE  
AND SUBJECT TO CHANGE

This map has NOT been approved by the wetland regulatory agencies for permitting purposes. You are advised to contact the Oregon Division of State Lands and the U.S. Army Corps of Engineers with any regulatory questions. There may be additional wetlands within the study area that have not been identified. All wetlands, whether mapped or not, are subject to Federal and State permit requirements. There may also be areas of non-wetland within areas identified as wetlands on this map. In all cases, Federal and State agencies will use actual field conditions, rather than this map, to determine wetland boundaries.

DATE:	June, 2000
BASE MAP INFO:	Supplied by City of Sweet Home, and Linn County
JOB NO.:	9-1884

# Sweet Home Local Wetlands Inventory

Pacific Habitat Services, Inc.  
9450 SW Commerce Circle, Suite 180  
Wilsonville, Oregon 97070  
Phone: (503) 570-0800