

City of Tualatin: Composite Natural Resource Inventory and Local Wetlands Inventory
 Map intended for general information only

Wetland	Geologic Features
Forest	Culvert
Meadow	Spring
Constructed Water Quality Facility	Sample Plots
Stream Channel (approximate location)	
Urban Growth Boundary	
Wetland Protected Area Boundary	

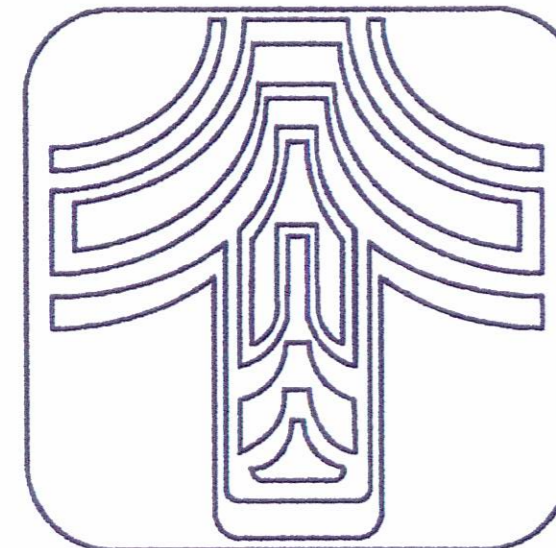
NOTE - Information shown on this map is for planning purposes and all wetland boundaries are approximate. In all cases, actual field conditions determine wetland boundaries. There may be unmapped wetlands subject to regulation.

Sources - 1995 Field Data by Fishman Environmental Services; Mapping by Geo Graphic Image; City of Tualatin: Wetland resource files & delineated wetland coverage (1972 - 1994); WAC black and white aerial photo (March, 1994 scale 1" = 400'); USGS Topographic Coverage (1985), and METRO Parcel Base (October, 1994)

8/1/94

APPROVED LOCAL WETLANDS INVENTORY
 OREGON DEPARTMENT OF STATE LANDS

Funding for the Wetlands and Natural Areas Inventory was made available by the Oregon Department of Land Conservation and Development



16

15

24

28

27

WETLAND PROTECTION DISTRICT BOUNDARY



Final - November 1995

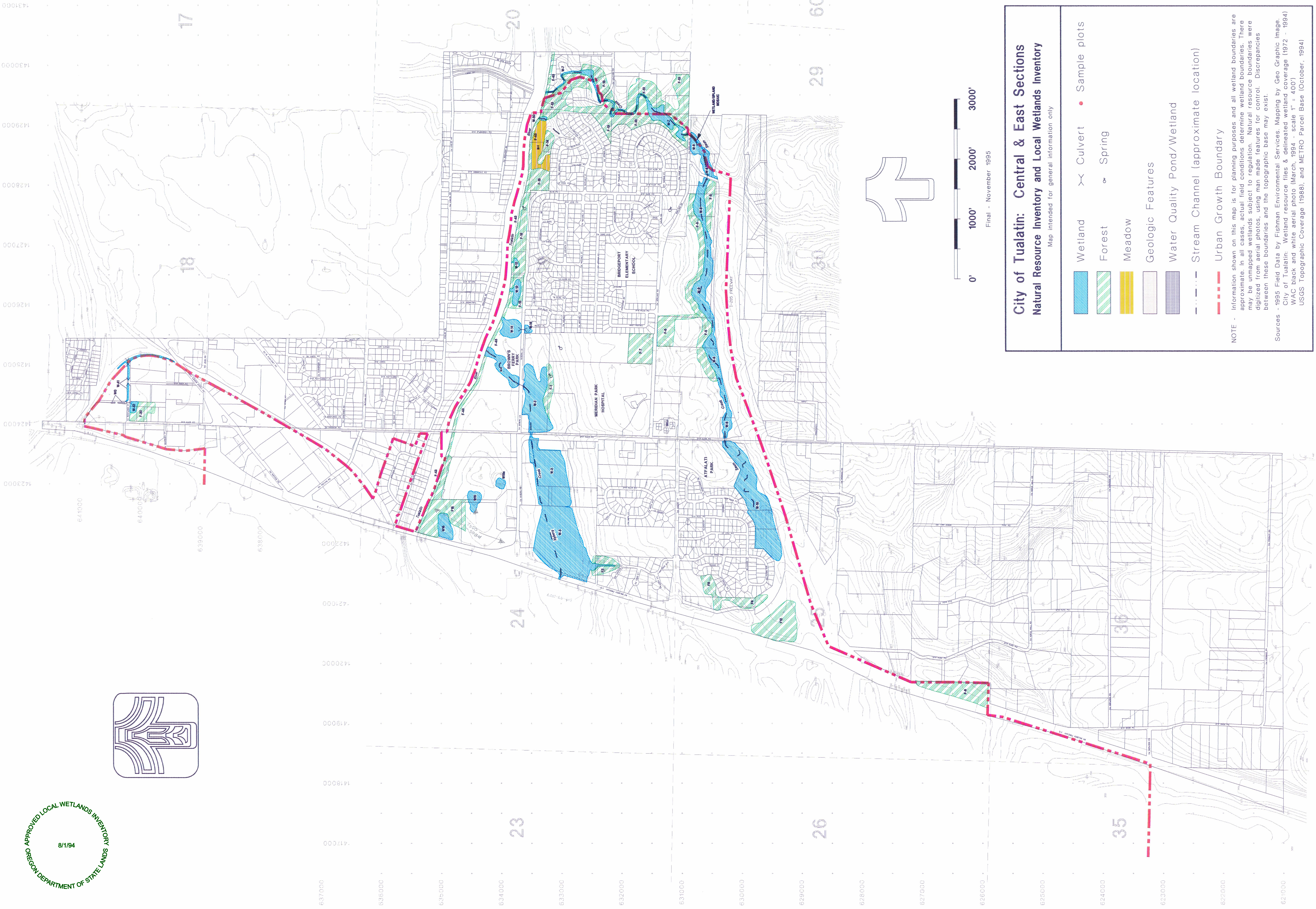
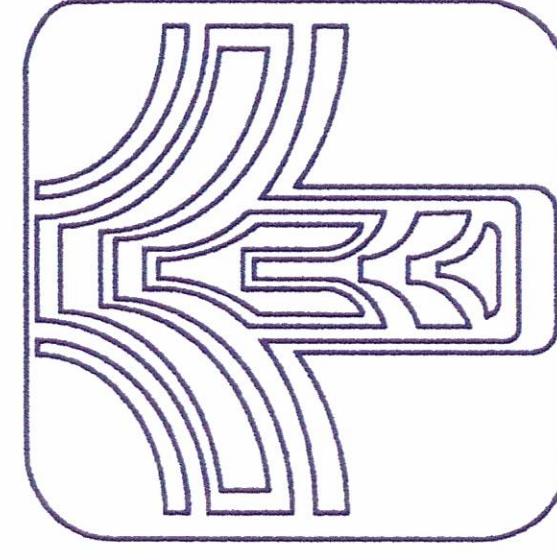
City of Tualatin: Northwest Section Natural Resource Inventory and Local Wetlands Inventory

Map intended for general information only

- Wetland
- Forest
- Water Quality Pond/Wetland
- Stream Channel (approximate location)
- Urban Growth Boundary
- Wetland Protected Area Boundary
- Culvert
- Spring
- Sample plots

NOTE - Information shown on this map is for planning purposes and all wetland boundaries are approximate. In all cases, actual field conditions determine wetland boundaries. There may be unmapped wetlands subject to regulation. Natural resource boundaries were digitized from aerial photos, using man made features for control. Discrepancies between these boundaries and the topographic base may exist.

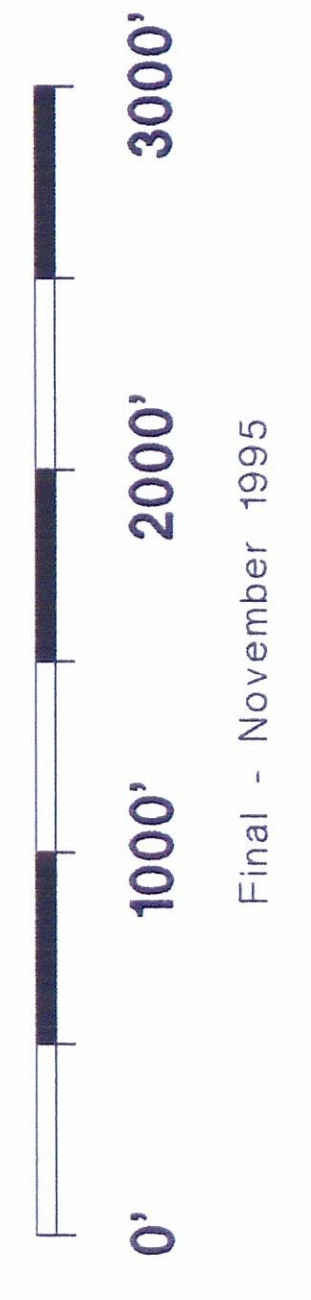
Sources - 1995 Field Data by Fishman Environmental Services, Mapping by Geo Graphic Image, City of Tualatin: Wetland resource files & delineated wetland coverage (1972 - 1994) WAC black and white aerial photo (March, 1994 - scale 1" = 400') USGS Topographic Coverage (1988), and METRO Parcel Base (October, 1994)



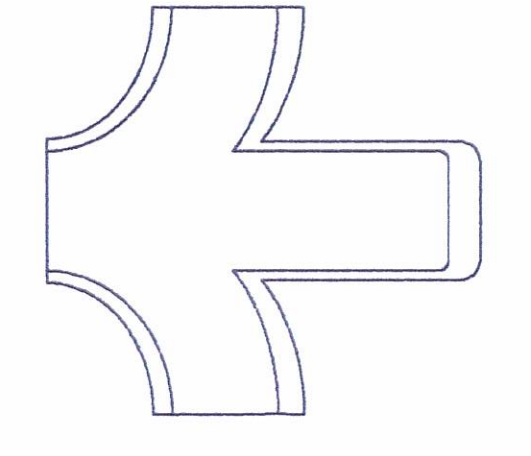
City of Tualatin: Central & East Sections
Natural Resource Inventory and Local Wetlands Inventory

Map intended for general information only

- Wetland
- Forest
- Meadow
- Geologic Features
- Water Quality Pond/Wetland
- Stream Channel (approximate location)
- Urban Growth Boundary
- Culvert
- Spring
- Sample plots



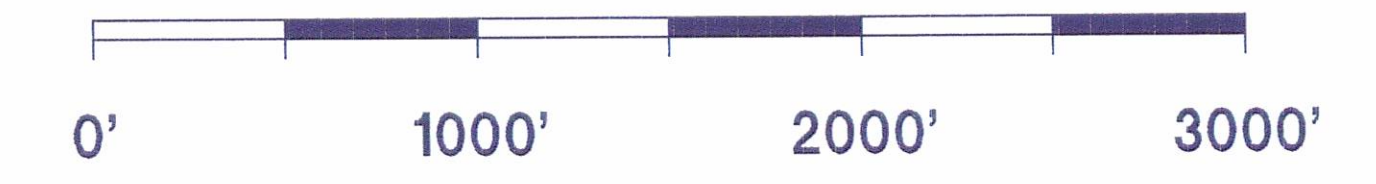
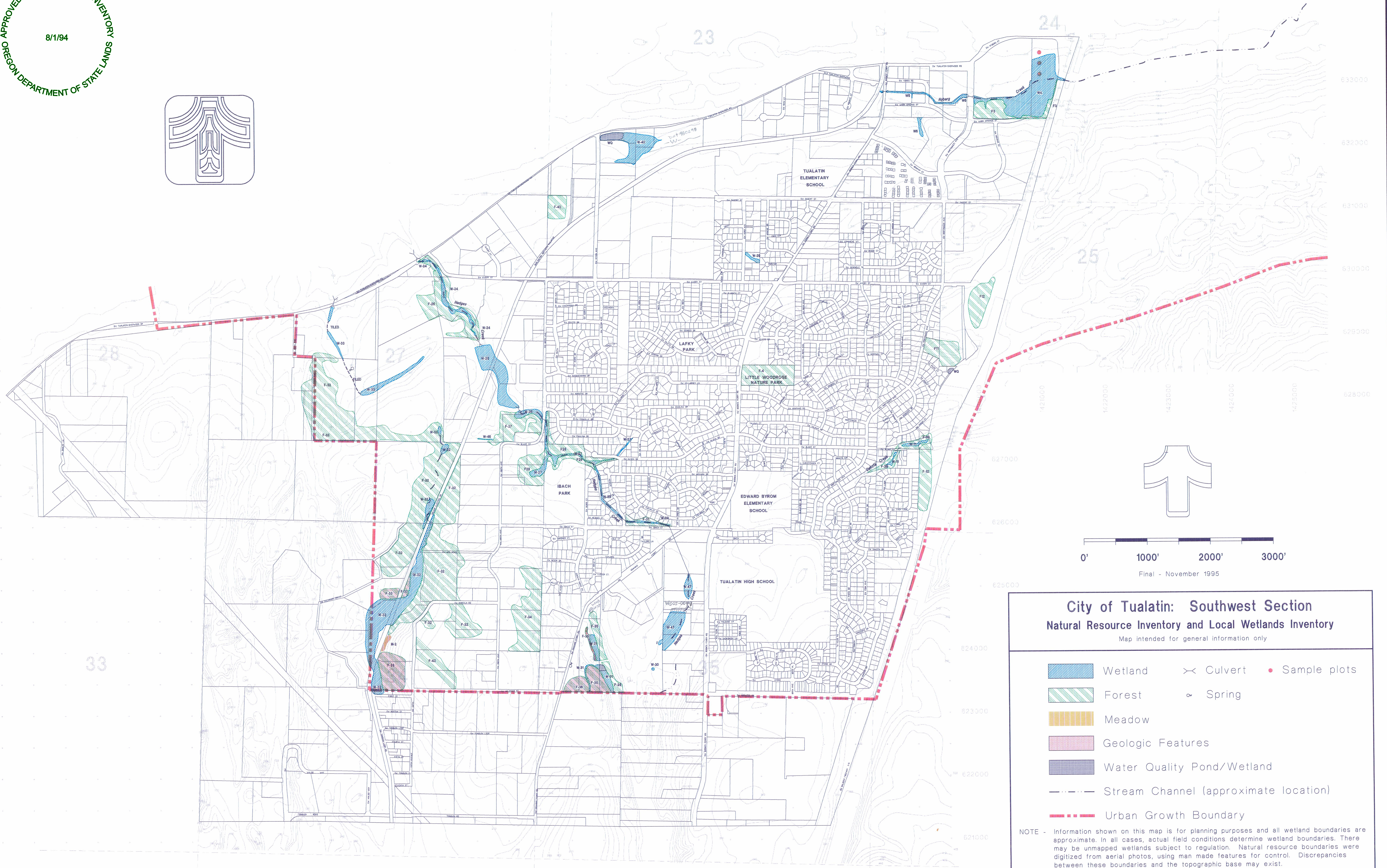
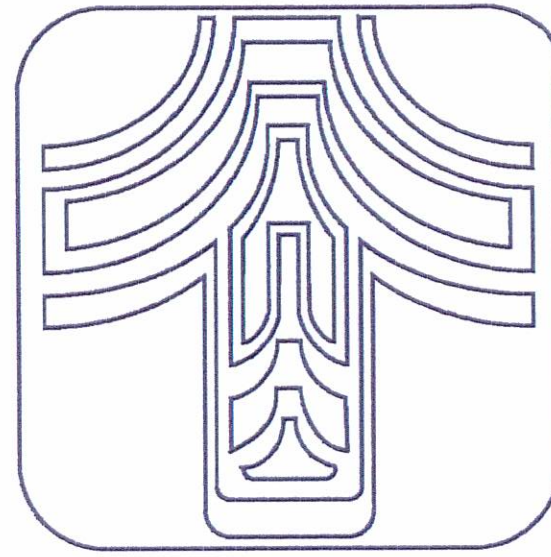
Final - November 1995



NOTE - Information shown on this map is for planning purposes and all wetland boundaries are approximate. In all cases, actual field conditions determine wetland boundaries. There may be unmapped wetlands subject to regulation. Natural resource boundaries were digitized from aerial photos, using man made features for control. Discrepancies between these boundaries and the topographic base may exist.

Sources - 1995 Field Data by Fishman Environmental Services; Mapping by Geo Graphic Image, City of Tualatin; Wetland resource files & delineated wetland coverage (1972 - 1994) WAC black and white aerial photo (March, 1994 - scale 1" = 400')
 USGS Topographic Coverage (1988), and METRO Parcel Base (October, 1994)

Funding for the Wetlands and Natural Areas Inventory was made available by the Oregon Department of Land Conservation and Development



Final - November 1995

City of Tualatin: Southwest Section
Natural Resource Inventory and Local Wetlands Inventory
Map intended for general information only

- Wetland
- Forest
- Meadow
- Geologic Features
- Water Quality Pond/Wetland
- Stream Channel (approximate location)
- Urban Growth Boundary
- Culvert
- Spring
- Sample plots

NOTE - Information shown on this map is for planning purposes and all wetland boundaries are approximate. In all cases, actual field conditions determine wetland boundaries. There may be unmapped wetlands subject to regulation. Natural resource boundaries were digitized from aerial photos, using man made features for control. Discrepancies between these boundaries and the topographic base may exist.

Sources - 1995 Field Data by Fishman Environmental Services. Mapping by Geo Graphic Image. City of Tualatin: Wetland resource files & delineated wetland coverage (1972 - 1994) WAC black and white aerial photo (March, 1994 - scale 1" = 400') USGS Topographic Coverage (1988), and METRO Parcel Base (October, 1994)