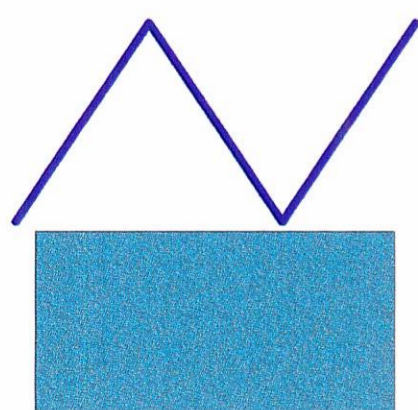
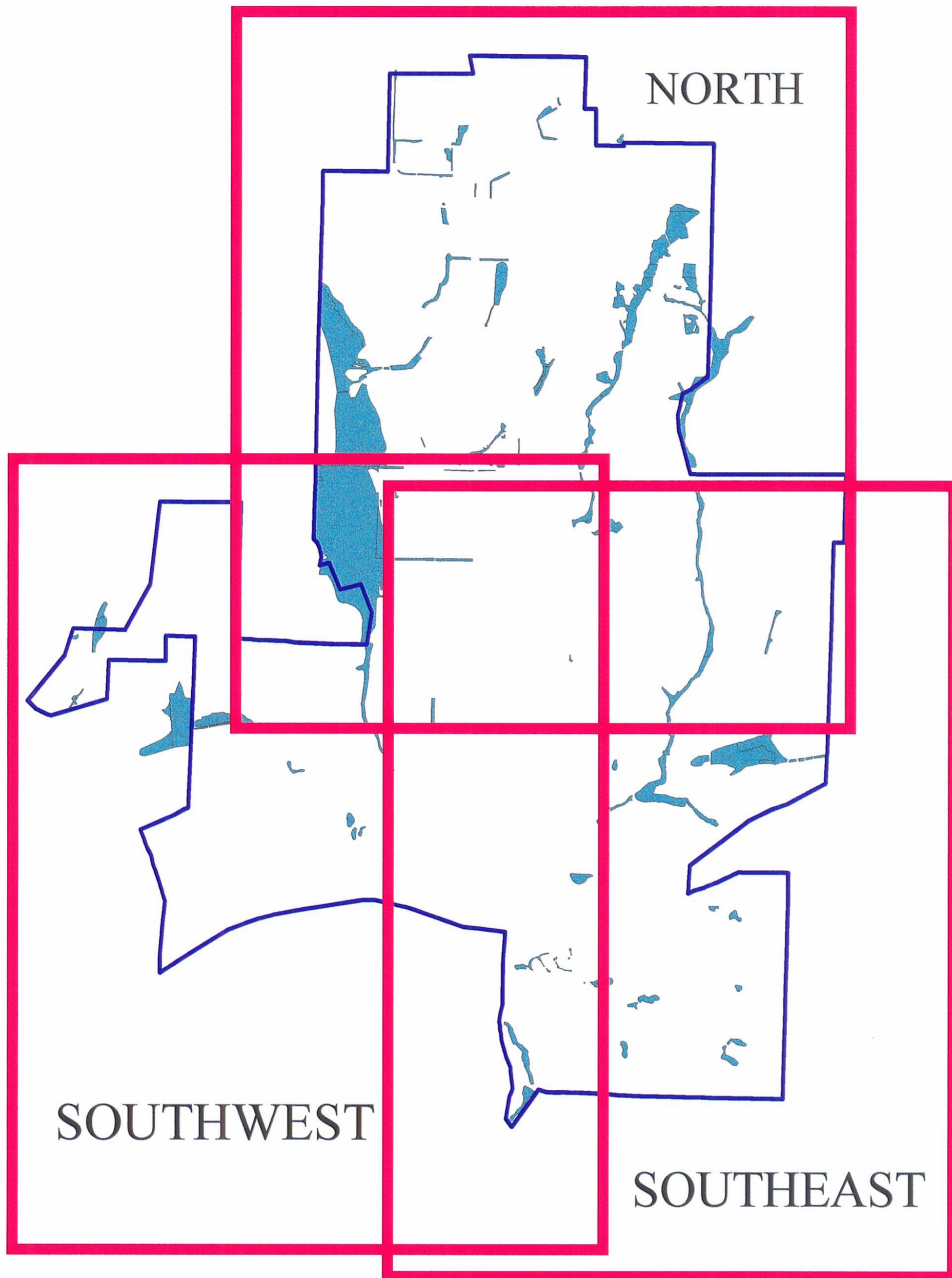
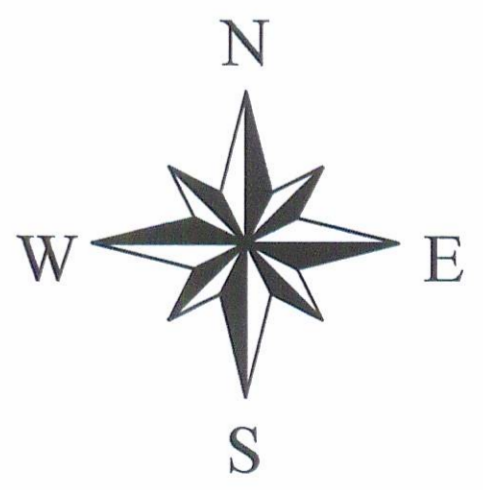


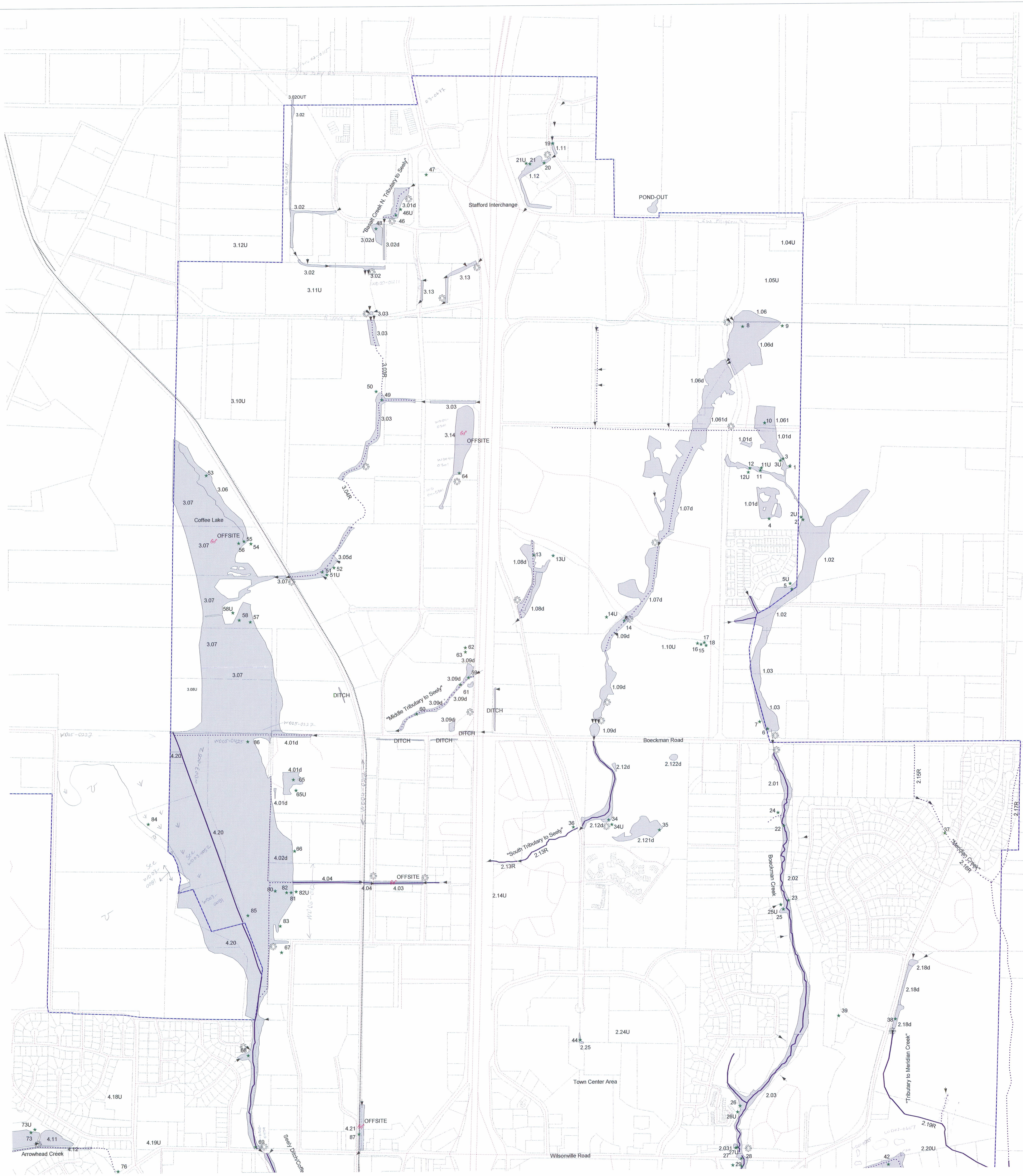
# City of Wilsonville Local Wetlands and Riparian Corridor Inventory Index



**City Limits**  
**Wetland Boundaries**



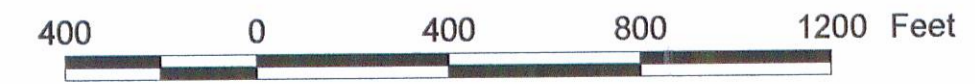
Map prepared by the City of Wilsonville  
Planning Division - February 4, 1999  
Scale 1"= 2000'



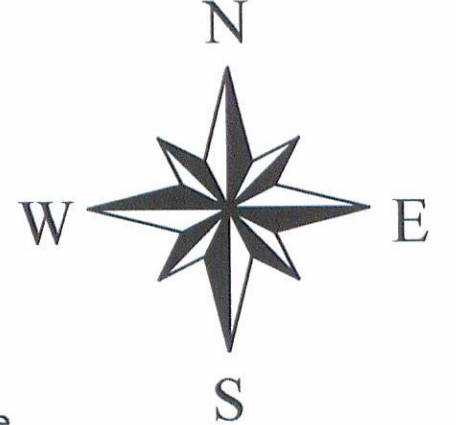
**LEGEND**

- WETLANDS
- TAX LOTS
- STREAMS
- INTERMITTENT
- PERENNIAL
- UGB
- CULVERT LOCATIONS
- RAILROAD
- STREETS
- CLACKAMAS/WASHINGTON COUNTY LINE
- VIEWPOINTS
- WETLANDS MAPPED OFF-SITE
- SAMPLE PLOT LOCATIONS


- 1.01 - WETLAND SITE ID
- 6.03d - DELINEATED WETLAND SITE ID
- 4.15R - RIPARIAN SITE ID
- 1.04U - UPLAND SITE ID
- \* 95 - SAMPLE PLOT ID



**Map Scale: 1 inch = 400 feet**



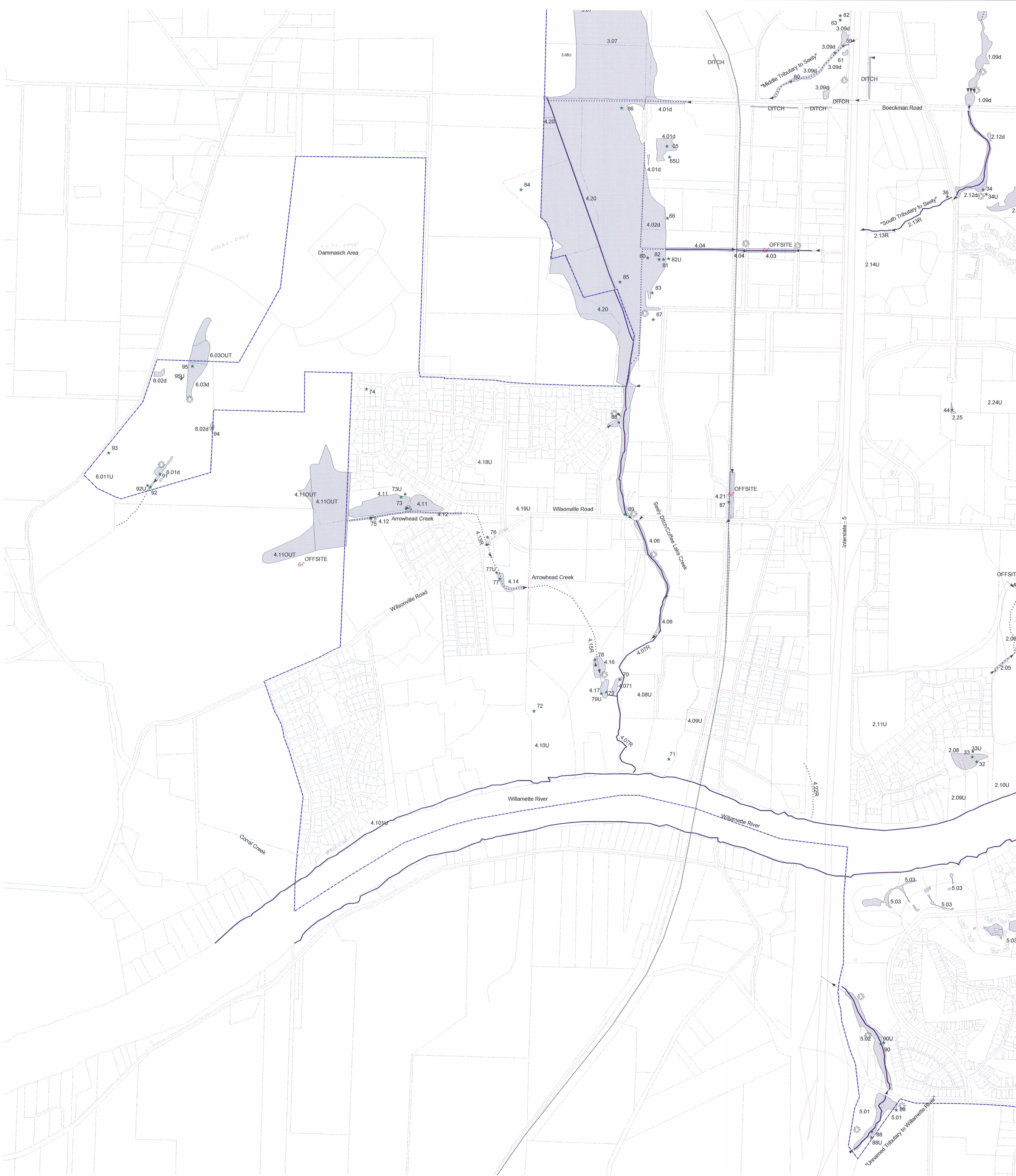
Information shown on this map is for planning purposes only and all wetland boundaries are approximate. In all cases, actual field conditions determine wetland boundaries. There may be unmapped wetlands subject to regulation within the study area.

Fishman Environmental Services  
*Consultants in ecology and natural resource management*  
  
 434 NW Sixth Avenue, Suite 304  
 Portland, OR 97209  
 (503)224-0333

City of WILSONVILLE  
 in OREGON  
 30000 SW Town Center Loop E  
 Wilsonville, OR 97070  
 (503) 682-4960

**CITY OF WILSONVILLE  
 LOCAL WETLANDS  
 AND  
 RIPARIAN CORRIDOR INVENTORY  
 NORTH**

Draft Map prepared 4/93; revised 12/97  
 Aerial Photography, July 9, 1996  
 Data Sources: Digital Orthophotography-  
 Spencer B. Gross; Roads, Taxlots, Rail, Streets,  
 UGB - Metro RLIS Database.  
 Map Projection Oregon State Plane North Zone  
 Datum: NAD 83. Units = International Feet

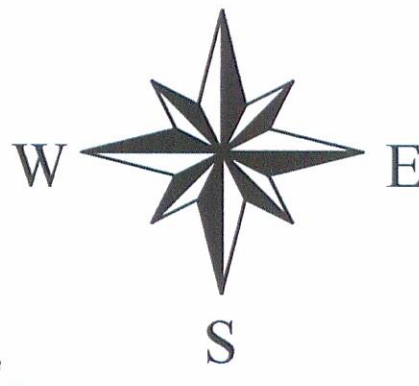
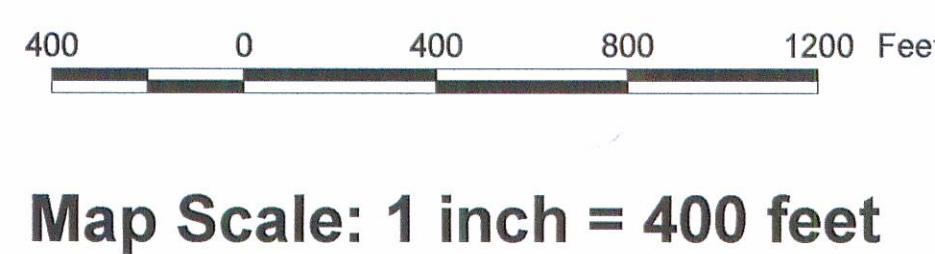


**LEGEND**

- WETLANDS
- TAX LOTS
- UGB
- STREAMS
- INTERMITTENT
- PERENNIAL
- RAILROAD
- CULVERT LOCATIONS
- STREETS
- CLACKAMAS/WASHINGTON COUNTY LINE
- VIEWPOINTS
- WETLANDS MAPPED OFF-SITE
- \* SAMPLE PLOT LOCATIONS

1.01 - WETLAND SITE ID  
 6.03d - DELINEATED WETLAND SITE ID  
 4.15R - RIPARIAN SITE ID  
 1.04U - UPLAND SITE ID  
 \*95 - SAMPLE PLOT ID

APPROVED WETLANDS INVENTORY  
 Oregon Department of Land Conservation & Development  
 Date: 2/26/10 Approved by: Dan Field



Information shown on this map is for planning purposes only and all wetland boundaries are approximate. In all cases, actual field conditions determine wetland boundaries. There may be unmapped wetlands subject to regulation within the study area.

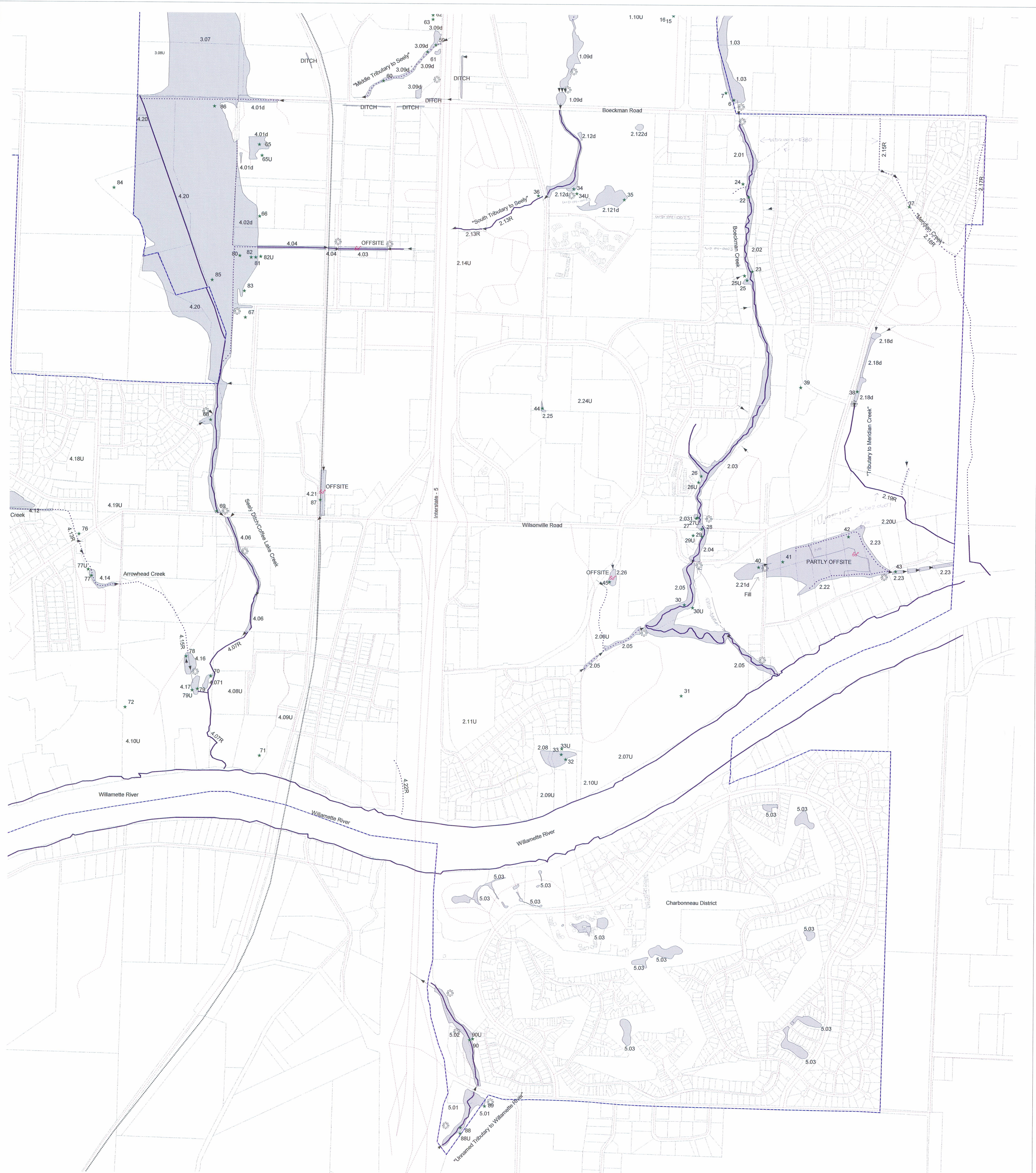
Fishman Environmental Services  
*Consultants in ecology and natural resource management*  
 434 NW Sixth Avenue, Suite 304  
 Portland, OR 97209  
 (503)224-0333

City of WILSONVILLE in OREGON  
 30000 SW Town Center Loop E  
 Wilsonville, OR 97070  
 (503) 682-4960

**CITY OF WILSONVILLE  
 LOCAL WETLANDS  
 AND  
 RIPARIAN CORRIDOR INVENTORY  
 SOUTHWEST**

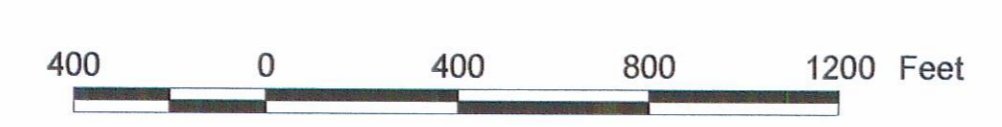
Draft Map prepared 4/93; revised 12/97  
 Aerial Photography, July 9, 1996  
 Data Sources: Digital Orthophotography,  
 Spencer B. Gross, Roads, Taxlots, Rail, Streets,  
 UGB - Metro RLIS Database.

Map Projection Oregon State Plane North Zone  
 Datum: NAD 83. Units = International Feet

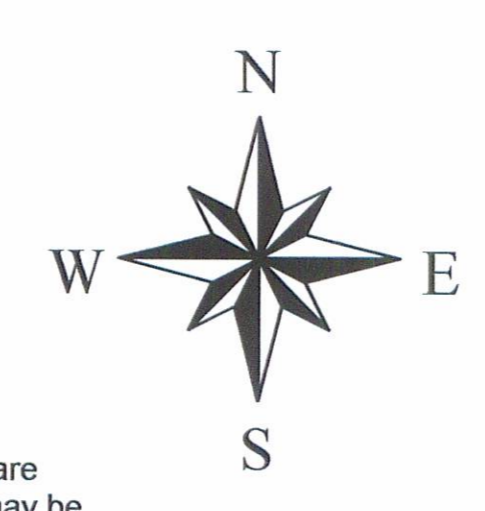


**LEGEND**

- WETLANDS
  - TAX LOTS
  - UGB
  - STREAMS
  - INTERMITTENT
  - PERENNIAL
  - RAILROAD
  - CULVERT LOCATIONS
  - STREETS
  - CLACKAMAS/WASHINGTON COUNTY LINE
  - WETLANDS MAPPED OFF-SITE
  - SAMPLE PLOT LOCATIONS
  - VIEWPOINTS
- 1.01 - WETLAND SITE ID  
 6.03d - DELINEATED WETLAND SITE ID  
 4.15R - RIPARIAN SITE ID  
 1.04U - UPLAND SITE ID  
 \* 95 - SAMPLE PLOT ID
- APPROVED WETLANDS INVENTORY  
 Oregon Division of State Lands  
 Meets LULU Standards  
 Date 7/24/14 Approved by [Signature]



**Map Scale: 1 inch = 400 feet**



Information shown on this map is for planning purposes only and all wetland boundaries are approximate. In all cases, actual field conditions determine wetland boundaries. There may be unmapped wetlands subject to regulation within the study area.

Fishman Environmental Services  
*Consultants in ecology and natural resource management*  
  
 434 NW Sixth Avenue, Suite 304  
 Portland, OR 97209  
 (503)224-0333

City of  
**WILSONVILLE**  
 in OREGON

**30000 SW Town Center Loop E**  
**Wilsonville, OR 97070**  
**(503) 682-4960**

**CITY OF WILSONVILLE  
 LOCAL WETLANDS  
 AND  
 RIPARIAN CORRIDOR INVENTORY  
 SOUTHEAST**

Draft Map prepared 4/93; revised 12/97  
 Aerial Photography, July 9, 1996  
 Data Sources: Digital Orthophotography,  
 Spencer B. Gross; Roads, Taxlots, Rail, Streets,  
 UGB - Metro RLIS Database.

Map Projection Oregon State Plane North Zone  
 Datum: NAD 83. Units = International Feet