

# Waiting for Final Approval

## City of Banks LOCAL WETLANDS INVENTORY

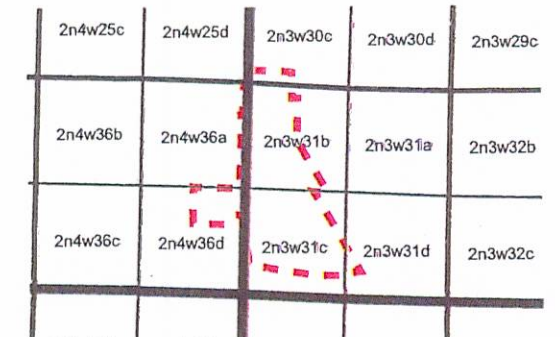
November 2002

### Legend

- Section Lines
- City Limits and Urban Growth Boundary Line
- Intermittent Tributary to West Fork Dairy Creek
- POTB Railroad
- P&W Railroad
- Taxlots
- Wetlands
- Significant Wetlands
- Water Quality / Detention Facility
- 100-Year Floodplain
- SP = Sample Plot
- DC-2A Wetland Code
- DSL 01-0612 Division of State Lands File Number

### Disclaimer:

Information shown on this map is for planning purposes only and wetland information is subject to change. There may be unmapped wetlands subject to regulation and all wetland boundary mapping is approximate. In all cases, actual field conditions determine wetland boundaries. You are advised to contact the Oregon Division of State Lands and the U.S. Army Corps of Engineers with any regulatory questions.



Scale 1" = 500'

400      0      400      800 Feet

